

# TERMINATIONS

2.9mm, DC - 40 GHz, 1 Watt

## SPECIFICATIONS:

Models: TS400M, TS400F, TS400HM, TS400HF

**RoHS**  
Compliant

**AEROFLEX**  
A passion for performance.

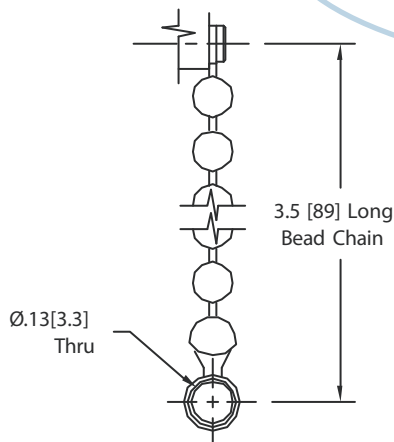
### Electrical:

Frequency Range \_\_\_\_\_ DC - 40 GHz  
VSWR \_\_\_\_\_ 1.20:1 Max.  
Input Power \_\_\_\_\_ 1 Watt Avg. @ 25°C  
Derated Linearly to 0 Watts @ +125°C  
Impedance \_\_\_\_\_ 50 Ohms  
Operating Temp Range \_\_\_\_\_ -55°C to +125°C  
RF Leakage \_\_\_\_\_ 90 dB Min.

### Mechanical:

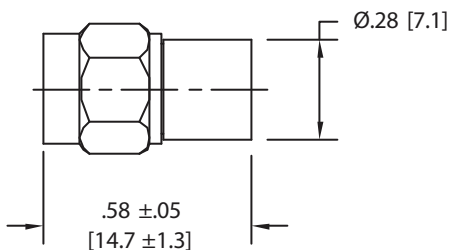
2.9mm Connectors \_\_\_\_\_ Passivated Stainless Steel  
Mates both Mechanically and Electrically with  
SMA, K\* and 3.5mm Series Connectors  
Conductors \_\_\_\_\_ Gold Plated Beryllium Copper  
Bead Chain \_\_\_\_\_ Passivated Stainless Steel

\* K is a Trademark of Anritsu Corp.

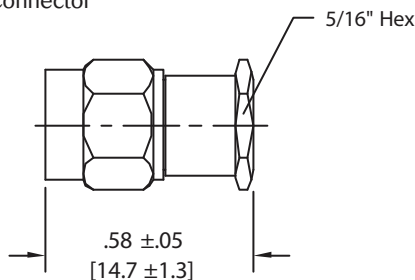


CHAIN DETAIL

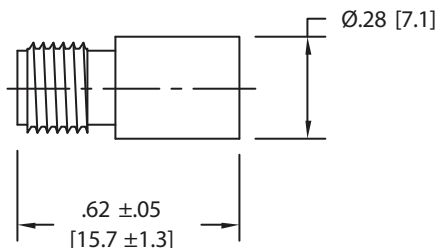
Model Number: **TS400M**  
2.9mm Male Connector



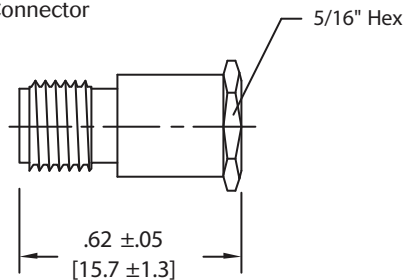
Model Number: **TS400HM**  
2.9mm Male Connector



Model Number: **TS400F**  
2.9mm Female Connector



Model Number: **TS400HF**  
2.9mm Female Connector



## HOW TO ORDER:

Model Number: **TS400XYZ**

Body Style  
= No Hex  
H = Hex

Style  
= No Chain  
C = Chain Included  
Connector Configuration  
M = Male  
F = Female

### Ordering Examples:

Model Number: **TS400MC**  
2.9mm Male; DC - 40 GHz; Chain Included

Model Number: **TS400HF**  
2.9mm Female; DC - 40 GHz; Hex Style; No Chain

TS400: REV H

**AEROFLEX**  
INMET

Aeroflex / Inmet, Inc. • 300 Dino Drive, Ann Arbor, MI 48103 • U.S.A.  
888-244-6638 or 734-426-5553 • FAX: 734-426-5557  
www.aeroflex.com/inmet • inmet-sales@eroflex.com