

## TH-75 Channeled Concealed Hinge



### Characteristic

The shaft can be removed.  
Easy installation.

### Application

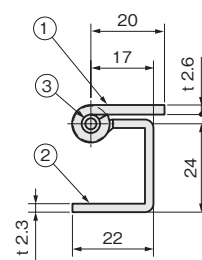
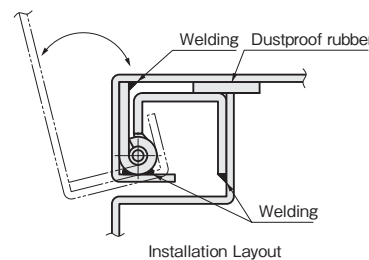
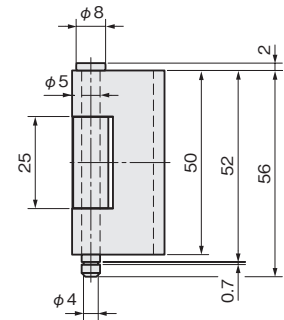
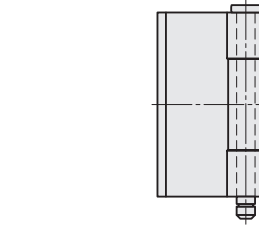
Distribution boards / Distribution panels /  
Control boards / Telecommunication devices

### Specification

Model No.	Door Weight(kg)	Net Weight(g)	Code No.
TH-75	16	91.5	2438

### Parts List

No.	Part Name	Material	Finish	Quantity
1	Hinge Piece (A)	SPCC	Zn	1
2	Hinge Piece (B)			1
3	Shaft	SWCH		1



※The shaft can be removed.

## TH-52 Angled-Concealed Hinge

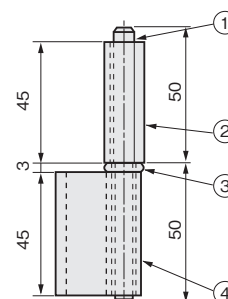
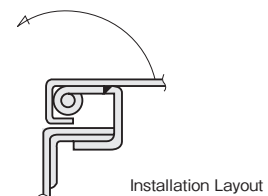
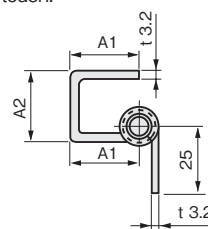


### Characteristic

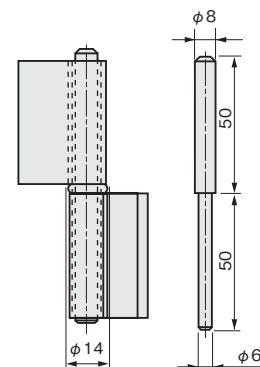
A dowel pin is not needed to hold the hinge pieces in place.  
The pin is made with two diameters. The lower portion is smaller while the plate thickness of the hinge pieces is the same.  
Either side of the door can be used.  
The flat washer enables the door to rotate with a light touch.

### Application

Distribution boards / Distribution panels /  
Telecommunication devices



The shaft can be removed



### Specification

Model No.	A1	A2	Door Weight(kg)	Net Weight(g)	Code No.
TH-52-1	45	33	7	252	2336
TH-52-2	35	28	11	225	2337
TH-52-3	25	23	18	195	2338

### Parts List

No.	Part Name	Material	Finish	Quantity
1	Shaft	SUS430	—	1
2	Hinge Piece (A)	SPCC	Zn	1
3	Flat Washer	SS400		1
4	Hinge Piece (B)	SPCC		1