

# Ceramic Monoblock Bandpass Filter



# Model CER0039A Technical Data

## Features:

- High Performance
- Rugged Bracket Mounting

## Description and Applications:

This 7 pole monoblock filter is primarily designed for Land Mobile applications at 455 MHz.



## Electrical Specifications

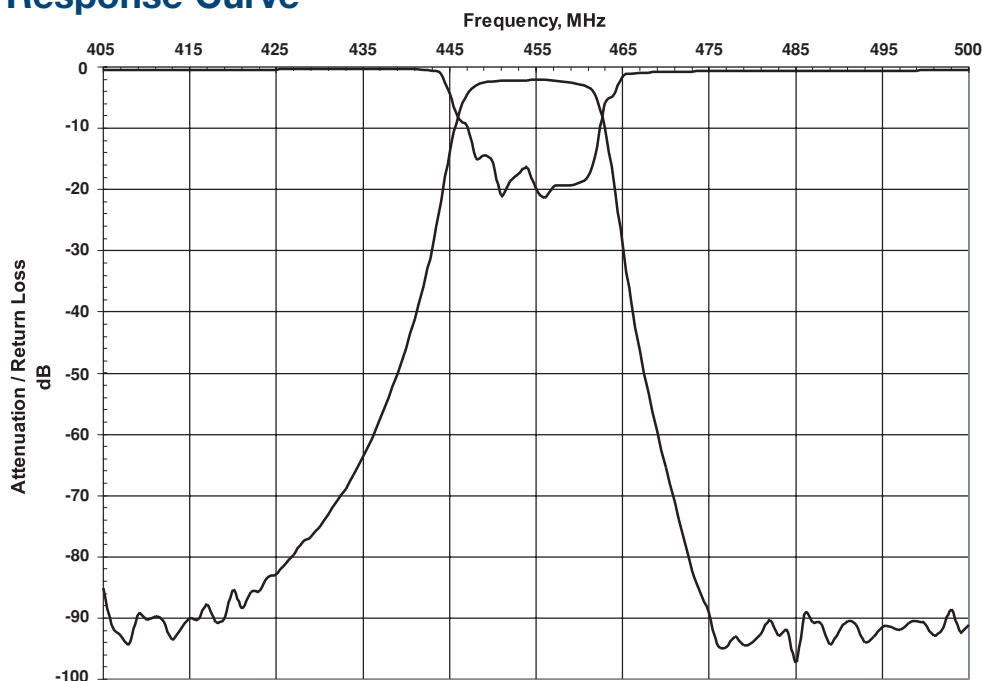
Parameters	Frequency	Specifications @ 25° C
Insertion Loss	450 MHz to 460 MHz	3.4 dB max.
Forward Return Loss		10.0 dB min.
Attenuation	471 MHz	50.0 dB min.
Attenuation	493 MHz	50.0 dB min.
Impedance		50Ω

NOTE: Supplier shall test each filter to the critical electrical specifications listed above or better. Any subsequent audits may deviate due to measurement repeatability among different test systems. Such deviations shall not exceed the following limits:

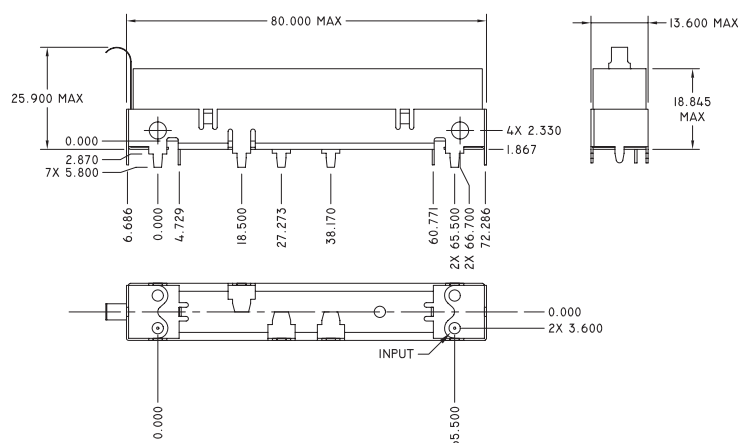
Specification	Typical Allowance
Insertion Loss	0.1dB
Return Loss	1.0dB
Stopbands	1.0dB

Rev. 2

### Typical Response Curve



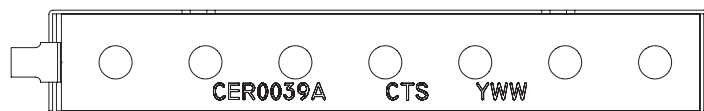
### Mechanical Dimensions



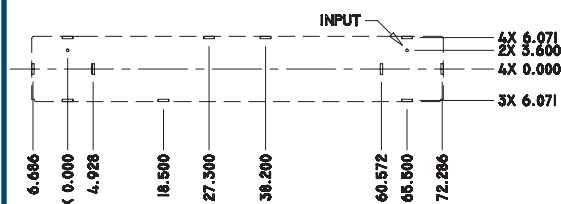
ALL DIMENSIONS IN MM.

### Part Marking

Y = LAST DIGIT OF YEAR  
WW = SEQUENTIAL WEEK NUMBER

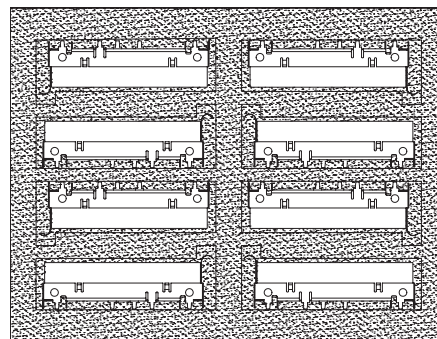


### PC Board Layout



VIEW LOOKING DOWN ON FILTER TO PC BOARD.

### Packaging



This product is shipped in pre-formed foam trays.

### Contact Information:

CTS WIRELESS COMPONENTS, INC. / 171 Covington Drive / Bloomingdale, IL 60108  
PHONE: (800) 757-6686 / [www.ctscorp.com](http://www.ctscorp.com)

Document Control #6287094Y01 Rev. 2

Date of Origin 03/20/02

Date of Revision 03/20/02

THIS DATA SHEET IS NOT AN OFFER FOR SALE AND SHALL NOT OBLIGATE CTS TO SELL THE PRODUCTS DESCRIBED HEREIN OR ANY OTHER PRODUCTS. CTS MAY, IN ITS SOLE DISCRETION, MODIFY OR DISCONTINUE THE SALE OF ITS PRODUCTS AT ANY TIME WITHOUT NOTICE. CTS MAKES NO WARRANTY, INCLUDING WARRANTIES OF MERCHANTABILITY OR FITNESS FOR A PARTICULAR PURPOSE, WITH RESPECT TO THE PRODUCTS REFERENCED OR INFORMATION PROVIDED HEREIN.

CTS® is a registered trademark of CTS Corporation.