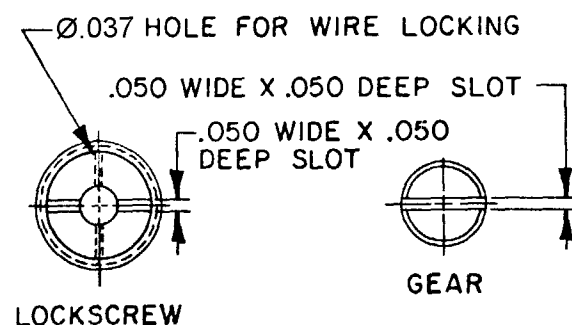
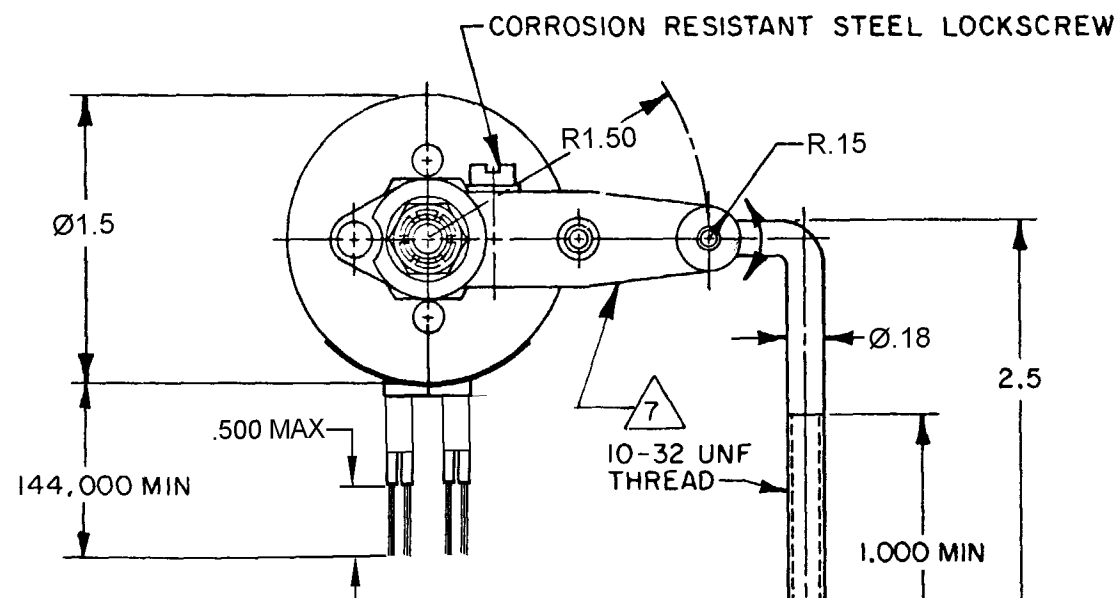


MICRO SWITCH
FREEPORT ILLINOIS U.S.A.
A DIVISION OF HONEYWELL
FED. MFG. CODE 91929

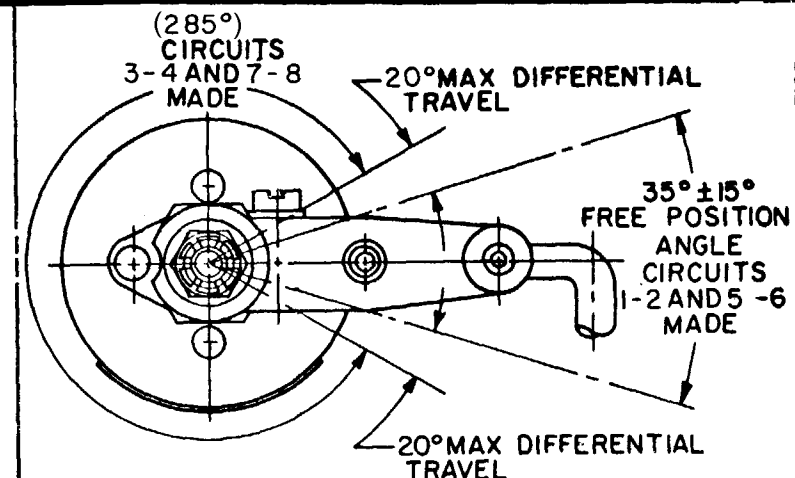
SWITCH - ENCLOSED

CATALOG LISTING
44EN27-12

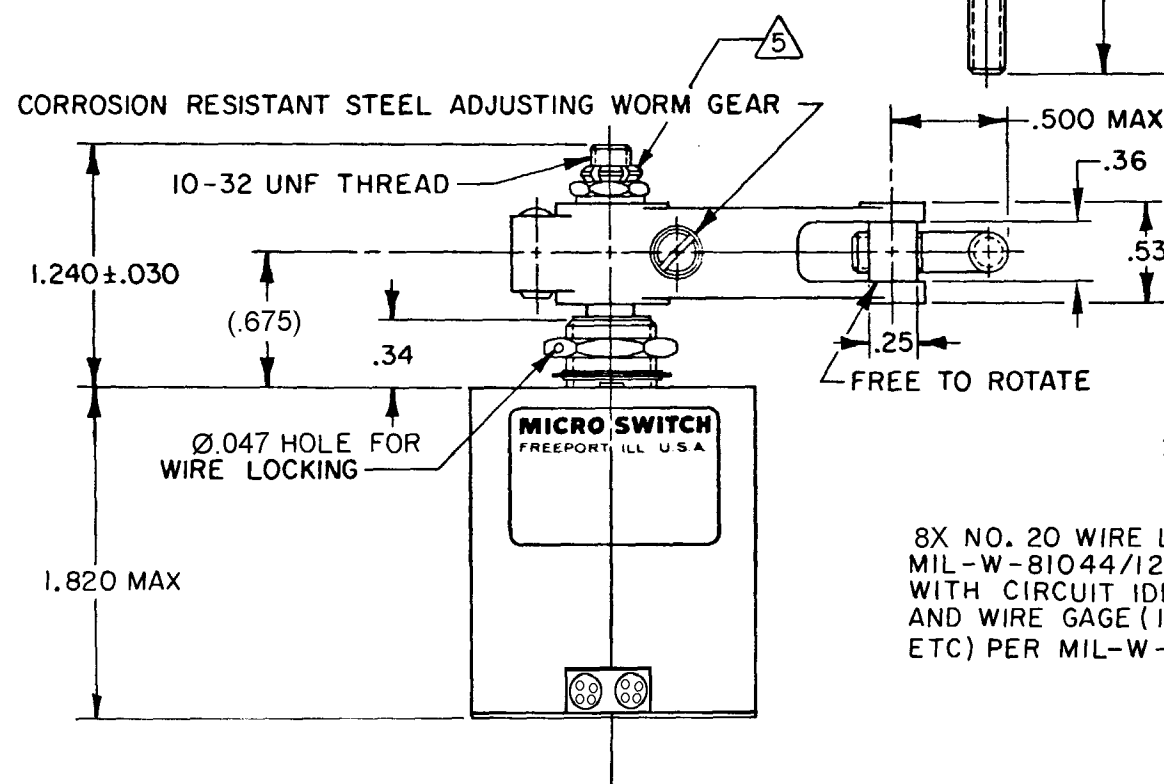
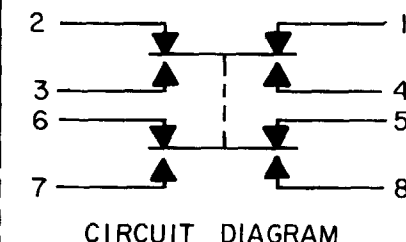


LEVER MAY BE ADJUSTED FOR AN INFINITE NUMBER OF POSITIONS THRU 360° ADJUSTMENT IS MADE BY LOOSENING THE LOCK NUT AND THEN THE LOCKSCREW AND TURNING GEAR UNTIL LEVER IS IN DESIRED POSITION. LOCKSCREW AND LOCK NUT ON SHAFT IS THEN TIGHTENED TO POSITIVELY LOCK LEVER IN POSITION.

LEVER ADJUSTMENT DETAIL



CHARACTERISTICS



CORROSION RESISTANT STEEL LOCKING NUT, .37 ACROSS FLATS (MS 21083-N3)

CORROSION RESISTANT STEEL SHAFT, BUSHING AND PINS

CORROSION RESISTANT STEEL WASHER, Ø.438 X .032 THICK (AN 960-C10L)

15/32-32 UNS THREAD TO WITHIN .062 OF SHOULDER

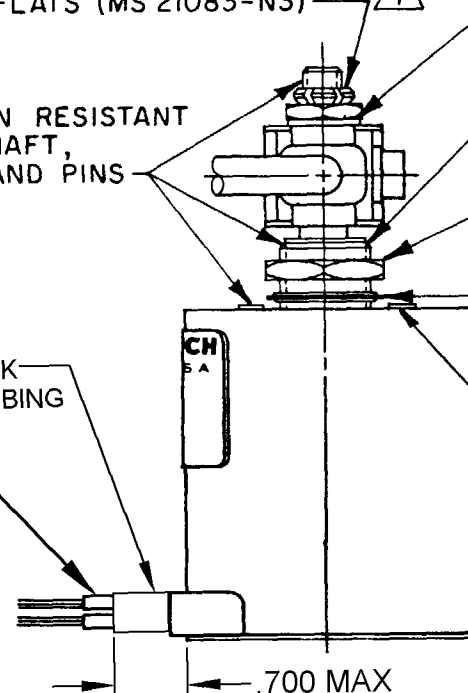
CORROSION RESISTANT STEEL HEX NUT, .62 ACROSS FLATS X .125 THICK

CORROSION RESISTANT STEEL INTERNAL TOOTH LOCKWASHER, Ø.60 X (.018) THICK (MS 35333-136)

2X Ø.140 X .062 HIGH PINS LOCATED ON Ø.765 CENTERS

2X HEAT SHRINK POLYOLEFIN TUBING

8X NO. 20 WIRE LEAD PER MIL-W-81044/12 MARKED WITH CIRCUIT IDENTIFICATION AND WIRE GAGE (1-20, 2-20, ETC) PER MIL-W-5088



RASTER

THIS DRAWING COVERS A PROPRIETARY ITEM AND IS THE PROPERTY OF MICRO SWITCH, A DIVISION OF HONEYWELL. THIS DRAWING IS NOT TO BE COPIED OR USED WITHOUT THE APPROVAL OF MICRO SWITCH.

THIRD ANGLE PROJECTION

SCALE NONE

DO NOT SCALE PRINT

TOLERANCES
APPLY TO DESIGN UNITS. CONVERSIONS ARE ONLY FOR REFERENCE. UNLESS NOTED, TOLERANCES ARE:

DIM.	TOL.	DIM.	TOL.
NO PLACES	X	1/04	
ONE PLACE	X,X	0.4/016	X,X
TWO PLACES	X,XX	0.15/006	X,XX
THREE PLACES	X,XXX	0.38/015	X,XXX
ANGLES		0.13/005	

DESIGN UNITS: SI METRIC ☐ US CUSTOMARY ☒

RAW MATERIAL - COMMERCIAL STANDARD

MICRO SWITCH STANDARDS APPLY

DIMENSIONS ARE TO BE MET BEFORE PROTECTIVE COATINGS ARE APPLIED

WEIGHT 19.25 OZ MAX

CHARACTERISTICS

OPERATING TORQUE --- 10 IN-LB MAX

ELECTRICAL DATA

CONTACT ARRANGEMENT
SEE CIRCUIT DIAGRAM

28 VDC

LOAD SEA LEVEL 50,000 FT.

RES 15 15

IND 10 10

MOTOR 5

LAMP 3 3

PRETRAVEL
DIFFERENTIAL TRAVEL
OVERTRAVEL
FREE POSITION
SEE DETAIL

NOTES:

- 1 - CORROSION RESISTANT STEEL ENCLOSURE
- 2 - SWITCH SEALED PER MIL-PRF-8805 SYMBOL 4
- 3 - UNIT PROVIDES NO SHAFT RESTORING TORQUE THE ACTUATING DEVICE MUST CONTROL MOVEMENT OF THE SHAFT
- 4 - CIRCUIT DIAGRAM AND CATALOG LISTING ARE SHOWN ON NAMEPLATE
- 5 - DO NOT APPLY MORE THAN 20-25 INCH-POUNDS OF TORQUE WHEN TIGHTENING LOCKING NUT
- 6 - LEADS PARALLEL WITH CENTERLINE OF MOUNTING PINS WITHIN 10°
- 7 - HARDWARE MAY BE PACKAGED UNASSEMBLED PER MIL-PRF-8805

44EN27-12

DRAWING NUMBER

ISSUE

REVISIONS

A	CO	44351	28 NOV 79
B	CO	47573	21 APR 80
C	CO	49806	28 SEPT 81
D	CO	65563	18 APR 89
E	CO	63671	21 APR 10

FO-5265 1-A

DRAWN

REPLACES

PR-1844

CHECK

CHECK

CHECK

CHECK

CHECK

CHECK

CHECK

CHECK

CHECK

Mouser Electronics

Authorized Distributor

Click to View Pricing, Inventory, Delivery & Lifecycle Information:

[Honeywell:](#)

[44EN27-12](#)