

THIS DRAWING IS UNPUBLISHED.

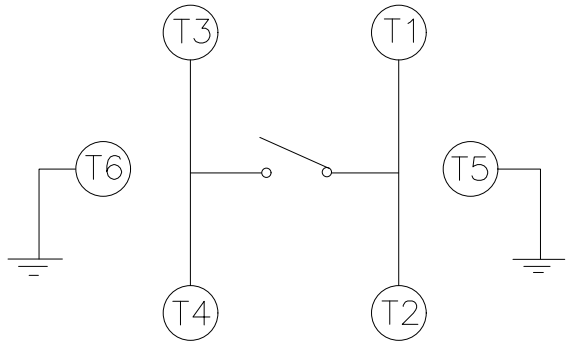
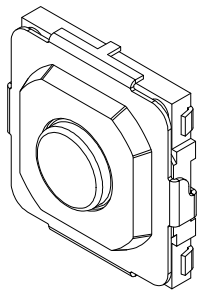
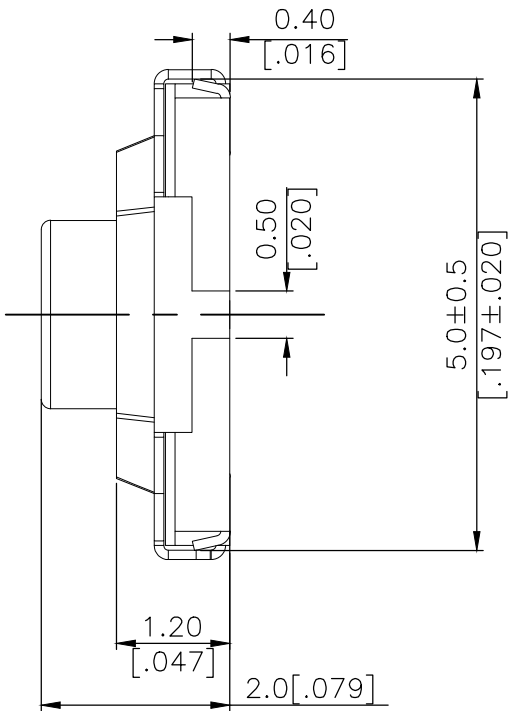
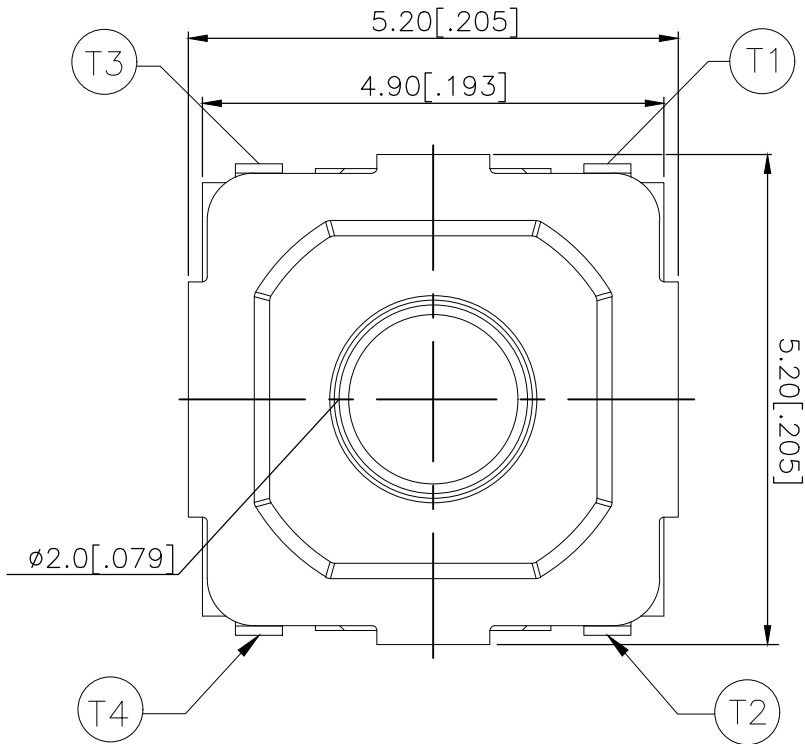
RELEASED FOR PUBLICATION

© COPYRIGHT — TE Connectivity Ltd.

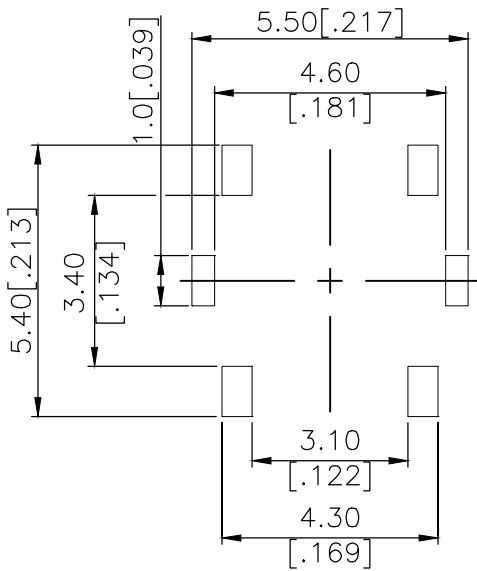
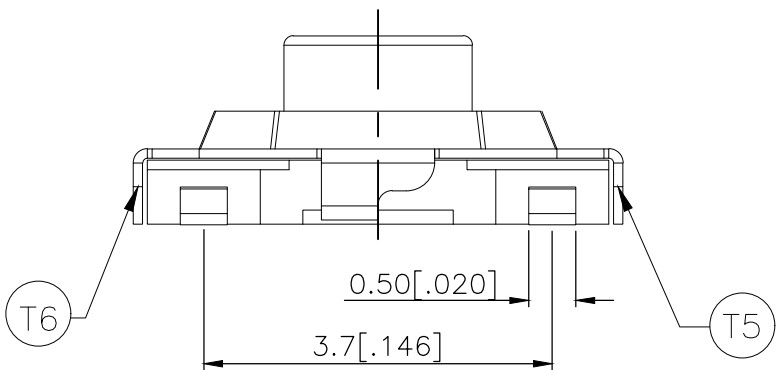
ALL RIGHTS RESERVED.

REVISIONS

P	LTR	DESCRIPTION	DATE	DWN	APVD
	1	NEW DRAWING	04JUL2018	GCM	AS



CIRCUIT DIAGRAM



P.C.B. LAYOUT

WHITE	260±50	MSLPT5252CL4WTR	2337245-4
BLACK	160±50	MSLPT5252CL3BTR	2337245-3
WHITE	100±50	MSLPT5252CL2WTR	2337245-2
BLACK	70±50	MSLPT5252CL1BTR	2337245-1
ACTUATOR COLOR	ACTUATION FORCE (gf)	SMART PART NUMBER	PART NUMBER

THIS DRAWING IS A CONTROLLED DOCUMENT.

DIMENSIONS: mm [INCHES]	TOLERANCES UNLESS OTHERWISE SPECIFIED:
	0 PLC ± - 1 PLC ± - 2 PLC ± 0.2 [.008] 3 PLC ± - 4 PLC ± - ANGLES ± -
MATERIAL	FINISH
-	-

DWN	04JUL2018
CHK	04JUL2018
APVD	04JUL2018
PRODUCT SPEC	—
APPLICATION SPEC	—
WEIGHT	—
CUSTOMER DRAWING	—

TE Connectivity Ltd.			
NAME			
SWITCH, TACTILE, LOW-PROFILE, MINI, 5.2 x 5.2 x 2.0, J BEND			
SIZE	CAGE CODE	DRAWING NO	RESTRICTED TO
A3	00779	C-2337245	—
SCALE		SHEET	REV
NTS		1 of 3	1

PRELIMINARY

THIS DRAWING IS UNPUBLISHED.	RELEASED FOR PUBLICATION
© COPYRIGHT - TE Connectivity Ltd.	ALL RIGHTS RESERVED.

REVISIONS					
P	LTR	DESCRIPTION	DATE	DWN	APVD
	-	SEE SHEET 1	-	-	-

NOTES:

1. MATERIALS:

TERMINAL: COPPER ALLOY, SILVER OVER NICKEL FINISH
BASE: THERMOPLASTIC, BLACK
ACTUATOR: THERMOPLASTIC, SEE TABLE, SHEET 1 OF 3, FOR COLOR
TAPE: POLYTETRAFLUOROETHYLENE
CONTACT: STAINLESS STEEL, SILVER OVER NICKEL FINISH
COVER: NICKEL SILVER

2. COMPLIANCE:

ALL MATERIALS AND FINISHES SHALL COMPLY WITH EU
DIRECTIVE 2002/95/EC OF 27JAN2003(RoHS)

3. SPECIFICATIONS:

RATING: 50 mA, 12V DC
CONTACT RESISTANCE: 100mΩ MAXIMUM (INITIAL)
INSULATION RESISTANCE: 100MΩ MINIMUM (INITIAL)
DIELECTRIC STRENGTH: 250V AC, 1 MINUTE
OPERATING LIFE: 2337245-1 (70 gf) = 1,000,000 CYCLES WITH LOAD
2337245-2 (100 gf) = 1,000,000 CYCLES WITH LOAD
2337245-3 (160 gf) = 1,000,000 CYCLES WITH LOAD
2337245-4 (260 gf) = 200,000 CYCLES WITH LOAD

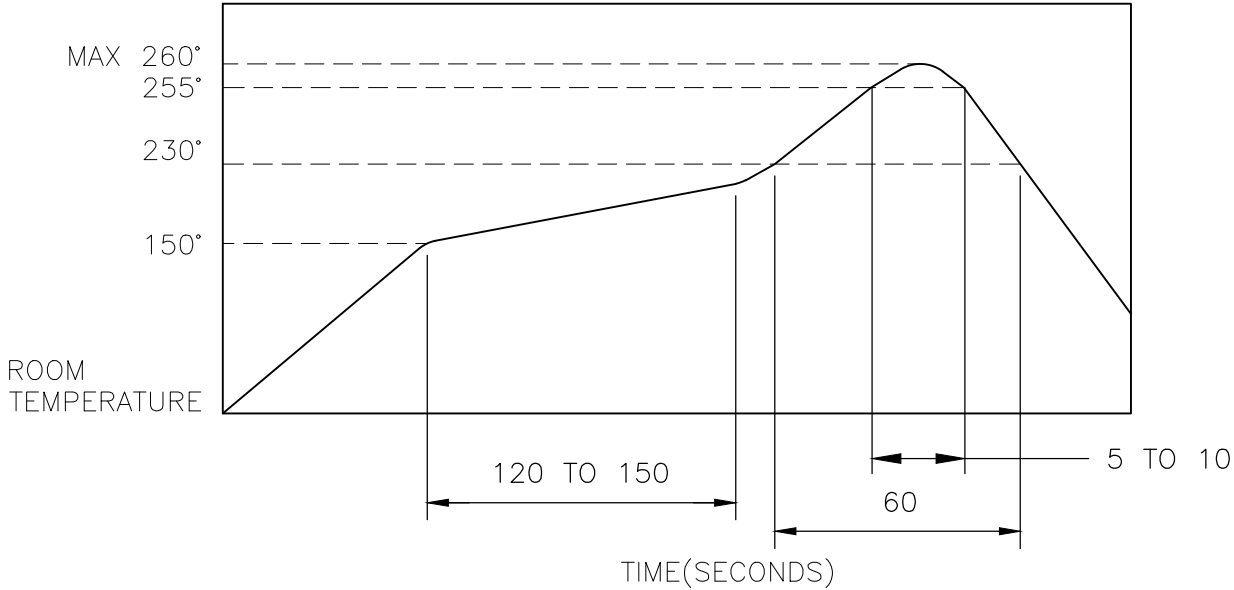
TRAVEL: 0.25^{+0.1}_{-0.2} [.010^{+0.004}_{-0.008}]

ACTUATION FORCE: 2337245-1 = 70±50gf
2337245-2 = 100±50gf
2337245-3 = 160±50gf
2337245-4 = 260±50gf

OPERATING TEMPERATURE: -25° TO 70°C
STORAGE TEMPERATURE: -30° TO 80°C

4. SOLDER CONDITIONS :

SMT:



THE CONDITON NOTED ABOVE IS THE TEMPERATURE OF THE COPPER FOIL ON THE SURFACE OF THE PCB. THERE ARE CASES WHERE THE TEMPERATURE OF THE BOARD GREATLY DIFFERS FROM THE SURFACE OF THE SWITCH. DO NOT ALLOW THE SURFACE TEMPERATURE OF THE SWITCH TO EXCEED 260°C.

MANUAL SOLDERING:

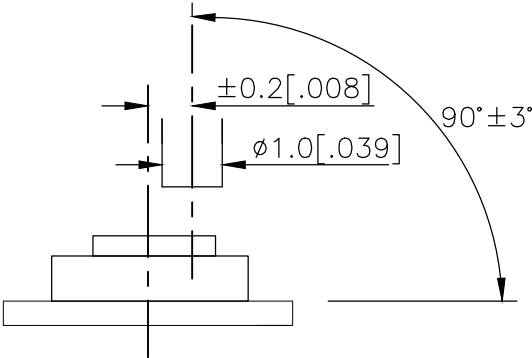
SOLDERING TEMPERATURE	350°C MAXIMUM
CONTINUOUS SOLDERING TIME	5 SECONDS MAXIMUM

HANDLING PRECAUTIONS:

1. CARE SHOULD BE EXERCISED SO THAT FLUX FROM THE TOP SURFACE OF THE PRINTED CIRCUIT BOARD DOES NOT ADHERE TO THE SWITCH.
2. DO NOT WASH THE SWITCH

5. OPERATING PRECAUTIONS:

1. DO NOT ACTUATE THE SWITCH WITH EXCESSIVE FORCE
2. DISCONTINUE FORCE AFTER THE SWITCH HAS BEEN ACTUATED SO AS TO AVOID DEFORMATION OF THE COMPONENTS OF THE SWITCH. DEFORMATION OF THE COMPONENTS MAY CAUSE THE SWITCH TO MALFUNCTION.
3. ALIGN THE PLUNGER WITH THE SWITCH TO INSURE PROPER OPERATION



6. STORAGE CONDITIONS:

AVOID THE FOLLOWING AS EXPOSURE MAY AFFECT THE PERFORMANCE AND/OR THE SOLDERABILITY OF THE SWITCH:

1. TEMPERATURE OF -10° TO 40°C AND 85% HUMIDITY
2. EXPOSURE TO CORROSIVE GAS
3. STORAGE OVER 6 MONTHS
4. EXPOSURE TO DIRECT SUNLIGHT

STORAGE CONDITIONS SHOULD PREVENT HEAVY IMPACT OR LOADING

AFTER OPENING THE PACKAGE, UNUSED SWITCHES MUST BE REPACKAGED IN A MOISTURE-PROOF AND AIRTIGHT ENVIRONMENT.

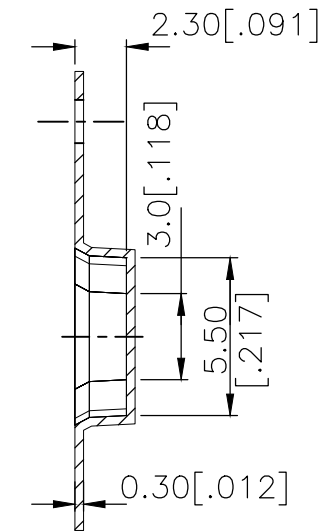
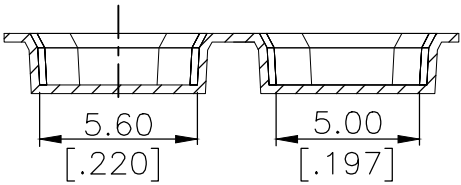
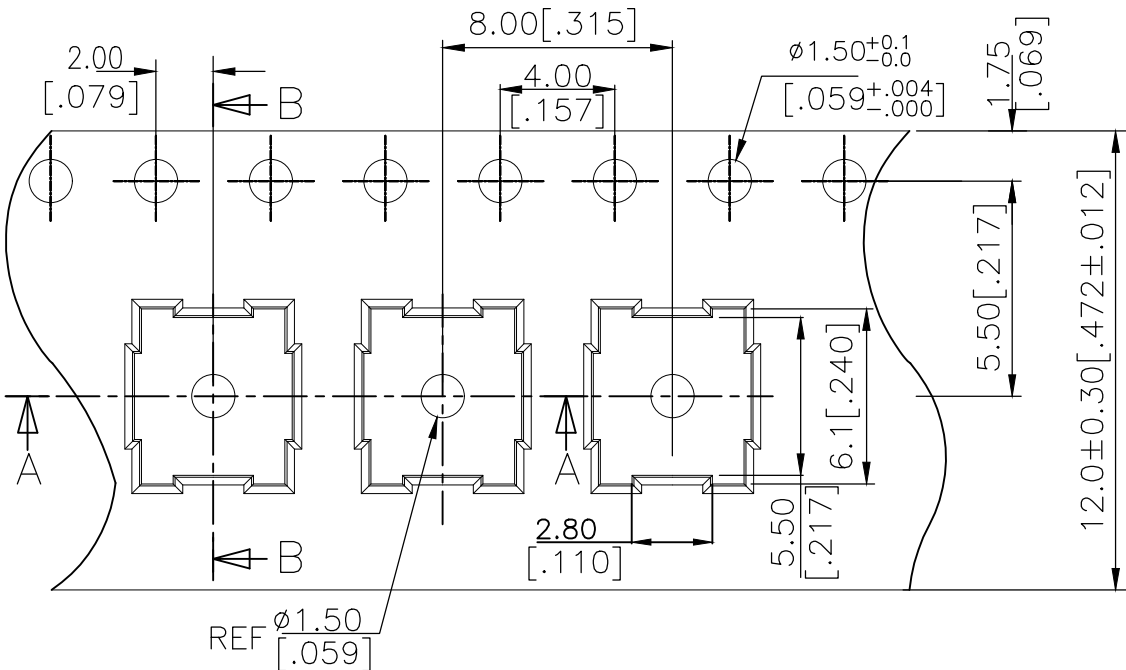
PRELIMINARY

THIS DRAWING IS A CONTROLLED DOCUMENT.		DWN GANESH C M 04JUL2018	TE Connectivity Ltd.		
		CHK ALEXANDER SHARPE 04JUL2018			
DIMENSIONS: mm [INCHES]	TOLERANCES UNLESS OTHERWISE SPECIFIED:	APVD ALEXANDER SHARPE 04JUL2018	NAME		
		PRODUCT SPEC	SWITCH, TACTILE, LOW-PROFILE, MINI, 5.2 x 5.2 x 2.0, J BEND		
	0 PLC ± - 1 PLC ± - 2 PLC ± 0.2 [.008] 3 PLC ± - 4 PLC ± - ANGLES ± -	APPLICATION SPEC	SIZE		
		FINISH	CAGE CODE		
MATERIAL		WEIGHT	DRAWING NO		
-	-	-	RESTRICTED TO		
CUSTOMER DRAWING		SCALE NTS	SHEET 2 of 3		REV 1

REVISIONS					
P	LTR	DESCRIPTION	DATE	DWN	APVD
	—	SEE SHEET 1	—	—	—

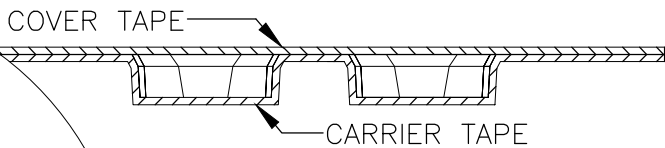
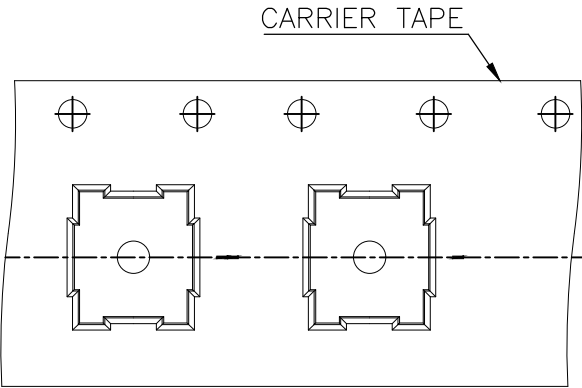
PACKAGING:
3,000 SWITCHES PER REEL

THE DIMENSIONS OF CARRIER TAPE AND REEL:

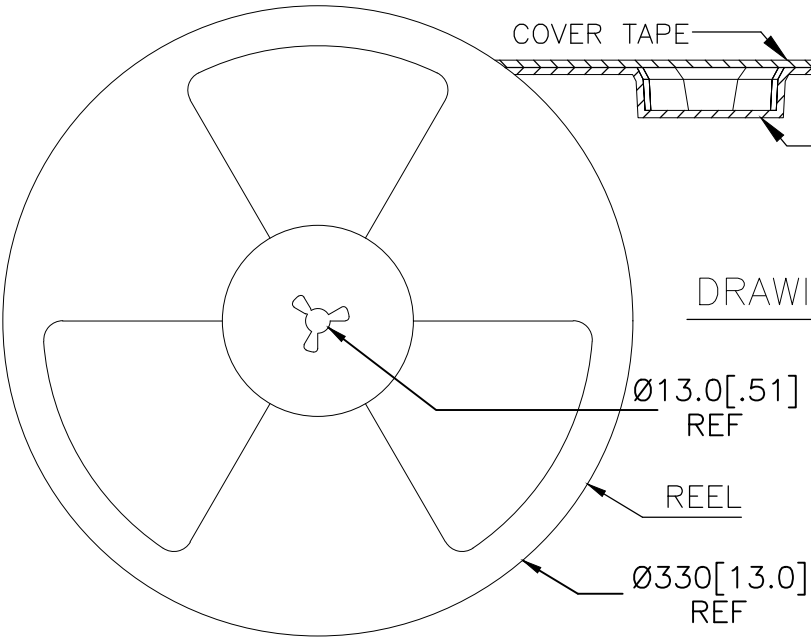
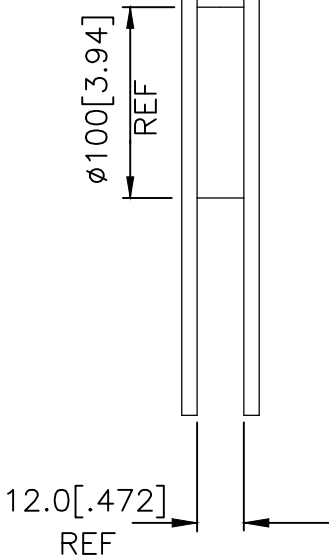


Section B—B


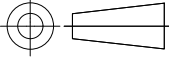
ORIENTATION OF PILOT HOLES



DRAWING DIRECTION



PRELIMINARY

THIS DRAWING IS A CONTROLLED DOCUMENT.		DWN GANESH C M 04JUL2018	 TE Connectivity Ltd.		
		CHK ALEXANDER SHARPE 04JUL2018			
DIMENSIONS: mm [INCHES]		APVD ALEXANDER SHARPE 04JUL2018	NAME SWITCH, TACTILE, LOW-PROFILE, MINI, 5.2 x 5.2 x 2.0, J BEND		
		PRODUCT SPEC	SIZE A3		
		APPLICATION SPEC	CAGE CODE 00779		
MATERIAL —		WEIGHT	DRAWING NO C=2337245		
		FINISH —	RESTRICTED TO —		
CUSTOMER DRAWING			SCALE NTS	SHEET 3 OF 3	REV 1