

4

3

2

1

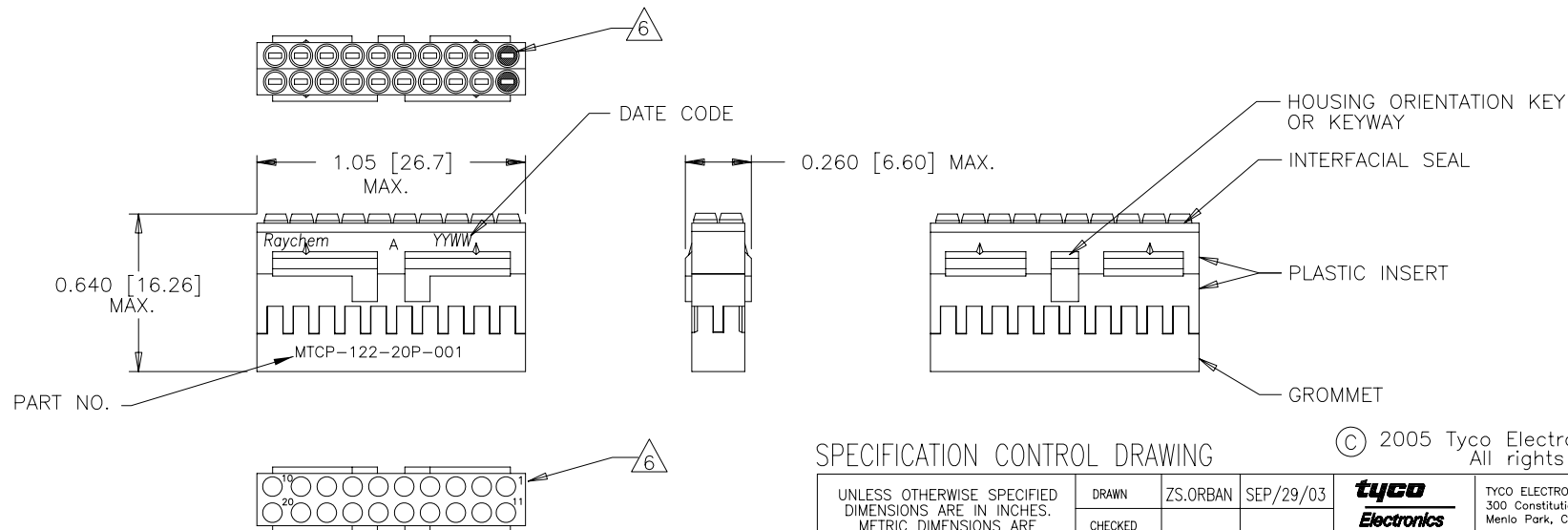
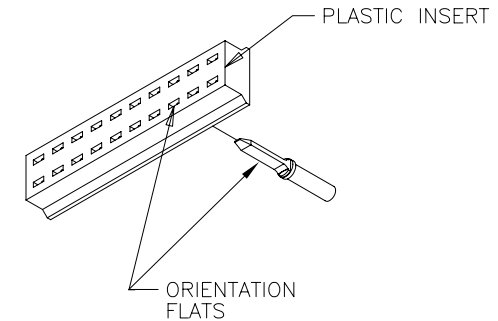
TYCO ELECTRONICS RESERVES THE RIGHT TO AMEND THIS DRAWING AT ANY TIME.  
USERS SHOULD EVALUATE THE SUITABILITY OF THE PRODUCT FOR THEIR APPLICATION.

REVISIONS			
LTR	DESCRIPTION	DATE	APPROVED
A	INITIAL RELEASE PER DCR# T-32064	OCTOBER/1/03	M.HIGGY
B	REVISE PER DCR# C050492	JUNE/20/05	M.HIGGY

#### NOTES:


- THIS INSERT IS DESIGNED FOR USE IN TYCO/RAYCHEM CONNECTOR HOUSING MTC100-JH1-XXX.  
(SEE TYCO/RAYCHEM INFORMATION DRAWING D-659-0097 AND HOUSING SPECIFICATION  
CONTROL DRAWING FOR FURTHER DETAILS).
- PART DESCRIBED HEREON IS SUPPLIED AS SHOWN. REFER TO TYCO/RAYCHEM INFORMATION DRAWING  
D-659-0097 FOR CRIMP TOOLS OR ADDITIONAL CONTACTS, SEALING PLUGS OR TOOLS.
- GROMMET DESIGNED TO SEAL ON WIRES HAVING AN INSULATION DIAMETER OF 0.030 TO 0.065.
- PERFORMANCE:  
THIS PRODUCT IS DESIGNED TO MEET THE APPLICABLE REQUIREMENTS OF RAYCHEM  
SPECIFICATION C-6115.
- MATERIALS:  
A) PLASTIC INSERT HIGH GRADE POLYARYLENE THERMOPLASTIC  
B) GROMMET FLUOROSILICONE PER MIL-R-25988  
C) INTERFACIAL SEAL FLUOROSILICONE PER MIL-R-25988  
D) RETENTION CLIPS (20) BERYLLIUM COPPER 172 PER ASTM B194  
(INSIDE PLASTIC INSERT)

- 6 NUMBER ONE (1) AND ELEVEN (11) CAVITIES ARE MARKED IN CONTRASTING COLOR.  
PART NUMBER, RAYCHEM, A AND DATE CODE ARE STAMPED APPROXIMATELY AS SHOWN.



#### SPECIFICATION CONTROL DRAWING

© 2005 Tyco Electronics Corporation.  
All rights reserved

UNLESS OTHERWISE SPECIFIED DIMENSIONS ARE IN INCHES. METRIC DIMENSIONS ARE IN BRACKETS.	DRAWN	ZS.ORBAN	SEP/29/03	<b>tyco</b> <b>Electronics</b>	TYCO ELECTRONICS 300 Constitution Drive Menlo Park, CA. 94025 USA	<b>Raycho</b>	
	CHECKED						
	APPROVED	M.HIGGY	SEP/29/03	TITLE 1 INCH, INSERT, PIN, 20 CAVITY, SIZE 22-20 REMOVABLE CONTACT SPECIAL MARKING-MTC100 SERIES			
	APPROVED						
DECIMALS .XXX ± .XX ± ANGLES .X ±	CAD NAME C050492.DWG			SIZE C	CODE IDENT. NO. 06090	DWG. NO. MTCP-122-20P-001	REV B
WEIGHT 0.0049 lbs [2.223 g] MAX	THIRD ANGLE PROJECTION			DO NOT SCALE THIS DRAWING		SHEET 1 OF 1	

If this document is printed it becomes uncontrolled.  
Check for the latest revision.

4

3

2