

STD35

User Manual

Revision 1.5



Important information

This technical description contains important information for start up and use of the STD35. Read it carefully before you start working with the STD35.

The warranty will be void should damage occur due to non-compliance with these instructions for use. We cannot accept any responsibility for consequential loss.

We cannot be held responsible for material loss or personal injury that is due to incompetent use or non-compliance with the safety instructions. The warranty will be void in such circumstances.

The STD35 contains highly integrated components which can be damaged by electrostatic discharge if the user would open the housing.

CEP preserves the right to change the included information without notice and doesn't take responsibility for errors in the document and/or missing information.



Therefore only touch the STD35 on the housing or connectors and avoid touching the components on the board.

Safety Instructions



When using products which are exposed to electric voltage the valid VDE-regulations have to be observed. Especially VDE 0100, VDE 0550/0551, VDE 0700, VDE 0711 and VDE 0860 are applicable.

- All wiring work has to be done in a voltage free state only
- All cables and wires which are energized and connected to the device, the module, or components have to be checked regularly for any damage to the isolation shielding or fractures in the cables. If the supply cables are visibly damaged the device has to be taken out of operation immediately until the faulty cable has been exchanged
- Before putting a device into operation, it has to be clarified, whether this device or module is appropriate for the field of application. In case of doubt ask a specialists or the manufacturer of the device.
- Please note that we are not responsible for any errors in usage or connection. Therefore we cannot accept any responsibility for consequential loss.
- Before opening the device always disconnect the mains adapter or make sure that the device is disconnected from the power supply.
- Components, modules or devices have to be built into a housing before they are put into operation. During installation they should not be connected to any power supply .
- You should only use tools on components, modules, or devices if they are disconnected from the power supply, and residual electric charge (which may still be stored in some components inside the device) has been discharged.

- When using components or modules it is necessary to strictly observe the specification given in the corresponding description of these components.
- If a description for a private end-customer does not clearly state which electric data is valid for a component or a module, how to wire the device, which external components, or additional devices can be connected or which parameters these components are allowed to have, a specialist must be contacted.
- Devices which operate with greater than 35 Volts have to be connected by a specialist.
- Before putting the device into operation it should be checked that there is no current leakage on the housing.
- In case that measurements with the opened housing are necessary, an isolating-transformer has to be integrated for safety reasons. Alternatively the voltage can be supplied by an appropriate power supply which complies with the safety regulations. All wiring work has to be done in a voltage free state only.

Table of Contents

Important information	2
Safety Instructions	2
1 Introduction	5
2 Background Information	6
2.1 GSM-Network in general	6
2.2 GPRS	6
2.3 Quadband Frequencies	6
2.4 E-Mail via SMTP	6
3 Operating Conditions	7
4 Proper Use	8
5 Introduction	8
6 Quick start up	11
6.1 General preparations	11
6.2 Hardware preparations	11
6.3 Configuration Call	12
6.4 Quick configuration check	13
7 SMS Commands	13
7.1 Table of SMS Commands	14
7.2 Variable substitution	19
7.3 Send SMS Commands	20
7.4 Explanation of the commands	21
7.5 Examples for SMS Commands	22
8 E-Mail functionality via GPRS	23
8.1 Configuration of the E-Mail functionality	23
9 Connecting the camera	24
10 Configuration Tool	25
11 Troubleshooting	26
12 Writing examples	27
13 Accessories	30
14 Technical data	31
15 Document history	32

1 Introduction

Thank you very much for purchasing our CEP STD35 telemetry device!

The STD35 offers the user the possibility to remotely switch ON or OFF electronic devices and to receive alarm messages via (SMS). You can switch devices either with an SMS or using a simple voice call. Alarm messages (SMS) can be received with any mobile phone supporting SMS functionality.

With the new generation of the STD35 you now also have the possibility to receive alarm messages via e-mail.

With the help of the digital camera which is available as an accessory, pictures can be taken and sent via e-mail triggered by an alarm.

We wish you success and joy in using your new STD32!

Concerning the user manual

This document is meant to help you use the various functions of the device in the most optimal way. Therefore we ask you to please read this manual carefully.

If you are in a hurry and want to make yourself familiar with the details of the product later, then please read chapter 6 "Quick Start-up" first.

There you will find all necessary information to put the device into operation.

The information in this document has been gathered after thorough inspection but they are not being taken as assurance of end product properties.

The written approval of CEP AG is mandatory before you can pass on or reproduce this documentation for this product or the software or use the content.

CEP reserves the right to change the data mentioned here without prior notice and does not take any responsibility for technical inaccuracies and/or omissions. This manual has been thoroughly checked; should you nevertheless find an error or want to express criticism or make suggestions, please send an e-mail to

E-Mail: support@cepag.de

Oberhaching, 9th Dec 2013

© 2013 CEP AG, Oberhaching, Germany

This is an example of text for the main body. Style name: Text – Standard

2 Background Information

2.1 GSM-Network in general

The GSM Network (Global System for Mobile Communications) is a standard for all-digital mobile phone networks. GSM has been created to provide a mobile telephone system offering the users Europe wide mobility and voice services compatible with ISDN or analog services.

Originally GSM has been designed for voice calls, the transmission of text messages (SMS) and the transmission of data with a constant data speed. With the success of the internet an evolution of GSM started. The GSM network was expanded to offer packet oriented data transmission (e.g. via GPRS) while keeping all other features and being fully downwards compatible.

2.2 GPRS

GPRS (General Packet Radio Service) is a packet oriented transmission service which is used in the mobile networks and which is supported by almost all network providers.

With GPRS you only have a virtually existing permanent connection to the other party. Only when you really transmit data will the channel will be used, otherwise it is free for other users. This means that no channel will be reserved permanently for a user (as it is with a GSM voice call). Therefore the GPRS-bills depend more on the actual data volume transmitted than on the connect time.

If the device is booked into the GPRS-Net it will automatically be assigned an IP-Address and can exchange data with any server accessible via the internet,

Before you can use the GPRS-Interface the SIM-Card must be activated for GPRS. To order this functionality please talk to your mobile network provider.

2.3 Quadband Frequencies

When a device is "quadband" it means that it uses the four major GSM frequencies and that it is compatible with most GSM networks worldwide.

These four frequencies are 850 MHz and 1900 MHz (on the American continent) and 900 MHz and 1800 MHz, which are used in almost all other countries worldwide (Europe and Asia).

In contrast to a triband mobile phone which only supports 900/1800 and 1900 or 850/1800 and 1900 a quadband device can be used in almost every GSM network worldwide.

2.4 E-Mail via SMTP

SMTP (Simple Mail Transfer Protocol) is a method used to send e-mails over the internet. The handling will be done by a mail programme, which is running in this case on the STD35 and which supports SMTP. For the user this process is invisible. This programme establishes a connection to a SMTP server which will transport the e-mail to the given e-mail address with the help of further SMTP servers if necessary.

To be able to use this service you must have an e-mail account with a mail provider (e.g. AOL or Yahoo) and the following settings have to be made which are different for every mail provider

- Name of the SMTP Server (e.g. smtp.mailprovider.com or 192.168.234.12)
- User name to register to the SMTP Server
- Password to register to the SMTP Server

The device comes pre configured to use the free CEP email server. If the user wishes to use there own email service it is important to note it must support plain text authentication and Emails with no SSL-Encyption

To see which settings have to be used on the STD35 to be able to take advantage of this service please read chapter 8.

3 Operating Conditions

Operate the STD35 only with a supply voltage between 7-32V DC and have in mind the polarity! (see picture1) Use a stabilized power supply with minimum 1A output current. (We recommend using only the original CEP power supply). If you use a mains adapter for power supply it has to conform to the VDE regulations.

- Loads connected to the device are not allowed to exceed 30 W per relay.
- The maximum output voltage is 30 V AC/DC
- The maximum switching power per relay is 1 A
- When installing the device make sure that the supply cable has a sufficient diameter
- During operation the temperature has to be between -30° and 75° Celsius.
- Protect the PCB of the device from humidity, spray water and heat.
- In case of condensation allow a period of about 2 hours for acclimatisation.
- Do not operate the device in areas where inflammable gas, vapours, or dust are or could be present.
- Do not expose the device to heavy vibrations.
- The unit may only be repaired by a specialist.
- Only original parts have to be used when repairing the unit. The use of differing spare parts can cause serious material loss or personal injury.
- No special operation position of the device has to be observed.

4 Proper Use

The device is designed for the remote switching of devices via the GSM network as well as the remote retrieval of status information of the inputs and the generation of SMS messages or e-mails after status has changed at the inputs. A different utilization of the device other than the one described above is not allowed.

5 Introduction

The STD35 is a telemetry module which is easy to install and simple to use. It can be configured using any GSM mobile phone, SMS capable software, or the CEP STD35 configuration tool (sold separately).

With the STD35 you can control five relays and monitor the status of three digital and two analog inputs with one or several common mobile phones.

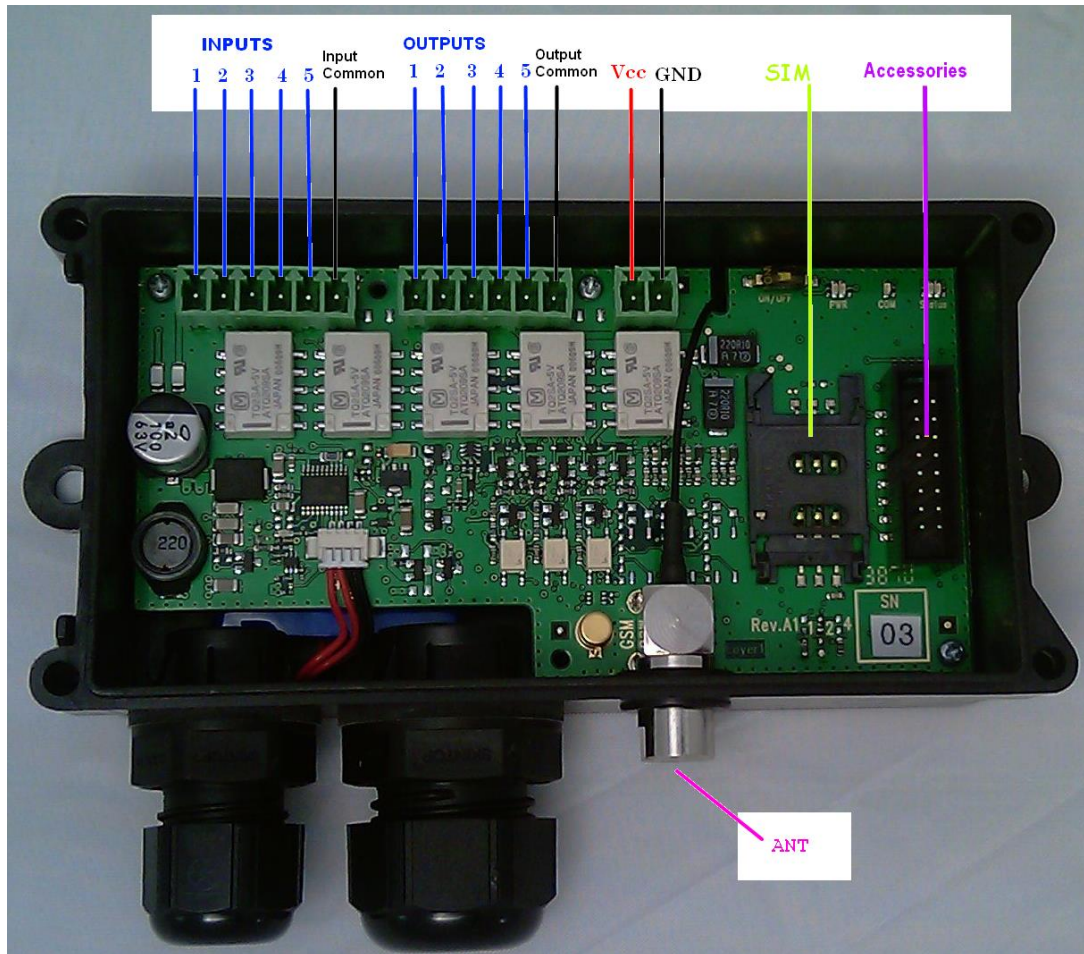
Apart from the STD35 you only need a valid SIM Card of any network provider (GSM850 / 900 / 1800 or 1900 MHz)

While using prepaid SIM-cards one shall always keep aware of the amount of remaining credit left on the card, so that in case of alarms a message can be sent.

Typical fields of application are:

- the opening of (garage) doors
- switching on and off light and alarm devices as well as generating alarm messages (SMS or e-mail)
- the retrieval of information from door sensors, movement sensors or level sensors
- etc.

You can for example open your garage door with a call or get a message (via SMS or e-mail) in case your house alarm system gets triggered. In connection with the CEP camera you can get a photo via e-mail when a movement sensor connected to the STD35 detects movement.



Connectors

As described in figure 1 the STD 35 has 3 Green Screw terminals. One connector is for the 5 inputs (3 digital and 2 analog/digital). Another connector is for the 5 outputs which are all driven by relays. And the third screw terminal connector is for the power supply.

On the right side of the diagram an additional accessory interface connector is shown. This connector is for use with the optional CMOS camera or the CEP Configuration tool.

ANT: connect the GSM antenna with FME-female connector here.

Please observe the maximum output voltage of the relays and the maximum input voltage of the inputs! In chapter 3 "Operating conditions" you will find further information on this.

LED Signals

The STD35 has several LEDs which can be used to determine the current state of the device.

There are two power LEDs. A red power led that is illuminated when charging is taking place, when not charging (battery full, or no charger is connected) it is off. A green power led saying that is illuminated whenever the device is on. Normally this led reflects the state of the power switch.

There is also a Yellow "COM" led it gives information regarding the current GSM status:

- stable in indicates the device is not currently booked into the GSM network
- blinking once every 2 seconds indicates the device is booked into the GSM network as normal.

There are also separate red and green status LEDs. Under normal operating conditions these two LEDs are not illuminated. However status red and status green can toggle if there is no configuration yet (when in factory default state).

The status LEDs and GSM led (COM) will blink twice if no simcard (or an invalid simcard) has been inserted. The status LEDs and GSM led (COM) will blink three times if the SIM PIN is different than "0000" or "2468".

Switch:

There is also a small power switch between the power connector and the LEDs. This switch is used to turn the device on and off.

6 Quick start up

In the following section it is described step by step what you have to do to begin using the STD35 without extensive setup.

6.1 General preparations

You need an activated SIM card of a GSM network provider. The PIN of this card has to be set to "0000" (4 times zero).

Alternatively you could use the PIN "2468". To change the PIN you can use a common mobile phone. The instructions how to change the PIN are described in the manual of your mobile phone.

If you use a SIM card with a PIN different from "0000" or "2468" in the STD35, the STD35 will use a "wrong" PIN. After the second attempt to power up the device your SIM card will be blocked. In this case you need to use the "Super-PIN" or "PUK" to assign a new PIN to your card. Please look into the user guide of your mobile phone. There you find how to use the PUK to de-block the SIM card.

Should you wish to use a SIM card which does not require a PIN, this is also possible and the STD35 recognizes this and will behave accordingly.

In the following we will refer to the "master mobile" as the mobile telephone which you want to use to switch the outputs **and** to configure the STD35 via calls.

To be able to administer the STD35 with your master mobile it is necessary that the "incognito" or "private call" function of the mobile is deactivated. This means the master mobile **has to** transmit the mobile telephone number with every call. To change the settings please refer to the user guide of your mobile telephone.

To test the setting you can call a different mobile phone; there your phone number or name should be displayed.

6.2 Hardware preparations

Before connecting the supply voltage and switching on the STD35 please insert the SIM card into the SIM card holder on the PCB of the STD35: To open the SIM card holder move it sideways and flip it open; insert the card (mind the proper orientation of the card) and close it again. To lock it in place move the top sideways in the opposite direction.

Now please connect the GSM antenna which is part of the delivery to the proper antenna connector on the STD35 board.

After that connect the power supply and switch the device on.

Please always observe the polarity (see picture 1) and that you have a proper power supply.

6.3 Configuration Call

After having connected the power supply and turning the device on the green power LED will be illuminate (system start). Shortly after that the GSM LED will be activated. Now the STD35 will automatically try to connect to the GSM network. As soon as this is done, the GSM LED will be flashing once every 2 seconds.

As soon as the red and green system LED are toggling the STD35 is ready and waiting for the configuration.

Now call with master mobile the phone number of the SIM card which is inside the STD35. The STD35 will accept the call and cancel it a few seconds later. During this call, a four digit DTMF sequence is sent to the caller and you will hear them on your mobile phone.

With this call the STD35 is configured to the master mobile.

NOTE: when calling with the master phone it is necessary caller ID is not blocked, or configuration call will not work correctly!

Pay attention:

As long as the STD35 still has the factory defaults it shows this by the toggling the red and green system LEDs. From this moment on you have three minutes to configure the STD35 with the configuration call.

After 3 minutes (without configuration call done in between) the device switches off. If you switch it on again afterwards the STD35 is again expecting the configuration.

In case the STD35 will be disconnected from the power supply for longer than 120 seconds (e.g. by a power failure) after a successful configuration it will automatically send a SMS/E-mail with the text "START-UP ALARM" to the preconfigured telephone number as soon as the power supply is established again.

6.4 Quick configuration check

To check whether the configuration was successful you can now make the following quick configuration check.

Take your master mobile and call the telephone number of the SIM-Card inside the STD35. This call should be cancelled by the STD35 and the Relay 1 should switch for one second.

Now the basic configuration is done which means that all future events will be sent to the master mobile and that Relay 1 can be switched from that mobile phone.

To use the additional functions of the STD35 please continue reading chapter 7 "SMS commands"

7 SMS Commands

In order to configure the device, request information from it, or trigger certain actions special commands are used. All the commands are designed to be easy to enter even when using a standard phone to send them via SMS. This chapter of the manual describes all the commands the device will understand and how to use them.

With the optional CEP configuration tool available for the STD35, you can make all the settings below from the comfort of your PC.

7.1 Table of SMS Commands

Configuration Commands	
R:	reset default device settings
ST?	request device status SMS
S:	1 - enable startup SMS
	0 - disable startup SMS
C2:	set phone number nr 2
C3:	set phone number nr 3
C4:	set phone number nr 4
C5:	set phone number nr 5
PN:	set different password (max 4)
E1:	set message text for INPUT 1 event (max 64)
E2:	set message text for INPUT 2 event (max 64)
E3:	set message text for INPUT 3 event (max 64)
E4:	set message text for INPUT 4 event (max 64)
E5:	set message text for INPUT 5 event (max 64)
PT:	set message text for POWER-UP event (max 64)

Inputs & Outputs commands	
O1ON	turn relay 1 on
O1OFF	turn relay 1 off
O2ON	turn relay 2 on
O2OFF	turn relay 2 off
O3ON	turn relay 3 on
O3OFF	turn relay 3 off
O4ON	turn relay 4 on
O4OFF	turn relay 4 off
O5ON	turn relay 5 on
O5OFF	turn relay 5 off
O1:xxxxx	defines time period for relay 1 action (in seconds) 0 = infinite
O2:xxxxx	defines time period for relay 2 action (in seconds) 0 = infinite
O3:xxxxx	defines time period for relay 3 action (in seconds) 0 = infinite

O4:xxxxx	defines time period for relay 4 action (in seconds) 0 = infinite
O5:xxxxx	defines time period for relay 5 action (in seconds) 0 = infinite
A1:xxxxx	defines delay for relay 1 reply (in seconds) 0 = no message
A2:xxxxx	defines delay for relay 2 reply (in seconds) 0 = no message
A3:xxxxx	defines delay for relay 3 reply (in seconds) 0 = no message
A4:xxxxx	defines delay for relay 4 reply (in seconds) 0 = no message
A5:xxxxx	defines delay for relay 5 reply (in seconds) 0 = no message
I1:xxx	debounce time for input 1 (in seconds)
I2:xxx	debounce time for input 2 (in seconds)
I3:xxx	debounce time for input 3 (in seconds)
I4:xxx	debounce time for input 4 (in seconds)
I5:xxx	debounce time for input 5 (in seconds)
V1:x	1 - invert input 1
	0 - normal input 1
V2:x	1 - invert input 2
	0 - normal input 2
V3:x	1 - invert input 3
	0 - normal input 3
V4:x	1 - invert input 4
	0 - normal input 4
V5:x	1 - invert input 5
	0 - normal input 5
A1L:	set analog input 4 low threshold (millivolts)
A1H:	set analog input 4 high threshold (millivolts)
A2L:	set analog input 5 low threshold (millivolts)
A2H:	set analog input 5 high threshold (millivolts)
BAT:	set low battery threshold (millivolts)
BCT:	set charger timeout - time in seconds before device goes to sleep when Vcc is disconnected. default is 120; 0 = infinite

CLIP commands	
CL:	add clip list number, asterisk symbol (*) is also supported
CD:	remove clip list number

DATA commands	
EMAIL:	1 - enable email feature
	0 - disable email feature
	default is enabled
SMTPIP:XXXXX	defines SMTP server IPv4 address
	example SMTPIP:"smtp.aol.com"
	max length is 32
SMTPPORT:	defines SMTP server PORT
	example SMTPPORT:2121
	value must be a number, in range 0..
	default is 25
APN:	defines GPRS APN (for emails)
	example APN:internet
	max length is 32
	default is internet
APNUSR:	defines GPRS USERNAME (for emails)
	example APNUSR:Patryk
	max length is 32
	default is empty
APNPWD:	defines GPRS PASSWORD (for emails)
	example APNPWD:Patryk
	max length is 32
	default is empty
SMTPUSR:	defines smtp username (used for authentication - this is not APN username!)
	example SMTPUSR:"p.szymczak"
	max length is 64 (according to RFC0821, chapter 4.5.3. SIZES)
	default is empty
SMTPPWD:	defines smtp password (used for authentication - this is not APN password!)
	example SMTPPWD:"p.szymczak"

	max length is 64 (according to RFC0821, chapter 4.5.3. SIZES)
	default is empty
FROM:	defines email sender
	example FROM:"p.szymczak@cetec.cc"
	max length is 25
	default is empty
TO:	defines up to 5 email recipients (separated by ";"), each one max 25 characters
	example TO:"support@cepag.de"
	max length of field is 129 $[(5*25+1)-1]$
	default is empty
TO1:	defines recipient address for INPUT 1 event
SUB1:	defines email subject that will be sent to "TO1" address
TO2:	defines recipient address for INPUT 2 event
SUB2:	defines email subject that will be sent to "TO2" address
TO3:	defines recipient address for INPUT 3 event
SUB3:	defines email subject that will be sent to "TO3" address
TO4:	defines recipient address for INPUT 4 event
SUB4:	defines email subject that will be sent to "TO4" address
TO5:	defines recipient address for INPUT 5 event
SUB5:	defines email subject that will be sent to "TO5" address
TO6:	defines recipient address for STARTUP event
SUB6:	defines email subject that will be sent to "TO6" address
TO7:	defines recipient address for CALL event
SUB7:	defines email subject that will be sent to "TO7" address
TO8:	defines recipient address for PHOTO event
SUB8:	defines email subject that will be sent to "TO8" address
TO9:	defines recipient address for MOTION event
SUB9:	defines email subject that will be sent to "TO9" address
TO10:	defines recipient address for STATIONARY event
SUB10:	defines email subject that will be sent to "TO10" address
BODY:	defines general body content that can contain substitution variables

Camera commands	
CAM:	0 - disable camera feature
	1 - enable camera feature with photo size 80×64
	3 - enable camera feature with photo size 160×128
	5 - enable camera feature with photo size 320×240
	7 - enable camera feature with photo size 640×480
	default is 7 - enabled, with the biggest photo size
PHOTO	used without any parameters, triggers email with cam photo sending
MOTION:	set motion sensitivity parameter (default is 3), max is 9
STATIONARY:	set stationary parameter (default is 60), max is 999
MTEXT:	set message text for MOTION event (max 64)
STEXT:	set message text for STATIONARY event (max 64)
MS:	1 - enable motion sensor feature
	0 - disable motion sensor feature
	default is enabled
FS:	1 - enable first stationary event
	0 - omit first stationary event
DOTA commands	
DOTAAPN:internet.DOTAAPNUSR:"".DOTAAPNPWD:"".DOTAREQ.	
DOTAUSR:	set FTP username (max 16)
DOTAPWD:	set FTP password (max 16)
DOTASERVER:	set FTP server IPv4 or domain (max 64)
DOTAFILE:	set filename (max 64)
DOTAAPN:	set APN (max 24)
DOTAAPNUSR:	set APN username (max 12)
DOTAAPNPWD:	set APN password (max 12)
DOTAREQ	trigger DOTA
For Information about software update with DOTA (Download Over The Air) please contact our Support (support@cepag.de)	
Misc commands	
VERSION?	requests current software version

7.2 Variable substitution

In order to display some information in event texts it is possible to include in event text strings "variables". When a variable is included in an event text string, the variable is replaced by the value it is intended to represent in the string that is sent to the user, either via SMS or email.

The following table describes the available variables and the data they represent

- \$CALID\$

last incoming CLIP number

- \$CNT\$

X/Y (where X is sent SMS counter and Y is sent EMAIL counter)

- \$IN1\$, \$IN2\$, \$IN3\$, \$IN4\$, \$IN5\$

current input value as a string (LOW or HIGH)

- \$OUT1\$, \$OUT2\$, \$OUT3\$, \$OUT4\$, \$OUT5\$

current relay value as a string (ON or OFF)

- \$IN1T\$, \$IN2T\$, \$IN3T\$, \$IN4T\$, \$IN5T\$

current input value as a integer (0 or 1)

- \$OUT1T\$, \$OUT2T\$, \$OUT3T\$, \$OUT4T\$, \$OUT5T\$

current relay value as a integer (0 or 1)

- \$VBATM\$

battery voltage in milivolts (integer)

- \$VBAT\$

battery voltage in volts (float)

- \$VMAINSM\$

mains voltage in milivolts (integer)

- \$VMAINS\$

mains voltage in volts (float)

- \$VIN4M\$

input 4 voltage in milivolts (integer)

- \$VIN4\$

input 4 voltage in volts (float)

- \$VIN5M\$

input 5 voltage in milivolts (integer)

- \$VIN5\$

input 5 voltage in volts (float)

Example: E1:battery=\$VBAT\$. This will send a text message that returns to the configured number the current battery voltage in the message.

7.3 Send SMS Commands

By sending a SMS to the STD35 you can switch the outputs or make individual configuration settings.

Those SMS have the following format which is described below:

In order to avoid unauthorized usage, every configuration command to the STD35 must start with a 4-digit password.

The last four digits of the IMEI being the password for your device must always be kept a secret. In this example the keyword is "4244".

You find your Devices IMEI printed on a sticker on the back of the housing.

The IMEI cannot be changed! Although the password can be changed if needed for security purposes, you should keep in mind that every command – including setting back to factory settings – requires the knowledge of the password.

All commands (except R: and ST?) must end with a full stop "."!

If you need a full stop "." in a parameter as it is for example in an e-mail address or in some APN-settings, the complete parameter has to be put into inverted commas ("...") (e.g. "h.muster@aol.com"), as otherwise the "." would be seen as the end of the command.

All commands can be sent in one SMS; each command has to be separated from the next by a full stop (see examples).

The parameters for the seconds e.g. command "O1:xxxxx." can have 1-5 digits. Valid parameters are e.g. 1 (for 1 second), 90 (for 90 seconds) or 99999 for (99999 seconds). No leading "zeros" have to be added. Example: "O1:110" stands for 110 seconds.

Please observe the difference between the figure '0' and the letter 'O'!. ("O1ON." contains twice the letter O; "V1:0." contains once the figure 0)

7.4 Explanation of the commands

Switching outputs via SMS

- After the STD35 has received a SMS with the text "O1ON." (Output 1 ON) from the configured mobile phone, the relay 1 switches for one second. With the SMS "O2ON." relay 2 switches for one second.
- To get feedback of the actual status of the inputs and outputs just send a SMS with "ST?"

Configuration-SMS (attention 4-digit keyword required!)

- The SMS "R:" sets the STD35 back to the factory settings. Please note that this SMS can be sent from **any** mobile phone as long as the 4-digit keyword is known. This ensures that the STD35 can still be used even if the original master mobile (phone number) is no longer available.
- You can activate or deactivate the Start-up SMS (START-UP ALARM) with the SMS "S:x." (x = 1 or 0).
- A SMS with the text "O1:xxxxx." or "O2:xxxxx." (xxxxx = seconds) configures the switching time of the relays. The STD35 saves these settings so that they are still available after the supply voltage has been restored.
- If the switching time has been set to 0 by a configuration SMS the corresponding relay switches permanently at every call. If the relay has been active before it will afterwards be inactive and vice versa. In this case a SMS with the text "O1ON." from the configured mobile phone switches the relay 1 permanently on. A SMS with "O1OFF." permanently switches off relay 1. Relay 2 reacts accordingly to SMS messages with "O2ON." and "O2OFF."
- The SMS "A1:xxx." or "A2:xxx." (x = seconds) sets the delay after which a reply SMS is sent after an output has been activated. This can be helpful if you want to switch something on or off and would like to measure the result of this output control with one of the inputs of the STD35. Therefore the new status *after* the switching of the output is transmitted. If parameter is set to "0" no message will be sent.
- With a SMS containing the text "I1:xxx." or "I2:xxx." (xxx = seconds) you can configure the time the inputs have to be activated before the STD35 sends out an alarm SMS
- A SMS with the text "V1:x." or "V2:x." (x = 1 or 0) can change the polarity of the inputs. If x=1 an alarm SMS will be sent in case the input is deactivated for the configured Time. The default value is x=0 which means that the STD35 will send an event alarm in case the input has been **activated** longer than the configured time.

Please note that the brackets "<" and ">" in the following commands are not part of the commands but are included in order to increase the readability of the overview!

Four additional alarm numbers (mobile phones) can be defined using C2: - C5: commands. These numbers are allowed to set relay 1 by a call and they are informed via SMS in case of Start-up or events. These numbers are not allowed to send configuration SMS messages unless they include the password in the SMS.
If an alarm number is given in international format, the number must start with '+'.
(e.g. +491721234567)

- With the "PN:<4digit password>." command the password can be changed. The password can include letters and figures but no special characters are allowed. All letters have to be in capital. The standard password (factory setting) is the last 4 digits of the IMEI (see chapter SMS Commands).
- The texts of the event or start-up SMS can be changed with the commands "E1:<text1>.", "E2:<text2>."... and "PT:<startup text>.". The message length must not exceed 64 characters. **Do not use command syntax inside a message text. The '.' is the terminating character of the text. Each new text must be sent in a separate SMS.**
- You can generate an extended clip list of 1000 clip numbers. The numbers stored in the clip list are allowed to switch relay 1 with a phone call. Use "CL:" to generate the clip list and add further phone numbers. With "CD:" you can delete a phone number from the list. Be aware that you cannot read out the clip list (getting SMS messages) because it could by far exceed the size limitation of SMS texts.
- With the command "TOx:<text>." (x = 1 to 10, see command list above) an email address for the particular events is configured. 5 email Addresses can be configured, divided by <;>. The maximum length of the particular email addresses is 25 signs.
- With the command "SUBx:<text>." (x=1 to 10, see command list above) the subject of the particular emails is configured. The maximum number of signs for the subject is 128 signs. The predefined text is: "STD35 Event x".
- The content of the Email is configured with "BODY:<text>.". The maximum length is 143 signs.
- The email sender address (of the STD35) is changed with "FROM:<text>.". The maximum length is 25 signs.

Please note that all commands listed in the section "Configuration SMS" require the 4-digit keyword at the beginning.

7.5 Examples for SMS Commands

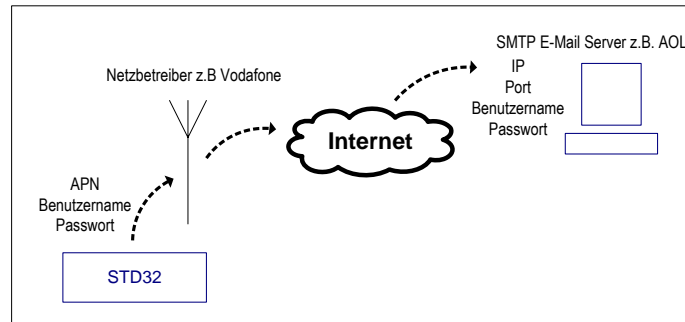
Please note that for these examples the 4-digit password 4244 has been chosen. Instead of this password you have to use your 4-digit password of your STD32!

Start-up alarm off, relay 1 on, relay 2 off, time of activation of input 1: 5 sec	4244 S:0.O1ON.O2OFF.I1:5.
Switching time of relay 1 = 90 seconds	4244 O1:90.
Reset settings to factory settings	4244 R:
Configuration of the second alarm number	4244 C2:+491721234567.
Deleting a alarm number	4244 C2: "".
Configuration of a new password	4244 PN:AB12.
Adding a new clip to the extended clip list	4244 CL:+491721234567.

Removing the clip from the extended clip list:

4244 CD:+491721234567.

8 E-Mail functionality via GPRS



The STD35 offers you the possibility to get messages via SMS and via e-mail.

8.1 Configuration of the E-Mail functionality

By default if the user has correctly configured the APN settings and the receiver email address email functionality should work. This is because smtp settings are by default already configured using the CEP email server.

If you need a full stop "." in a parameter as it is for example in an e-mail address, the complete parameter has to be put into inverted commas ("...") (e.g. "h.muster@aol.com"), as otherwise the "." would be seen as the end of the command.

GPRS settings (to set up an internet connection)	
Name of the APN (Access Point Name)	APN:<text>.
User name for APN	APNUSR:<text>.
Password for APN	APNPWD:<text>.

- With the commands "APN:<text>.", "APNUSR:<text>." and "APNPWD:<text>." you make the basic settings to build up a GPRS (internet) connection. You need to get the necessary data from your GSM network provider

9 Connecting the camera

The STD35 offers the possibility to monitor an object or a room with the help of the CEP camera optional accessory for the STD35

A picture can be sent as an attachment to the preconfigured e-mail address in the case of an alarm. This allows you to take further action if necessary (e.g. call the police if you see a burglar on the photo)

To be able to use this functionality you only have to connect the CEP camera to the camera plug on the STD35 (see picture 1) and to activate the email-feature and the camera.

After the software of the STD35 has recognized the camera the pictures can be sent via e-mail in the following ways:

- E-mail with JPEG attachment in alarm situation
- E-mail with JPEG attachment after incoming call
- E-mail with JPEG attachment after SMS request

In case the light intensity is not enough at the survey area the infrared light of the camera will be activated automatically. Please note that due to the infrared light there will be a loss of colours in the picture.

The CEP camera has an adjustable sun shade (metal plate over the camera). Please take into consideration when adjusting the sun shade that the shadows are often changing during the day.

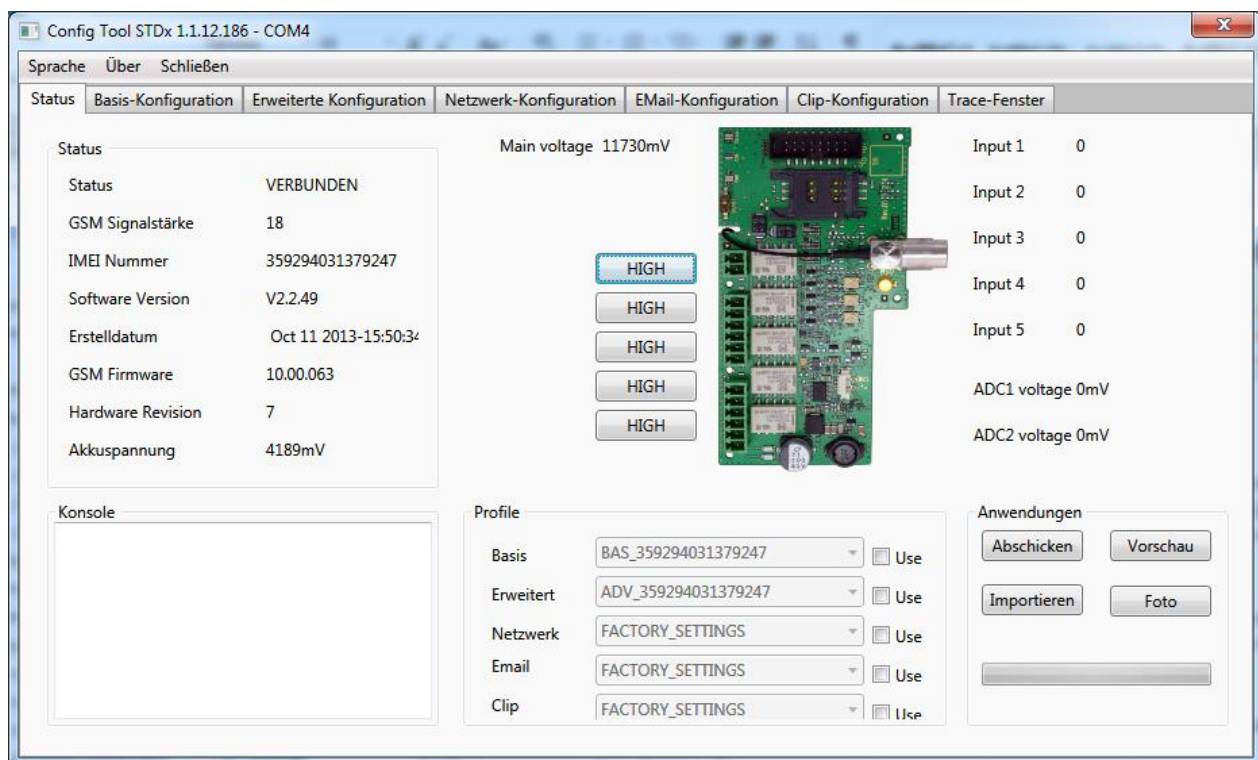
TIP: To make sure that all desired objects will be in the picture, that the sun shade is in a good position and/or that the illumination of the room will lead to satisfactory picture we recommend to take "test pictures" after the installation. Only then you can rely on the full functionality of the CEP camera.

10 Configuration Tool

Besides configuring the STD35 via SMS or using a configuration call it is possible to use the CEP configuration tool to implement all setting. This tool allows the user to connect the device to a standard PC via a special STDx accessory cable.

Once the cable is connected the STD35 can be monitored and completely configured using the software provided. The configuration tool allows the user to configure devices without having to manually construct SMS commands or send any SMS to the device.

You will get the further information via info@cepag.de.

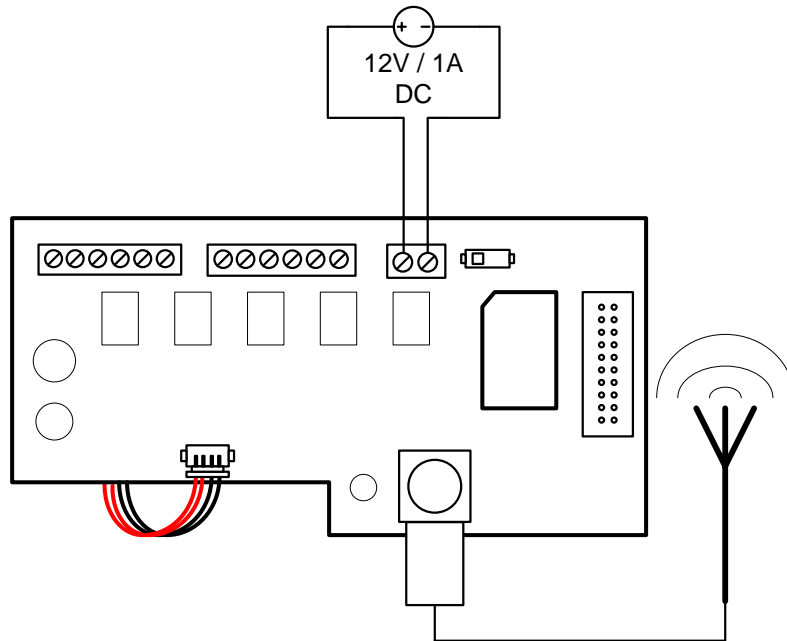


11 Troubleshooting

Problem	Possible Reason	Solution
GSM LED stays dark	No supply voltage-	Connect power supply
GSM LED blinks twice cyclically	No SIM card / Improper contact with SIM card	Insert SIM card properly or carefully clean contact area of SIM card
GSM LED blinks thrice cyclically	PIN is not "0000" or "2468"	Change SIM card's PIN to "0000" or "2468"
GSM LED constantly on	No GSM network available / no antenna connected	Connect antenna / Change antenna position
GSM LED dies after 3 minutes	No configuration	Make configuration call
STD35 does not react on configuration call (not accepting the call)	Device is already configured	Set back to factory settings
STD35 does not react to a configuration SMS	Wrong IMEI number in the SMS / SMS not yet delivered	Check IMEI number. / Wait until SMS is delivered
STD35 does not react to an SMS, or call, although booked to the network	The mobile phone does not transmit the phone number ("Incognito")	Activate the transmission of the phone number in your mobile phone
System LEDs toggle	No configuration call received by STD35	Make configuration call

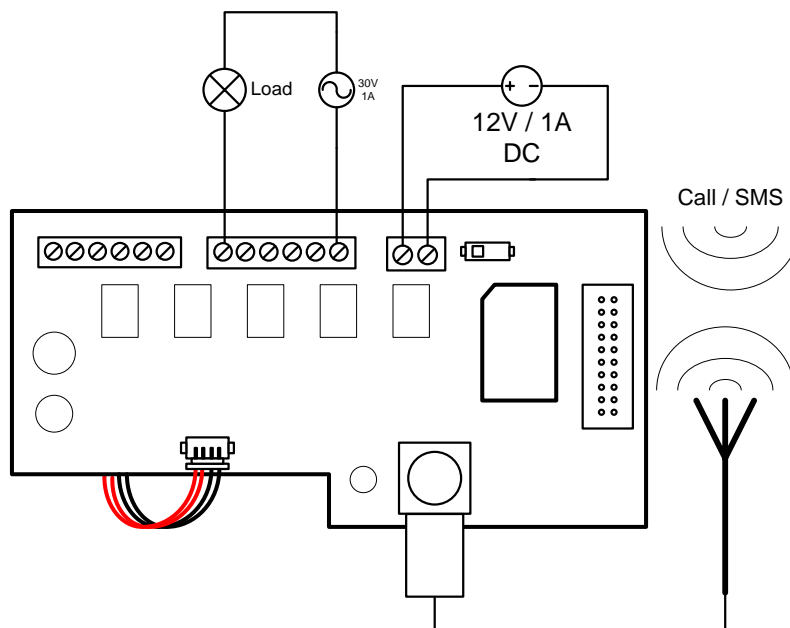
12 Writing examples

1. Alarm message when power supply is connected through sensor or switching contact



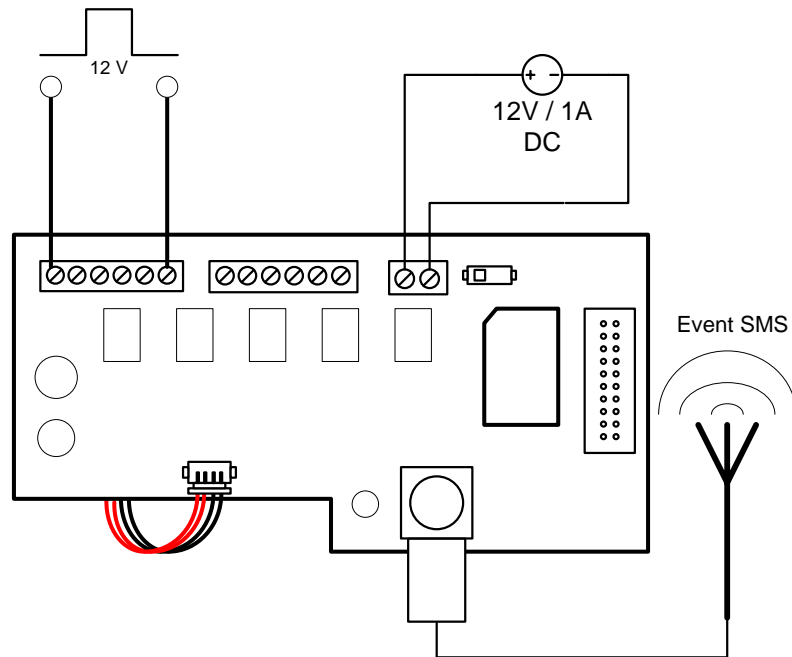
Connect the STD35 to a 12V power supply and you will receive a SMS on your mobile phone (or an e-mail to the preconfigured e-mail address) as soon as the device is booked into the GSM network. The message type is the Start-up alarm message. The power supply can be provided e.g. by a door contact or another alarm sensor.

2. Remote switching of electric devices via voice call or SMS



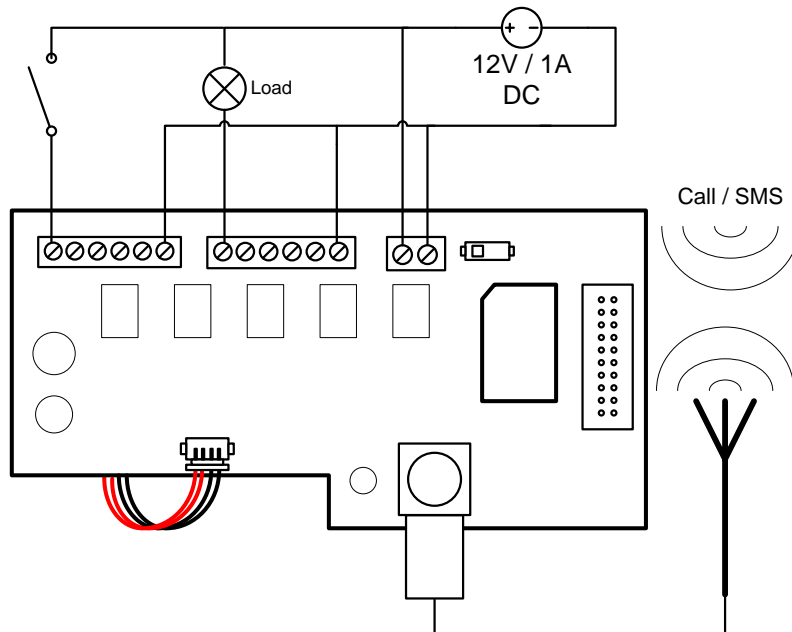
Call the configured STD35 with your mobile phone or send a SMS command and you can switch any electric device up to 30V / 1A (e.g. heating system, air condition, alarm system, garage door etc.).

3. Sensor / alarm message via SMS / e-mail as soon as an input is supplied with 12V



Connect one input of the configured STD35 with 12V power supply and you will get an alarm SMS to your mobile phone or an alarm e-mail to the preconfigured e-mail address (e.g. triggered by an existing alarm system, infrared sensor, temperature sensor, fluid level sensor, door contact etc.).

4. Remote switching of electric devices which are connected to the power supply via voice call or SMS




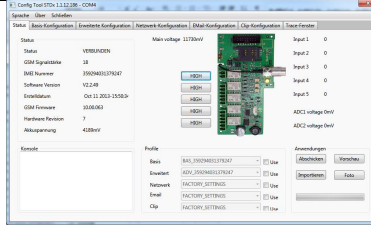


Call the configured STD35 with your mobile phone or send a SMS command and you can switch an electronic device which uses the connected power supply voltage.

13 Accessories

CEP GmbH is offering accessory parts for the STD35 which have been thoroughly tested to work with the STD32 and which have been approved for the use with the STD35. Therefore we strongly recommend to use only accessory parts of CEP AG. The warranty will be null and void if you use other than the original CEP accessory parts.

Please contact your supplier or CEP GmbH regarding the original accessory parts. The recommended accessory parts mainly consist of :

<p>GSM – magnetic antenna -Part-Number 12001 FME – female connector and 2,5m cable</p>	
<p>GSM – roof mount antenna -Part – Number 12006 FME – female connector, 3m cable, waterproof</p>	
<p>CEP Camera -Part- Number 14005 Camera with plug for STD35 and 2,5m cable (incl. infrared light for photos in dark environment)</p>	
<p>Configuration Tool & Cable -Part Number 16203 STD35 accessory connector</p>	

14 Technical data

- GSM: Quad Band EGSM 850/900/1800/1900 MHz
Compatible with ETSI GSM Phase 2+ Standard
- Output power:
Class 4 (2W @ 850/900 MHz)
Class 1 (1W @ 1800/1900 MHz)
- Temperature range: -30°C - +75°C
- Weight approx. 220 grams
- Dimensions: 150x65x45 mm (l x w x h)
- Supply voltage: 7-32V
- Idle current: 34mA, peak up to 1A
- Max. output current: 2A
Max. output voltage: 30V AC
- Input voltage (digital inputs)
logic 1 (threshold >7V): max 32V
logic 0 (threshold <1,5V): min 0V
- Input voltage (analog inputs)
Max (32V)
Min (0V)

In case of technical problems or questions concerning the STD35 our hotline is available for you:

- Monday – Friday: 9 am – 12am and 1pm – 5pm
- Technical Hotline: +49 (0)89 /45 02 92-11
- Email-Support: support@cepag.de

For all other questions please call:

Sales: +49 (0) 89 / 450292-0

15 Document history

Revision	Datum	Changes
Rev. 1.0	16 th Dec 2010	Original file
Rev.1.1	14 th Jan 2011	Update
Rev 1.2	23 rd Jan 2011	Added Configuration Tool
Rev 1.3	6 th June 2011	Minor Corrections
Rev 1.4	9 th June 2011	Corrected relay voltage mistake
Rev 1.5	10 th December 2013	Change from Telic to CEP, Complete Update

Imprint

These operating instructions are published by CEP AG

No reproduction (including translation) is permitted in whole or part e.g. photocopy, microfilming or storage in electronic data processing equipment, without the express written consent of the publisher.

The operating instructions reflect the current technical specifications at time of print.

We reserve the right to change the technical or physical specifications.

© Copyright 2013 by CEP AG

CEP AG

Raiffeisenallee 12b

D-82041 Oberhaching

Germany

www.cepag.de

CEP reserves the right to change, correct and/or improve the content any time and without prior notice without being obliged to do so. No responsibility is taken for the correctness of the information.