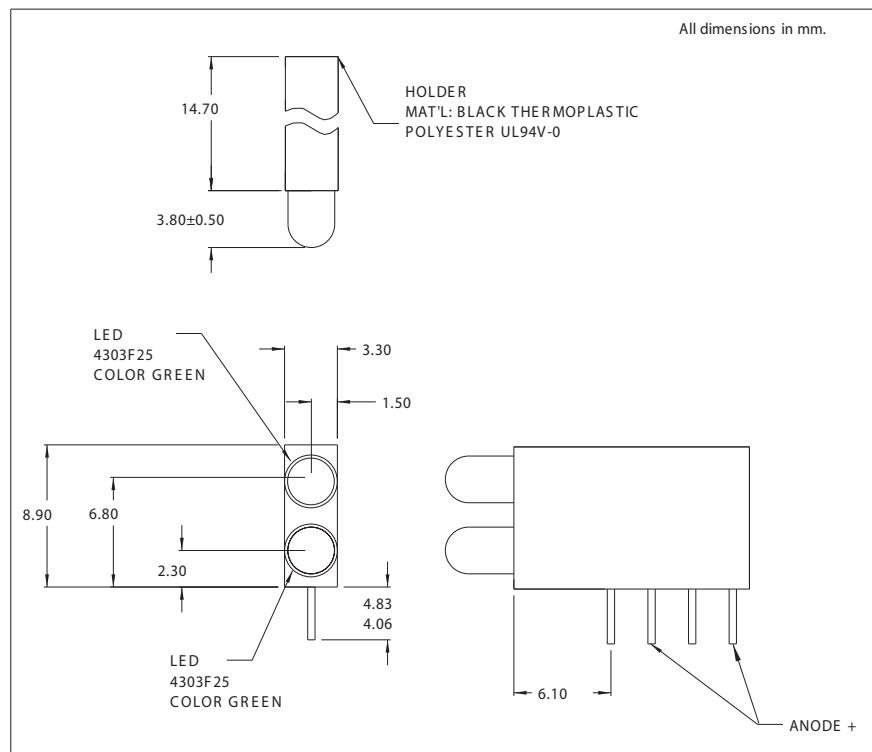




5682F Series Dual Mount T-1 LED Assembly

DESCRIPTION AND FEATURES



Features:

- 2 T-1 LEDs mounted in single block saves space and assembly time.
- High density only 0.13 wide.
- Black plastic mounting block for high contrast ratio.
- Meets UL 94V-O and Bellcore flammability specifications.

Available options:

- Low current, 5V and 12V built-in resistors.
- Bi-color and blue LEDs also offered.
- Call factory for ordering information.
- Mounting hole pattern on page 1-X3.

Ordering Information: Use chart below to determine model number.

| | Red | Amber | Green | Yellow |
|-----|-----|-------|-------|--------|
| LED | 1 | 3 | 5 | 7 |

Model No. is as follows: 5682F ;
Top LED Bottom LED

Example: To order red LED on top and green LED on bottom, the part number would be 5682F 1;5.

ELECTRO-OPTICAL CHARACTERISTICS AND RATINGS

| Part Number | Emitted Color | Rated Current (mA) | Typ. Intensity (mcd) | Continuous Forward Current Max. (mA) | Forward Voltage | | Reverse Breakdown Voltage Min.(V) | Peak Wavelength (nm) |
|-------------|---------------|--------------------|----------------------|--------------------------------------|-----------------|----------|-----------------------------------|----------------------|
| | | | | | Typ. (V) | Max. (V) | | |
| 5682F1 | Red | 10 | 10.0 | 25 | 2.2 | 3.0 | 5.0 | 635 |
| 5682F3 | Amber | 10 | 6.5 | 25 | 2.2 | 3.0 | 5.0 | 602 |
| 5682F5 | Green | 10 | 8.5 | 25 | 2.3 | 3.0 | 5.0 | 565 |
| 5682F7 | Yellow | 10 | 10.0 | 20 | 2.2 | 3.0 | 5.0 | 583 |