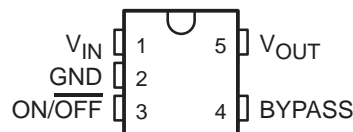


LP2985LV 150-mA LOW-NOISE, LOW-DROPOUT REGULATOR WITH SHUTDOWN FOR OUTPUT VOLTAGES <2.3 V

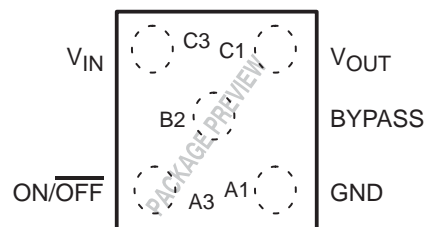
SLVS552 – OCTOBER 2004

- Available in the Texas Instruments NanoStar™ and NanoFree™ Wafer Chip Scale Packages
- Output Tolerance of:
 - 1% (A Grade)
 - 1.5% (Standard Grade)
- Ultra Low Dropout, Typically 280 mV at Full Load of 150 mA
- Wide V_{IN} Range . . . 16 V (Max)
- Low I_Q . . . 850 μ A at Full Load at 150 mA
- Shutdown Current . . . 0.01 μ A Typ
- Low Noise . . . 30 μ V_{RMS} With 10-nF Bypass Capacitor
- Stable With Low ESR Capacitors, Including Ceramic
- Over-Current and Thermal Protection
- High Peak Current Capability
- For V_{OUT} Options ≥ 2.5 V, See LP2985 Data Sheet
- Portable Applications
 - Cellular Phones
 - Palmtop and Laptop Computers
 - Personal Digital Assistants (PDAs)
 - Digital Cameras and Camcorders
 - CD Players
 - MP3 Players

DBV (SOT-23) PACKAGE
(TOP VIEW)



YEQ, YEU, YZQ, OR YZU (WCSP) PACKAGE
(TOP VIEW)



description/ordering information

The LP2985LV family of fixed-output, low-dropout regulators offers exceptional, cost-effective performance for both portable and nonportable applications. Available in voltages of 1.25 V, 1.35 V, 1.5 V, 1.7 V, 1.8 V, and 2 V, the family has an output tolerance of 1% for the A version (1.5% for the non-A version), and is capable of delivering 150-mA continuous load current. Standard regulator features, such as over-current and over-temperature protection, are included.

The LP2985LV has a host of features that makes the regulator an ideal candidate for a variety of portable applications:

- Low dropout: A PNP pass element allows a typical dropout of 280 mV at 150-mA load current.
- Low quiescent current: The use of a vertical PNP process allows for quiescent currents that are considerably lower than those associated with traditional lateral PNP regulators.
- Shutdown: A shutdown feature is available, allowing the regulator to consume only 0.01 μ A when the ON/OFF pin is pulled low.
- Low-ESR-capacitor friendly: The regulator is stable with low ESR capacitors, allowing for the use of small, inexpensive ceramic capacitors in cost-sensitive applications.



Please be aware that an important notice concerning availability, standard warranty, and use in critical applications of Texas Instruments semiconductor products and disclaimers thereto appears at the end of this data sheet.

NanoStar and NanoFree are trademarks of Texas Instruments.

PRODUCTION DATA information is current as of publication date. Products conform to specifications per the terms of Texas Instruments standard warranty. Production processing does not necessarily include testing of all parameters.



POST OFFICE BOX 655303 • DALLAS, TEXAS 75265

Copyright © 2004, Texas Instruments Incorporated

LP2985LV
150-mA LOW-NOISE, LOW-DROPOUT REGULATOR
WITH SHUTDOWN FOR OUTPUT VOLTAGES <2.3 V

SLVS552 – OCTOBER 2004

description/ordering information (continued)

- Low noise: The BYPASS pin allows for low noise operation, with a typical output noise of 30 μ V (RMS) with the use of a 10-nF bypass capacitor.
- Small packaging: For the most space-constraint needs, the regulator is available in SOT-23 package, as well as NanoStar™ wafer chip scale packaging, offering an even smaller size with improved thermal and electrical characteristics. NanoStar package technology is a major breakthrough in IC packaging concepts, using the die as the package.



POST OFFICE BOX 655303 • DALLAS, TEXAS 75265

LP2985LV
150-mA LOW-NOISE, LOW-DROPOUT REGULATOR
WITH SHUTDOWN FOR OUTPUT VOLTAGES <2.3 V

SLVS552 – OCTOBER 2004

ORDERING INFORMATION

T _J	PART GRADE	V _{OUT} (NOM)	PACKAGE†		ORDERABLE PART NUMBER	TOP-SIDE MARKING‡
–40°C to 125°C	A grade: 1% tolerance	1.25 V	SOT23-5 (DBV)	Reel of 3000	LP2985A-12DBVR	PREVIEW
				Reel of 250	LP2985A-12DBVT	
		1.35 V		Reel of 3000	LP2985A-13DBVR	PREVIEW
				Reel of 250	LP2985A-13DBVT	
		1.5 V		Reel of 3000	LP2985A-15DBVR	PREVIEW
				Reel of 250	LP2985A-15DBVT	
		1.7 V		Reel of 3000	LP2985A-17DBVR	PREVIEW
				Reel of 250	LP2985A-17DBVT	
		1.8 V		Reel of 3000	LP2985A-18DBVR	LPT_
				Reel of 250	LP2985A-18DBVT	
		2 V		Reel of 3000	LP2985A-20DBVR	PREVIEW
				Reel of 250	LP2985A-20DBVT	
		1.25 V	NanoStar™ – WCSP 0.17-mm Bump (YEQ)	Reel of 3000	LP2985A-12YEQR	PREVIEW
		1.35 V			LP2985A-13YEQR	PREVIEW
		1.5 V			LP2985A-15YEQR	PREVIEW
		1.7 V			LP2985A-17YEQR	PREVIEW
		1.8 V			LP2985A-18YEQR	PREVIEW
		2 V			LP2985A-20YEQR	PREVIEW
		1.25 V	NanoFree™ – WCSP 0.17-mm Bump (YZQ, Pb-free)	Reel of 3000	LP2985A-12YZQR	PREVIEW
		1.35 V			LP2985A-13YZQR	PREVIEW
		1.5 V			LP2985A-15YZQR	PREVIEW
		1.7 V			LP2985A-17YZQR	PREVIEW
		1.8 V			LP2985A-18YZQR	PREVIEW
		2 V			LP2985A-20YZQR	PREVIEW
		1.25 V	NanoStar™ – WCSP 0.30-mm Bump (YEU)	Reel of 3000	LP2985A-12YEUR	PREVIEW
		1.35 V			LP2985A-13YEUR	PREVIEW
		1.5 V			LP2985A-15YEUR	PREVIEW
		1.7 V			LP2985A-17YEUR	PREVIEW
		1.8 V			LP2985A-18YEUR	PREVIEW
		2 V			LP2985A-20YEUR	PREVIEW
		1.25 V	NanoFree™ – WCSP 0.30-mm Bump (YZU, Pb-free)	Reel of 3000	LP2985A-12YZUR	PREVIEW
		1.35 V			LP2985A-13YZUR	PREVIEW
		1.5 V			LP2985A-15YZUR	PREVIEW
		1.7 V			LP2985A-17YZUR	PREVIEW
		1.8 V			LP2985A-18YZUR	PREVIEW
		2 V			LP2985A-20YZUR	PREVIEW

† Package drawings, standard packing quantities, thermal data, symbolization, and PCB design guidelines are available at www.ti.com/sc/package.

‡ DBV: The actual top-side marking has one additional character that designates the assembly/test site.

YEQ/YZQ, YEU/YZU: The actual top-side marking has three preceding characters to denote year, month, and sequence code, and one following character to designate the assembly/test site. Pin 1 identifier indicates solder-bump composition (1 = SnPb, • = Pb-free).



LP2985LV
150-mA LOW-NOISE, LOW-DROPOUT REGULATOR
WITH SHUTDOWN FOR OUTPUT VOLTAGES <2.3 V

SLVS552 – OCTOBER 2004

description/ordering information (continued)

ORDERING INFORMATION

T _J	PART GRADE	V _{OUT} (NOM)	PACKAGE†		ORDERABLE PART NUMBER	TOP-SIDE MARKING‡
–40°C to 125°C	Standard grade: 1.5% tolerance	1.25 V	SOT-23 (DBV)	Reel of 3000	LP2985-12DBVR	PREVIEW
				Reel of 250	LP2985-12DBVT	
		1.35 V		Reel of 3000	LP2985-13DBVR	PREVIEW
				Reel of 250	LP2985-13DBVT	
		1.5 V		Reel of 3000	LP2985-15DBVR	PREVIEW
				Reel of 250	LP2985-15DBVT	
		1.7 V		Reel of 3000	LP2985-17DBVR	PREVIEW
				Reel of 250	LP2985-17DBVT	
		1.8 V		Reel of 3000	LP2985-18DBVR	LPH_
				Reel of 250	LP2985-18DBVT	
		2 V		Reel of 3000	LP2985-20DBVR	PREVIEW
				Reel of 250	LP2985-20DBVT	
		1.25 V	NanoStar™ – WCSP 0.17-mm Bump (YEQ)	Reel of 3000	LP2985-12YEQR	PREVIEW
		1.35 V			LP2985-13YEQR	PREVIEW
		1.5 V			LP2985-15YEQR	PREVIEW
		1.7 V			LP2985-17YEQR	PREVIEW
		1.8 V			LP2985-18YEQR	PREVIEW
		2 V			LP2985-20YEQR	PREVIEW
		1.25 V	NanoFree™ – WCSP 0.17-mm Bump (YZQ, Pb free)	Reel of 3000	LP2985-12YZQR	PREVIEW
		1.35 V			LP2985-13YZQR	PREVIEW
		1.5 V			LP2985-15YZQR	PREVIEW
		1.7 V			LP2985-17YZQR	PREVIEW
		1.8 V			LP2985-18YZQR	PREVIEW
		2 V			LP2985-20YZQR	PREVIEW
		1.25 V	NanoStar™ – WCSP 0.30-mm Bump (YEU)	Reel of 3000	LP2985-12YEUR	PREVIEW
		1.35 V			LP2985-13YEUR	PREVIEW
		1.5 V			LP2985-15YEUR	PREVIEW
		1.7 V			LP2985-17YEUR	PREVIEW
		1.8 V			LP2985-18YEUR	PREVIEW
		2 V			LP2985-20YEUR	PREVIEW
		1.25 V	NanoFree™ – WCSP 0.30-mm Bump (YZQ, Pb free)	Reel of 3000	LP2985-12YZUR	PREVIEW
		1.35 V			LP2985-13YZUR	PREVIEW
		1.5 V			LP2985-15YZUR	PREVIEW
		1.7 V			LP2985-17YZUR	PREVIEW
		1.8 V			LP2985-18YZUR	PREVIEW
		2 V			LP2985-20YZUR	PREVIEW

† Package drawings, standard packing quantities, thermal data, symbolization, and PCB design guidelines are available at www.ti.com/sc/package.

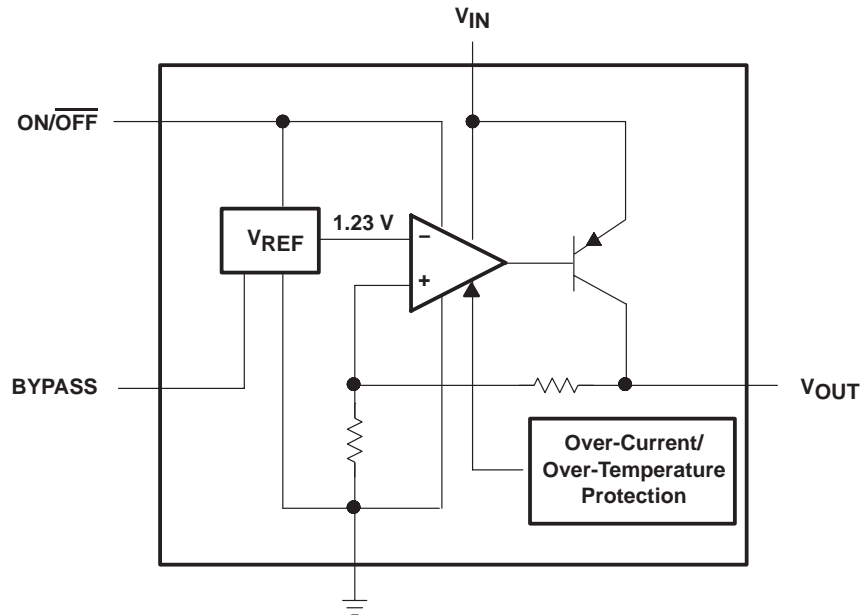
‡ DBV: The actual top-side marking has one additional character that designates the assembly/test site.

YEQ/YZQ, YEU/YZU: The actual top-side marking has three preceding characters to denote year, month, and sequence code, and one following character to designate the assembly/test site. Pin 1 identifier indicates solder-bump composition (1 = SnPb, • = Pb-free).

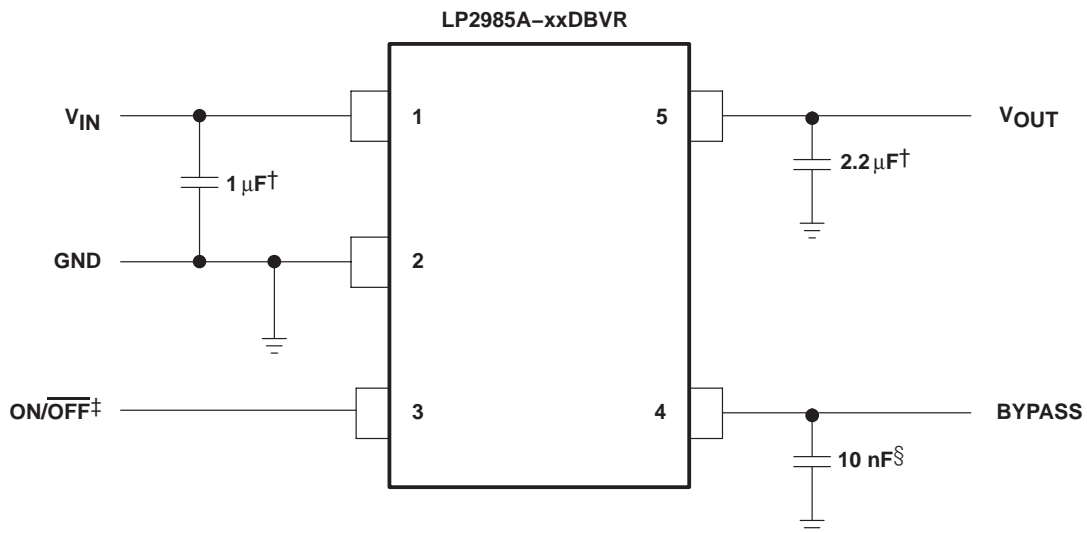


POST OFFICE BOX 655303 • DALLAS, TEXAS 75265

functional block diagram



basic application circuit



† Minimum C_{OUT} value for stability (can be increased without limit for improved stability and transient response)

‡ ON/OFF must be actively terminated. Connect to V_{IN} if shutdown feature is not used.

§ Optional BYPASS capacitor for low noise operation

LP2985LV

150-mA LOW-NOISE, LOW-DROPOUT REGULATOR WITH SHUTDOWN FOR OUTPUT VOLTAGES <2.3 V

SLVS552 – OCTOBER 2004

absolute maximum ratings over the virtual junction temperature range (unless otherwise noted)[†]

Continuous input voltage range	–0.3 V to 16 V
ON/OFF input voltage range	–0.3 V to 16 V
Output voltage range (see Note 1)	–0.3 V to 9 V
Input/output voltage differential, $V_{IN}-V_{OUT}$ (see Note 2)	–0.3 V to 16 V
Output current, I_O (see Note 3)	Internally limited (short-circuit protected)
Package thermal impedance, θ_{JA} (see Notes 3 and 4): DBV package	206°C/W
YEQ/YZQ package	TBD°C/W
YEU/YZU package	TBD°C/W
Operating virtual junction temperature	150°C
Storage temperature range, T_{stg}	–65°C to 150°C

[†] Stresses beyond those listed under “absolute maximum ratings” may cause permanent damage to the device. These are stress ratings only, and functional operation of the device at these or any other conditions beyond those indicated under “recommended operating conditions” is not implied. Exposure to absolute-maximum-rated conditions for extended periods may affect device reliability.

- NOTES:
1. If load is returned to a negative power supply in a dual supply system, the output must be diode clamped to GND.
 2. The PNP pass transistor has a parasitic diode connected between the input and output. This diode is normally reversed bias ($V_{IN} > V_{OUT}$) but will be forward biased if the output voltage exceeds the input voltage by a diode drop (see Application Information for more details).
 3. Maximum power dissipation is a function of $T_J(\text{max})$, θ_{JA} , and T_A . The maximum allowable power dissipation at any allowable ambient temperature is $P_D = (T_J(\text{max}) - T_A)/\theta_{JA}$. Operating at the absolute maximum T_J of 150°C can affect reliability.
 4. The package thermal impedance is calculated in accordance with JESD 51-7.

recommended operating conditions

		MIN	MAX	UNIT
V_{IN}	Supply input voltage	2.2	16	V
$V_{ON/OFF}$	ON/OFF input voltage	–0.3	V_{IN}	V
I_{OUT}	Output current		150	mA
T_J	Virtual junction temperature	–40	125	°C



LP2985LV
150-mA LOW-NOISE, LOW-DROPOUT REGULATOR
WITH SHUTDOWN FOR OUTPUT VOLTAGES <2.3 V

SLVS552 – OCTOBER 2004

electrical characteristics at specified virtual junction temperature range,
 $V_{IN} = V_{OUT}(\text{nominal}) + 1\text{ V}$, $V_{ON/OFF} = 2\text{ V}$, $C_{IN} = 1\text{ }\mu\text{F}$, $I_L = 1\text{ mA}$, $C_{OUT} = 4.7\text{ }\mu\text{F}$ (unless otherwise noted)

PARAMETER	TEST CONDITIONS	T _J	LP2985A–XX			LP2985–XX			UNIT
			MIN	TYP	MAX	MIN	TYP	MAX	
ΔV _{OUT} Output voltage tolerance	I _L = 1 mA	25°C	–1		1	–1.5		1.5	%V _{NOM}
	1 mA ≤ I _L ≤ 50 mA	25°C	–1.5		1.5	–2.5		2.5	
		–40°C to 125°C	–2.5		2.5	–3.5		3.5	
	1 mA ≤ I _L ≤ 150 mA	25°C	–2.5		2.5	–3.0		3.0	
		–40°C to 125°C	–3.5		3.5	–4.0		4.0	
Line regulation	V _{IN} = [V _{OUT} (NOM) + 1 V] to 16 V	25°C	0.007	0.014		0.007	0.014	%V	
		–40°C to 125°C		0.032			0.032		
V _{IN} (MIN) Minimum V _{IN} to maintain output regulation (see Note 5)		25°C	2.05			2.05			V
		–40°C to 125°C	2.2			2.2			
V _{IN} –V _{OUT} Dropout voltage (see Note 5)	I _L = 50 mA	25°C	120	150		120	150	mV	
		–40°C to 125°C	250			250			
	I _L = 150 mA	25°C	280	350		280	350		
		–40°C to 125°C	600			600			
I _{GND} Ground pin current	I _L = 0	25°C	65	95		65	95	μA	
		–40°C to 125°C	125			125			
	I _L = 1 mA	25°C	75	110		75	110		
		–40°C to 125°C	170			170			
	I _L = 10 mA	25°C	120	220		120	220		
		–40°C to 125°C	400			400			
	I _L = 50 mA	25°C	350	600		350	600		
		–40°C to 125°C	1000			1000			
	I _L = 150 mA	25°C	850	1500		850	1500		
		–40°C to 125°C	2500			2500			
V _{ON/OFF} ON/OFF input voltage (see Note 6)	V _{ON/OFF} = HIGH → (ON)	25°C	1.4			1.4			V
		–40°C to 125°C	1.6			1.6			
	V _{ON/OFF} = LOW → (OFF)	25°C	0.55			0.55			
–40°C to 125°C		0.15			0.15				
I _{ON/OFF} ON/OFF input current	V _{ON/OFF} = 0	25°C	0.01			0.01			μA
		–40°C to 125°C	–2			–2			
	V _{ON/OFF} = 5 V	25°C	5			5			
		–40°C to 125°C	15			15			

- NOTES: 5. Dropout voltage is defined as the input-to-output differential at which the output voltage drops 2% below the value measured with a 1-V differential. Dropout limits may not apply because V_{IN} must be the greater of a) 2.2 V, or b) $V_{OUT}(\text{nom})$ + dropout voltage (Max) in order to maintain output regulation.
6. The ON/OFF input must be properly driven for reliable operation (see Application Information).

LP2985LV
150-mA LOW-NOISE, LOW-DROPOUT REGULATOR
WITH SHUTDOWN FOR OUTPUT VOLTAGES <2.3 V

SLVS552 – OCTOBER 2004

electrical characteristics at specified virtual junction temperature range,
 $V_{IN} = V_{OUT}(\text{nominal}) + 1\text{ V}$, $V_{ON/OFF} = 2\text{ V}$, $C_{IN} = 1\text{ }\mu\text{F}$, $I_L = 1\text{ mA}$, $C_{OUT} = 4.7\text{ }\mu\text{F}$ (unless otherwise noted)
 (continued)

PARAMETER	TEST CONDITIONS	T_J	LP2985A-XX			LP2985-XX			UNIT
			MIN	TYP	MAX	MIN	TYP	MAX	
V_n Output noise (RMS)	BW = 300 Hz to 50 kHz, $C_{OUT} = 10\text{ }\mu\text{F}$, $C_{BYPASS} = 10\text{ nF}$, $V_{OUT} = 1.8\text{ V}$	25°C		30			30		μV
$\Delta V_{OUT}/\Delta V_{IN}$ Ripple rejection	$f = 1\text{ kHz}$, $C_{OUT} = 10\text{ }\mu\text{F}$, $C_{BYPASS} = 10\text{ nF}$	25°C		45			45		dB
$I_{OUT(PK)}$ Peak output current	$V_{OUT} \geq V_{O(NOM)} - 5\%$	25°C		350			350		mA
$I_{OUT(SC)}$ Short circuit current	$R_L = 0$ (steady state) (see Note 7)	25°C		400			400		mA

NOTE 7: See Typical Characteristics Curve, Short-Circuit Current vs. V_{OUT}

APPLICATION INFORMATION

capacitors

input capacitor (C_{IN})

A minimum value of 1 μF (over the entire operating temperature range) is required at the input of the LP2985LV. In addition, this input capacitor should be located within 1 cm of the input pin and connected to a clean analog ground. There are no Equivalent Series Resistance (ESR) requirements for this capacitor and the capacitance can be increased without limit.

output capacitor (C_{OUT})

As an advantage over other regulators, the LP2985LV permits the use of low ESR capacitors at the output, including ceramic capacitors that can have an ESR as low as 5 m Ω . Of course, tantalum and film capacitors can also be used if size and cost are not issues. The output capacitor should also be located within 1 cm of the output pin and be returned to a clean analog ground.

As with other PNP LDOs, stability conditions require the output capacitor to have a minimum capacitance and an ESR that falls within a certain range.

Minimum C_{OUT} : 2.2 μF (can be increased without limit to improve transient response stability margin)

ESR range: See Figures 1 and 2

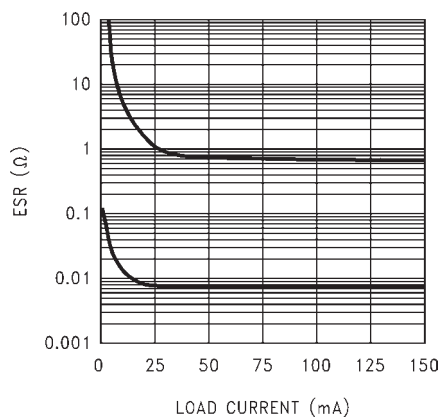


Figure 1. 2.2- μF Stable ESR Curves

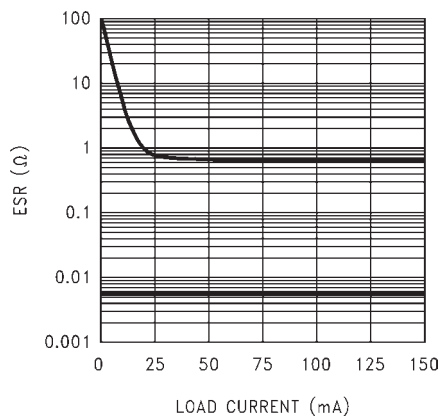


Figure 2. 4.7- μF Stable ESR Curves

LP2985LV

150-mA LOW-NOISE, LOW-DROPOUT REGULATOR WITH SHUTDOWN FOR OUTPUT VOLTAGES <2.3 V

SLVS552 – OCTOBER 2004

APPLICATION INFORMATION

output capacitor (C_{OUT}) (continued)

It is critical that both the minimum capacitance and ESR requirement be met *over the entire operating temperature range*. Depending on the type of capacitors used, both these parameters can vary significantly with temperature (see Capacitor Characteristics section).

noise bypass capacitor (C_{BYPASS})

The LP2985LV allows for low noise performance with the use of a bypass capacitor that is connected to the internal band-gap reference via the BYPASS pin. This high-impedance band-gap circuitry is biased in the microampere range and, thus, cannot be loaded significantly, else its output – and correspondingly the output of the regulator – will change. Thus, for best output accuracy, dc leakage current through C_{BYPASS} should be minimized as much as possible and should never exceed 100 nA.

A 10-nF capacitor is recommended for C_{BYPASS} ; ceramic and film capacitors are well suited for this purpose.

capacitor characteristics

ceramic

Ceramic capacitors are ideal choices for use on the output of the LP2985LV for several reasons. For capacitances in the range of 2.2 μF to 4.7 μF , ceramic capacitors have the lowest cost and the lowest ESR, making them choice candidates for filtering high-frequency noise. For instance, a typical 2.2- μF ceramic capacitor has an ESR in the range of 10 m Ω to 20 m Ω and satisfies minimum ESR requirements of the regulator.

Ceramic capacitors have one glaring disadvantage that must be taken into account – a poor temperature coefficient, where the capacitance can vary significantly with temperature. For instance, a large-value ceramic capacitor ($\geq 2.2 \mu\text{F}$) can lose more than half of its capacitance as temperature rises from 25°C to 85°C. Thus, a 2.2 μF at 25°C will drop well below the minimum C_{OUT} required for stability as ambient temperature rises. For this reason, select an output capacitor that maintains the minimum 2.2 μF required for stability over the *entire operating temperature range*. Note that there are some ceramic capacitors that can maintain a $\pm 15\%$ capacitance tolerance over temperature.

tantalum

Tantalum capacitors can be used at the output of the LP2985LV, but there are significant disadvantages that could prohibit their use.

- In the 1- μF to 4.7- μF range, tantalum capacitors are more expensive than ceramics of the equivalent capacitance and voltage ratings.
- Tantalum capacitors have higher ESRs than their equivalent-sized ceramic counterparts. Thus, to meet the ESR requirements, a higher-capacitance tantalum may be required, at the expense of larger size and higher cost.
- The ESR of a tantalum capacitor increases as temperature drops, as much as double from 25°C to –40°C. Thus, ESR margins must be maintained over the temperature range in order to prevent regulator instability.

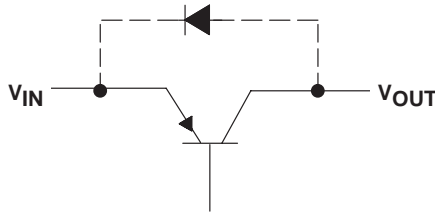
APPLICATION INFORMATION

ON/OFF operation

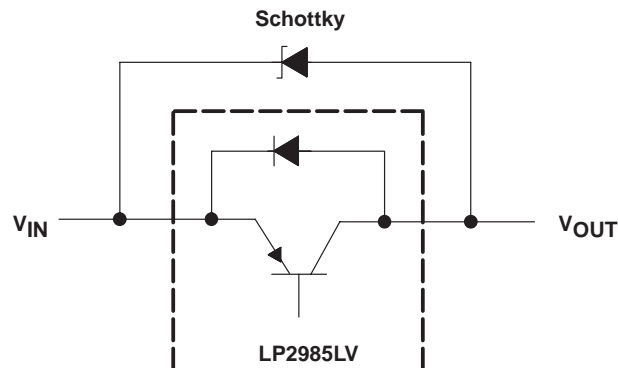
The LP2985LV allows for a shutdown mode via the ON/OFF pin. Driving the pin LOW (≤ 0.3 V) turns the device OFF, conversely, a HIGH (≥ 1.6 V) turns the device ON. If the shutdown feature is not used, the ON/OFF pin should be connected to the input to ensure that the regulator is on at all times. For proper operation, do not leave the ON/OFF pin unconnected and apply a signal with a slew rate of ≥ 40 mV/ μ s.

reverse input-output voltage

There is an inherent diode present across the PNP pass element of the LP2985LV.



With the anode connected to the output, this diode is reverse biased during normal operation since the input voltage is higher than the output. However, if the output is pulled higher than the input for any reason, this diode will be forward biased and can cause a parasitic silicon-controlled rectifier (SCR) to latch, resulting in high current flowing from the output to the input. Thus, to prevent possible damage to the regulator in any application where the output may be pulled above the input, an external Schottky diode must be connected between the output and input. With the anode on output, this Schottky limits the reverse voltage across the output and input pins to ~ 0.3 V, preventing the regulator's internal diode from forward biasing.

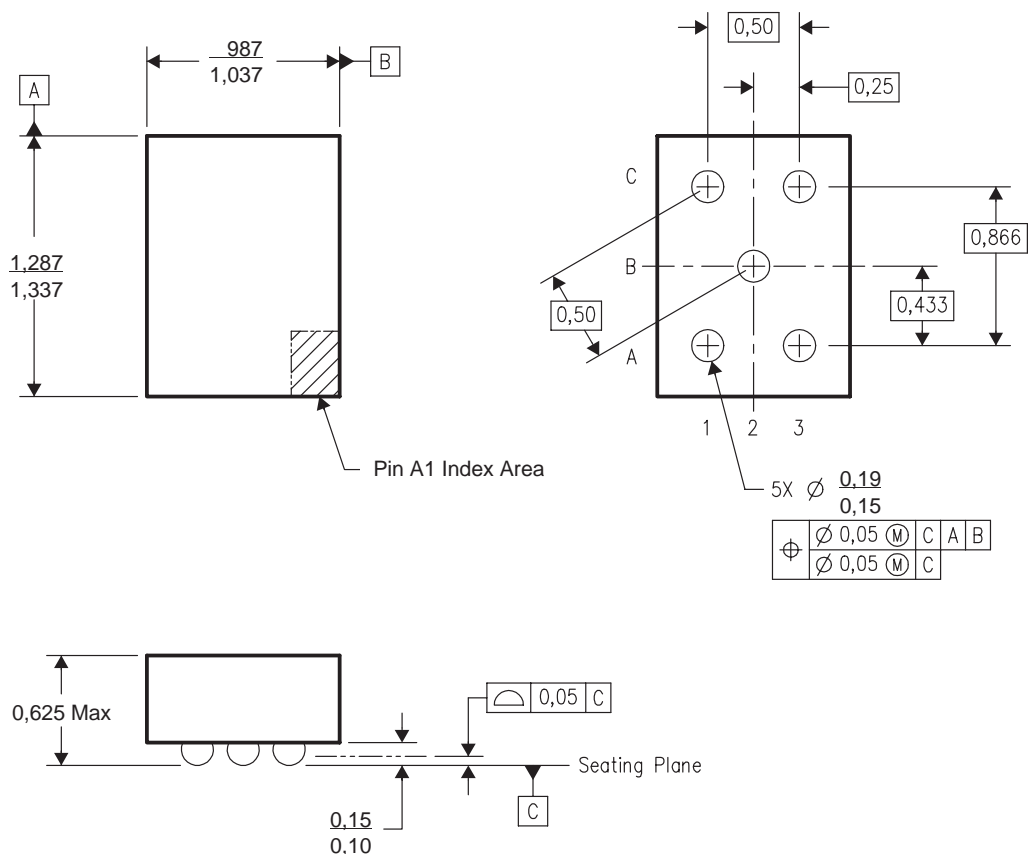


LP2985LV
150-mA LOW-NOISE, LOW-DROPOUT REGULATOR
WITH SHUTDOWN FOR OUTPUT VOLTAGES <2.3 V

SLVS552 – OCTOBER 2004

WAFER CHIP SCALE INFORMATION

LP2985x-xxYEQ NanoStar (0.17-mm Bump)
LP2985x-xxYZQ NanoFree (0.17-mm Pb-Free Bump)



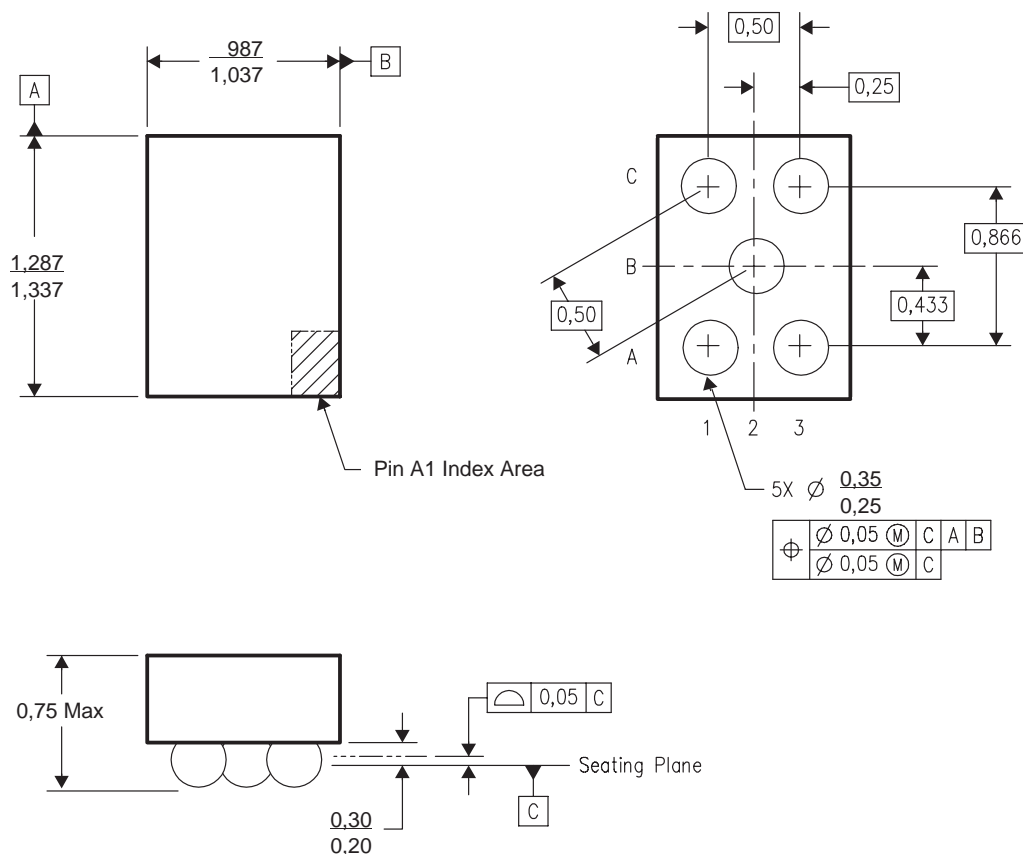
- NOTES:
- A. All linear dimensions are in millimeters.
 - B. This drawing is subject to change without notice.
 - C. NanoStar package configuration
 - D. This package is tin-lead (SnPb), consult the factory for availability of lead-free material.

LP2985LV
150-mA LOW-NOISE, LOW-DROPOUT REGULATOR
WITH SHUTDOWN FOR OUTPUT VOLTAGES <2.3 V

SLVS552 – OCTOBER 2004

WAFER CHIP SCALE INFORMATION

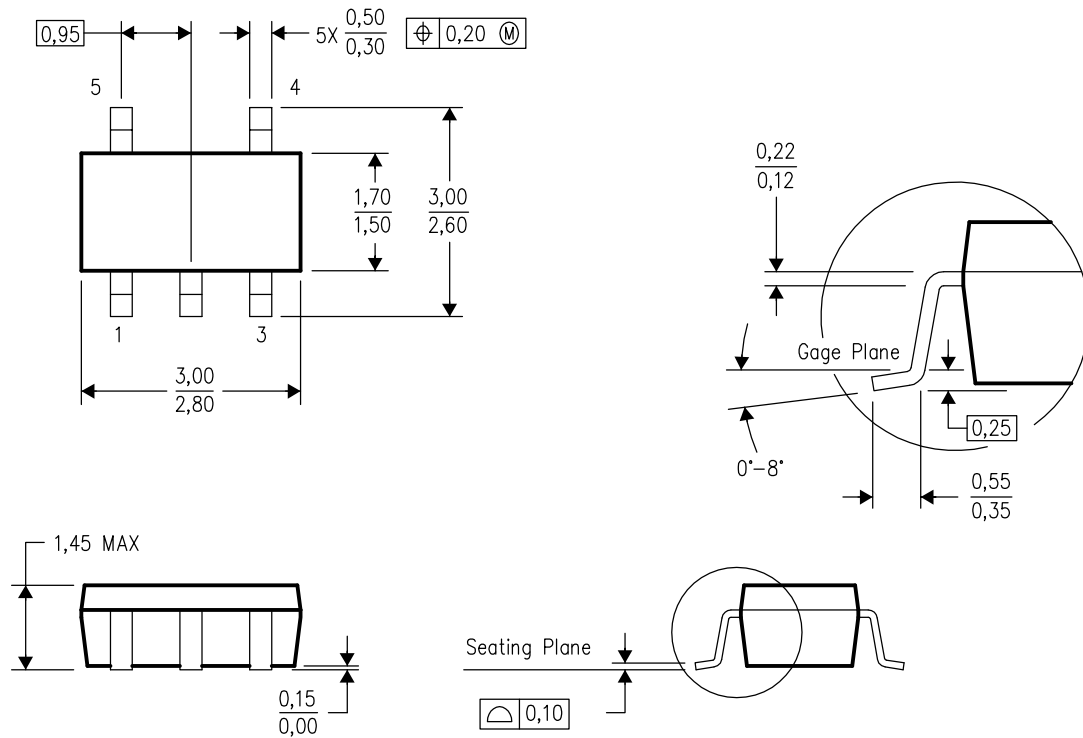
LP2985x-xxYEU NanoStar (0.30-mm Bump)
LP2985x-xxYZU NanoFree (0.30-mm Pb-Free Bump)



- NOTES:
- A. All linear dimensions are in millimeters.
 - B. This drawing is subject to change without notice.
 - C. NanoStar package configuration
 - D. This package is tin-lead (SnPb), consult the factory for availability of lead-free material.

DBV (R-PDSO-G5)

PLASTIC SMALL-OUTLINE PACKAGE



4073253-4/H 10/2003

- NOTES:
- A. All linear dimensions are in millimeters.
 - B. This drawing is subject to change without notice.
 - C. Body dimensions do not include mold flash or protrusion.
 - D. Falls within JEDEC MO-178 Variation AA.

IMPORTANT NOTICE

Texas Instruments Incorporated and its subsidiaries (TI) reserve the right to make corrections, modifications, enhancements, improvements, and other changes to its products and services at any time and to discontinue any product or service without notice. Customers should obtain the latest relevant information before placing orders and should verify that such information is current and complete. All products are sold subject to TI's terms and conditions of sale supplied at the time of order acknowledgment.

TI warrants performance of its hardware products to the specifications applicable at the time of sale in accordance with TI's standard warranty. Testing and other quality control techniques are used to the extent TI deems necessary to support this warranty. Except where mandated by government requirements, testing of all parameters of each product is not necessarily performed.

TI assumes no liability for applications assistance or customer product design. Customers are responsible for their products and applications using TI components. To minimize the risks associated with customer products and applications, customers should provide adequate design and operating safeguards.

TI does not warrant or represent that any license, either express or implied, is granted under any TI patent right, copyright, mask work right, or other TI intellectual property right relating to any combination, machine, or process in which TI products or services are used. Information published by TI regarding third-party products or services does not constitute a license from TI to use such products or services or a warranty or endorsement thereof. Use of such information may require a license from a third party under the patents or other intellectual property of the third party, or a license from TI under the patents or other intellectual property of TI.

Reproduction of information in TI data books or data sheets is permissible only if reproduction is without alteration and is accompanied by all associated warranties, conditions, limitations, and notices. Reproduction of this information with alteration is an unfair and deceptive business practice. TI is not responsible or liable for such altered documentation.

Resale of TI products or services with statements different from or beyond the parameters stated by TI for that product or service voids all express and any implied warranties for the associated TI product or service and is an unfair and deceptive business practice. TI is not responsible or liable for any such statements.

Following are URLs where you can obtain information on other Texas Instruments products and application solutions:

Products		Applications	
Amplifiers	amplifier.ti.com	Audio	www.ti.com/audio
Data Converters	dataconverter.ti.com	Automotive	www.ti.com/automotive
DSP	dsp.ti.com	Broadband	www.ti.com/broadband
Interface	interface.ti.com	Digital Control	www.ti.com/digitalcontrol
Logic	logic.ti.com	Military	www.ti.com/military
Power Mgmt	power.ti.com	Optical Networking	www.ti.com/opticalnetwork
Microcontrollers	microcontroller.ti.com	Security	www.ti.com/security
		Telephony	www.ti.com/telephony
		Video & Imaging	www.ti.com/video
		Wireless	www.ti.com/wireless

Mailing Address: Texas Instruments
Post Office Box 655303 Dallas, Texas 75265

Copyright © 2004, Texas Instruments Incorporated