

Compensated High Inductance Choke, 3-phase



Approvals and Compliances

Description

- Current compensated choke
- 3-phase choke
- THT-terminals
- Flange for mounting onto printed circuit board
- Fully potted resign

Applications

- Placed in front of frequency converter
- Stepper motor drives
- UPS-systems
- Inverter

Weblinks

[pdf datasheet](#), [html-datasheet](#), [General Product Information](#), [Distributor-Stock-Check](#), [Detailed request for product](#)

Technical Data

| | | | |
|---------------------------|-----------------------------|---------------------------|---|
| Rated voltage | up to 540 VAC | Test Voltage | 2.5 kV, 50 Hz, 2 sec, winding to winding |
| | up to 760 VDC | Isolation Voltage | 2.5 kV eff., 50 Hz, 2 sec, winding to ambient |
| Rated Current | 3 - 8 A @ Ta 40 °C | Climatic Category | 25/100/21 acc. to IEC 60068-1 |
| Rated inductance | 4.0 - 50 mH, Tol. -30% +50% | Allowable Operation Temp. | -25 °C to 100 °C |
| Power Operating Frequency | 50 - 400 Hz | | |
| Terminal Type | THT | | |
| Weight | 142 - 501 g | | |
| Material: Housing | UL 94V-0 | | |
| Sealing Compound | UL 94V-0 | | |


Approvals and Compliances

Detailed information on product approvals, code requirements, usage instructions and detailed test conditions can be looked up in [Details about Approvals](#)

Approvals


The approval mark is used by the testing authorities to certify compliance with the safety requirements placed on electronic products.

Approval Reference Type: DKLL

| Approval Logo | Certificates | Certification Body | Description |
|---|------------------------------|--------------------|-----------------|
|  | UL Approvals | UL | UL File Number: |

Application standards

Application standards where the product can be used

| Organization | Design | Standard | Description |
|---|--------------------------------|--------------|---|
|  | Designed for applications acc. | IEC/UL 60950 | IEC 60950-1 includes the basic requirements for the safety of information technology equipment. |

Compliances

The product complies with following Guide Lines

Identification



Details

CE declaration of conformity

Initiator

SCHURTER AG

Description

The CE marking declares that the product complies with the applicable requirements laid down in the harmonisation of Community legislation on its affixing in accordance with EU Regulation 765/2008.



RoHS

SCHURTER AG

EU Directive RoHS 2011/65/EU



China RoHS

SCHURTER AG

The law SJ / T 11363-2006 (China RoHS) has been in force since 1 March 2007. It is similar to the EU directive RoHS.



REACH

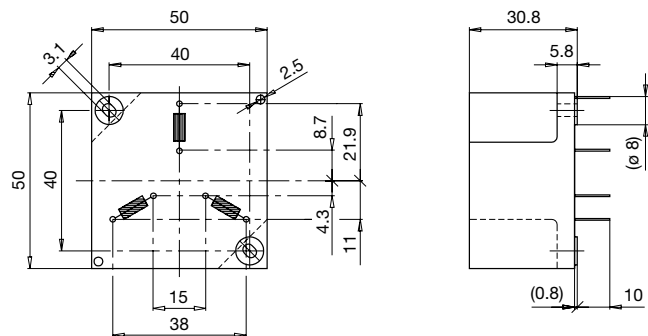
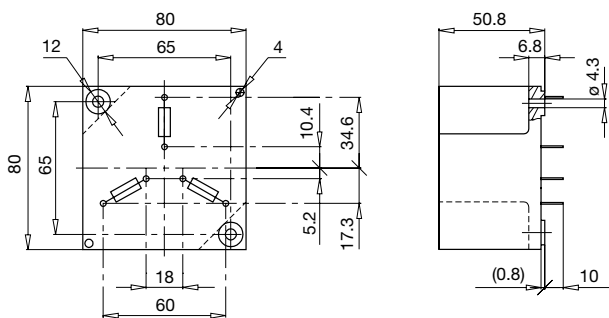
SCHURTER AG

On 1 June 2007, Regulation (EC) No 1907/2006 on the Registration, Evaluation, Authorization and Restriction of Chemicals 1 (abbreviated as "REACH") entered into force.

Dimension [mm]

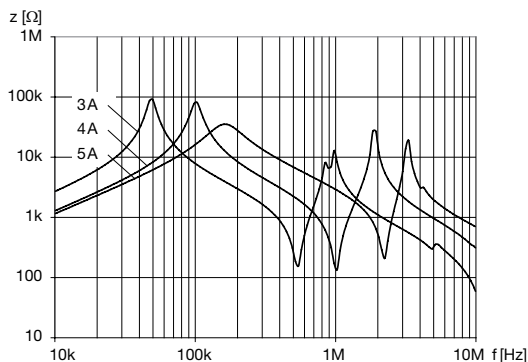
Case 31-3P

Case 46-3P

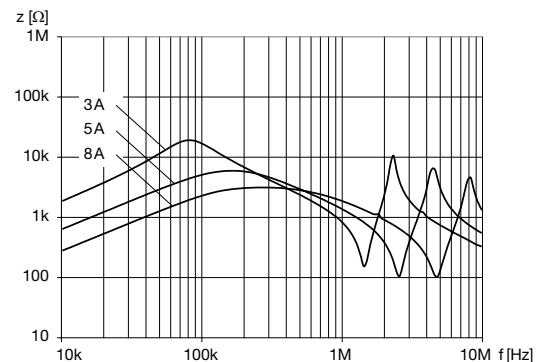


Impedance curves

DKLL-0331-xxxx



DKLL-0346-xxxx



All Variants

| I_n [A] | L_n [mH] | R_{cu} [mΩ] | Power _{loss} [W] | f_{RES} [MHz] | Copper ϕ [mm] | Weight [g] | Housings | Packing unit [pcs.] | Order Number |
|-----------|------------|---------------|---------------------------|-----------------|--------------------|------------|----------|---------------------|--------------------------------|
| 3 | 50 | 260 | 7 | 0.055 | 0.71 | 497 g | 31-3P | 2 | DKLL-0331-0350 |
| 4 | 30 | 155 | 7.5 | 0.075 | 0.8 | 501 g | 31-3P | 2 | DKLL-0331-0430 |
| 5 | 20 | 100 | 7.5 | 0.145 | 0.9 | 500 g | 31-3P | 2 | DKLL-0331-0520 |
| 3 | 30 | 130 | 3.5 | 0.13 | 0.71 | 147 g | 46-3P | 10 | DKLL-0346-0330 |
| 5 | 10 | 48 | 3.6 | 0.15 | 0.9 | 142 g | 46-3P | 10 | DKLL-0346-0510 |
| 8 | 4 | 22 | 4.2 | 0.4 | 1.12 | 147 g | 46-3P | 10 | DKLL-0346-0804 |

Availability for all products can be searched real-time: <https://www.schurter.com/en/Stock-Check/Stock-Check-SCHURTER>