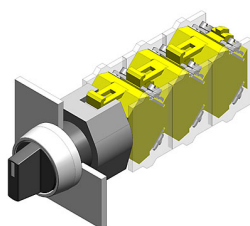


# EAO – Your Expert Partner for Human Machine Interfaces

## 704.403.0i - Selector switch actuator illuminable, 3 positions, short lever

### 704.403.0i - Selector switch actuator illuminable, 3 positions, short lever



*Attention: The preview is based on a sample product. This can differ from your current configuration.*

#### Mounting

Mounting cut-out	Ø 22.5 mm
Design	raised

#### Front

Front dimension	Ø 29 mm
Front shape	round
Front ring material	Aluminium
Front ring colour	natural anodized

#### Other Attributes

Weight	0.037 kg
--------	----------

#### Operating-/Indication part

Lever material	Plastic
Lever colour	black
Switching angle	C = 42° / 42°

#### IP-Rating

Front protection	IP 67
------------------	-------

#### Actuator

Switching action	Maintained - Rest - Maintained
------------------	--------------------------------

#### Switching element

Rotary positions	3
------------------	---

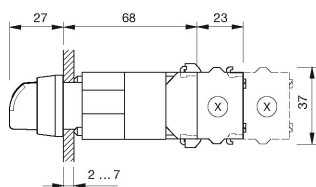
#### Function

Selector switch
-----------------

# EAO – Your Expert Partner for Human Machine Interfaces

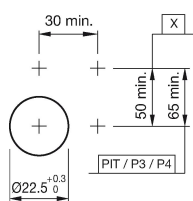
## 704.403.0i - Selector switch actuator illuminable, 3 positions, short lever

### Dimensions



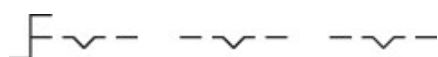
X = Screw terminal

### Mounting cut-outs

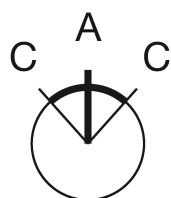


PIT = Push-in terminal

### Wiring diagram



### Switching positions



### Additional information

Max. 3 switching elements can be clipped on  
The colour of anodized aluminium parts can vary due to technical  
production reasons

### Legend

Switching action: A = Rest, C = Maintained