

PRODUCT NUMBER  
57202-XXX-XXXXXLF

PLATING  
S = 0.38µm GOLD/GXT ON CONTACT AREA  
2µm MIN MATTE TIN ON TAIL  
G = 0.76µm GOLD/GXT ON CONTACT AREA  
2µm MIN MATTE TIN ON TAIL  
F = GOLD FLASH ON CONTACT AREA  
2µm MIN MATTE TIN ON TAIL  
T = 2-6.0µm FULL MATTE TIN  
1.27µm MIN NICKEL UNDERPLATING

RoHS COMPATIBLE  
SEE NOTE 7

POLARIZATION, SEE NOTE 6

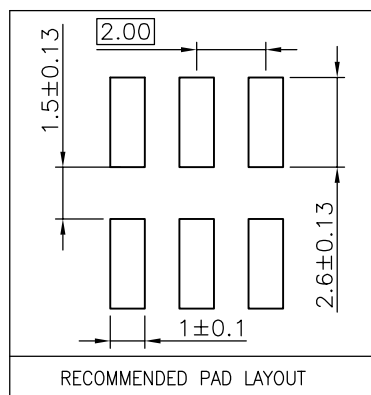
PACKAGING, SEE NOTE 5

NB OF POS PER ROW : 02 TO 25

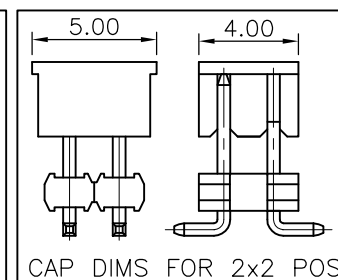
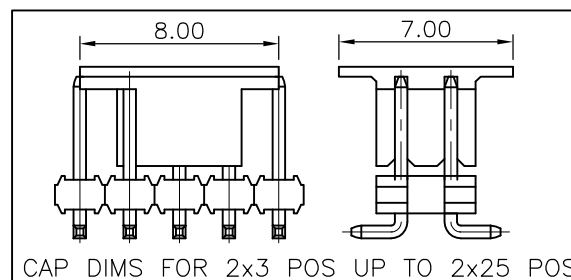
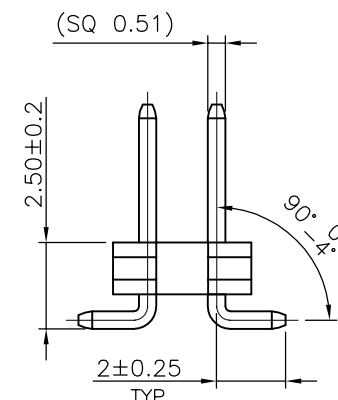
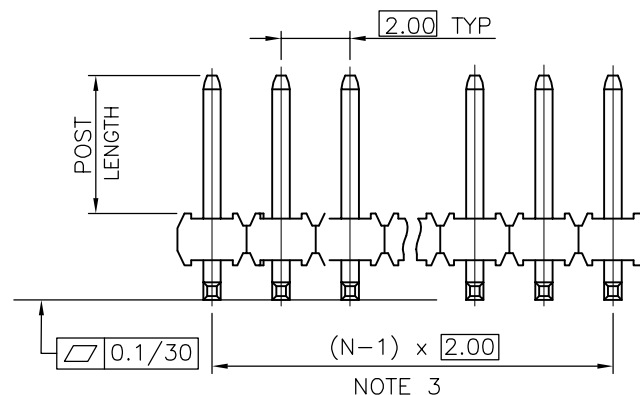
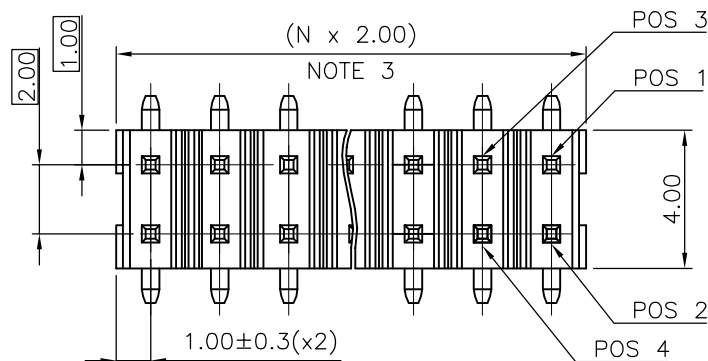
STYLE	POST LENGTH ±0.2
51	2.00
52	4.00
53	3.50
54	2.50

NOTES:

- MATERIAL HOUSING: HIGH TEMP. THERMOPLASTIC  
UL 94V-0, COLOR BLACK
- MATERIAL TERMINAL: COPPER ALLOY
- TO DETERMINE DIMENSIONS:  
N = NUMBER OF POSITIONS PER ROW.
- 7N MIN. PIN RETENTION IN EITHER DIRECTION.
- PACKAGING:
  - = STANDARD PACKAGING IN POLYBAGS
  - = POLYBAGS PACKAGING WHEN POLARISATION FEATURE APPLICABLE.
  - U = TUBE AVAILABLE FROM 04 TO 25 POS PER ROW.
  - A = TAPE AND REEL WITH PICK UP CAP INSTALLED  
IN THE CENTER OF THE PRODUCT FOR PICK AND PLACE  
SEE TA 884 FOR PRODUCT AVAILABILITY.
  - K = TAPE AND REEL WITHOUT CAP, SEE TA884 FOR AVAILABILITY.
- FOR POLARIZATION, SPECIFY POSITION NUMBER TO OMIT PIN.  
EXAMPLE : 03 = OMIT PIN POSITION 3, SEE TOP VIEW.  
OMIT FROM PRODUCT NUMBER IF THIS FEATURE IS NOT APPLICABLE.
- RoHS COMPATIBLE PRODUCT SPECIFICATIONS
  - PLATING:
    - "LF" MEANS THE PRODUCT IS LEAD-FREE,  
2µm MINIMUM MATTE TIN OVER 1.27µm  
MINIMUM NICKEL UNDERPLATE.
  - MANUFACTURING PROCESS COMPATIBILITY
    - THE HOUSING WILL WITHSTAND EXPOSURE TO  
260°C PEAK TEMPERATURE FOR 30 SECONDES  
IN A CONVECTION, INFRA-RED OR VAPOR  
PHASE REFLOW OVEN.
  - LABELLING:
    - MEETS PACKAGING SPECS AS PER GS-14-920
  - LEGAL STATEMENT : SEE GS-47-0004



TOP VIEW



mat'l. code				surface ISO 1302		tolerance ISO 406 ISO 1101		projection mm		product family MINITEK	
ltr ecn no dr date				tolerances unless otherwise specified		.X ±0.3		scale 1:1		title UNSH HEADER	
L F09-0087 JCO 09.09.04				angles		.XX ±0.13				2.00 mm VERTICAL SMT	
M F11-0026 LMU 11.05.12				linear		.XXX ±0.05				dwg no	
N B-19190 LMU 14.10.24										sheet 1 of 1 size	
P B-19797 AMA 14.12.16				dr		L.MULIN 04.05.06				57202	
R B-19988 LMU 15.01.13				engr		J.COMPAGNON 04.11.25				A3	
S B-20032 AMA 15.01.20				chr							
				appd		J.M.C 04.11.25				type	
										CUSTOMER Drawing	
sheet index		revision sheet									