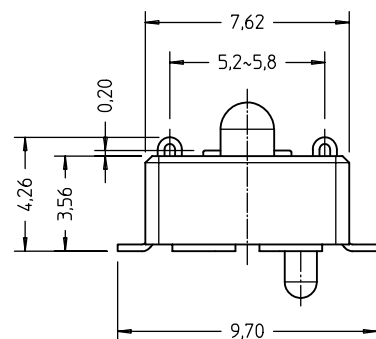
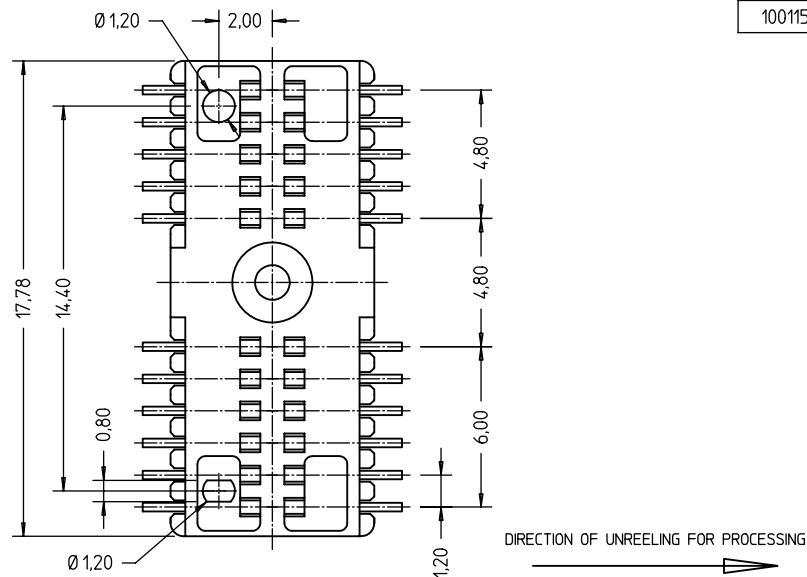
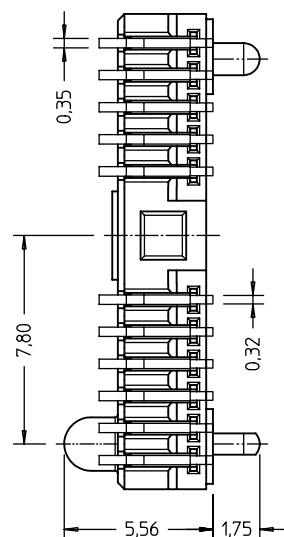
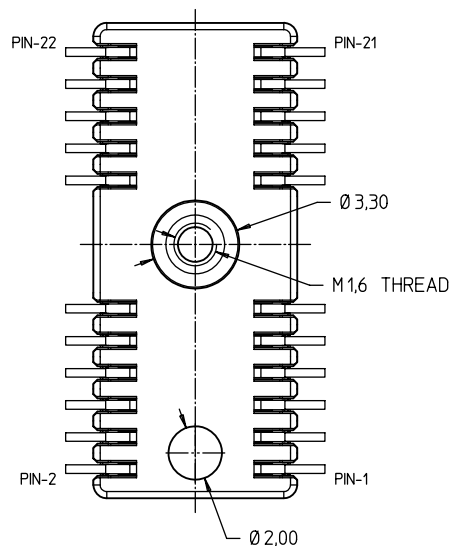
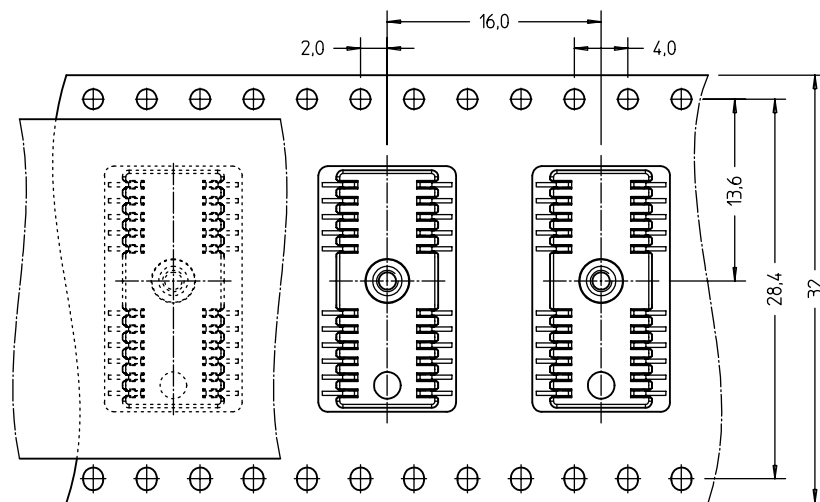


| PRODUCT NO. | EMPTY POSITIONS |
|----------------|-----------------|
| 10011533-007LF | --- |
| 10011533-008LF | 1, 2, 21, 22 |



NOTES :

- MATERIAL :
HOUSING : HIGH TEMPERATURE PLASTIC.
TERMINAL : COPPER ALLOY
PLATING : GOLD FLASH OVER NICKEL PLATING.
- COMPRESSION FORCE : 110gf MIN AT 3,86mm FROM BASE.
- DURABILITY : 15 CYCLES
- THIS CUSTOMIZED PRODUCT IS MANUFACTURED ACCORDING TO THE CUSTOMER'S DRAWING AND SPECIFICATIONS. APPROACH MARKETING FOR ENQUIRIES.
- ALL DIMENSIONS ARE FOR REFERENCE PURPOSE ONLY. DRAWING IS SUBJECTED TO CHANGE WITHOUT NOTICE.
- PACKAGING : TAPE-AND-REEL
- THIS PRODUCT MEETS EUROPEAN UNION DIRECTIVES AND OTHER COUNTRY REGULATIONS AS DESCRIBED IN GS-22-008. THE HOUSING WILL WITHSTAND EXPOSURE TO 260°C PEAK TEMPERATURE FOR 10 SECONDS IN A CONVECTION, INFRA-RED OR VAPOR PHASE REFLOW OVEN.



| | | | | | | | | | |
|-------------|----------------|------|---------|---------------------------------------|-------------------------------|------------------|-----------------------|--------------|------|
| mat'l. code | | | | surface ISO 1302 | tolerance ISO 406 ISO 1101 | projection mm | product family | | |
| ltr | ecn no | dr | date | tolerances unless otherwise specified | | mm | title | | |
| A | S06-0215 | LTS | 23JUN06 | angles | linear | | CONNECTOR, J4 | | |
| | | | | --- | | scale 5 : 1 | | | |
| | | dr | L T Soh | 23JUN06 | | FCI | dwg no | sheet 1 of 1 | size |
| | | enr | L T Soh | 23JUN06 | | | 10011533 | | A3 |
| | | chr | L T Soh | 23JUN06 | | | | | |
| | | appd | JOEY NG | 23JUN06 | | | | | |
| sheet index | revision sheet | | | | | | type CUSTOMER Drawing | | |