

STYLE R

DIM 1 **±3.18**

3.30/130 TYP

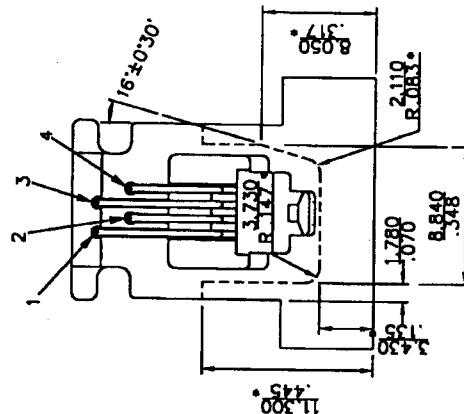
STYLE S

HOUSING (NOTE 2)

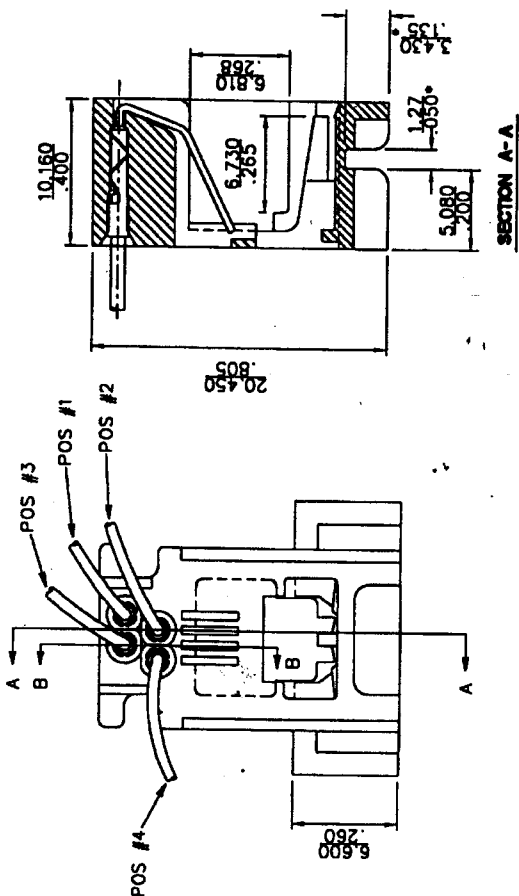
GOLD PLATED



SECTION B-B

- NOTE:
1. FOR VISUAL MECHANICAL AND FUNCTIONAL REQUIREMENTS SEE PRODUCT SPEC 12-003.
 2. HOUSING MATERIAL: SEE CHART.
 3. TERM MATL: 3/4 HARD BRASS ALLOY UNSC26000.
STYLE S - PREPLATED WITH 2.54/100 TO 7.62/300U TIN LEAD.
STYLE R - UNPLATED.
 4. GOLD WIRE MATL: 135 TO 150 M PSI PHOS. BRONZE ALLOY, UNS C51000. PLATING: 0.76U/30U" OVER 2.54/100U" NI OR SPECIFIED ON THE TABLE.
 5. INSULATED WIRE:
STYLE A: 27 AWG, 7 STRANDS OF TINNED COPPER WIRE, PVC INSULATION.
STYLE B: 27 AWG, 7 STRANDS OF TINNED COPPER WIRE, TOP COATED, PVC INSULATION.
STYLE C: 28AWG, 7 STRANDS OF TINNED COPPER WIRE, TOP COATED, PVC INSULATION.
STYLE D: 26AWG, 7 STRANDS OF TINNED COPPER WIRE, PVC INSULATION.
 6. ALL DIMENSIONS MARKED WITH ASTERISKS ARE REF FOR MOUNTING.



SECTION A-A



mat'l code				tolerance unless otherwise specified		CUSTOMER COPY					
rev.	ecn	no.	dr	date	linear	0 ± 0.25	 projection	title MOD JACK 616B	code TWIN	sheet 1 OF 3	
S	T	T	120074	C L	$12/20/96$	$.000 \pm 0.13$					
U	U	U	150048	T C	$06/07/96$	$.000 \pm 0.03$					
U	U	U	H00126	T C	$06/07/96$	angles $\pm 2^\circ$					
V	U	U	M00163	M C	$10/11/00$	unit					
enr M CHENG					10/09/00		mm/inch		product family		
chr M CHENG					10/11/00		scale		size dwg no.		
opdr J GGH					10/11/00		---		A3		65900
sheet revision					V	U	U				
sheet					V	U	U				

PRODUCT NO.	POS. NO.	WIRE COLOR	DIR. L	WIRE STYLE (NOTE 5)	WORKING DIA. (NOTE 2)	TERMINAL STYLE (NOTE 3)
65900-001	1	BLACK	177.80/7.25	A	A.S.T. UL-94V-0 GRAY	5
	2	GREEN				
	3	WHITE				
	4	RED				
65900-002	1	BLACK				5
	2	WHITE				
	3	WHITE				
	4	RED				
65900-003	1	BLACK	177.80/7.25	A		5
	2	GREEN				
	3	WHITE				
	4	RED				
65900-004	1	BLACK	177.80/7.25	A		5
	2	WHITE				
	3	WHITE				
	4	RED				
65900-005	1	BLACK	177.80/7.25	A		5
	2	WHITE				
	3	WHITE				
	4	RED				
65900-006	1	BLACK	177.80/7.25	A	A.S.T. UL-94V-0 GRAY	5
	2	GREEN				
	3	WHITE				
	4	RED				
65900-007	1	BLACK	177.80/7.25	A		5
	2	WHITE				
	3	WHITE				
	4	RED				
65900-008	1	BLACK	177.80/7.25	A		5
	2	WHITE				
	3	WHITE				
	4	RED				
65900-009	1	BLACK	177.80/7.25	A	A.S.T. UL-94V-0 GRAY	5
	2	GREEN				
	3	WHITE				
	4	RED				
65900-010	1	BLACK	177.80/7.25	A		5
	2	WHITE				
	3	WHITE				
	4	RED				
65900-011	1	BLACK	177.80/7.25	A		5
	2	WHITE				
	3	WHITE				
	4	RED				
65900-012	1	BLACK	177.80/7.25	A	A.S.T. UL-94V-0 GRAY	5
	2	GREEN				
	3	WHITE				
	4	RED				



CUSTOMER COPY
FOR REFERENCE ONLY

CUSTOMER COPY
FOR REFERENCE ONLY

PRODUCT NO.
SEE CHART

PRODUCT NO	POS NO	WIRE COLOR	DIM L	WIRE STYLE. NOTE 5	HSG MAT'L NOTE 2	TERMINAL STYLE NOTE 3	CONTACT PLATING
65900-014	1	BLACK	177.80/7.00	A	A.B.S. UL94V-0 GRAY	STYLE "S"	.76 μ /30 μ "GXT"
	2	WHITE					
	3	WHITE					
	4	RED	177.80/7.00				
65900-015	1	BLACK	177.80/7.00	D	A.B.S. UL94V-0 GRAY	STYLE "S"	.76 μ /30 μ "GXT"
	2	WHITE					
	3	WHITE					
	4	RED	177.80/7.00				
65900-016	1	YELLOW	40.0/1.57"	A	A.B.S. UL94V-0 GRAY	STYLE "S"	.76 μ /30 μ "GXT"
	2	GREEN					
	3	RED					
	4	BLACK	40.0/1.57"				

mat'l code		CUSTOMER		FCJ	
rev.	ecn no.	dr	date	COPY	
V					
tolerance unless otherwise specified		projection		title	
linear		.0 \pm 0.25		MOD JACK ASS'Y 616B	
.00 \pm 0.13		.000 \pm 0.05		product family	
angles		dr		size	
C.L. FENG 12/08/95		unit		A3	
ANGEL M. CHENG 10/11/00		mm/inch		65900	
ANGEL M. CHENG 10/11/00		scale		code	
ANGEL M. CHENG 10/11/00		sheet		NT	
ANGEL M. CHENG 10/11/00		3 of		3 of	
sheet/revision	index	sheet	1	PDM: Rev:V	
STATUS: Released		Printed: Mar 09, 2007		D	