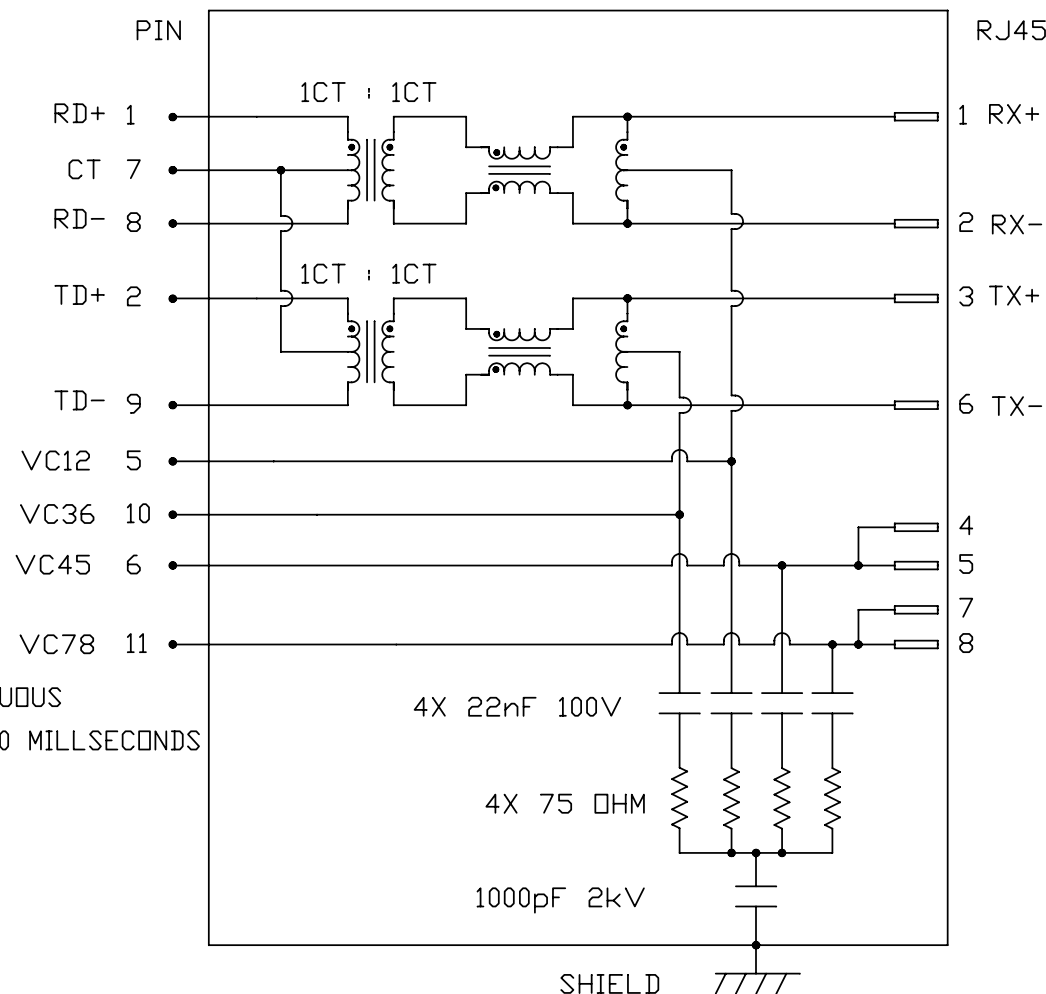




## ELECTRICAL CHARACTERISTICS @ 25°C

URNS RATIO	1CT : 1CT ±2%
□CL @ 100kHz/100mVRMS 8mA DC BIAS	350μH MIN.
INSERTION LOSS 100KHz TO 100MHz	-1.5 dB MAX.
RETURN LOSS (MIN.) 2MHz-30MHz 60MHz-80MHz	-16 dB MIN. -10 dB MIN.
CROSS TALK 100KHz - 100MHz	-30 dB MIN.
HIPOT (ISOLATION VOLTAGE) 100% OF PRODUCTION TESTED TO COMPLY WITH IEEE 802.3 ISOLATION REQUIREMENTS	2250 VDC
BALANCED DC LINE CURRENT	350mA MAX. @ 57 VDC CONTINUOUS 500mA MAX. @ 57 VDC FOR 200 MILLSECONDS

## SCHEMATIC



ORIGINATED BY	DATE	TITLE	PART NO. / DRAWING NO.	STANDARD DIM.	[ ] METRIC DIM. AS REFERENCE
CHOW WANGCHUNG	05-19-11	10/100 MagJack® PoE	08131X1T57-F	TOL. IN INCH	UNIT : INCH [mm] REV. : D
DRAWN BY	DATE	0813-1X1T-57-F PATENTED	FILE NAME	.X	SCALE : N/A SIZE : A4
LEE WEIDE	05-19-11		08131X1T57-F_D.DWG	.XX	⊕
				.XXX	⊖
					PAGE : 2

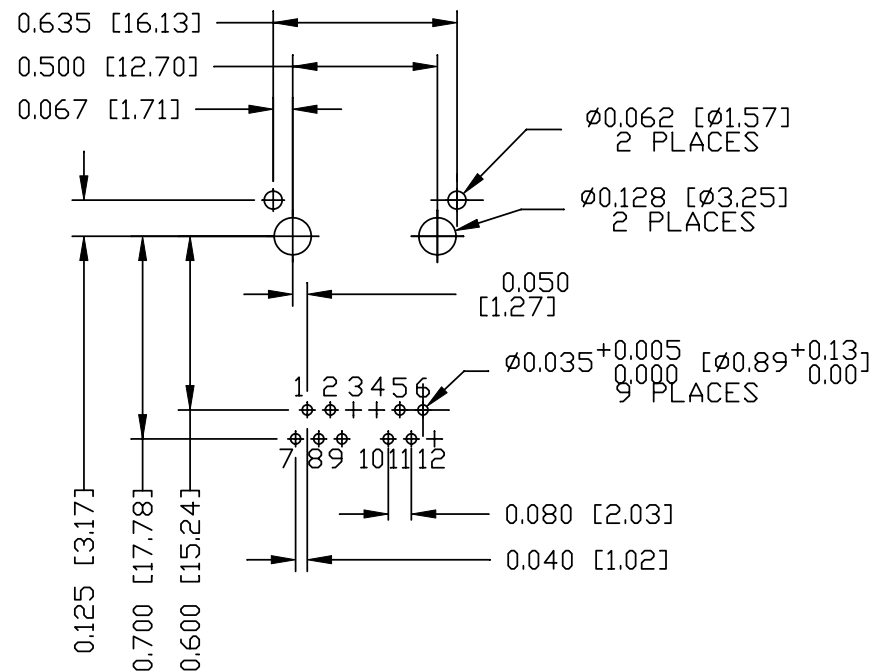
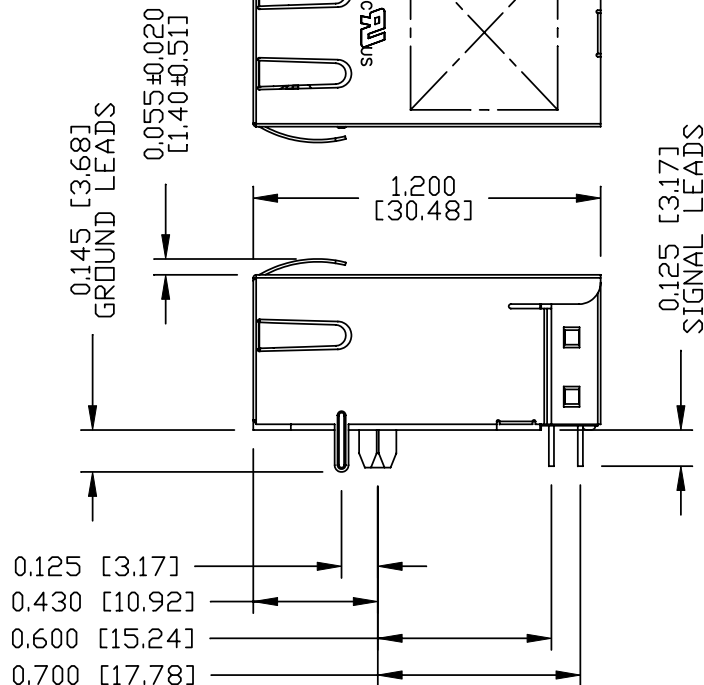
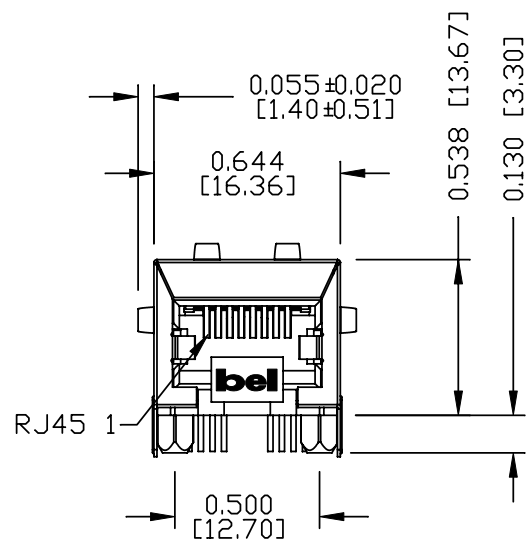
THE INFORMATION CONTAINED HEREIN IS CONSIDERED "PROPRIETARY" TO BEL FUSE INC. AND SHALL NOT BE COPIED, REPRODUCED OR DISCLOSED WITHOUT THE WRITTEN APPROVAL OF BEL FUSE INC.

## MECHANICAL SPECIFICATION

RoHS  
2002/95/EC



## RECOMMENDED PCB FOOTPRINT COMPONENT SIDE VIEW



### NOTES:

PLASTIC HOUSING: THERMOPLASTIC PBT  
FLAMMABILITY RATING UL 94V-0  
CONTACTS: 50 MICRO-INCH HARD GOLD PLATING  
WITH UNDERPLATING OF 50 MICRO-INCH NICKEL.  
OUTPUT PINS: TIN-COATED COPPER WIRE, DIA 0.018 INCH.  
METAL SHIELD: NICKEL PLATED ON COPPER ALLOY.  
(ALL GROUND LEAD ARE SOLDER DIPPED)  
JACK CAVITY CONFORMS TO FCC RULES AND REGULATIONS.

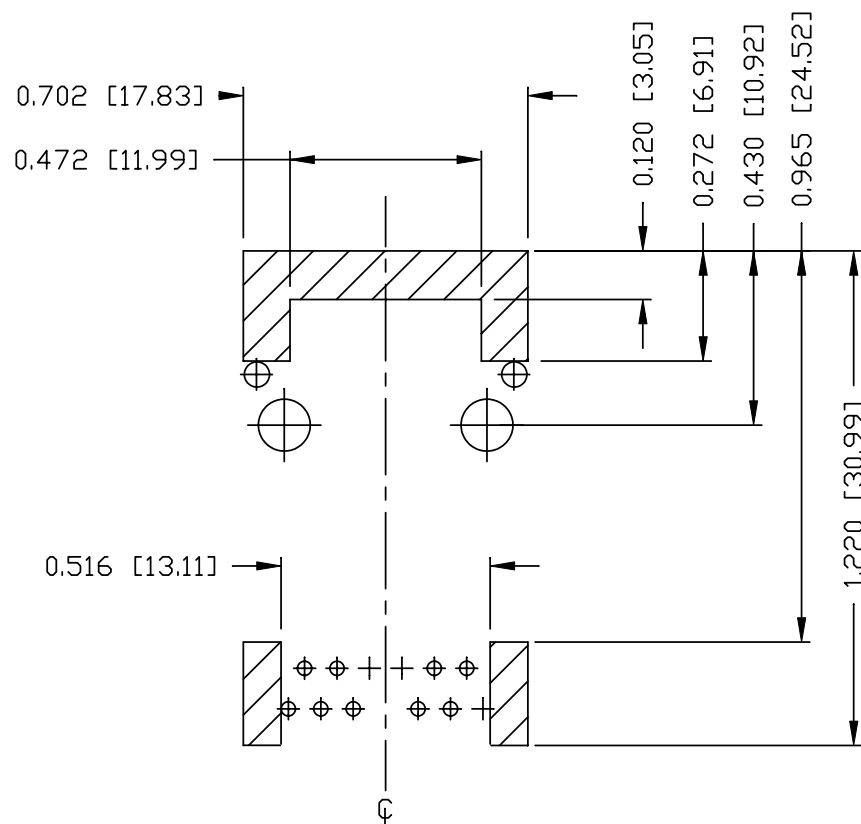
1. MARK PART WITH MFG LOGO, MFG NAME, PART NUMBER, DATE CODE AND PATENTED.

2. RoHS COMPLIANCE, PER EU DIRECTIVE 2002/95/EC.  
3. THE PRODUCT IS PATENTED, THE PATENT NUMBER ARE U.S. PAT. 5,736,910 AND U.S. PAT. 7,123,117.

UL US UL RECOGNIZED - FILE #E196366 AND E169987.

ORIGINATED BY	DATE	TITLE	PART NO. / DRAWING NO.	STANDARD DIM. TOL. IN INCH	[ ] METRIC DIM. AS REFERENCE
CHEN BILL	05-19-11	10/100 MagJack® PoE	08131X1T57-F	.X	UNIT : INCH [mm]
DRAWN BY	DATE	0813-1X1T-57-F	FILE NAME	.XX	SCALE : N/A
HE ZHEN	05-19-11	PATENTED	08131X1T57-F_D.DWG	.XXX	SIZE : A4
				±0.010	PAGE : 3





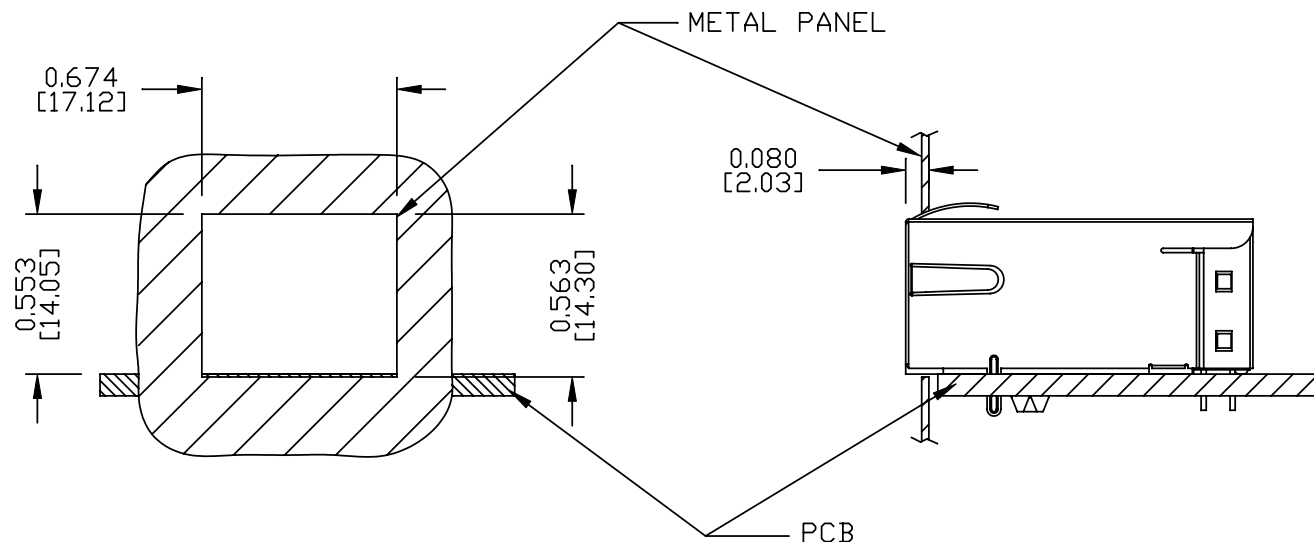
# NOTES

THE SHADED AREA ON THE CUSTOMER BOARD ARE  
RECOMMENDED TO BE CLEAR OFF ANY VIA HOLE OR  
COMPONENT PAD.

ORIGINATED BY	DATE	TITLE	PART NO. / DRAWING NO.	STANDARD DIM.		[ ] METRIC DIM. AS REFERENCE	
				TOL. IN INCH		UNIT : INCH [mm]	REV. : D
CHEN BILL	05-19-11	10/100 MagJack® PoE	08131X1T57-F	.X		SCALE : N/A	SIZE : A4
DRAWN BY	DATE	TITLE	FILE NAME	.XX		PAGE : 4	
				.XXX	±0.004		
HE ZHEN	05-19-11	0813-1X1T-57-F PATENTED	08131X1T57-F_D.DWG				



### SUGGESTED PANEL OPENING



### NOTES:

THE DISTANCE OF PANEL INSIDE SURFACE RELATIVE TO FRONT SURFACE OF PART IS ONLY A SUGGESTION.  
IN CASE THIS DISTANCE IS DIFFERENT, THE REQUIRED PANEL OPENING DIMENSIONS CHANGE ACCORDINGLY.

### PACKING INFORMATION

PACKING TRAY : 0200-9999-F1(TOP)

0200-9999-F2(BOTTOM)

PACKING QUANTITY : 40 PCS FINISHED GOODS PER TRAY

10 TRAYS (400 PCS FINISHED GOODS) PER CARTON BOX

NOTES: CARDBOARDS ARE PLACED BETWEEN LAYERS OF PACKING TRAY INSIDE CARTON BOX  
(INCLUDE THE UPPERMOST AND LOWERMOST TRAY)

ORIGINATED BY	DATE	TITLE	PART NO. / DRAWING NO.	STANDARD DIM. TOL. IN INCH	[ ] METRIC DIM. AS REFERENCE
CHEN BILL	05-19-11	10/100 MagJack® PoE	08131X1T57-F	.X	UNIT : INCH [mm] REV. : D
DRAWN BY	DATE		FILE NAME	.XX	SCALE : N/A SIZE : A4
HE ZHEN	05-19-11	0813-1X1T-57-F PATENTED	08131X1T57-F_D.DWG	.XXX ±0.004	PAGE : 5