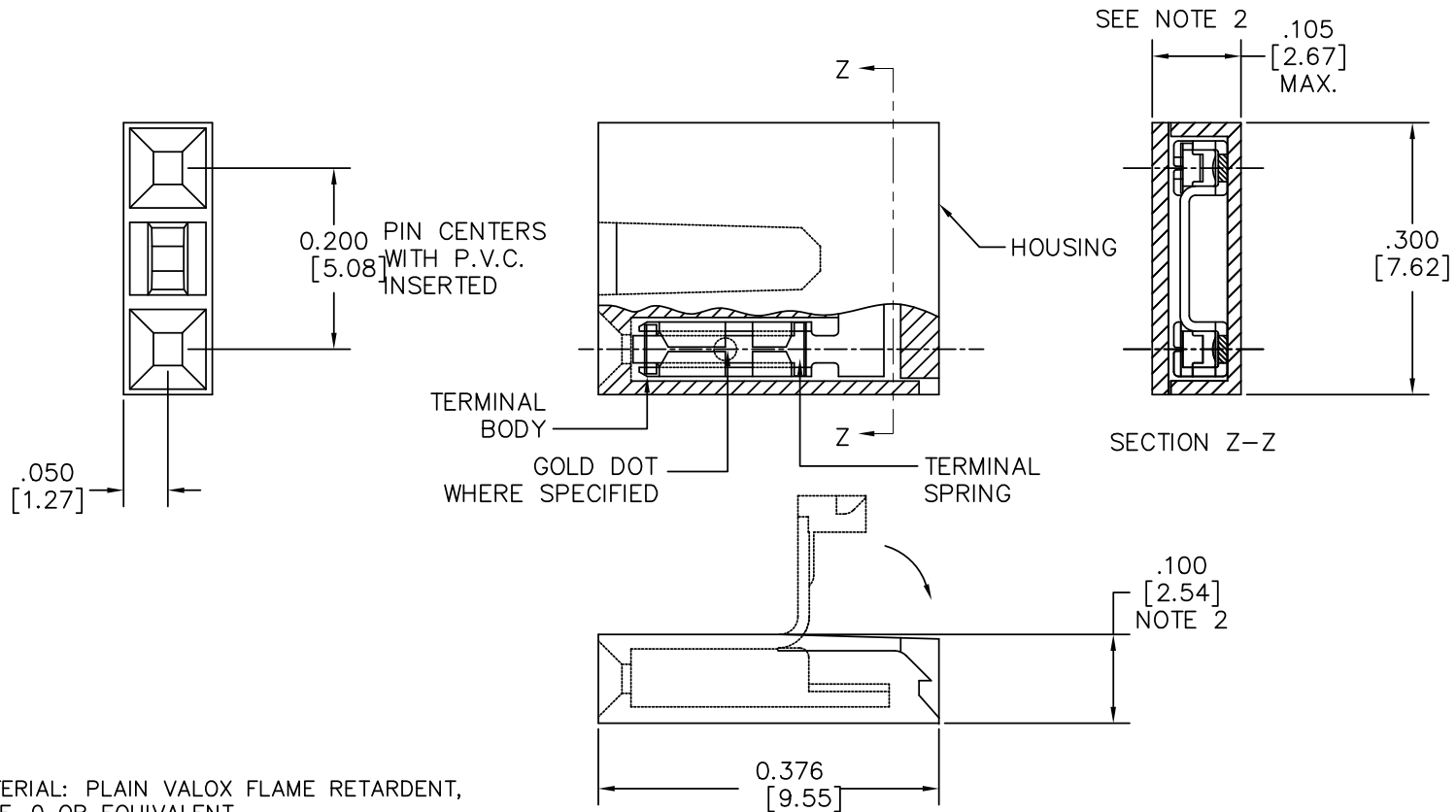


PRODUCT NO.  
SEE SHT. 2



#### NOTES

1. HOUSING MATERIAL: PLAIN VALOX FLAME RETARDENT, PER UL 94-VE-0 OR EQUIVALENT. COLOR WHITE
2. .100/2.54 MAX. APPLIES TO HOUSING BODY. .105/2.67 MAX. APPLIES TO BODY AND LID, AFTER LID IS CLOSED PER TMS-258-88
3. ADD 'LF' SUFFIX AT THE END OF PART NUMBERS FOR LEAD FREE OPTION.
4. IF "LF" THE P/N THE PRODUCT MEETS EUROPEAN UNION DIRECTIVES AND OTHER COUNTRY REGULATION AS DESCRIBED IN GS-22-008.
5. THE PRODUCT IS NOT INTENDED TO BE EXPOSED TO A MANUFACTURING SOLDER PROCESS.
6. PRODUCT SPECIFICATION: BUS-12-023.

mat'l. code		surface	tolerance	projection	product family	
		ISO 1302	ISO 406		JUMPER	
l	tr	ec	n	d	r	date
F	M06-0187	MHT	5/15/06			
G	M07-0112	MHT	2/14/07			
H	M09-0065	MHT	4/13/09			
J	BLX-N-011712	J.Z	2012-05-04			
		dr	J.W. BAIR	2/3/89	title	
		en	M.HAHN	2/3/89	MINI JUMP	
		chr			CONNECTOR ASS'Y 200 cc	
		app	M.HAHN	2/3/89	dwg no	
					sheet of 2	
					65771	
					type Product Customer Drawing	
sheet	revision	J	J			
index	sheet	1	2			

1

2 3

4

5

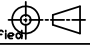
6

PRODUCT NO. NOTE 3	TERMINAL		TERMINAL SPRING	
	BODY MATERIAL	CONTACT PLATING	MATERIAL	PLATING
65771-001	.010/.025 THK. 1/4 HD. BRASS ALLOY UNS C26000	1.02μ/40μ" AU OR GXT OVER 1.27μ/50μ" NICKEL	.122/.0048 THK BE-CU ALLOY	GOLD FLASH
65771-002		TIN LEAD	UNS C17200 HEAT TREATED	TIN PLATED
65771-003				
65771-004	.010/.025 THK. 1/4 HD CU-NI ALLOY UNS C72500	.03/.001 MIN THK. GOLD DOT	.122/.0048 THK BE-CU ALLOY UNS C17200 HEAT TREATED	GOLD FLASH
65771-005	.25/.010 BRASS	.76μ/30μ" AU OR GXT		GOLD FLASH

OBSOLETE

LEAD FREE OPTION

PRODUCT NO.	TERMINAL		TERMINAL SPRING	
	BODY MATERIAL	CONTACT PLATING	MATERIAL	PLATING
65771-001LF	.010/.025 THK. 1/4 HD. BRASS ALLOY UNS C26000	1.02μ/40μ" AU OR GXT OVER 1.27μ/50μ" NICKEL	.122/.0048 THK BE-CU ALLOY	GOLD FLASH
65771-002LF		TIN	UNS C17200 HEAT TREATED	TIN PLATED
65771-004LF	.010/.025 THK. 1/4 HD CU-NI ALLOY UNS C72500	.03/.001 MIN THK. GOLD DOT	.122/.0048 THK BE-CU ALLOY UNS C17200 HEAT TREATED	GOLD FLASH
65771-005LF	.25/.010 BRASS	.76μ/30μ" AU OR GXT		GOLD FLASH

mat'l. code		surface ISO 1302 ✓	tolerance ISO 406 ISO 1101	projection 	product family JUMPER	
ltr ecn nchr date		tolerances unless otherwise specified		INCH/MM	title	
J		angles	linear		MINI JUMP	
		0°±2'		scale	10:1	
		dr	J.W. BAIR	2/3/89	dwg no	
		engr	M.HAHN	2/3/89	shee 2 of 2	
		chr			size	
		appd	M.HAHN	2/3/89	A3	
sheet index		revision sheet		type		Product Customer Drawing

