

# CHARACTERISTICS

## ELECTRICAL

CIRCUIT: SINGLE POLE, 4 THROW, CENTER OFF  
MOMENTARY CONTACT (SELF RETURN  
TO CENTER OFF.)

RATING: 1 AMP INDUCTIVE AT 28 VDC 100,000 CYCLES  
OVERLOAD: 2 AMP INDUCTIVE AT 28 VDC FOR 100 CYCLES.  
DWV: 1050 VRMS

## MECHANICAL

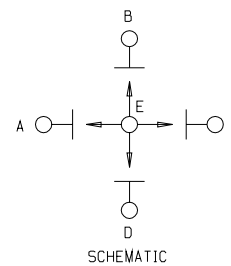
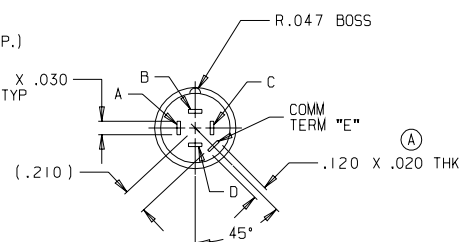
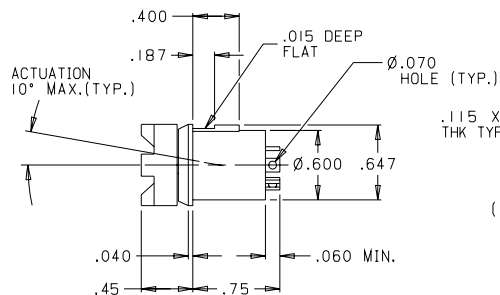
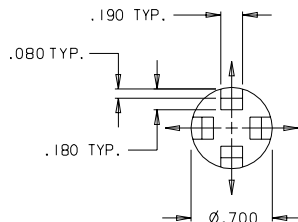
SWITCH ACTION SHALL BE SMOOTH, NO SNAP ACTION.  
ACTUATING FORCE: 16 OZ.  $\pm$  6 OZ.  
LEVER TRAVEL: 15° MAX. FROM CENTER OFF.

LEVER PIVOT & STOP STRENGTH: SWITCH MUST BE  
CAPABLE OF WITHSTANDING A FORCE OF 25 LBS (A)  
APPLIED TO THE ACTUATING BUTTON. THE BUTTON  
SHALL ALSO WITHSTAND A 15 LB MINIMUM PULL FORCE.

## PHYSICAL

BUTTON: GRAY NYLON  
HOUSING: BLACK RYTON  
ENCLOSURE: DUSTTIGHT, AND  
MEETS ENVIRONMENTAL TESTING OF MIL-S-9419.  
TEMPERATURE RANGE: -55°C TO +85°C

MARK: OTTO 21649  
T4-0109  
TERMINAL IDENT.  
& DATE CODE



## NOTE:

CONTACT MADE IN OPPOSITE  
DIRECTION OF LEVER TRAVEL.

- MINOR
- MAJOR
- CRITICAL
- SPC CRITICAL

UNLESS OTHERWISE  
SPECIFIED:  
DIMENSIONS ARE  
IN INCHES.  
TOLERANCES:  
.XX  $\pm$  .03  
.XXX  $\pm$  .010  
ANGLES  $\pm$  2°  
DO NOT SCALE

THIRD ANGLE  
PROJECTION

OTTO CONTROLS  
DIVISION OF  
OTTO ENGINEERING INC.  
CARPENTERSVILLE, ILLINOIS USA

THIS DOCUMENT IS THE CONFIDENTIAL  
PROPERTY OF OTTO ENGINEERING, INC..  
IT IS PROVIDED ON A RESTRICTED  
BASIS AND IS NOT TO BE USED IN ANY  
WAY DETRIMENTAL TO THE INTERESTS  
OF OTTO ENGINEERING, INC..

PART NAME  
SWITCH, 4-WAY TOGGLE

|                |                   |           |              |      |
|----------------|-------------------|-----------|--------------|------|
| DRWN. SH       | SIZE              | FSCM NO   | DRAWING NO.  | REV. |
| CHKD. DB       | B                 | 21649     | T4-0109      | A    |
| APPD. MGC      |                   |           |              |      |
| DATE 22 NOV 91 | WT. 10 GRAMS MAX. | SCALE 1:1 | SHEET 1 OF 1 |      |

# Mouser Electronics

Authorized Distributor

Click to View Pricing, Inventory, Delivery & Lifecycle Information:

OTTO:

T4-0109 JHT-1111AA1N