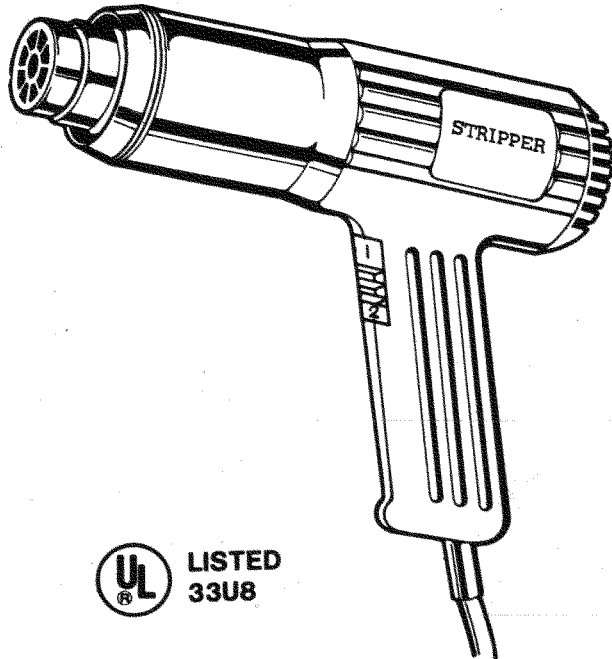


MODEL: HG-150

Heat Stripper

INSTRUCTION MANUAL



LISTED
33U8

SPECIFICATIONS :

HEAT STRIPPER MODEL HG-150

Low setting 750 W (315°C/600°F)

High setting 1500 W (600°C/1150°F)

Double-insulated to minimize electrical risk.

Weight: 0.6 kg (1.4 pounds)

- * Read the safetyguards first and follow the directions.
- * It becomes extremely hot. Do not touch nozzle or lay on flammable surfaces when in use or right after use.
- * Do not use the stripper on surfaces that can be damaged by heat such as vinyl coverings.

FEATURES:

1. One of the most versatile tools available provides an easy, flameless way to remove paint and varnish from a wide variety of surfaces.
2. Use for paint and wallpaper removal, forming of plastic, softening, drying, shrinking, waxing, curing, thawing. For use in the home, plumbing, electrical, motor repairs, boat building and industry in general.
3. Designed with safety and comfort. Use high quality industrial grade components which have obtained safety approvals.

CAUTION- TO PROVIDE CONTINUED PROTECTION AGAINST RISK OF ELECTRIC SHOCK, CONNECT TO PROPERLY GROUNDED OUTLETS ONLY.

WARNING- TO REDUCE THE RISK OF FIRE OR ELECTRIC SHOCK, DO NOT EXPOSE THIS PRODUCT TO RAIN OR MOISTURE. STORE INDOORS. READ INSTRUCTION MANUAL BEFORE USING.

IMPORTANT SAFEGUARDS

1. Do not use either in damp, wet location, or gaseous, explosive atmospheres. Be sure to use in well ventilated areas. Do not expose to rain.
2. Never carry tool by cord or yank the cord. Keep cord from heat, oil and sharp edges.
3. Tools and paint scrapings can be very hot. Use work gloves when scraping to avoid burns.
4. Do not over-reach, especially when working on ladder. Keep proper footing and balance at all times.
5. Wear eye protection and respirator. Never point the hot air stream at persons and never look directly into the nozzle outlet of the blower.
6. If using outdoors, use only extension cords rated for outdoor use.
7. Do not use as a hair dryer.
8. Danger of burning on metal nozzle. Do not touch. Do not hold nozzle close to objects during or immediately after use.
9. Disconnect tool from power supply when not in use. Always allow the tool to cool before storage. Place it in an upright position. Store indoors in a dry place out of reach of children.
10. Turning on and off must always be done by means of the switch not by inserting or pulling the plug from the main socket.

INSTRUCTION MANUAL:

Each unit is provided with a instruction manual. The manual contains safety and operating instructions. Also, the instruction manual includes the following statements:

- A. Hidden areas such as behind walls, ceilings, floors, soffit boards and other panels may contain flammable materials that could be ignited by the heat gun when working in these locations. The ignition of these materials may not be readily apparent and could result in property damage and injury to persons.

When working in these locations, keep the heat gun moving in a back-and-forth motion. Linger or pausing in one spot could ignite the panel or the material behind it.

B.

IMPORTANT SAFETY INSTRUCTIONS

READ THESE INSTRUCTIONS

WARNING: Extreme care should be taken when stripping paint. The peelings, residue and vapors of paint may contain lead, which is poisonous. Any pre-1977 paint may contain lead and paint applied to homes prior to 1950 is likely to contain lead. Once deposited on surfaces, hand to mouth contact can result in the ingestion of lead. Exposure to even low levels of lead can cause irreversible brain and nervous system damage; young and unborn children are particularly vulnerable.

Before beginning any paint removal process you should determine whether the paint you are removing contains lead. This can be done by your local health department or by a professional who uses a paint analyzer to check the lead content of the paint to be removed. **LEAD-BASED PAINT SHOULD ONLY BE REMOVED BY A PROFESSIONAL AND SHOULD NOT BE REMOVED USING A HEAT GUN.**

Persons removing paint should follow these guidelines:

1. Move the work piece outdoors. If this is not possible, keep the work area well ventilated. Open the windows and put an exhaust fan in one of them. Be sure the fan is moving the air from inside to outside.
2. Remove or cover any carpets, rugs, furniture, clothing, cooking utensils and air ducts.
3. Place drop cloths in the work area to catch any paint chips or peelings. Wear protective clothing such as extra work shirts, overalls and hats.

4. Work in one room at a time. Furnishings should be removed or placed in the center of the room and covered. Work areas should be sealed off from the rest of the dwelling by sealing doorways with drop cloths.
5. Children, pregnant or potentially pregnant women and nursing mothers should not be present in the work area until the work is done and all clean up is complete.
6. Wear a dust respirator mask or a dual filter (dust and fume) respirator mask which has been approved by the Occupational Safety and Health Administration (OSHA), the National Institute of Safety and Health (NIOSH), or the United States Bureau of Mines. These masks and replaceable filters are readily available at major hardware stores. Be sure the mask fits. Beards and facial hair may keep masks from sealing properly. Change filters often. **DISPOSABLE PAPER MASKS ARE NOT ADEQUATE.**
7. Use caution when operating the heat gun. Keep the heat gun moving as excessive heat will generate fumes which can be inhaled by the operator.
8. Keep food and drink out of the work area. Wash hands, arms and face and rinse mouth before eating or drinking. Do not smoke or chew gum or tobacco in the work area.
9. Clean up all removed paint and dust by wet mopping the floors. Use a wet cloth to clean all walls, sills and any other surface where paint or dust is clinging. **DO NOT SWEEP, DRY DUST OR VACUUM.** Use a high phosphate detergent or trisodium phosphate (TSP) to wash and mop areas.
10. At the end of each work session put the paint chips and debris in a double plastic bag, close it with tape or twist ties, and dispose of properly.
11. Remove protective clothing and work shoes in the work area to avoid carrying dust into the rest of the dwelling. Wash work clothes separately. Wipe shoes off with a wet rag that is then washed with the work clothes. Wash hair and body thoroughly with soap and water.

SAVE THESE INSTRUCTIONS

SOME SUGGESTIONS FOR USE:

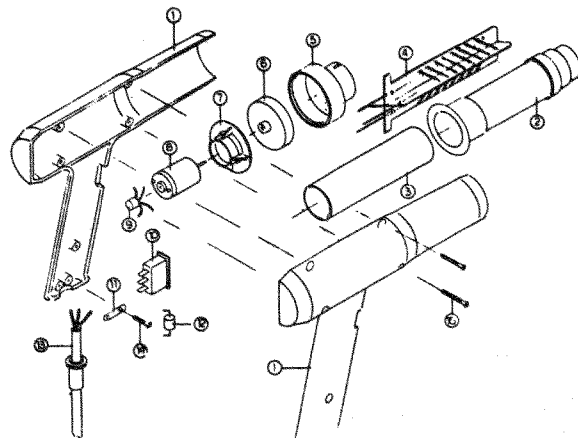
- * Paint, varnish and lacquer stripping, wall-paper stripping, thawing or piping and engine.
- * Fast drying of paints and enamels.
- * Pre-drying surfaces for fast preparation.
- * Clean removal of labels from most surfaces.
- * Perfect for fixing PVC labels.
- * Carpet and floor-covering removal made easier.
- * Application of all automotive repair fillers.
- * Shaping of all low-temperature plastic including polyethylene and PVC.
- * Shaping of high-temperature plastic including Acrylic and Plexi glass.
- * Plastic welding, including PVC-coated fabrics and foils.
- * Application of heat shrink tubing.
- * Shrink wrapping.
- * Repaire of surf-boards, skis and other sports goods.
- * Loosening screws that are over-tightened.

CARE AND MAINTENANCE:

Keep the air intake and outlet opening clean and free of dirt and debris.
Use only a damp cloth and general household cleaning agent to wipe the gun clean. Do not use turpentine, paint thinner, gasoline, or similar substances to clean the stripper.

HOW TO USE:

1. Allow about 1 minute warm-up time, holding the nozzle 1"-2" away from the surface. If this doesn't lift or loosen the paint switch to the high heat setting.
2. Protect those area you do not want to move.
3. Heat surfaces to be stripped for a few minutes until paint softens. Use a sharp shavehook or scraper and keep stripper just ahead of the paint scraper to ensure the heat penetrates the paint. Maintain heat as you scrape.
4. For mouldings or carved work, soften as above then use a wire brush to remove the paint.
5. Removal time will vary depending on type of paint being stripped. If there are many layers of paint, and not removed on the first pass, just repeat the process.
6. After operating on high heat turn the unit down to low heat for .1 - 2 minutes before turning it off.
7. Set the tool upright after it is turned off. Set it on a level, stable surface, where it won't get knocked over. Don't store it away until it is completely cooled down.
8. Never allow any liquid to get inside the tool or immerse any part of the tool into a liquid.



POS	PART NO.	DESCRIPTION
1.	HG-001-00	Housing
2.	HG-01-0	Blower
3.	HG-020-00	Isolated paper
4.	HG-1-00	Hester wire
5.	HG-023-00	Air concentrator
6.	HG-014-00	Fan
7.	HG-022-00	Motor support stand
8.	HG-025-00	Motor
9.	HG-011-00	Commutator
10.	HG-013-00	3-position switch
11.	HG-028-00	Strain relief
12.	HG-016-00	DIODE
13.	HG-033-00	POWER CORD
14.	HG-040-L0	Screw
15.	HG-040-A0	Screw