

Features:

- Available in three body types: Peel-A-Way® Removable Terminal Carriers, molded Solid Strips, and molded Snap Strips [breakable at .100/(2.54mm)].
- Tapered entry for ease of insertion.
- Multi-finger contacts for reliability.
- Closed bottom sleeve for 100% anti-wicking of solder.
- Custom configurations available.

Specifications:

Terminals:

Brass - Copper Alloy
(C36000) ASTM-B-16

Contacts:

Beryllium Copper
(C17200) ASTM-B-194

Solder Preform:

Standard: 63Sn/37Pb
Lead-free: 95.5Sn/4.0Ag/0.5Cu

Plating:

G - Gold over Nickel
M - Matte Tin over Nickel
T - Tin/Lead over Nickel

Gold per ASTM-B-488
Matte Tin per ASTM545-97
Tin/Lead per MIL-P-81728
Nickel per QQ-N-290



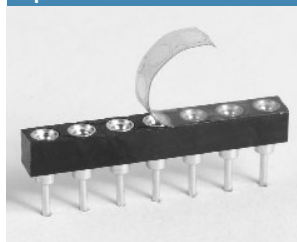
5 Energy Way, West Warwick, RI 02893 USA
Tel: 800.424.9850 | 401.823.5200
Fax: 401.823.8723
info@advanced.com | www.advanced.com
Catalog 16 rev. Sept. 07

Table of Models

	Description: Peel-A-Way® Strips (KSS) Material: Polyimide Film Index: -269°C to 400°C (-452°F to 752°F)	
	Description: Molded Snap Strips (RSS, RLSS) Mat'l: High Temp. Liquid Crystal Polymer (LCP) Index: -40°C to 260°C (-40°F to 500°F)	 Head Above Plastic Head Flush with Plastic
	Description: Molded Solid Strips (RNB, RLNB) Mat'l: High Temp. Liquid Crystal Polymer (LCP) Index: -40°C to 260°C (-40°F to 500°F)	 Head Above Plastic Head Flush with Plastic

RSS/RLSS replaces HSS/HLSS and SS/LSS. RNB/RLNB replaces HNB/HLNB and NB/LNB.

Options

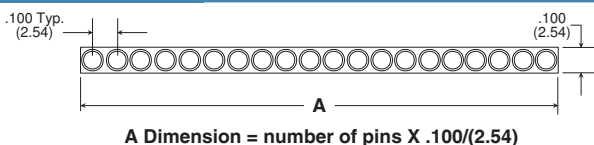


Tape Seal - add 3M to end of part number

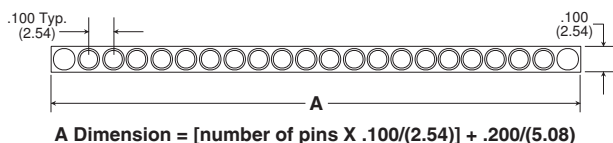
- Removable tape seal protects plated contact in harsh environments.
- Sealed socket will not allow dirt and other contaminants to enter socket chamber and become entrapped behind contact fingers.
- Spray flux without contaminating contact area.
- Material - Silicone Backed Polyimide Film, -74°C to 260°C (-100°F to 500°F) Intermittent to 371°C (700°F)

Dimensional Information

Molded Body Types



Peel-A-Way® Body Types



How To Order

Body Type	KSS	032	-85	M	G	Contact Plating
RoHS Compliant:						RoHS Compliant:
KSS - Peel-A-Way®						G - Gold
RSS - Molded Snap (head above)						T - Tin/Lead
RLSS - Molded Snap (head flush)						
RNB - Molded Solid (head above)						Terminal Plating
RLNB - Molded Solid (head flush)						RoHS Compliant:
						G - Gold
						M - Matte Tin
						T - Tin/Lead
Number of Pins						Terminal Type
KSS: 2-100 pos.						See options on next page
RSS/RLSS: 20, 30 or 32 pos.						
RNB/RLNB: 3-20, 30 or 32 pos.						



Note: Terminals plated with Matte Tin are available only with Gold plated contacts.
Quick-Turn delivery is not available on products with Matte Tin plating.

Products shown covered by patents issued and/or pending. Specifications subject to change without notice.

inch/(mm)

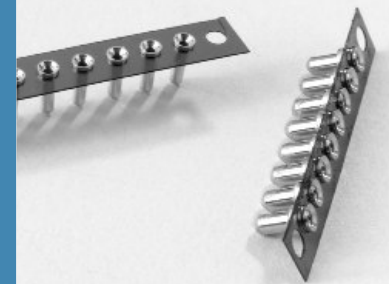
SIP Sockets Molded and Peel-A-Way® Insulators



Standard Quick-Turn Terminals

Additional standard and custom terminals available.
See Terminals section or consult factory.

Type -51	Type -04	Type -49	Type -01
		<p>Not for use with RSS or RNB.</p>	<p>Molded only</p>
Type -33	Type -85	Type -176	Type -210
<p>Peel-A-Way® only</p>	<p>Peel-A-Way® only</p>	<p>Peel-A-Way® only</p>	<p>Peel-A-Way® only</p>



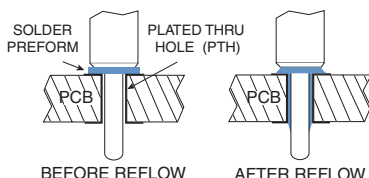
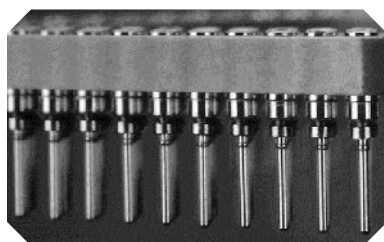
Available Online:

- RoHS Qualification Test Report
- CAD Drawings

Solder Preform Terminals

Tin/Lead: Type -150 Lead-free: Type -811	Tin/Lead: Type -151 Lead-free: Type -812	Tin/Lead: Type -111 Lead-free: Type -810
		<p>Peel-A-Way® only</p>

Intrusive Reflow Application



Solder Preform Terminals

- Combines the labor of socket loading and solder application into one operation.
- Eliminates the use of solder paste and screening operation.
- Eliminates solder bridges and/or solder shorts due to excess solder.
- Ensures a reliable solder joint with controlled solder volume.
- Ideal for surface mount and mixed technology applications.
- For custom solder preform terminal applications consult factory.



5 Energy Way, West Warwick, RI 02893 USA
Tel: 800.424.9850 | 401.823.5200
Fax: 401.823.8723
info@advanced.com | www.advanced.com
Catalog 16 rev. Sept. 07