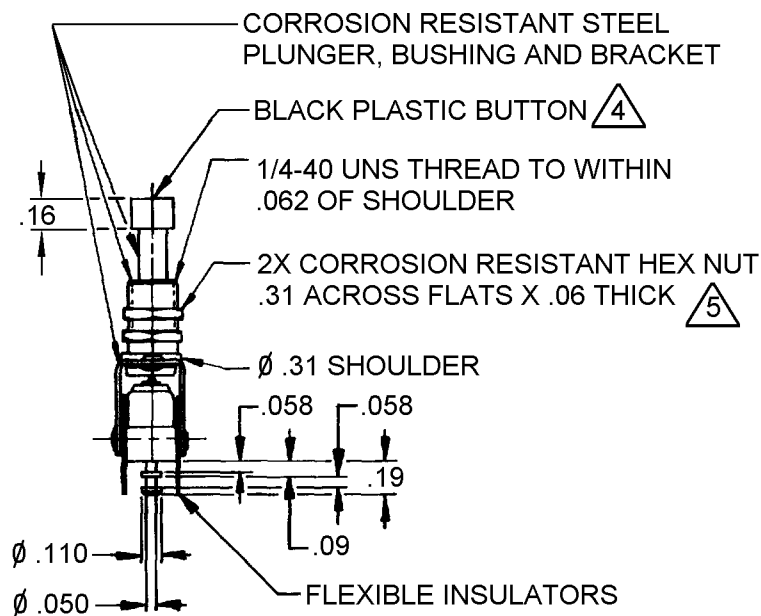
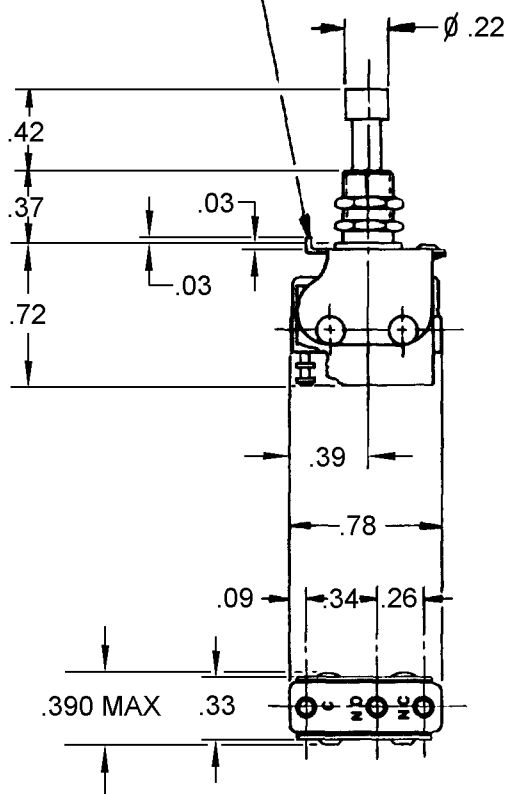


KEYING TAB .025  
THICK X .088 WIDE



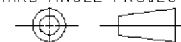
**NOTES**

- 1 - UNIT INCLUDES MS 25085-2 TYPE BASIC SWITCH
- 2 - TERMINALS ARE PLATED FOR SOLDERING
- 3 - RECOMMENDED FOR MANUAL OPERATION ONLY
- (4) BUTTON FURNISHED UNASSEMBLED
- (5) MOUNTING HARDWARE FURNISHED UNASSEMBLED

ANSI Y14.5M-1982 APPLIES

THIS DRAWING COVERS A PROPRIETARY ITEM AND IS THE PROPERTY OF MICRO SWITCH, A DIVISION OF HONEYWELL. THIS DRAWING IS NOT TO BE COPIED OR USED WITHOUT THE APPROVAL OF MICRO SWITCH.

THIRD ANGLE PROJECTION



**CHARACTERISTICS**

OPERATING FORCE-----1 LB APPROX.

**ELECTRICAL DATA**

CONTACT ARRANGEMENT

S P D T

250 VAC ----- 5 AMP

30 VOLTS DC RATING

SEA LEVEL 50,000 FT

INDUCTIVE 3 AMP 2.5 AMP

RESISTIVE 5 AMP 5 AMP

MAXIMUM INRUSH ----- 24 AMP

SCALE **FULL**

DO NOT  
SCALE PRINT

**UNLESS OTHERWISE SPECIFIED  
TOLERANCES ARE**

ONE PLACE (.0) ±.030

TWO PLACE (.00) ±.015

THREE PLACE (.000) ±.005

ANGLES ±

WEIGHT

# Mouser Electronics

Authorized Distributor

Click to View Pricing, Inventory, Delivery & Lifecycle Information:

[Honeywell:](#)

[1PB556-T2](#)