

Flush-type connector - SACC-CIP-M8FS-3P SMD SH T - 1412235

Please be informed that the data shown in this PDF Document is generated from our Online Catalog. Please find the complete data in the user's documentation. Our General Terms of Use for Downloads are valid (<http://phoenixcontact.com/download>)



Flush-type connector, 3-position, SocketLink:straightLink:M8, A-coded, PCB mounting, SMD



Key Commercial Data

Packing unit	1 pc
Minimum order quantity	60 pc
Custom tariff number	85366990
Country of origin	Germany

Technical data

Ambient conditions

Ambient temperature (operation)	-25 °C ... 105 °C (Plug / socket)
	-40 °C ... 105 °C (without mechanical actuation)
Degree of protection	IP67 (correctly plugged in and locked)
	IP65 (not plugged in, by means of additional O-ring seal with device)

General

Note	The electrical and mechanical data specified assume that the connector pair is correctly locked and mounted. If the connector is unlocked and if there is a danger of contamination, the connector must be sealed using a protective cap > IP54. Influences arising from litz wires, cables or PCB assembly must also be taken into consideration.
Rated current at 40°C	3 A
Rated voltage	50 V AC
	60 V DC
Number of positions	3
Contact resistance	≤ 3 mΩ
Insulation resistance	≥ 100 MΩ
Coding	A - standard

Flush-type connector - SACC-CIP-M8FS-3P SMD SH T - 1412235

Technical data

General

Standards/regulations	M8 connector IEC 61076-2-104
Surge voltage category	II
Connection method	SMD
Insertion/withdrawal cycles	> 100
Mounting type	PCB mounting
Type of packaging	Tray

Material

Inflammability class according to UL 94	V0
Contact material	CuZn
Contact surface material	Au
Contact carrier material	PA
Sealing material	FKM

Classifications

eCl@ss

eCl@ss 5.1	27143423
eCl@ss 6.0	27279220

ETIM

ETIM 5.0	EC002061
----------	----------

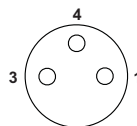
Drawings

Dimensional drawing

SMD
tray
packaging

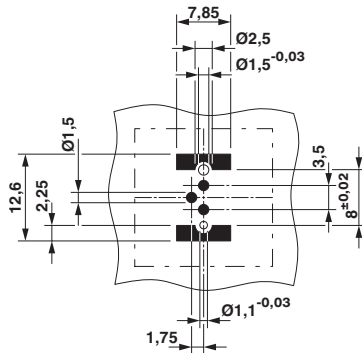
Pin assignment M8 socket, 3-pos., view female side

Schematic diagram

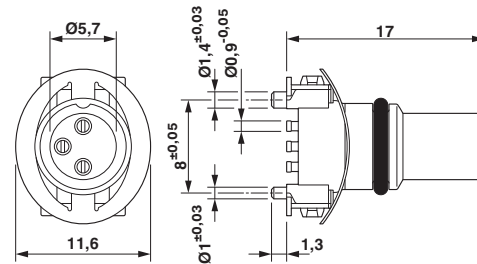


Flush-type connector - SACC-CIP-M8FS-3P SMD SH T - 1412235

Drilling diagram



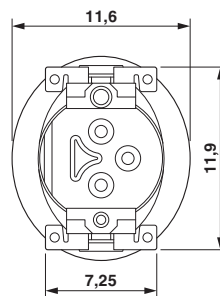
Dimensional drawing



M8 flush-type socket

Drilling diagram

Dimensional drawing



View of solder side