

DIN Connector, Socket, 3-pole, solder terminals for PCB



Description

- PCB Mounting:
Screw-on mounting, from rear-side
- DIN Plug: 3-pole, straight

Weblinks

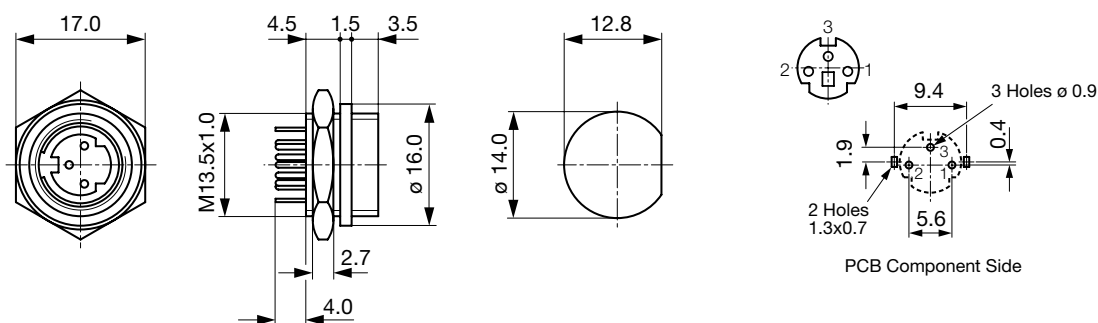
[pdf-datasheet](#), [html-datasheet](#), [General Product Information](#), [RoHS](#), [CHINA-RoHS](#), [REACH](#), [Mating Connectors](#), [e-Shop](#), [SCHURTER-Stock-Check](#), [Distributor-Stock-Check](#)

Technical Data

Diameter	9.0 mm
Number of Poles	3-pole
Ratings DC	1 A / 12 VDC
Ratings AC	1 A / 100 VAC
Dielectric Strength	250 VAC
Insulation Resistance	> 50 MΩ @ 250 VDC

Allowable Operation Temp.	-20 °C to 70 °C
Terminal	PCB terminals silver plated
Mounting	Screw-on mounting max. 2.0 mm
Lifetime	5000 Insertions

Dimensions



All Variants

Product group	Diameter [mm]	Number of Poles	Terminal	Order Number
DIN Plug/Socket	9.0	3-pole	PCB terminals	4850.2300

Availability for all products can be searched real-time: <http://www.schurter.com/en/Stock-Check/Stock-Check-SCHURTER>

Packaging unit 250 Pcs

Mating Inlets/Plugs

Category / Description



[DIN Plug/Socket Overview complete](#)

4850, 3-pole, Plug, solder terminal, DIN Plug/Socket

4850.1310

[DIN Plug/Socket further types to 4850 DIN-Stecker, verschiedene](#)

Mouser Electronics

Authorized Distributor

Click to View Pricing, Inventory, Delivery & Lifecycle Information:

Schurter:

4850.23