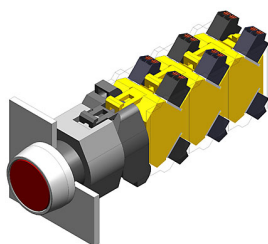


EAO – Your Expert Partner for Human Machine Interfaces

704.631.1 - Illuminated pushbutton actuator round

704.631.1 - Illuminated pushbutton actuator round



Attention: The preview is based on a sample product. This can differ from your current configuration.

Mounting

Mounting cut-out	Ø 22,3 mm
Design	raised

Front

Front dimension	Ø 29 mm
Front shape	round

Other Attributes

Weight	0,009 kg
--------	----------

Operating-/Indication part

Lens illumination	illuminative
-------------------	--------------

IP-Rating

Front protection	IP65
------------------	------

Actuator

Housing material	Plastic
Housing colour	grey
Switching action	Momentary

Switching element

max. number of switching elements	3
-----------------------------------	---

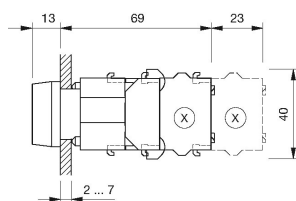
Function

Illuminated pushbutton

EAO – Your Expert Partner for Human Machine Interfaces

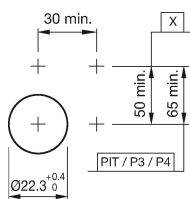
704.631.1 - Illuminated pushbutton actuator round

Dimensions



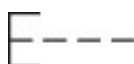
X = Screw terminal

Mounting cut-outs



PIT = Push-in terminal

Wiring diagram



Additional information

Max. 3 switching elements can be clipped on

Legend

Switching action: B = Momentary