

6

5

4

3

2

1

# MATERIAL AND FINISH

Insulator: Polycarbonate, UL-94V-0 rated  
Contacts: Brass, Tin Plated

## ELECTRICAL SPECIFICATIONS:

Current rating: 10 A/15 A  
Voltage rating: 250 VAC  
Insulation resistance: 100 Mohm min. at 500 VDC  
Dielectric withstanding voltage: 2000 VAC for one minute

## ORDERING CODE:

43R04-1  $\frac{2}{1}$   $\frac{2}{2}$

### 1) COLOR

1 = BLACK  
2 = GRAY

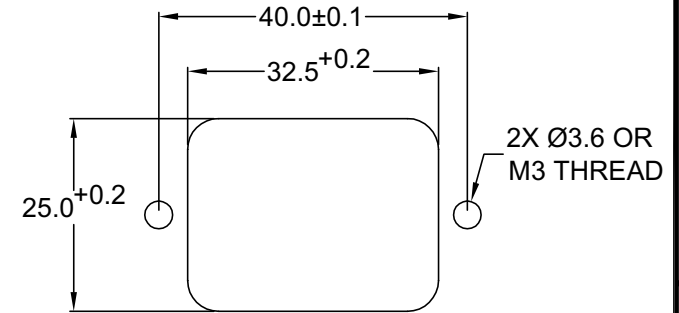
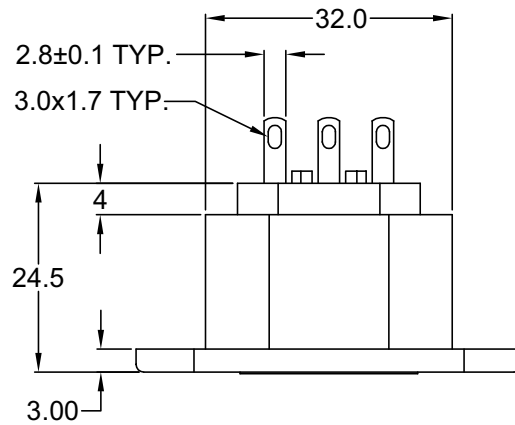
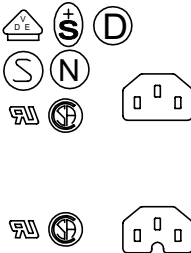
### 2) ELECTRICAL CIRCUIT CONFIGURATION

1 = 10A 250V 70°C

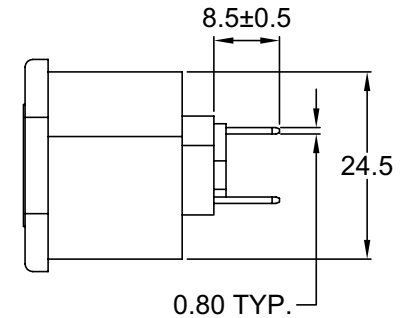
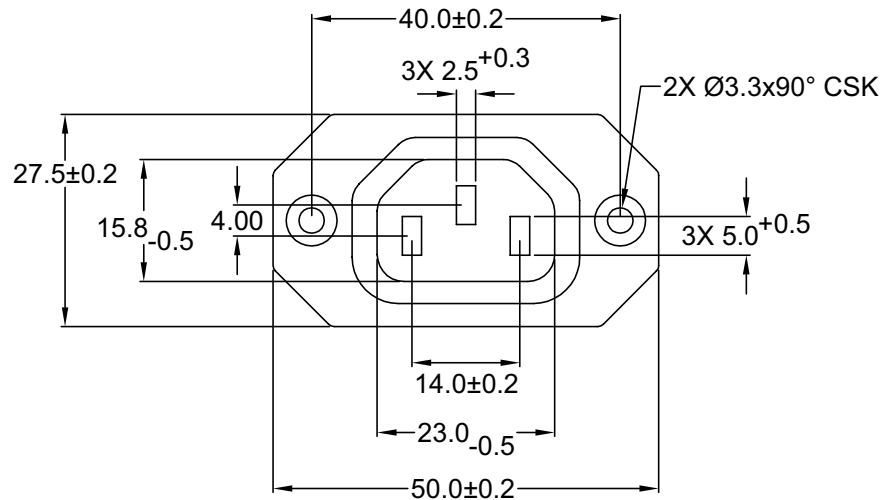
15A 250V 70°C  
2+GROUND

2 = 10A 250V 120°C

15A 250V 120°C  
2+GROUND



RECOMMENDED  
PANEL CUTOUT



REVISIONS

CHANGE

DATE

REV

CHNG

CHK

APPR

TOLERANCE  
UNLESS OTHERWISE SPECIFIED

X ± 1  
X.X ± 0.4  
X.XX ± 0.20

DRAWN BY GQ DATE: 10/05/01  
CHECK BY TD DATE: 10/09/01  
APPR BY PB DATE: 10/09/01

**Power Dynamics, Inc.**

Phone: 973 560-0019 Whippany, New Jersey Fax: 973 560-0076

PART: 10A/15A IEC 60320 APPL. OUTLET; SOLDER  
TERMINALS; SIDE FLANGE, PANEL MOUNT

PART #: 43R04-1X2X

SHEET  
1 of 1

SIZE: A  
SCALE: NTS  
ALL DIMENSIONS FOR REFERENCE ONLY  
DIMENSIONS ARE IN MILLIMETERS

REV:

6

5

4

3

2

1

6

5

4

3

2

1

# MATERIAL AND FINISH

Insulator: Polycarbonate, UL-94V-0 rated  
Contacts: Brass, Tin Plated

## ELECTRICAL SPECIFICATIONS:

Current rating: 10 A/15 A  
Voltage rating: 250 VAC  
Insulation resistance: 100 Mohm min. at 500 VDC  
Dielectric withstanding voltage: 2000 VAC for one minute

## ORDERING CODE:

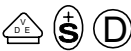
43R04-2  $\frac{1}{2}$   $\frac{2}{2}$

### 1) COLOR

1 = BLACK  
2 = GRAY

### 2) ELECTRICAL CIRCUIT CONFIGURATION

1 = 10A 250V 70°C



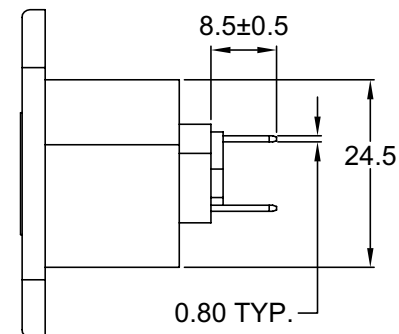
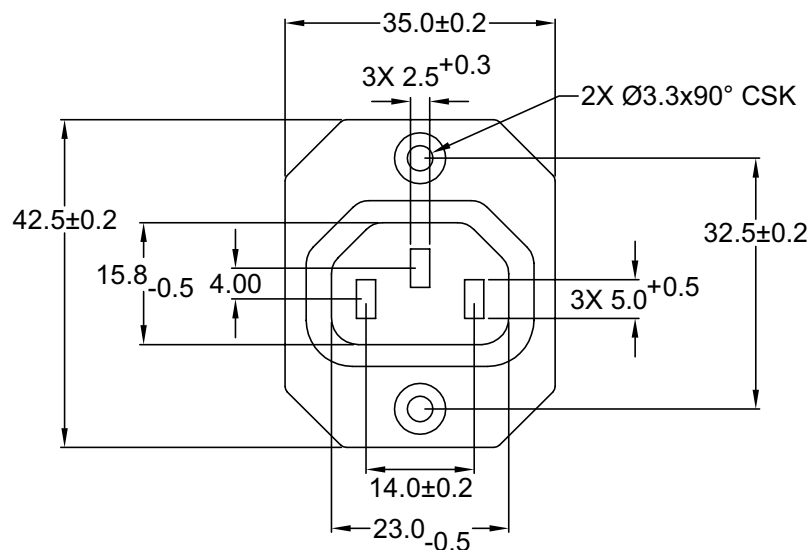
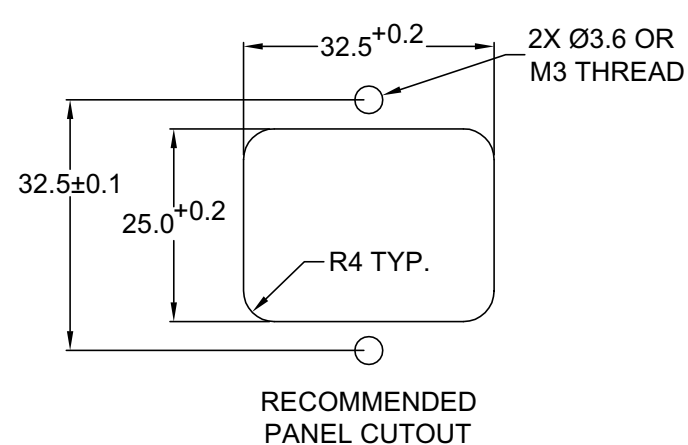
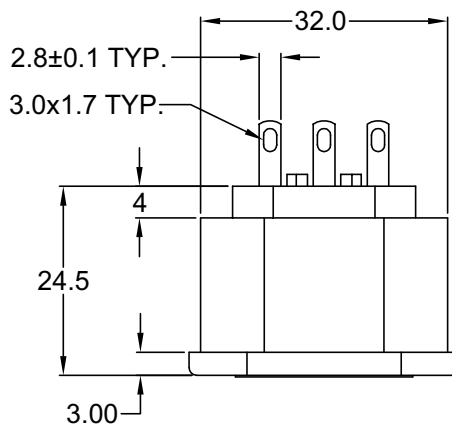
15A 250V 70°C  
2+GROUND



2 = 10A 250V 120°C



15A 250V 120°C  
2+GROUND



REVISIONS

CHANGE

DATE

REV

CHNG

CHK

APPR

TOLERANCE  
UNLESS OTHERWISE SPECIFIED

X ± 1  
X.X ± 0.4  
X.XX ± 0.20

DRAWN BY	GQ	DATE:	10/05/01
CHECK BY	TD	DATE:	10/10/01
APPR BY	PB	DATE:	10/10/01

**Power Dynamics, Inc.**

Phone: 973 560-0019 Whippany, New Jersey Fax: 973 560-0076

PART: 10A/15A IEC 60320 APPL. OUTLET; SOLDER  
TERMINALS; CROSS FLANGE, PANEL MOUNT

PART #: **43R04-2X2X**

SHEET  
1 of 1

SIZE: A  
SCALE: NTS  
ALL DIMENSIONS FOR REFERENCE ONLY  
DIMENSIONS ARE IN MILLIMETERS

REV:

6

5

4

3

2

1

6

5

4

3

2

1

# MATERIAL AND FINISH

Insulator: Polycarbonate, UL-94V-0 rated  
Contacts: Brass, Tin Plated

## ELECTRICAL SPECIFICATIONS:

Current rating: 10 A/15 A  
Voltage rating: 250 VAC  
Insulation resistance: 100 Mohm min. at 500 VDC  
Dielectric withstanding voltage: 2000 VAC for one minute

## ORDERING CODE:

43R04-3  $\frac{2}{1}$   $\frac{2}{2}$  -  $\frac{1}{3}$

### 1) COLOR

1 = BLACK  
2 = GRAY

### 2) ELECTRICAL CIRCUIT CONFIGURATION

1 = 10A 250V 70°C



15A 250V 70°C  
2+GROUND

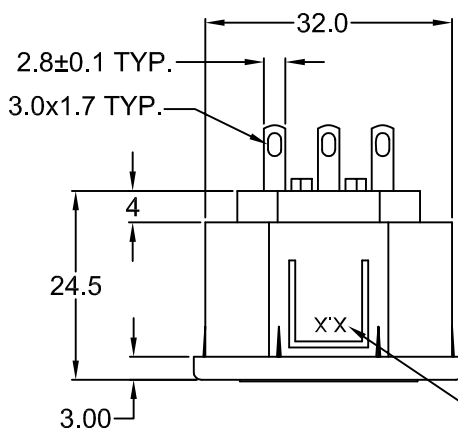


2 = 10A 250V 120°C

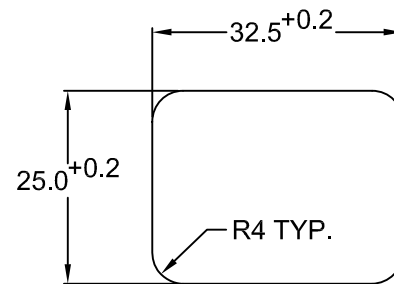
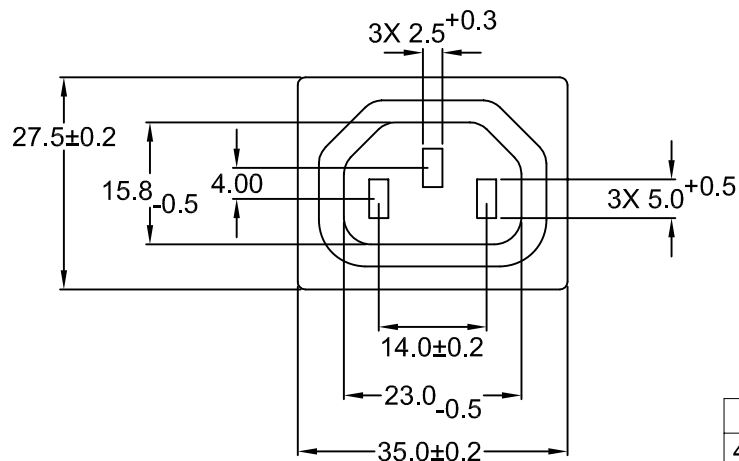
15A 250V 120°C  
2+GROUND



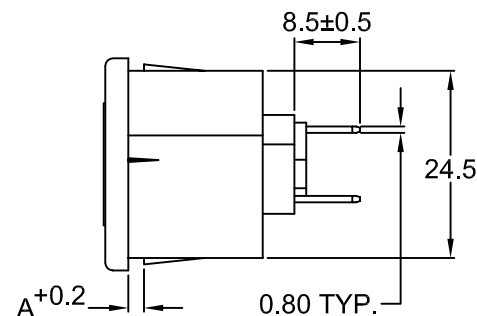
### 3) PANEL THICKNESS



REPLACE WITH  
CORRESPONDING  
PANEL THICKNESS



RECOMMENDED  
PANEL CUTOUT



P/N	A	MAX. PANEL THICKNESS
43R04-3X2X-150	1.5	1.5
43R04-3X2X-200	2.0	2.0
43R04-3X2X-250	2.5	2.5

ADDITIONAL PANEL THICKNESS  
AVAILABLE ON REQUEST

TOLERANCE  
UNLESS OTHERWISE SPECIFIED  
X ± 1  
X.X ± 0.4  
X.XX ± 0.20

**Power Dynamics, Inc.**

Phone: 973 560-0019 Whippany, New Jersey Fax: 973 560-0076

PART: 10A/15A IEC 60320 APPL. OUTLET; SOLDER  
TERMINALS; SNAP-IN, PANEL MOUNT

DRAWN BY	GQ	DATE:	10/05/01
CHECK BY	TD	DATE:	10/09/01
APPR BY	PB	DATE:	10/09/01

PART #:	43R04-3X2X-XXX	SHEET 1 of 1
SIZE:	A	ALL DIMENSIONS FOR REFERENCE ONLY DIMENSIONS ARE IN MILLIMETERS
SCALE:	NTS	REV:

6

5

4

3

2

1

REVISIONS

CHNG CHECK APPR

CHANGE

DATE

REV

A