

Features

- SMD filter consisting of coupled resonators with stepped impedances
- $\text{MgTiO}_3 - \text{CaTiO}_3$ ($\epsilon_r = 21$ / $TC_f = 0 \pm 10$ ppm/K) with a coating of copper ($10\mu\text{m}$) and tin ($>5\mu\text{m}$)
- Excellent reflow solderability, no migration effect due to copper/tin metallization

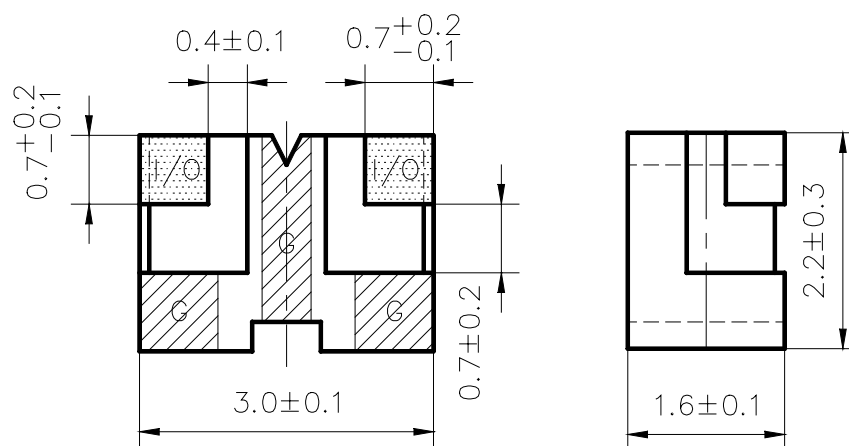
Index

- | | |
|--------|---|
| Page 2 | <ul style="list-style-type: none"> ● Component drawing ● Recommended footprint |
| Page 3 | <ul style="list-style-type: none"> ● Characteristics ● Maximum ratings ● Typical passband characteristic |
| Page 4 | <ul style="list-style-type: none"> ● Processing information ● Soldering requirements ● Delivery mode |

ISSUE DATE	10.06.03	ISSUE	P1	PUBLISHER	SAW MWC PD	PAGE	1/4
------------	----------	-------	----	-----------	------------	------	-----

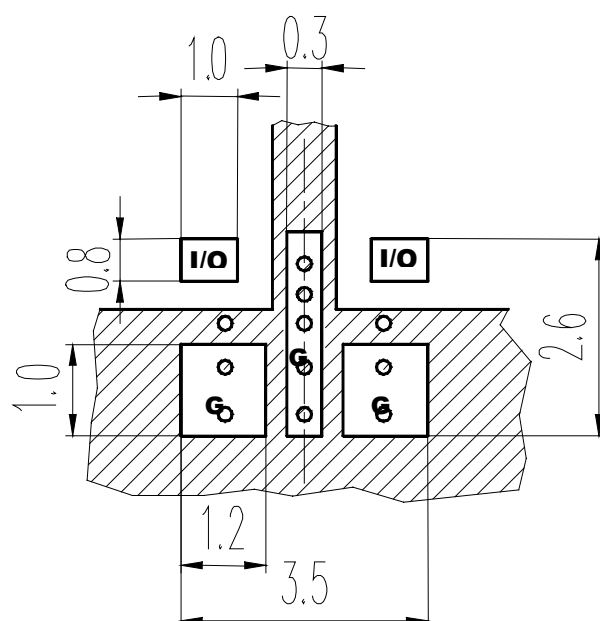
Preliminary Data Sheet

Component drawing



View from below onto the solder terminals and view from beside

Recommended footprint



□ soldering area
via diameter 0.3mm

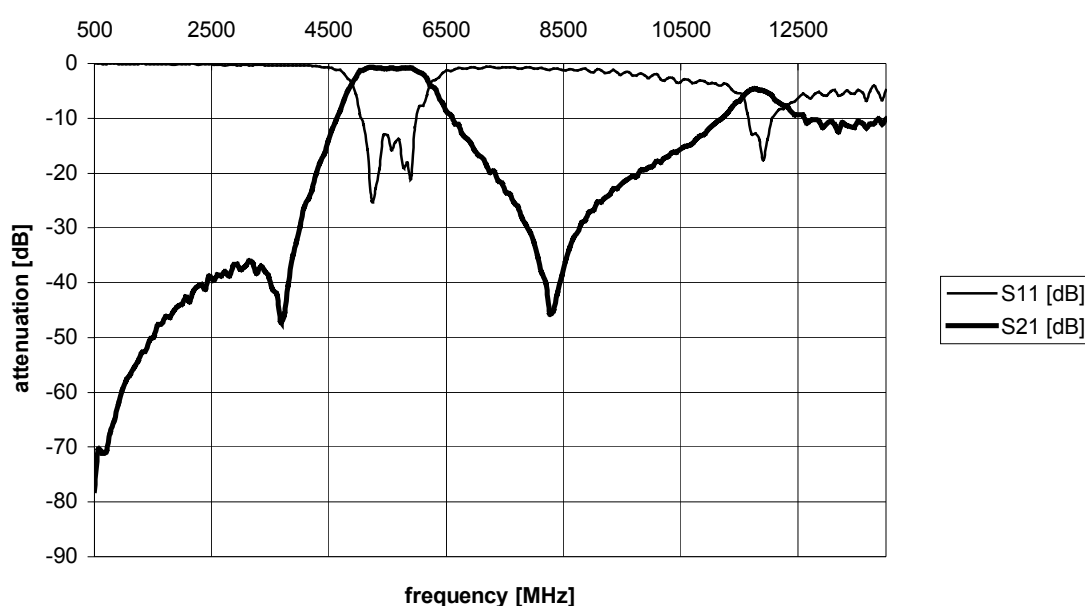
ISSUE DATE	10.06.03	ISSUE	P1	PUBLISHER	SAW MWC PD	PAGE	2/4
------------	----------	-------	----	-----------	------------	------	-----

Preliminary Data Sheet
Characteristics

		min.	typ.	max.	
Center frequency	f_c			5.5	GHz
Insertion loss [5150 – 5850] MHz	α_{IL}		0.9	1.0	dB
Passband [5150 – 5850] MHz	B	700			MHz
Amplitude ripple (peak - peak) [5150 – 5850] MHz	$\Delta\alpha$				dB
Standing wave ratio [5150 – 5850] MHz	SWR		1.8	2.0	
Impedance	Z		50		Ω
Power	P			1.0	W
	α				
	at DC to 2170 MHz	40	45		dB
	at 2400 to 2500 MHz	36	40		dB
	at 2400 to 3900 MHz	30	38		dB
	at 6800 MHz	10	14		dB

Maximum ratings

IEC climatic category (IEC 68-1)		- 40/+ 90/56	
Operating temperature	T_{op}	-40 / +85	°C

Typical passband characteristic


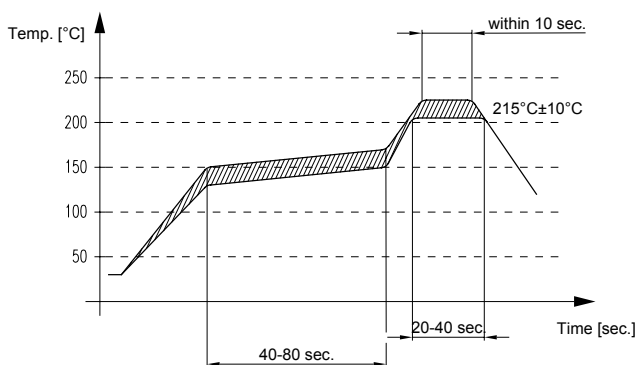
Preliminary Data Sheet
Processing information

ZNr.: 577 (FILT95_2)

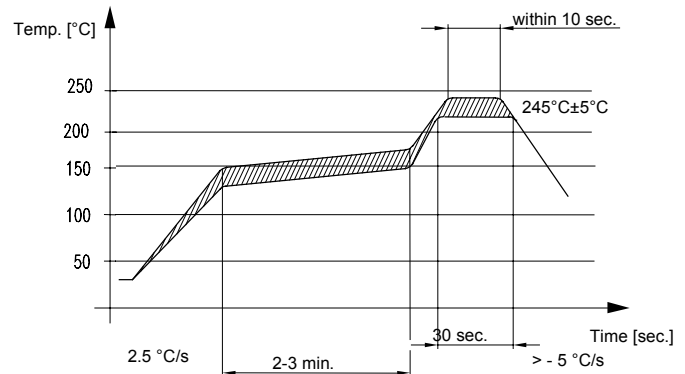
- Wettability acc. to IEC 68-2-58: $\geq 75\%$ (after aging)

Soldering requirements

	Profile for eutectic SnPb solder paste	Profile for leadfree solder paste	
Soldering type	reflow	reflow	
Maximum soldering temperature	235 (max. 2 sec.)	260 (max. 2 sec.)	°C
(measuring point on top surface of the component)	225 (max. 10 sec.)	250 (max. 10 sec.)	°C

Recommended soldering conditions (infrared):


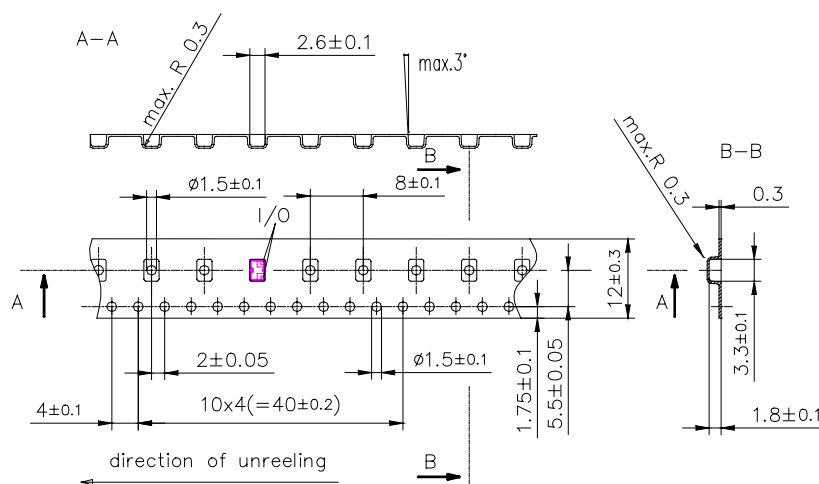
eutectic SnPb solder paste profile



leadfree solder paste profile

Delivery mode

- Blister tape acc. to IEC 286-3, PS, grey
- Pieces/tape: 4000



© EPCOS AG 2001. All Rights Reserved. Reproduction, publication and dissemination of this data sheet, enclosures hereto and the information contained therein without EPCOS' prior express consent is prohibited.

The information contained in this data sheet describes the type of component and shall not be considered as guaranteed characteristics. Purchase orders are subject to the General Conditions for the Supply of Products and Services of the Electrical and Electronics Industry recommended by the ZVEI (German Electrical and Electronic Manufacturers' Association), unless otherwise agreed.

ISSUE DATE	10.06.03	ISSUE	P1	PUBLISHER	SAW MWC PD	PAGE	4/4
------------	----------	-------	----	-----------	------------	------	-----