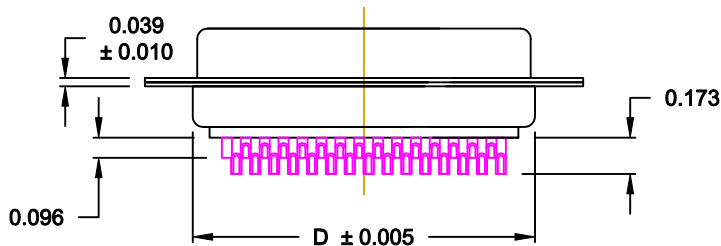
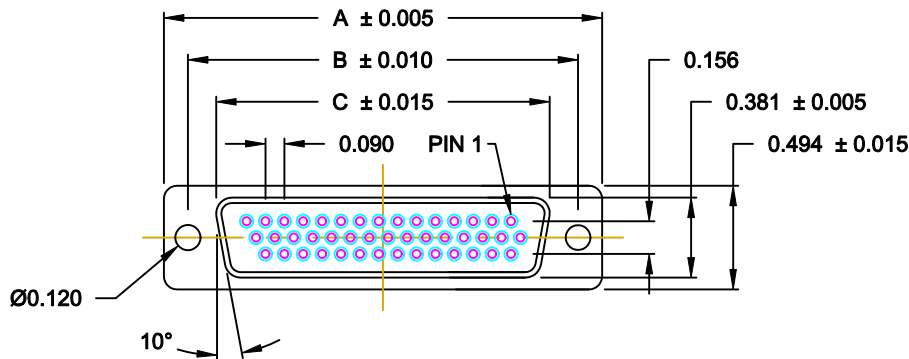
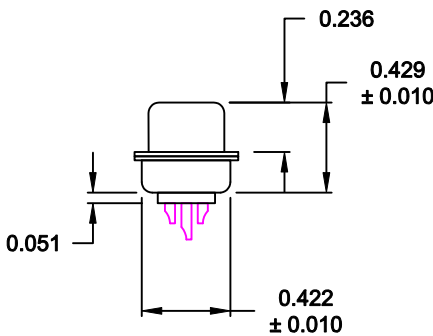


DESCRIPTION: FEMALE - HIGH DENSITY - MACHINED CONTACTS - SOLDER CUP



ACCEPTS 28 - 24 AWG WIRE

No. OF PINS	DIMENSIONS (IN.)			
	A	B	C	D
15	1.213	0.984	0.643	0.759
25	1.541	1.312	0.971	1.083
44	2.088	1.852	1.511	1.625



MATERIAL:

SHELL: STEEL MATERIAL, NICKEL FINISH
INSULATOR: PBT THERMOPLASTIC 30% GLASS FILLED, UL 94V-0 RATED, BLACK
CONTACT MATERIAL: BRASS
CONTACT FINISH: SELECTIVE GOLD FINISHED
SEALING MATERIAL: F04 FLEXIBLE ADHESIVE

ELECTRICAL:

CONTACT CURRENT RATING: 5 AMPS
CONTACT RESISTANCE: 30 Milliohms Max.
DIELECTRIC WITHSTANDING VOLTAGE: 1,000VAC Min.
INSULATION RESISTANCE: 5,000 Megohms Min.
TEMPERATURE RATING: -55° ~ +105° C

780-M YY-2 0 3 L YY 1

SERIES _____
MACHINED CONTACTS _____
POSITIONS _____
15 _____
26 _____
44 _____
GENDER _____
2 = FEMALE _____
TERMINATION _____
0 = SOLDER CUP _____
SHELL PLATING _____
3 = NICKEL _____
RoHS COMPLIANT _____
HARDWARE OPTIONS _____
00 = NO HARDWARE _____
01 = .065" CLINCH NUT (BOARD SIDE) _____
PLATING OPTIONS _____
1 = GOLD FLASH, ENTIRE CONTACT _____

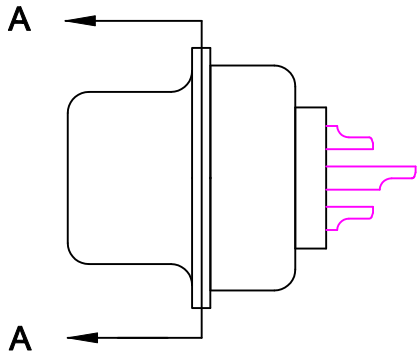
MEETS IP67 STANDARDS

(SEE PAGE 2 FOR SEALING DETAILS)

DO NOT SCALE FROM DRAWING

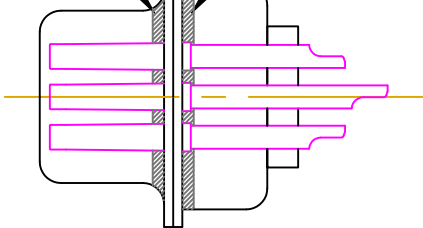
	THESE DRAWINGS AND SPECIFICATIONS ARE THE PROPERTY OF NorComp AND SHALL NOT BE REPRODUCED, COPIED OR USED AS THE BASIS FOR THE MANUFACTURE OF SALE OF APPARATUS WITHOUT WRITTEN PERMISSION.		DRAWN: C. SMITH		DATE: 03-13-07	
			CHECKED:		DATE:	
			SCALE: 1 : 1		SHEET 1 OF 2	
		DWG NO. 780-MYY-203L YY1		REV 2		

RoHS COMPLIANT



FRONT SEAL APPLIED BETWEEN
FRONT INSULATOR AND
FRONT METAL SHELL

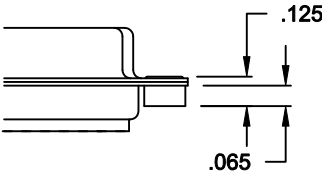
MIDDLE SEAL APPLIED BETWEEN
FRONT INSULATOR AND
BACK INSULATOR





DETAIL A-A

HARDWARE OPTION

01X 0.065" (BOARD SIDE) - CN1



DO NOT SCALE FROM DRAWING

	THESE DRAWINGS AND SPECIFICATIONS ARE THE PROPERTY OF NorComp AND SHALL NOT BE REPRODUCED, COPIED OR USED AS THE BASIS FOR THE MANUFACTURE OR SALE OF APPARATUS WITHOUT WRITTEN PERMISSION.	DRAWN: C. SMITH		DATE: 03-26-09		
		CHECKED:		DATE:		
		SCALE: 2.5 : 1		SHEET OF 2 2		REV 2
		DWG NO. 780-MYY-203LYY1				

Mouser Electronics

Authorized Distributor

Click to View Pricing, Inventory, Delivery & Lifecycle Information:

[NorComp:](#)

[780-M15-203L001](#) [780-M26-203L001](#) [780-M44-203L001](#) [780-M15-203L011](#)