

## Low-Noise, High-Precision, Programmable Linear Hall-Effect Sensor IC with Regulated Supply, Advanced Temperature Compensation, and High-Bandwidth (240 kHz) Analog Output

### FEATURES AND BENEFITS

- 240 kHz nominal bandwidth achieved via proprietary packaging and chopper stabilization techniques
- On-board supply regulator with reverse-battery protection
- Proprietary segmented linear temperature compensation (TC) technology provides a typical accuracy of 1% over the full operating temperature range
- Customer-programmable, high-resolution offset and sensitivity trim
- Factory-programmed sensitivity and quiescent output voltage TC with extremely stable temperature performance
- High-sensitivity Hall element for maximum accuracy
- Extremely low noise and high resolution achieved via proprietary Hall element and low-noise amplifier circuits

*Continued on the next page...*

### PACKAGE:

4-Pin SIP (suffix KT)

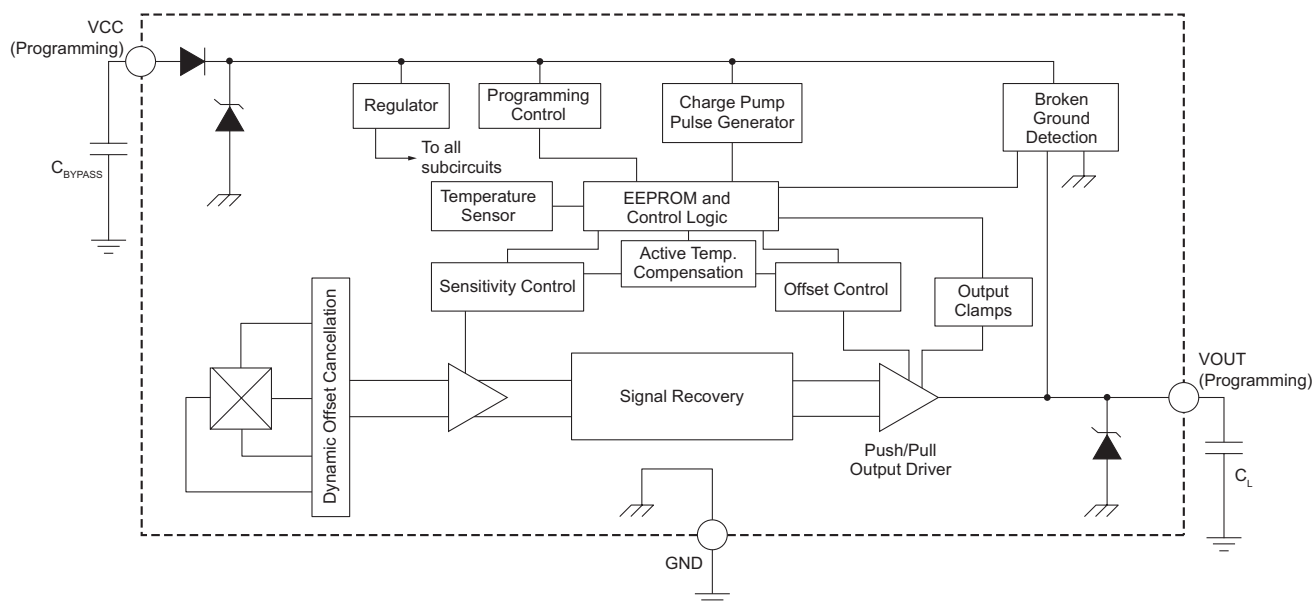


### DESCRIPTION

The Allegro™ A1367 programmable linear Hall-effect current sensor IC has been designed to achieve high accuracy and resolution without compromising bandwidth. This goal is achieved through new proprietary linearly interpolated temperature compensation technology that is programmed at the Allegro factory and provides sensitivity and offset that are virtually flat across the full operating temperature range. Temperature compensation is performed in the digital domain with integrated EEPROM technology while maintaining a 240 kHz bandwidth analog signal path, making this device ideal for HEV inverter, DC-to-DC converter, and electric power steering (EPS) applications.

This ratiometric Hall-effect sensor IC provides a voltage output that is proportional to the applied magnetic field. The customer can configure the sensitivity and quiescent (zero field) output voltage through programming on the VCC and output pins, to optimize performance in the end application. The quiescent output voltage is user-adjustable, around 50% (bidirectional configuration) or 10% (unidirectional configuration) of the supply voltage,  $V_{CC}$ , and the output sensitivity is adjustable within the range of 0.6 to 6.4 mV/G.

*Continued on the next page...*



Functional Block Diagram

## FEATURES AND BENEFITS (continued)

- Patented circuits suppress IC output spiking during fast current step inputs
- Open circuit detection on ground pin (broken wire)
- Selectable sensitivity range between 0.6 and 6.4 mV/G through use of coarse sensitivity program bits
- User-selectable ratiometric behavior of sensitivity, quiescent voltage, and clamps (ratiometry can be disabled), for simple interface with application A-to-D converter (ADC)
- Precise recoverability after temperature cycling
- Output voltage clamps provide short-circuit diagnostic capabilities
- Wide ambient temperature range:  $-40^{\circ}\text{C}$  to  $150^{\circ}\text{C}$
- Immune to mechanical stress
- Extremely thin package: 1 mm case thickness
- AEC-Q100 automotive qualified

## DESCRIPTION (continued)

The sensor IC incorporates a highly sensitive Hall element with a BiCMOS interface integrated circuit that employs a low-noise small-signal high-gain amplifier, a clamped low-impedance output stage, and a proprietary, high-bandwidth dynamic offset cancellation technique. These advances in Hall-effect technology work together to provide an industry-leading sensing resolution at the full 240 kHz bandwidth. Broken ground wire detection as well as user-selectable output voltage clamps also are built into this device for high reliability in automotive applications.

Device parameters are specified across an extended ambient temperature range:  $-40^{\circ}\text{C}$  to  $150^{\circ}\text{C}$ . The A1367 sensor IC is provided in an extremely thin case (1 mm thick), 4-pin SIP (single in-line package, suffix KT) that is lead (Pb) free, with 100% matte-tin leadframe plating.

## SELECTION GUIDE

Part Number	Package	Packing [1]	Sensitivity Range [2] (mV/G)
A1367LKTTN-1B-T	4-pin SIP	4000 pieces per 13-in. reel	SENS_COARSE 00: 0.6 to 1.3
A1367LKTTN-2B-T	4-pin SIP	4000 pieces per 13-in. reel	SENS_COARSE 01: 1.3 to 2.9
A1367LKTTN-2U-T	4-pin SIP	4000 pieces per 13-in. reel	SENS_COARSE 01: 1.3 to 2.9
A1367LKTTN-5B-T	4-pin SIP	4000 pieces per 13-in. reel	SENS_COARSE 10: 2.9 to 6.4



[1] Contact Allegro for additional packing options

[2] Allegro recommends against changing Coarse Sensitivity settings when programming devices that will be used in production. Each A1367 has been factory temperature compensated at a specific sensitivity range, and changing the coarse bits setting could cause sensitivity drift through temperature range ( $\Delta\text{Sens}_{\text{TC}}$ ) to exceed specified limits.

## Table of Contents

Specifications	3	Programming Guidelines	20
Absolute Maximum Ratings	3	Serial Communication	20
Thermal Characteristics	3	Writing Access Code	22
Pinout Diagram and Terminal List Table	4	Writing to Volatile Memory	22
Operating Characteristics	5	Writing to Nonvolatile Memory	22
Characteristic Performance Data	8	Reading from EEPROM or Volatile Memory	22
Characteristic Definitions	11	Enabling/Disabling Ratiometry	24
Functional Description	16	EEPROM Cell Organization	24
Programming Sensitivity and Quiescent		Diagnostic Clamps	25
Voltage Output	16	EEPROM Error Checking and Correction (ECC)	25
Coarse Sensitivity	16	Detecting ECC Error	25
Memory-Locking Mechanisms	16	Package Outline Drawing	26
Power-On Reset (POR) Operation	17		
Detecting Broken Ground Wire	18		
Chopper Stabilization Technique	19		

## SPECIFICATIONS

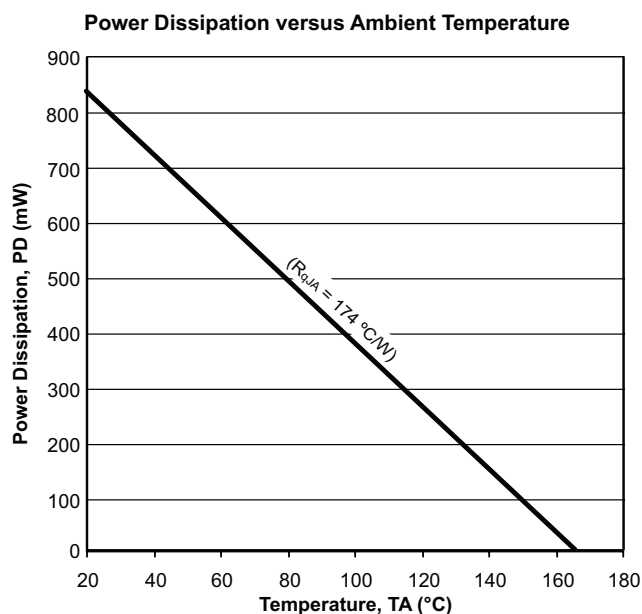
### ABSOLUTE MAXIMUM RATINGS

Characteristic	Symbol	Notes	Rating	Unit
Forward Supply Voltage	$V_{CC}$		15	V
Reverse Supply Voltage	$V_{RCC}$	$T_J(\text{max})$ should not be exceeded	-15	V
Forward Output Voltage	$V_{OUT}$	$V_{OUT} < V_{CC} + 2 \text{ V}$	16	V
Reverse Output Voltage	$V_{ROUT}$	Difference between $V_{CC}$ and output should not exceed 20 V	-6	V
Output Source Current	$I_{OUT(\text{source})}$	VOUT to GND	2.8	mA
Output Sink Current	$I_{OUT(\text{sink})}$	VCC to VOUT	10	mA
Maximum Number of EEPROM Write Cycles	EEPROM <sub>w(max)</sub>		100	cycle
Operating Ambient Temperature	$T_A$	L temperature range	-40 to 150	°C
Storage Temperature	$T_{\text{stg}}$		-65 to 165	°C
Maximum Junction Temperature	$T_J(\text{max})$		165	°C

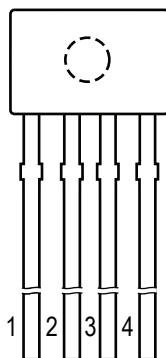
### THERMAL CHARACTERISTICS: May require derating at maximum conditions; see application information

Characteristic	Symbol	Test Conditions*	Value	Unit
Package Thermal Resistance	$R_{\theta JA}$	On 1-layer PCB with exposed copper limited to solder pads	174	°C/W

\*Additional thermal information available on the Allegro website



## PINOUT DIAGRAM AND TERMINAL LIST TABLE



**KT Package Pinout Diagram**  
(Ejector pin mark on opposite side)

**Terminal List Table**

Number	Name	Function
1	VCC	Input Power Supply, use bypass capacitor to connect to ground; also used for programming
2	VOUT	Output Signal, also used for programming
3	NC	No connection; connect to GND for optimal ESD performance
4	GND	Ground

**OPERATING CHARACTERISTICS:** Valid through the full operating temperature range,  $T_A$ ,  $C_{BYPASS} = 0.1 \mu F$ ,  $V_{CC} = 5 V$ , unless otherwise specified

Characteristic	Symbol	Test Conditions	Min.	Typ.	Max.	Unit [1]
<b>ELECTRICAL CHARACTERISTICS</b>						
Supply Voltage	$V_{CC}$		4.5	5	5.5	V
Supply Current	$I_{CC}$	No load on VOUT	–	11	16.25	mA
Power-On Time [2]	$t_{PO}$	$T_A = 25^\circ C$ , $C_{BYPASS} = \text{open}$ , $C_L = 1 \text{ nF}$ , Sens = 2 mV/G, constant magnetic field of 400 G	–	80	–	$\mu s$
Temperature Compensation Power-On Time [2]	$t_{TC}$	$T_A = 150^\circ C$ , $C_{BYPASS} = \text{open}$ , $C_L = 1 \text{ nF}$ , Sens = 2 mV/G, constant magnetic field of 400 G	–	146	–	$\mu s$
Power-On Reset Voltage [2]	$V_{PORH}$	$T_A = 25^\circ C$ , $V_{CC}$ rising	3.75	4	4.2	V
	$V_{PORL}$	$T_A = 25^\circ C$ , $V_{CC}$ falling	–	3.5	–	V
Power-On Reset Hysteresis	$V_{PORHYS}$	$T_A = 25^\circ C$	–	500	–	mV
Power-On Reset Release Time [2]	$t_{PORR}$	$T_A = 25^\circ C$ , $V_{CC}$ rising	–	32	–	$\mu s$
Power-On Reset Analog Delay	$t_{PORA}$	$T_A = 25^\circ C$ , $V_{CC}$ rising	–	46	–	$\mu s$
Supply Zener Clamp Voltage	$V_Z$	$T_A = 25^\circ C$ , $I_{CC} = 30 \text{ mA}$	6.5	7.5	–	V
Internal Bandwidth	$BW_i$	Small signal –3 dB, $C_L = 1 \text{ nF}$ , $T_A = 25^\circ C$	–	240	–	kHz
Chopping Frequency [3]	$f_C$	$T_A = 25^\circ C$	–	1	–	MHz
<b>OUTPUT CHARACTERISTICS</b>						
Propagation Delay Time [2]	$t_{pd}$	$T_A = 25^\circ C$ , magnetic field step of 400 G, $C_L = 1 \text{ nF}$ , Sens = 2 mV/G	–	1.1	–	$\mu s$
Rise Time [2]	$t_r$	$T_A = 25^\circ C$ , magnetic field step of 400 G, $C_L = 1 \text{ nF}$ , Sens = 2 mV/G	–	2.4	–	$\mu s$
Response Time [2]	$t_{RESPONSE}$	$T_A = 25^\circ C$ , magnetic field step of 400 G, $C_L = 1 \text{ nF}$ , Sens = 2 mV/G, measurement of 80% input to 80% output	–	1.8	–	$\mu s$
		$T_A = 25^\circ C$ , magnetic field step of 400 G, $C_L = 1 \text{ nF}$ , Sens = 2 mV/G, measurement of 90% input to 90% output	–	2.2	–	$\mu s$
Delay to Clamp [2]	$t_{CLP}$	$T_A = 25^\circ C$ , magnetic field step from 800 to 1200 G, $C_L = 1 \text{ nF}$ , Sens = 2 mV/G	–	10	–	$\mu s$
Output Voltage Clamp [4]	$V_{CLP(HIGH)}$	$T_A = 25^\circ C$ , $R_{L(PULLDOWN)} = 10 \text{ k}\Omega$ to GND	4.55	–	4.85	V
	$V_{CLP(LOW)}$	$T_A = 25^\circ C$ , $R_{L(PULLUP)} = 10 \text{ k}\Omega$ to VCC	0.15	–	0.45	V
Output Saturation Voltage [2]	$V_{SAT(HIGH)}$	$T_A = 25^\circ C$ , $R_{L(PULLDOWN)} = 10 \text{ k}\Omega$ to GND	4.7	–	–	V
	$V_{SAT(LOW)}$	$T_A = 25^\circ C$ , $R_{L(PULLDOWN)} = 10 \text{ k}\Omega$ to VCC	–	–	400	mV
Broken Wire Voltage [2]	$V_{BRK(HIGH)}$	$T_A = 25^\circ C$ , $R_{L(PULLUP)} = 10 \text{ k}\Omega$ to VCC	–	$V_{CC}$	–	V
	$V_{BRK(LOW)}$	$T_A = 25^\circ C$ , $R_{L(PULLDOWN)} = 10 \text{ k}\Omega$ to GND	–	100	–	mV
Noise [5]	$V_N$	$T_A = 25^\circ C$ , $C_L = 1 \text{ nF}$ , $BW_f = BW_i$	–	1.4	–	mG/ $\sqrt{\text{Hz}}$
		$T_A = 25^\circ C$ , $C_L = 1 \text{ nF}$ , Sens = 2 mV/G, $BW_f = BW_i$	–	12.6	–	mV <sub>p-p</sub>
		$T_A = 25^\circ C$ , $C_L = 1 \text{ nF}$ , Sens = 2 mV/G, $BW_f = BW_i$	–	2.1	–	mV <sub>RMS</sub>

Continued on the next page...

**OPERATING CHARACTERISTICS (continued):** Valid through the full operating temperature range,  $T_A$ ,  $C_{BYPASS} = 0.1 \mu F$ ,  $V_{CC} = 5 V$ , unless otherwise specified

Characteristic	Symbol	Test Conditions	Min.	Typ.	Max.	Unit [1]
<b>OUTPUT CHARACTERISTICS (continued)</b>						
DC Output Resistance	$R_{OUT}$		–	3	–	$\Omega$
Output Load Resistance	$R_{L(PULLUP)}$	VOUT to VCC	4.7	–	–	k $\Omega$
	$R_{L(PULLDOWN)}$	VOUT to GND	4.7	–	–	k $\Omega$
Output Load Capacitance [6]	$C_L$	VOUT to GND	–	1	10	nF
Output Slew Rate [7]	SR	Sens = 2 mV/G, $C_L = 1$ nF	–	480	–	V/ms
<b>QUIESCENT VOLTAGE OUTPUT (<math>V_{OUT(Q)}</math>) [2]</b>						
Initial Unprogrammed Quiescent Voltage Output [2][8]	$V_{OUT(QBI)init}$	$T_A = 25^\circ C$	2.4	2.5	2.6	V
	$V_{OUT(QU)init}$	$T_A = 25^\circ C$	0.45	0.5	0.55	V
Quiescent Voltage Output Programming Range [2][4][9]	$V_{OUT(QBI)PR}$	$T_A = 25^\circ C$	2.35	–	2.65	V
	$V_{OUT(QU)PR}$	$T_A = 25^\circ C$	0.4	–	0.6	V
Quiescent Voltage Output Programming Bits [10]	QVO		–	9	–	bit
Average Quiescent Voltage Output Programming Step Size [2][11][12]	$Step_{VOUT(Q)}$	$T_A = 25^\circ C$	0.95	1.15	1.4	mV
Quiescent Voltage Output Programming Resolution [2][13]	$Err_{PGVOUT(Q)}$	$T_A = 25^\circ C$	–	$\pm 0.5 \times Step_{VOUT(Q)}$	–	mV
<b>SENSITIVITY (Sens) [2]</b>						
Initial Unprogrammed Sensitivity [8]	$Sens_{init}$	SENS_COARSE = 00, $T_A = 25^\circ C$	–	1	–	mV/G
		SENS_COARSE = 01, $T_A = 25^\circ C$	–	2.2	–	mV/G
		SENS_COARSE = 10, $T_A = 25^\circ C$	–	4.7	–	mV/G
Sensitivity Programming Range [4][9]	$Sens_{PR}$	SENS_COARSE = 00, $T_A = 25^\circ C$	0.6	–	1.3	mV/G
		SENS_COARSE = 01, $T_A = 25^\circ C$	1.3	–	2.9	mV/G
		SENS_COARSE = 10, $T_A = 25^\circ C$	2.9	–	6.4	mV/G
Coarse Sensitivity Programming Bits [14]	SENS_COARSE		–	2	–	bit
Fine Sensitivity Programming Bits [10]	SENS_FINE		–	9	–	bit
Average Fine Sensitivity and Temperature Compensation Programming Step Size [2][14][15]	$Step_{SENS}$	SENS_COARSE = 00, $T_A = 25^\circ C$	2.4	3.2	4.1	$\mu V/G$
		SENS_COARSE = 01, $T_A = 25^\circ C$	5	6.6	8.5	$\mu V/G$
		SENS_COARSE = 10, $T_A = 25^\circ C$	11	14.2	18	$\mu V/G$
Sensitivity Programming Resolution [2][13]	$Err_{PGSENS}$	$T_A = 25^\circ C$	–	$\pm 0.5 \times Step_{SENS}$	–	$\mu V/G$
<b>FACTORY-PROGRAMMED SENSITIVITY TEMPERATURE COEFFICIENT</b>						
Sensitivity Temperature Coefficient [2]	$TC_{SENS}$	$T_A = 150^\circ C$ , $T_A = -40^\circ C$ , calculated relative to $25^\circ C$	–	0	–	%/ $^\circ C$
Sensitivity Drift Through Temperature Range [2][9][15]	$\Delta Sens_{TC}$	$T_A = 25^\circ C$ to $150^\circ C$	–2	–	2	%
		$T_A = -40^\circ C$ to $25^\circ C$	–3.5	–	3.5	%
Average Sensitivity Temperature Compensation Step Size	$Step_{SENSTC}$	$T_A = -40^\circ C$ to $150^\circ C$	$2 \times Step_{SENS}$			$\mu V/G$

Continued on the next page...

**OPERATING CHARACTERISTICS (continued):** Valid through the full operating temperature range,  $T_A$ ,  $C_{BYPASS} = 0.1 \mu F$ ,  $V_{CC} = 5 V$ , unless otherwise specified

Characteristic	Symbol	Test Conditions	Min.	Typ.	Max.	Unit [1]
<b>FACTORY-PROGRAMMED QUIESCENT VOLTAGE OUTPUT TEMPERATURE COEFFICIENT</b>						
Quiescent Voltage Output Temperature Coefficient [2]	$TC_{QVO}$	$T_A = 150^\circ C$ , $T_A = -40^\circ C$ , calculated relative to $25^\circ C$	–	0	–	mV/ $^\circ C$
Quiescent Voltage Output Drift Through Temperature Range [2][9][15]	$\Delta V_{OUT(Q)TC}$	$T_A = 25^\circ C$ to $150^\circ C$ ; SENS_COARSE = 00 or 01	–10	–	10	mV
		$T_A = 25^\circ C$ to $150^\circ C$ ; SENS_COARSE = 10	–15	–	15	mV
		$T_A = -40^\circ C$ to $25^\circ C$	–30	–	30	mV
Average Quiescent Voltage Output Temperature Compensation Step Size	Step $_{QVOTC}$		–	2.3	–	mV
<b>LOCK BIT PROGRAMMING</b>						
EEPROM Lock Bit	EELOCK		–	1	–	bit
<b>ERROR COMPONENTS</b>						
Linearity Sensitivity Error [2][16]	Lin $_{ERR}$		–1	< $\pm 0.25$	1	%
Symmetry Sensitivity Error [2]	Sym $_{ERR}$		–1	< $\pm 0.25$	1	%
Ratiometry Quiescent Voltage Output Error [2][17]	Rat $_{ERRVOUT(Q)}$	Through supply voltage range (relative to $V_{CC} = 5 V \pm 5\%$ ); SENS_COARSE = 00	–0.8	$\pm 0.15$	0.8	%
		Through supply voltage range (relative to $V_{CC} = 5 V \pm 5\%$ ); SENS_COARSE = 01	–0.9	$\pm 0.15$	0.9	%
		Through supply voltage range (relative to $V_{CC} = 5 V \pm 5\%$ ); SENS_COARSE = 10	–1.2	$\pm 0.25$	1.2	%
Ratiometry Sensitivity Error [2][17]	Rat $_{ERRSens}$	Through supply voltage range (relative to $V_{CC} = 5 V \pm 5\%$ )	–1	< $\pm 0.5$	1	%
Ratiometry Clamp Error [2][18]	Rat $_{ERRCLP}$	Through supply voltage range (relative to $V_{CC} = 5 V \pm 5\%$ ), $T_A = 25^\circ C$	–	< $\pm 1$	–	%
Sensitivity Drift Due to Package Hysteresis [2]	$\Delta Sens_{PKG}$	$T_A = 25^\circ C$ , after temperature cycling, $25^\circ C$ to $150^\circ C$ and back to $25^\circ C$	–	$\pm 0.6$	–	%
Sensitivity Drift Over Lifetime [19]	$\Delta Sens_{LIFE}$	$T_A = 25^\circ C$ , shift after AEC Q100 grade 0 qualification testing	–	$\pm 1$	–	%

[1] 1 G (gauss) = 0.1 mT (millitesla).

[2] See Characteristic Definitions section.

[3]  $f_C$  varies up to approximately  $\pm 20\%$  over the full operating ambient temperature range,  $T_A$ , and process.

[4] Sens,  $V_{OUT(Q)}$ ,  $V_{CLP(LOW)}$ , and  $V_{CLP(HIGH)}$  scale with  $V_{CC}$  due to ratiometry.

[5] Noise, measured in mV $_{PP}$  and in mV $_{RMS}$ , is dependent on the sensitivity of the device.

[6] Output stability is maintained for capacitive loads as large as 10 nF.

[7] High-to-low transition of output voltage is a function of external load components and device sensitivity.

[8] Raw device characteristic values before any programming.

[9] Exceeding the specified ranges will cause sensitivity and Quiescent Voltage Output drift through the temperature range to deteriorate beyond the specified values.

[10] Refer to Functional Description section.

[11] Step size is larger than required, in order to provide for manufacturing spread. See Characteristic Definitions section.

[12] Non-ideal behavior in the programming DAC can cause the step size at each significant bit rollover code to be greater than twice the maximum specified value of Step $_{VOUT(Q)}$  or Step $_{SENS}$ .

[13] Overall programming value accuracy. See Characteristic Definitions section.

[14] Each A1367 part number is factory programmed and temperature compensated at a different coarse sensitivity setting. Changing coarse bits setting could cause sensitivity drift through temperature range,  $\Delta Sens_{TC}$ , to exceed specified limits.

[15] Allegro will be testing and temperature compensating each device at  $150^\circ C$ . Allegro will not be testing devices at  $-40^\circ C$ . Temperature compensation codes will be applied based on characterization data.

[16] Linearity applies to output voltage ranges of  $\pm 2 V$  from the quiescent output for bidirectional devices.

[17] Percent change from actual value at  $V_{CC} = 5 V$ , for a given temperature, through the supply voltage operating range.

[18] Percent change from actual value at  $V_{CC} = 5 V$ ,  $T_A = 25^\circ C$ , through the supply voltage operating range.

[19] Based on characterization data obtained during standardized stress test for Qualification of Integrated Circuits. Cannot be guaranteed. Drift is a function of customer application conditions. Please contact Allegro MicroSystems for further information.

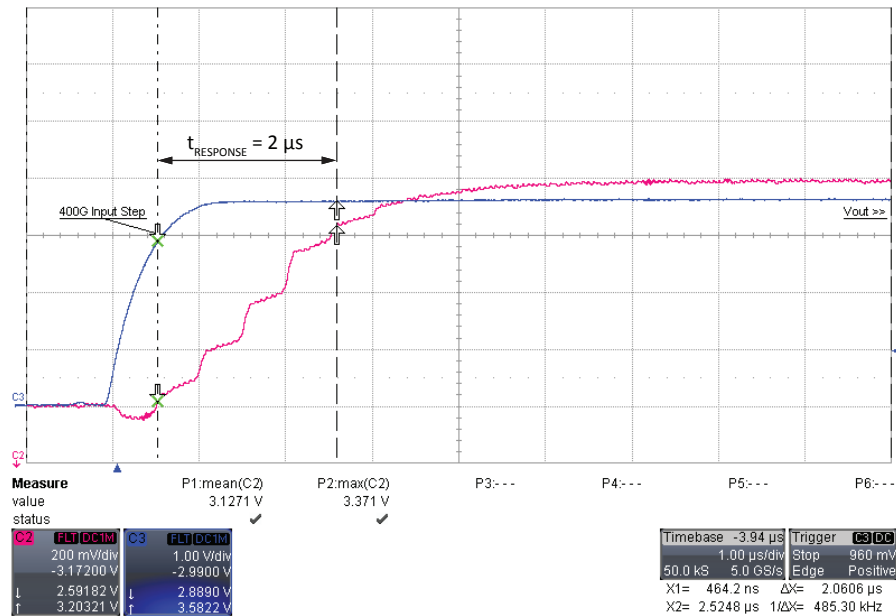


## CHARACTERISTIC PERFORMANCE DATA

### Response Time ( $t_{\text{RESPONSE}}$ )

400 G Excitation Signal with 10%-90% rise time = 1  $\mu\text{s}$

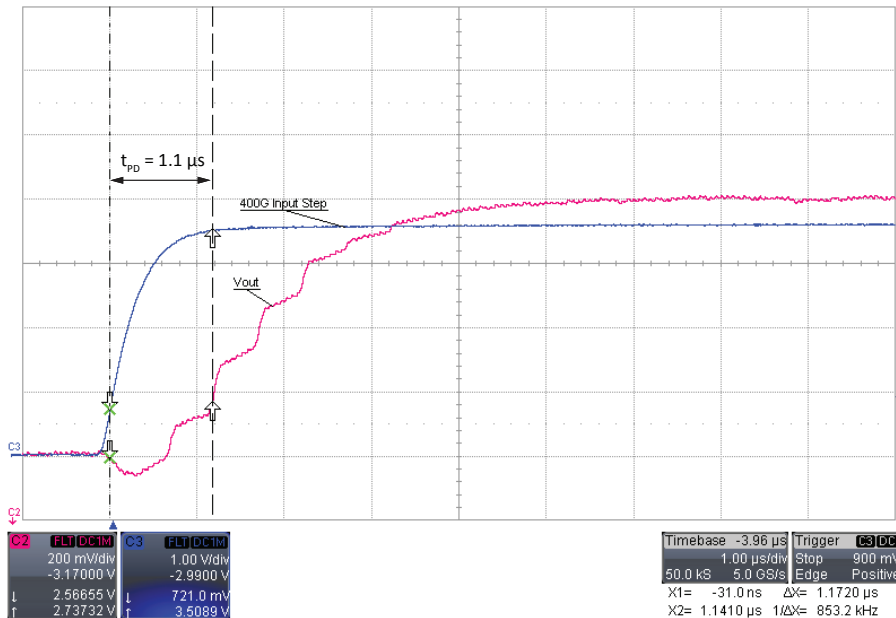
Response time (80% input to 80% output) = 2.06  $\mu\text{s}$ , Sensitivity = 2 mV/G,  $C_{\text{BYPASS}} = 0.1 \mu\text{F}$ ,  $C_L = 1 \text{ nF}$



### Propagation Delay ( $t_{\text{PD}}$ )

400 G Excitation Signal with 10%-90% rise time = 1  $\mu\text{s}$

Sensitivity = 2 mV/G,  $C_{\text{BYPASS}} = 0.1 \mu\text{F}$ ,  $C_L = 1 \text{ nF}$



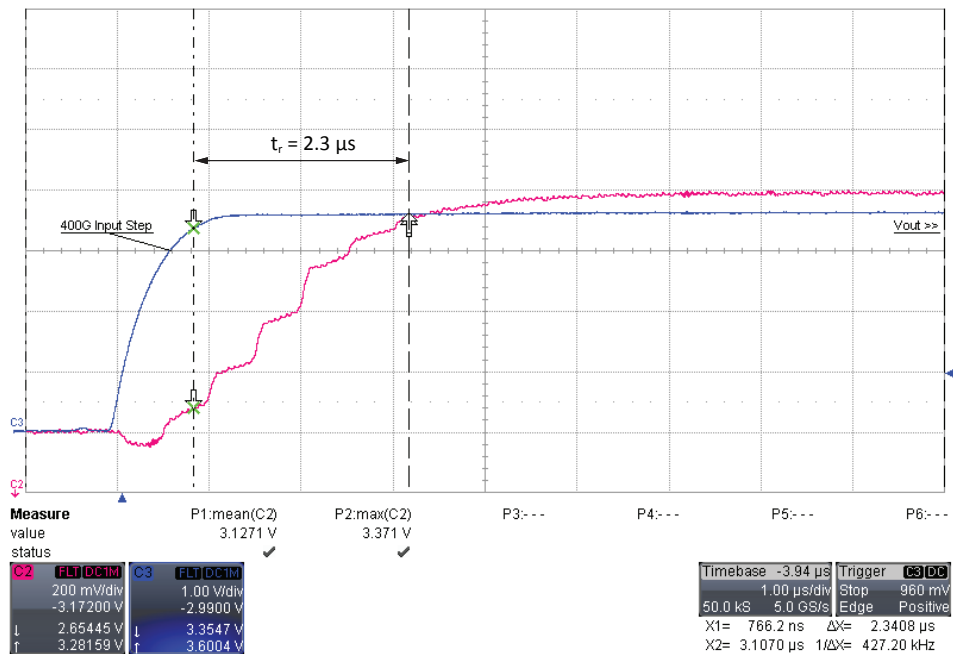


### CHARACTERISTIC PERFORMANCE DATA (continued)

#### Rise Time ( $t_r$ )

400 G Excitation Signal with 10%-90% rise time = 1  $\mu$ s

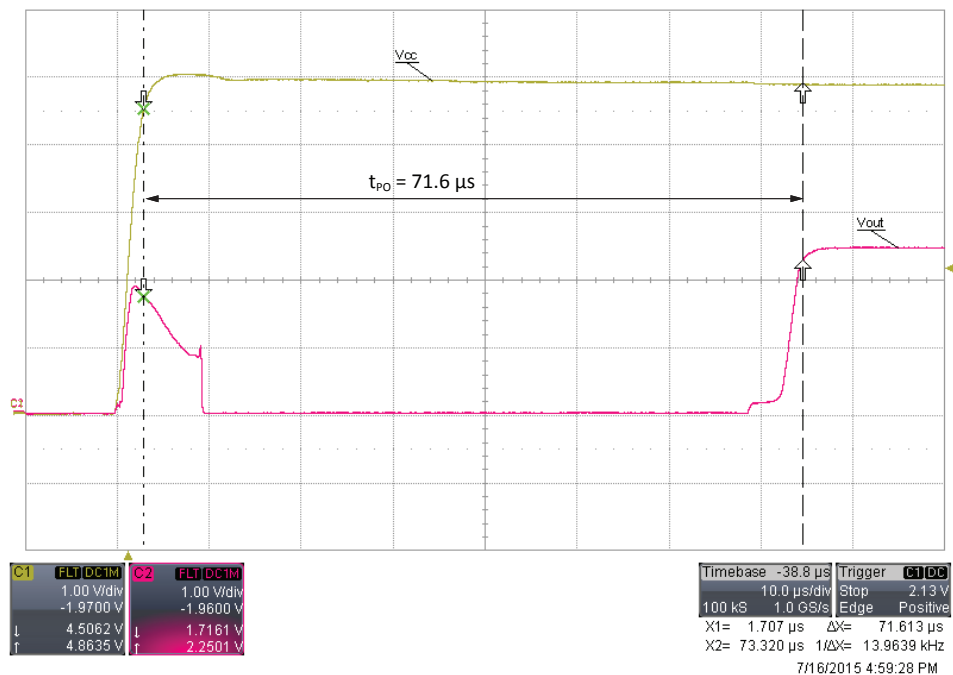
Sensitivity = 2 mV/G,  $C_{\text{BYPASS}} = 0.1 \mu\text{F}$ ,  $C_L = 1 \text{ nF}$

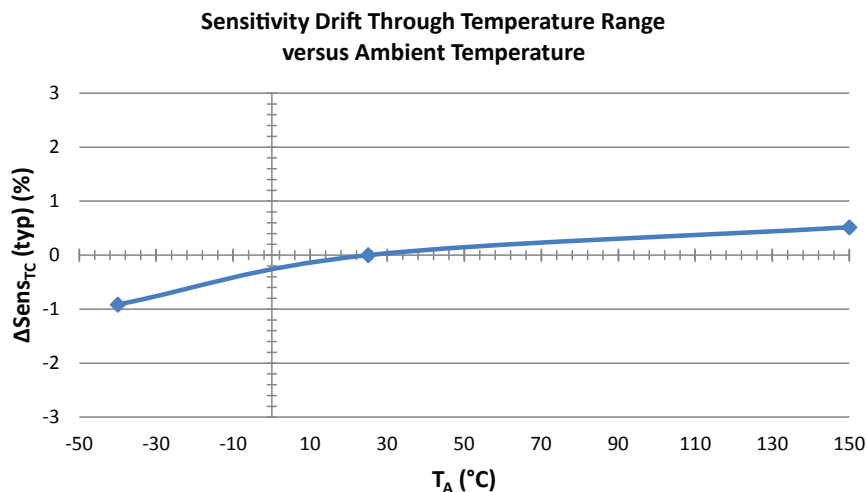
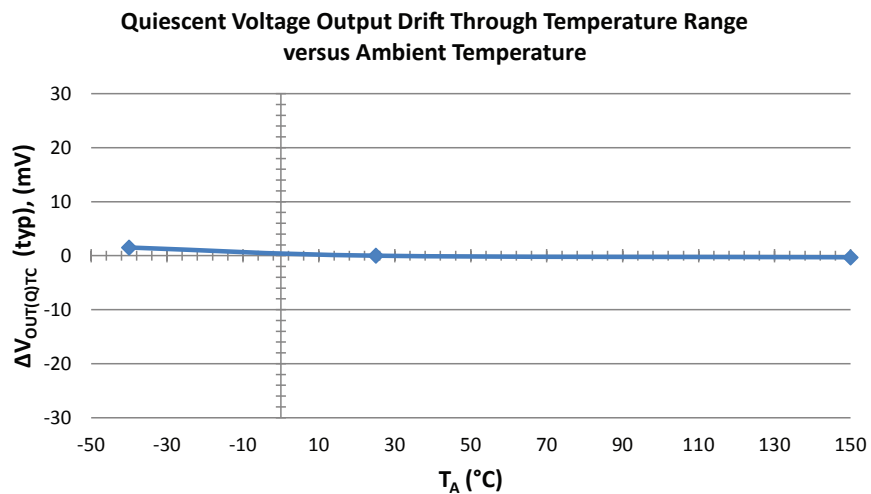


#### Power-On Time ( $t_{PO}$ )

400 G Constant Excitation Signal with  $t_{PO} = 81 \mu\text{s}$

Sensitivity = 2 mV/G,  $C_{\text{BYPASS}} = \text{Open}$ ,  $C_L = 1 \text{ nF}$



**CHARACTERISTIC PERFORMANCE DATA (continued)**

## CHARACTERISTIC DEFINITIONS

### Power-On Time ( $t_{PO}$ )

When the supply is ramped to its operating voltage, the device requires a finite time to power its internal components before responding to an input magnetic field.

Power-On Time ( $t_{PO}$ ) is defined as: the time it takes for the output voltage to settle within  $\pm 10\%$  of its steady-state value under an applied magnetic field, after the power supply has reached its minimum specified operating voltage ( $V_{CC(min)}$ ) as shown in Figure 1.

### Temperature Compensation Power-On Time ( $t_{TC}$ )

After Power-On Time ( $t_{PO}$ ) elapses,  $t_{TC}$  is also required before a valid temperature compensated output.

### Propagation Delay ( $t_{pd}$ )

The time interval between a) when the applied magnetic field reaches 20% of its final value, and b) when the output reaches 20% of its final value (see Figure 2).

### Rise Time ( $t_r$ )

The time interval between a) when the sensor IC reaches 10% of its final value, and b) when it reaches 90% of its final value (see Figure 2).

### Response Time ( $t_{RESPONSE}$ )

The time interval between a) when the applied magnetic field reaches 80% of its final value, and b) when the sensor reaches 80% of its output corresponding to the applied magnetic field (see Figure 3). The 90%-90% is also shown in the Electrical Characteristics table.

*Continued on the next page...*

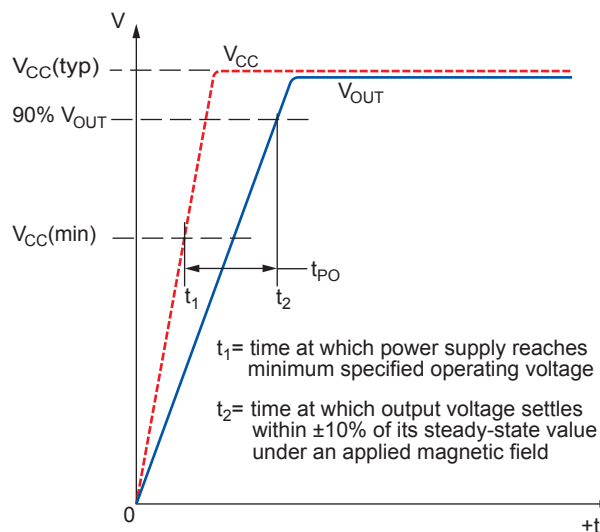


Figure 1: Power-On Time Definition

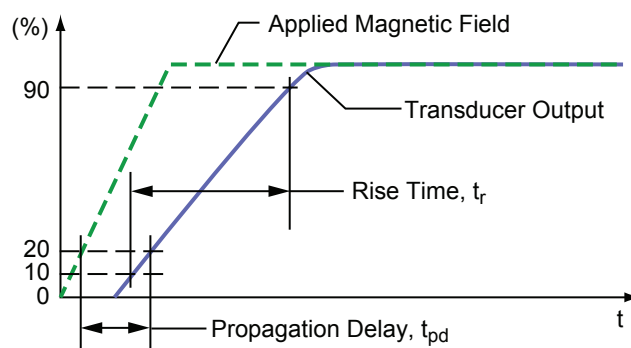


Figure 2: Propagation Delay and Rise Time Definitions

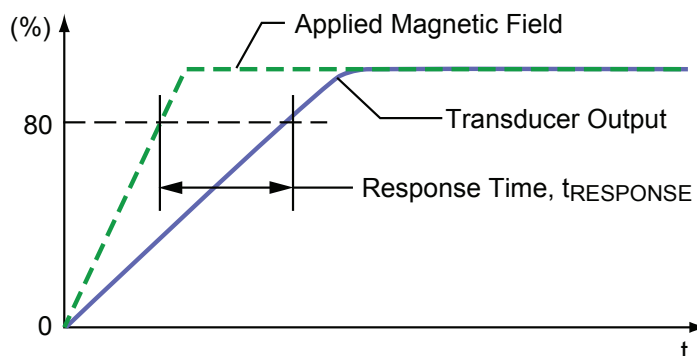


Figure 3: Response Time Definition

## CHARACTERISTIC DEFINITIONS (continued)

### Delay to Clamp ( $t_{CLP}$ )

A large magnetic input step may cause the clamp to overshoot its steady-state value. The Delay to Clamp ( $t_{CLP}$ ) is defined as: the time it takes for the output voltage to settle within  $\pm 1\%$  of its steady-state value, after initially passing through its steady-state voltage, as shown in Figure 4.

### Quiescent Voltage Output ( $V_{OUT(Q)}$ )

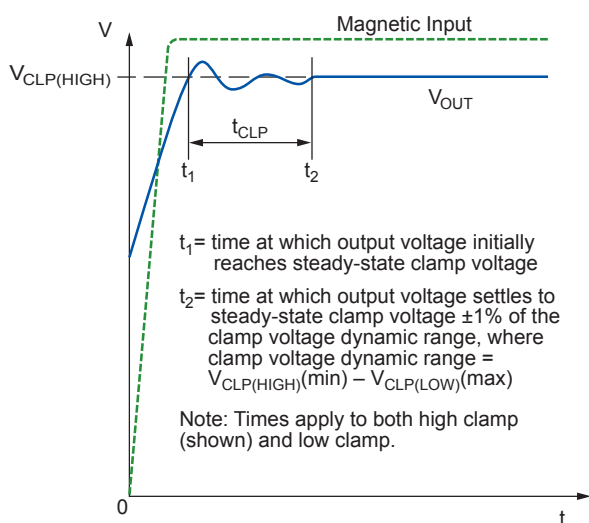
In the quiescent state (no significant magnetic field:  $B = 0$  G), the output ( $V_{OUT(Q)}$ ) has a constant ratio to the supply voltage ( $V_{CC}$ ) throughout the entire operating ranges of  $V_{CC}$  and ambient temperature ( $T_A$ ).

### Initial Unprogrammed Quiescent Voltage Output ( $V_{OUT(Q)init}$ )

Before any programming, the Quiescent Voltage Output ( $V_{OUT(Q)}$ ) has a nominal value of  $V_{CC}/2$ , as shown in Figure 5.

### Quiescent Voltage Output Programming Range ( $V_{OUT(Q)PR}$ )

The Quiescent Voltage Output ( $V_{OUT(Q)}$ ) can be programmed within the Quiescent Voltage Output Range limits:  $V_{OUT(Q)PR(min)}$  and  $V_{OUT(Q)PR(max)}$ . Exceeding the specified Quiescent Voltage Output Range will cause Quiescent Voltage Output Drift Through Temperature Range ( $\Delta V_{OUT(Q)TC}$ ) to deteriorate beyond the specified values, as shown in Figure 5.



**Figure 4: Delay to Clamp definition**

### Average Quiescent Voltage Output Programming Step Size ( $Step_{VOUT(Q)}$ )

The Average Quiescent Voltage Output Programming Step Size ( $Step_{VOUT(Q)}$ ) is determined using the following calculation:

$$Step_{VOUT(Q)} = \frac{V_{OUT(Q)maxcode} - V_{OUT(Q)mincode}}{2^n - 1} \quad (1)$$

where  $n$  is the number of available programming bits in the trim range, 9 bits,  $V_{OUT(Q)maxcode}$  is at decimal code 255, and  $V_{OUT(Q)mincode}$  is at decimal code 256.

### Quiescent Voltage Output Programming Resolution ( $Err_{PGVOUT(Q)}$ )

The programming resolution for any device is half of its programming step size. Therefore, the typical programming resolution will be:

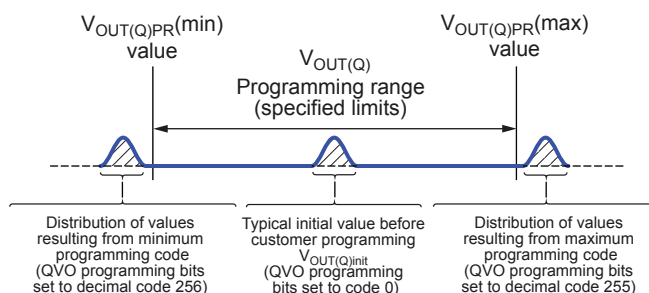
$$Err_{PGVOUT(Q)(typ)} = 0.5 \times Step_{VOUT(Q)(typ)} \quad (2)$$

### Quiescent Voltage Output Temperature Coefficient ( $TC_{QVO}$ )

Device  $V_{OUT(Q)}$  changes as temperature changes, with respect to its programmed Quiescent Voltage Output Temperature Coefficient,  $TC_{QVO}$ .  $TC_{QVO}$  is programmed at  $150^\circ\text{C}$  and calculated relative to the nominal  $V_{OUT(Q)}$  programming temperature of  $25^\circ\text{C}$ .  $TC_{QVO}$  ( $\text{mV}/^\circ\text{C}$ ) is defined as:

$$TC_{QVO} = [V_{OUT(Q)T2} - V_{OUT(Q)T1}] / [1/(T2 - T1)] \quad (3)$$

where  $T1$  is the nominal  $V_{OUT(Q)}$  programming temperature of



**Figure 5: Quiescent Voltage Output Range definition**

Continued on the next page...

## CHARACTERISTIC DEFINITIONS (continued)

25°C, and T2 is the TC<sub>QVO</sub> programming temperature of 150°C. The expected V<sub>OUT(Q)</sub> through the full ambient temperature range (V<sub>OUT(Q)EXPECTED(TA)</sub>) is defined as:

$$V_{OUT(Q)EXPECTED}(T_A) = V_{OUT(Q)T1} + TC_{QVO}(T_A - T1) \quad (4)$$

V<sub>OUT(Q)EXPECTED(TA)</sub> should be calculated using the actual measured values of V<sub>OUT(Q)T1</sub> and TC<sub>QVO</sub> rather than programming target values.

### Quiescent Voltage Output Drift Through Temperature Range (ΔV<sub>OUT(Q)TC</sub>)

Due to internal component tolerances and thermal considerations, the Quiescent Voltage Output (V<sub>OUT(Q)</sub>) may drift from its nominal value through the operating ambient temperature (T<sub>A</sub>). The Quiescent Voltage Output Drift Through Temperature Range (ΔV<sub>OUT(Q)TC</sub>) is defined as:

$$D_{VOUT(Q)TC} = V_{OUT(Q)(T_A)} - V_{OUT(Q)EXPECTED(T_A)} \quad (5)$$

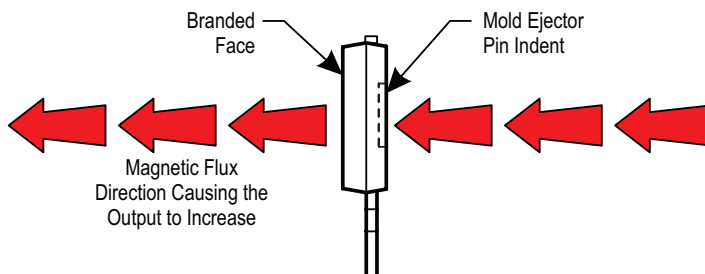
ΔV<sub>OUT(Q)TC</sub> should be calculated using the actual measured values of ΔV<sub>OUT(Q)(T<sub>A</sub>)</sub> and ΔV<sub>OUT(Q)EXPECTED(T<sub>A</sub>)</sub> rather than programming target values.

### Sensitivity (Sens)

The presence of a south polarity magnetic field, perpendicular to the branded surface of the package face, increases the output voltage from its quiescent value toward the supply voltage rail. The amount of the output voltage increase is proportional to the magnitude of the magnetic field applied.

Conversely, the application of a north polarity field decreases the output voltage from its quiescent value. This proportionality is specified as the magnetic sensitivity, Sens (mV/G), of the device, and it is defined as:

$$Sens = \frac{V_{OUT(BPOS)} - V_{OUT(BNEG)}}{BPOS - BNEG}, \quad (6)$$



**Figure 6: Magnetic Flux Polarity**

where BPOS and BNEG are two magnetic fields with opposite polarities.

### Initial Unprogrammed Sensitivity (Sens<sub>init</sub>)

Before any programming, Sensitivity has a nominal value that depends on the SENS\_COARSE bits setting. Each A1367 variant has a different SENS\_COARSE setting.

### Sensitivity Programming Range (Sens<sub>PR</sub>)

The magnetic sensitivity (Sens) can be programmed around its initial value within the sensitivity range limits: Sens<sub>PR(min)</sub> and Sens<sub>PR(max)</sub>. Exceeding the specified Sensitivity Range will cause Sensitivity Drift Through Temperature Range (ΔSens<sub>TC</sub>) to deteriorate beyond the specified values. Refer to the Quiescent Voltage Output Range section for a conceptual explanation of how value distributions and ranges are related.

### Average Fine Sensitivity Programming Step Size (Step<sub>SENS</sub>)

Refer to the Average Quiescent Voltage Output Programming Step Size section for a conceptual explanation.

### Sensitivity Programming Resolution (Err<sub>PGSENS</sub>)

Refer to the Quiescent Voltage Output Programming Resolution section for a conceptual explanation.

### Sensitivity Temperature Coefficient (TC<sub>SENS</sub>)

Device sensitivity changes as temperature changes, with respect to its programmed sensitivity temperature coefficient, TC<sub>SENS</sub>. TC<sub>SENS</sub> is programmed at 150°C and is calculated relative to the nominal sensitivity programming temperature of 25°C.

TC<sub>SENS</sub> (%/°C) is defined as:

$$TC_{SENS} = \left( \frac{Sens_{T2} - Sens_{T1}}{Sens_{T1}} \times 100\% \right) \left( \frac{1}{T2 - T1} \right), \quad (7)$$

where T1 is the nominal Sens programming temperature of 25°C, and T2 is the TC<sub>SENS</sub> programming temperature of 150°C. The expected value of Sens over the full ambient temperature range, Sens<sub>EXPECTED(TA)</sub>, is defined as:

$$Sens_{EXPECTED(TA)} = Sens_{T1} \times \left[ 100\% + \frac{TC_{SENS}(T_A - T1)}{100} \right] \quad (8)$$

Continued on the next page...

## CHARACTERISTIC DEFINITIONS (CONTINUED)

$Sens_{EXPECTED(TA)}$  should be calculated using the actual measured values of  $Sens_{T1}$  rather than programming target values.

### Sensitivity Drift Through Temperature Range ( $\Delta Sens_{TC}$ )

Second-order sensitivity temperature coefficient effects cause the magnetic sensitivity,  $Sens$ , to drift from its expected value over the operating ambient temperature range ( $T_A$ ). The Sensitivity Drift Through Temperature Range ( $\Delta Sens_{TC}$ ) is defined as:

$$\Delta Sens_{TC} = \frac{Sens_{TA} - Sens_{EXPECTED(TA)}}{Sens_{EXPECTED(TA)}} \times 100\% \quad (9)$$

### Sensitivity Drift Due to Package Hysteresis ( $\Delta Sens_{PKG}$ )

Package stress and relaxation can cause the device sensitivity at  $T_A = 25^\circ\text{C}$  to change during and after temperature cycling. The sensitivity drift due to package hysteresis ( $\Delta Sens_{PKG}$ ) is defined as:

$$\Delta Sens_{PKG} = \frac{Sens_{(25^\circ\text{C})2} - Sens_{(25^\circ\text{C})1}}{Sens_{(25^\circ\text{C})1}} \times 100\% \quad (10)$$

where  $Sens_{(25^\circ\text{C})1}$  is the programmed value of sensitivity at  $T_A = 25^\circ\text{C}$ , and  $Sens_{(25^\circ\text{C})2}$  is the value of sensitivity at  $T_A = 25^\circ\text{C}$ , after temperature cycling  $T_A$  up to  $150^\circ\text{C}$  and back to  $25^\circ\text{C}$ .

### Linearity Sensitivity Error ( $Lin_{ERR}$ )

The A1367 is designed to provide a linear output in response to a ramping applied magnetic field. Consider two magnetic fields, B1 and B2. Ideally, the sensitivity of a device is the same for both fields, for a given supply voltage and temperature. Linearity error is present when there is a difference between the sensitivities measured at B1 and B2.

### Linearity Error

Linearity error is calculated separately for the positive ( $Lin_{ERRPOS}$ ) and negative ( $Lin_{ERRNEG}$ ) applied magnetic fields. Linearity Error (%) is measured and defined as:

$$\begin{aligned} Lin_{ERRPOS} &= \left( 1 - \frac{Sens_{BPOS2}}{Sens_{BPOS1}} \right) \times 100\% \quad , \\ Lin_{ERRNEG} &= \left( 1 - \frac{Sens_{BNEG2}}{Sens_{BNEG1}} \right) \times 100\% \quad , \end{aligned} \quad (11)$$

where:

$$Sens_{Bx} = \frac{|V_{OUT(Bx)} - V_{OUT(Q)}|}{B_x} \quad (12)$$

and  $BPOSx$  and  $BNEGx$  are positive and negative magnetic fields, with respect to the quiescent voltage output such that  $|BPOS2| = 2 \times |BPOS1|$  and  $|BNEG2| = 2 \times |BNEG1|$ .

Then:

$$Lin_{ERR} = \max(Lin_{ERRPOS}, Lin_{ERRNEG}) \quad (13)$$

### Symmetry Sensitivity Error ( $Sym_{ERR}$ )

The magnetic sensitivity of an A1367 device is constant for any two applied magnetic fields of equal magnitude and opposite polarities. Symmetry Error,  $Sym_{ERR}$  (%), is measured and defined as:

$$Sym_{ERR} = \left( 1 - \frac{Sens_{BPOS}}{Sens_{BNEG}} \right) \times 100\% \quad (14)$$

where  $Sens_{Bx}$  is as defined in equation 12, and  $BPOSx$  and  $BNEGx$  are positive and negative magnetic fields such that  $|BPOSx| = |BNEGx|$ .

### Ratiometry Error ( $Rat_{ERR}$ )

The A1367 device features ratiometric output. This means that the Quiescent Voltage Output ( $V_{OUT(Q)}$ ) magnetic sensitivity,  $Sens$ , and Output Voltage Clamp ( $V_{CLP(HIGH)}$  and  $V_{CLP(LOW)}$ ) are proportional to the Supply Voltage ( $V_{CC}$ ). In other words, when the supply voltage increases or decreases by a certain percentage, each characteristic also increases or decreases by the same percentage. Error is the difference between the measured change in the supply voltage relative to 5 V, and the measured change in each characteristic.

The ratiometric error in Quiescent Voltage Output,  $Rat_{ERRVOUT(Q)}$  (%), for a given supply voltage ( $V_{CC}$ ) is defined as:

$$Rat_{ERRVOUT(QBI)} = \left[ 1 - \frac{\left( \frac{V_{OUT(QBI)}(V_{CC})}{V_{OUT(QBI)}(5V)} \right)}{\frac{V_{CC}}{5V}} \right] \times 100\% \quad (15)$$

*Continued on the next page...*



## CHARACTERISTIC DEFINITIONS (CONTINUED)

$Rat_{ERRVOUT(QU)}$  is defined in the same way as  $Rat_{ERRVOUT(QBI)}$  with a factor of 1/5 multiplied.

$$Rat_{ERRVOUT(QU)} = \left[ 1 - \frac{\left( \frac{V_{OUT(QU)}(V_{CC})}{V_{OUT(QU)}(5V)} \right)}{\frac{V_{CC}}{5V}} \right] \times \frac{1}{5} \times 100\% \quad (16)$$

This is to scale the ratiometry error of the unidirectional device so that it can be compared with the bidirectional device.

The ratiometric error in magnetic sensitivity,  $Rat_{ERRSens}$  (%), for a given Supply Voltage ( $V_{CC}$ ) is defined as:

$$Rat_{ERRSens} = \left( 1 - \frac{Sens(V_{CC}) / Sens(5V)}{V_{CC} / 5V} \right) \times 100\% \quad (17)$$

The ratiometric error in the clamp voltages,  $Rat_{ERRCLP}$  (%), for a given supply voltage ( $V_{CC}$ ) is defined as:

$$Rat_{ERRCLP} = \left( 1 - \frac{V_{CLP(V_{CC})} / V_{CLP(5V)}}{V_{CC} / 5V} \right) \times 100\% , \quad (18)$$

where  $V_{CLP}$  is either  $V_{CLP(HIGH)}$  or  $V_{CLP(LOW)}$ .

### Power-On Reset Voltage ( $V_{POR}$ )

On power-up, to initialize to a known state and avoid current spikes, the A1367 is held in Reset state. The Reset signal is disabled when  $V_{CC}$  reaches  $V_{PORH}$  and time  $t_{PORR}$  has elapsed, allowing the output voltage to go from a high-impedance state into normal operation. During power-down, the Reset signal is enabled when  $V_{CC}$  reaches  $V_{PORL}$ , causing the output voltage to go into a high-impedance state. (Note that a detailed description of POR can be found in the Functional Description section).

### Power-On Reset Release Time ( $t_{PORR}$ )

When  $V_{CC}$  rises to  $V_{PORH}$ , the Power-On Reset Counter starts. The A1367 output voltage will transition from a high-impedance state to normal operation only when the Power-On Reset Counter has reached  $t_{PORR}$  and  $V_{CC}$  has been maintained above  $V_{PORH}$ .

### Output Saturation Voltage ( $V_{SAT}$ )

When output voltage clamps are disabled, the output voltage can swing to a maximum of  $V_{SAT(HIGH)}$  and to a minimum of  $V_{SAT(LOW)}$ .

### Broken Wire Voltage ( $V_{BRK}$ )

If the GND pin is disconnected (broken wire event), output voltage will go to  $V_{BRK(HIGH)}$  (if a load resistor is connected to VCC) or to  $V_{BRK(LOW)}$  (if a load resistor is connected to GND).



## FUNCTIONAL DESCRIPTION

### Programming Sensitivity and Quiescent Voltage Output

Sensitivity and  $V_{OUT(Q)}$  can be adjusted by programming SENS\_FINE and QVO bits, as illustrated in Figure 7 and Figure 8.

Customers should not program sensitivity or  $V_{OUT(Q)}$  beyond the maximum or minimum programming ranges specified in the Operating Characteristics table. Exceeding the specified limits will cause the sensitivity and  $V_{OUT(Q)}$  drift over the temperature range ( $\Delta\text{Sens}_{TC}$  and  $\Delta V_{OUT(Q)TC}$ ) to deteriorate beyond the specified values.

Programming sensitivity might cause a small drift in  $V_{OUT(Q)}$ . As a result, Allegro recommends programming sensitivity first, then  $V_{OUT(Q)}$ .

### Coarse Sensitivity

Each A1367 variant is programmed to a different coarse sensitivity setting. Devices are tested, and temperature compensation is factory programmed under that specific coarse sensitivity setting. If the coarse sensitivity setting is changed by programming SENS\_COARSE bits, Allegro cannot guarantee the specified sensitivity drift through temperature range limits ( $\Delta\text{Sens}_{TC}$ ).

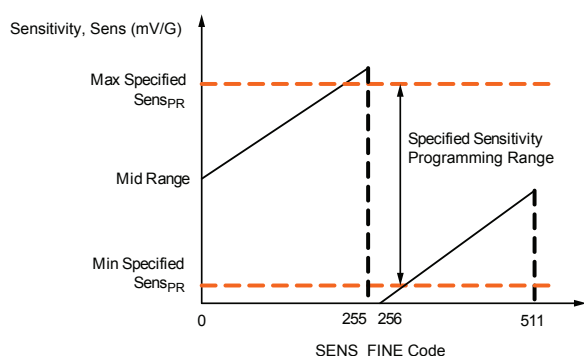


Figure 7: Device Sensitivity versus SENS\_FINE Programmed Value

### Memory-Locking Mechanisms

The A1367 is equipped with two distinct memory-locking mechanisms:

- **Default Lock** At power-up, all registers of the A1367 are locked by default. EEPROM and volatile memory cannot be read or written. To disable Default Lock, a specific 30 bit customer access code has to be written to address 0x24 within Access Code Timeout ( $t_{ACC} = 8$  ms) from power-up. After doing so, registers can be accessed. If VCC is power-cycled, the Default Lock will automatically be re-enabled. This ensures that during normal operation, memory content will not be altered due to unwanted glitches on VCC or the output pin.
- **Lock Bit** After EEPROM has been programmed by the user, the EELOCK bit can be set high and VCC power-cycled to permanently disable the ability to read or write any register. This will prevent the ability to disable Default Lock using the method described above. Please note that after the EELOCK bit is set high and the VCC pin is power-cycled, you will not have the ability to clear the EELOCK bit or read/write any register.

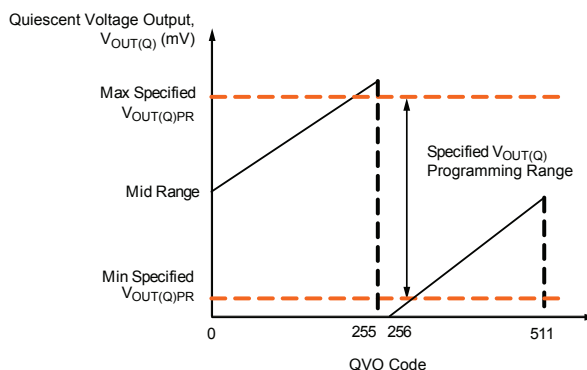


Figure 8: Device  $V_{OUT(Q)}$  versus QVO Programmed Value

## FUNCTIONAL DESCRIPTION (continued)

### Power-On Reset (POR) Operation

The descriptions in this section assume temperature = 25°C, no output load ( $R_L$ ,  $C_L$ ), and no significant magnetic field is present.

- **Power-Up.** At power-up, as  $V_{CC}$  ramps up, the output is in a high-impedance state. When  $V_{CC}$  crosses  $V_{PORH}$ , the output will go to  $V_{CC}/2$  after  $t_{PORD}$ , where  $t_{PORD}$  = POR Release counter  $t_{PORR}$  + POR Analog delay  $t_{PORA}$ .
- **$V_{CC}$  drops below  $V_{CC(min)} = 4.5$  V.** If  $V_{CC}$  drops below  $V_{PORL}$ , the output will be in a high-impedance state. If  $V_{CC}$  recovers and exceeds  $V_{PORH}$ , the output will go back to normal operation after  $t_{PORD}$ .

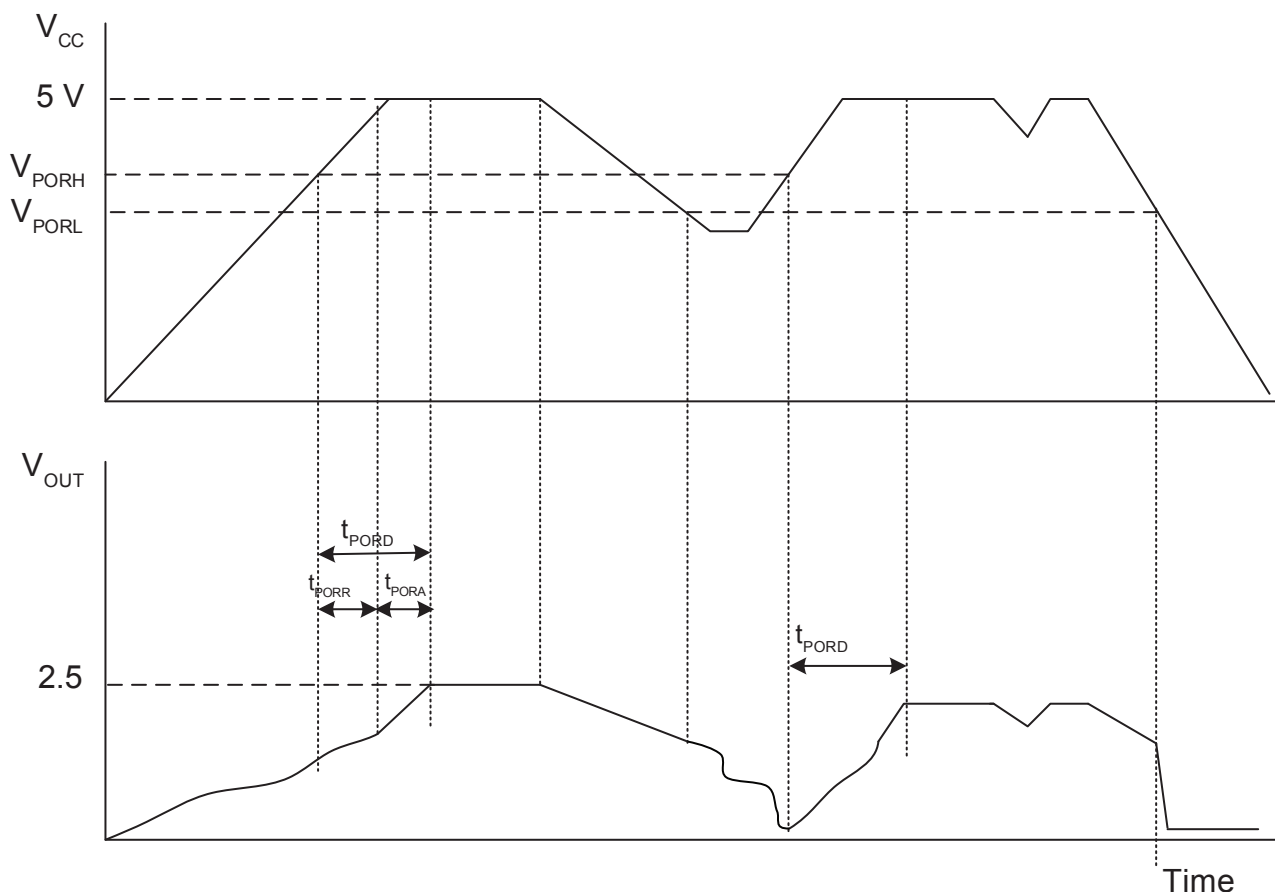


Figure 9: POR Operation

### FUNCTIONAL DESCRIPTION (continued)

#### Detecting Broken Ground Wire

If the GND pin is disconnected, node A becoming open (see Figure 11), the VOUT pin will go to a high-impedance state. The output voltage will go to  $V_{BRK(HIGH)}$  if a load resistor  $R_{L(PULLUP)}$  is connected to  $V_{CC}$  or to  $V_{BRK(LOW)}$  if a load resistor  $R_{L(PULLDOWN)}$  is connected to GND. The device will not respond to any applied magnetic field.

If the ground wire is reconnected, the A1367 will resume normal operation.

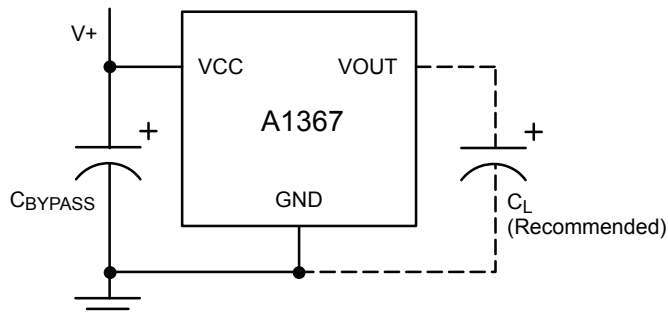
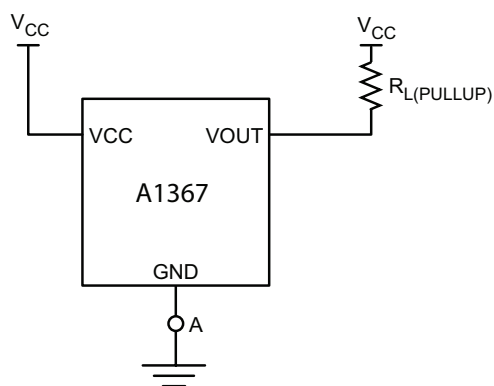
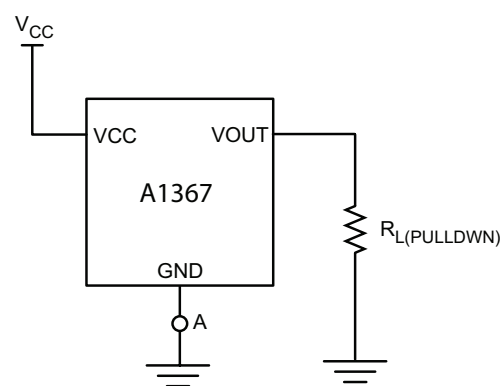


Figure 10: Typical Application Drawing



Connecting VOUT to  $R_{L(PULLUP)}$



Connecting VOUT to  $R_{L(PULLDOWN)}$

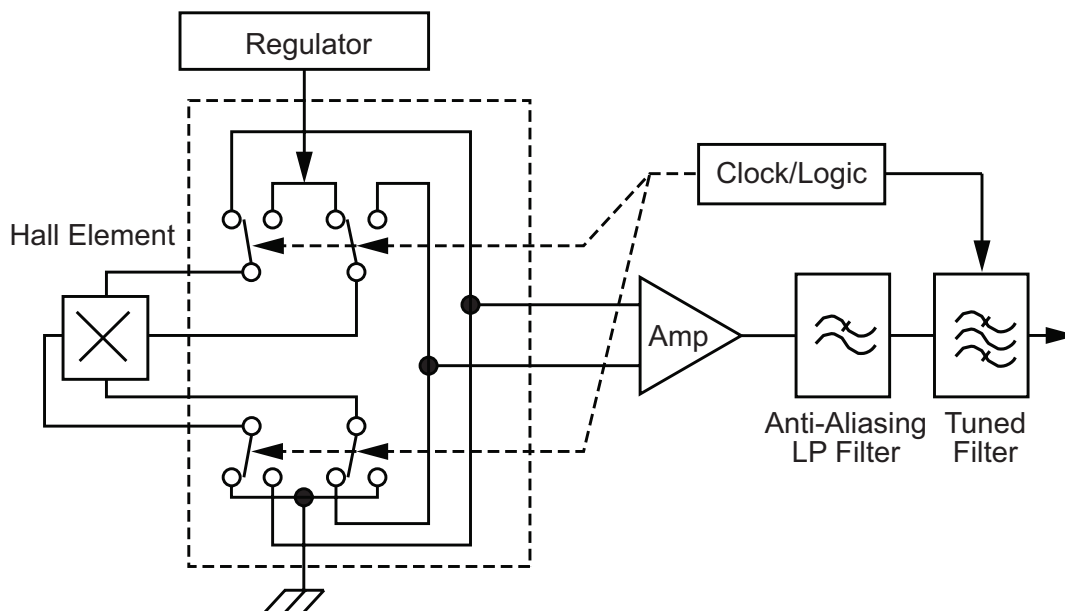
Figure 11: Connections for Detecting Broken Ground Wire

**FUNCTIONAL DESCRIPTION (continued)****Chopper Stabilization Technique**

When using Hall-effect technology, a limiting factor for total accuracy is the small signal voltage developed across the Hall element. This voltage is disproportionally small relative to the offset that can be produced at the output of the Hall sensor. This makes it difficult to process the signal while maintaining an accurate, reliable output over the specified operating temperature and voltage ranges. Chopper stabilization is a unique approach used to minimize Hall offset on the chip.

The technique removes key sources of the output drift induced by thermal and mechanical stresses. This offset reduction technique is based on a signal modulation-demodulation process. The undesired offset signal is separated from the magnetic field-induced signal in the frequency domain through modulation. The subsequent demodulation acts as a modulation process for the offset, causing the magnetic field-induced signal to recover its

original spectrum at base band, while the DC offset becomes a high-frequency signal. The magnetic-sourced signal can then pass through a low-pass filter, while the modulated DC offset is suppressed. This high-frequency operation allows a greater sampling rate that results in higher accuracy and faster signal-processing capability. This approach desensitizes the chip to the effects of thermal and mechanical stresses, and produces devices that have extremely stable quiescent Hall output voltages and precise recoverability after temperature cycling. This technique is made possible through the use of a BiCMOS process, which allows the use of low-offset, low-noise amplifiers in combination with high-density logic integration and a proprietary, dynamic notch filter. The new Allegro filtering techniques are far more effective at suppressing chopper-induced signal noise compared to the previous generation of Allegro chopper-stabilized devices.

**Figure 12: Concept of Chopper Stabilization**

## PROGRAMMING GUIDELINES

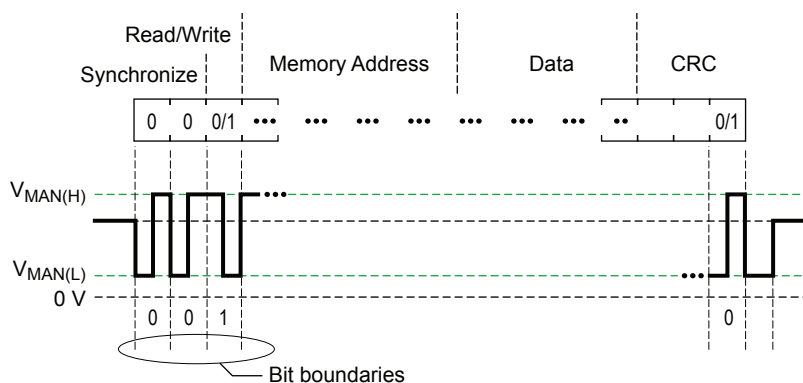
### Serial Communication

The serial interface allows an external controller to read and write registers, including EEPROM, in the A1367 using a point-to-point command/acknowledge protocol. The A1367 does not initiate communication; it only responds to commands from the external controller. Each transaction consists of a command from the controller. If the command is a write, there is no acknowledging from the A1367. If the command is a read, the A1367 responds by transmitting the requested data.

Serial interface timing parameters can be found in the Program-

ming Levels table on page 22. Note that the external controller must avoid sending a Command frame that overlaps a Read Acknowledge frame.

The serial interface uses a Manchester-encoding-based protocol per G.E. Thomas (0 = rising edge, 1 = falling edge), with address and data transmitted MSB first. Four commands are recognized by the A1367: Write Access Code, Write to Volatile Memory, Write to Non-Volatile Memory (EEPROM) and Read. One frame type, Read Acknowledge, is sent by the A1367 in response to a Read command.



**Figure 13: General Format for Serial Interface Commands**

## PROGRAMMING GUIDELINES (continued)

The A1367 device uses a three-wire programming interface, where VCC is used to control the program enable signal, data is transmitted on VOUT, and all signals are referenced to GND. This three-wire interface makes it possible to communicate with multiple devices with shared VCC and GND lines.

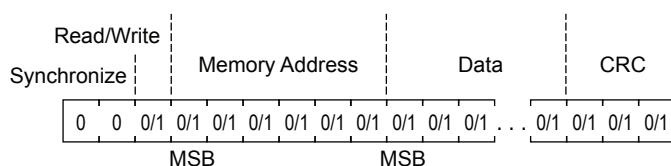
The four transactions (Write Access, Write to EEPROM, Write to Volatile Memory, and Read) are shown in the figures on the following pages. To initialize any communication, V<sub>CC</sub> should be increased to a level above V<sub>prgH(min)</sub> without exceeding V<sub>prgH(max)</sub>. At this time, VOUT is disabled and acts as an input.

After program enable is asserted, the external controller must drive the output low in a time less than t<sub>d</sub>. This prevents the device interpreting any false transients on VOUT as data pulses. After the command is completed, V<sub>CC</sub> is reduced below V<sub>prgL</sub>,

back to normal operating level. Also, the output is enabled and responds to magnetic input.

When performing a Write to EEPROM transaction, the A1367 requires a delay of t<sub>w</sub> to store the data into the EEPROM. The device will respond with a high-to-low transition on VOUT to indicate the Write to EEPROM sequence is complete.

When sending multiple command frames, it is necessary to toggle the program enable signal on VCC. After the first command frame is completed, and V<sub>CC</sub> remains at V<sub>prgH</sub>, the device will ignore any subsequent pulses on the output. When the program enable signal is brought below V<sub>prgL(max)</sub>, the output will respond to the magnetic input. To send the next command, the program enable signal is increased to V<sub>prgH</sub>.



Quantity of Bits	Name	Values	Description
2	Synchronization	00	Used to identify the beginning of a serial interface command
1	Read / Write	0	[As required] Write operation
		1	[As required] Read operation
6	Address	0/1	[Read/Write] Register address (volatile memory or EEPROM)
30	Data	0/1	24 data bits and 6 ECC bits. For a read command frame the data consists of 30 bits: [29:26] Don't Care, [25:24] ECC Pass/Fail, and [23:0] Data. Where bit 0 is the LSB. For a write command frame the data consists of 30 bits: [29:24] Don't Care and [23:0] Data. Where bit 0 is the LSB.
3	CRC	0/1	Bits to check the validity of frame.

Figure 14: Command Frame General Format

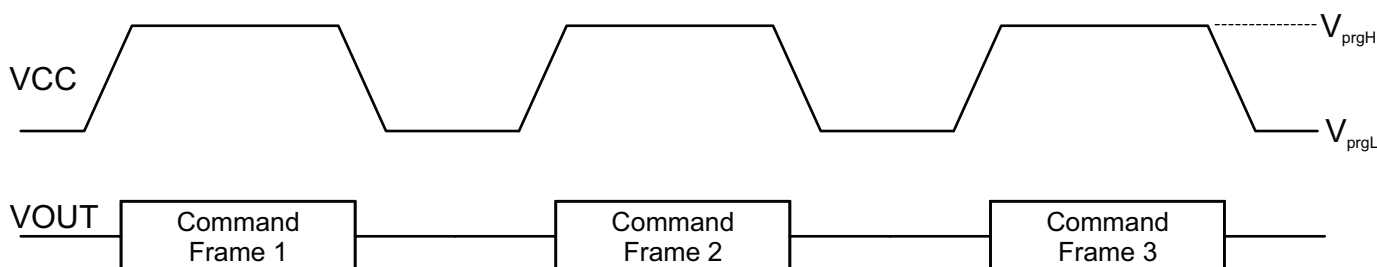


Figure 15: Format for Sending Multiple Transactions

## PROGRAMMING GUIDELINES (continued)

Programming Parameters,  $C_{\text{BYPASS}} = 0.1 \mu\text{F}$ ,  $V_{\text{CC}} = 5 \text{ V}$

Characteristics	Symbol	Note	Min.	Typ.	Max.	Unit
Program Enable Voltage (High)	$V_{\text{prgH}}$	Program enable signal high level on VCC	8	8.25	8.5	V
Program Enable Voltage (Low)	$V_{\text{prgL}}$	Program enable signal low level on VCC	$V_{\text{CC}}$	—	6	V
Output Enable Delay	$t_e$	External capacitance ( $C_{\text{LX}}$ ) on VOUT may increase the Output Enable Delay	—	125	—	$\mu\text{s}$
Program Time Delay	$t_d$		—	15	—	$\mu\text{s}$
Program Write Delay	$t_w$		—	20	—	ms
Manchester High Voltage	$V_{\text{MAN(H)}}$	Data pulses on VOUT	4	5	$V_{\text{CC}}$	V
Manchester Low Voltage	$V_{\text{MAN(L)}}$	Data pulses on VOUT	0	—	1	V
Bit Rate	$t_{\text{BITR}}$	Communication rate	0.3	80	100	kbps
Bit Time	$t_{\text{BIT}}$	Data bit pulse width at 100 kbps	—	(10)	—	$\mu\text{s}$

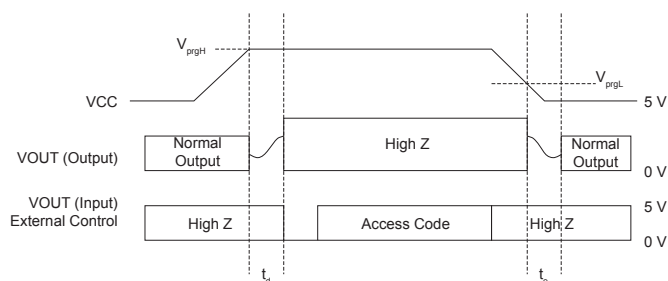


Figure 16: Write Access Code

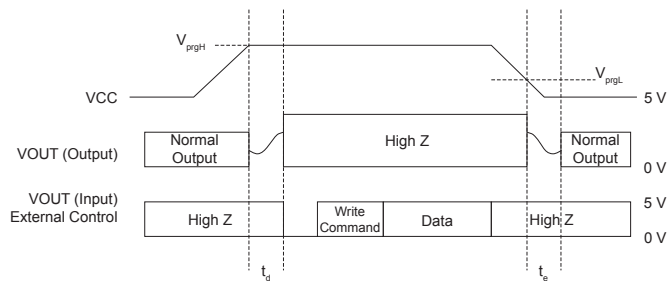


Figure 17: Write Volatile Memory

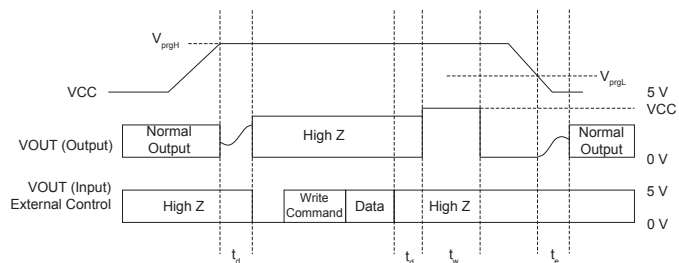


Figure 18: Write Non-Volatile Memory

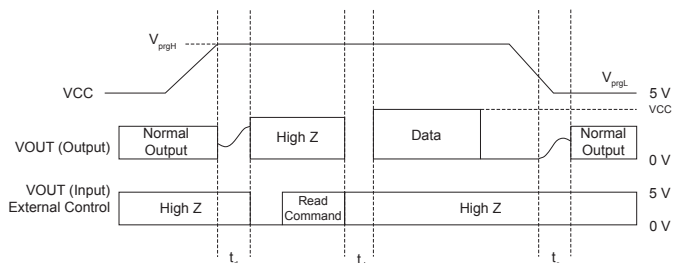


Figure 19: Read



### PROGRAMMING GUIDELINES (continued)

#### Read (Controller to A1367)

The fields for the Read command are:

- Sync (2 zero bits)
- Read/Write (1 bit, must be 1 for read)
- CRC (3 bits)

Figure 20 shows the sequence for a Read command.

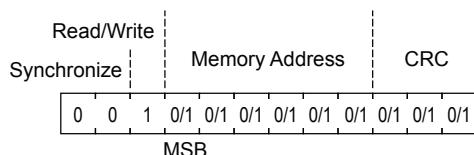


Figure 20: Read Sequence

#### Read Acknowledge (A1367 to Controller)

The fields for the data return frame are:

- Sync (2 zero bits)
- Data (30 bits):
  - [29:26] Don't Care
  - [25:24] ECC Pass/Fail
  - [23:0] Data

Figure 21 shows the sequence for a Read Acknowledge. Refer to the Detecting ECC Error section for instructions on how to detect Read/Write Synchronize Memory Address Data (30 bits) and ECC failure.

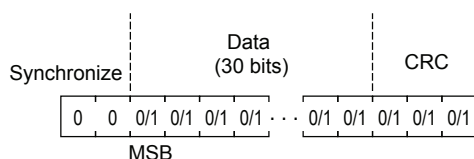


Figure 21: Read Acknowledgement Sequence

#### Write (Controller to A1367)

The fields for the Write command are:

- Sync (2 zero bits)
- Read/Write (1 bit, must be 0 for write)
- Address (6 bits, ADDR[5] is for EEPROM, 1 for register; refer to the address map)
- Data (30 bits):
  - [29:24] Don't Care
  - [23:0] Data
- CRC (3 bits)

Figure 22 shows the sequence for a Write command. Bits [29:24] are Don't Care because the A1367 automatically generates 6 ECC bits based on the content of bits [23:0]. These ECC bits will be stored in EEPROM at locations [29:24].

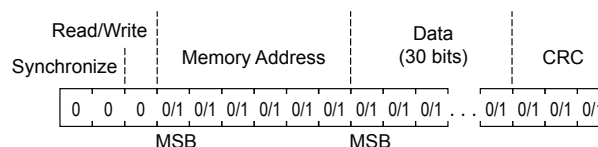


Figure 22: Write Sequence

#### Write Access Code (Controller to A1367)

The fields for the Access Code command are:

- Sync (2 zero bits)
- Read/Write (1 bit, must be 0 for write)
- Address (6 bits, address 0x24 for Customer Access)
- Data (30 bits, 0x2C413737 for Customer Access)
- CRC (3 bits)

Figure 23 shows the sequence for an Access Code command.

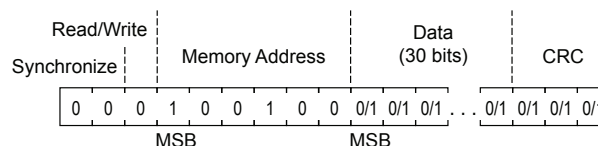


Figure 23: Write Access Code

The controller must open the serial communication with the A1367 device by sending an Access Code. It must be sent within Access Code Timeout,  $t_{ACC}$ , from power-up, or the device will be disabled for read and write access.

#### Access Codes Information

Name	Serial Interface Format	
	Register Address (Hex)	Data (Hex)
Customer	0x24	0x2C413737

## PROGRAMMING GUIDELINES (CONTINUED)

### Memory Address Map

Address	Register Name	Parameter Name	Description	r/w	Bits	Location
0x02	ID_C	CUST_ID		r/w	24	23:0
0x03	SENSE_C	SENS_FINE	Sensitivity, fine adjustment	r/w	9	8:0
		SENS_COARSE [1]	Coarse sensitivity	r/w	2	10:9
		POL	Reverses output polarity	r/w	1	11
		RESERVED	Reserved scratch pad for SENS_FINE	r/w	9	20:12
		RESERVED	Reserved scratch pad for SENS_COARSE	r/w	2	22:21
		RESERVED	Reserved scratch pad for SENS polarity	r/w	1	23
0x04	QVO_C	QVO_FINE	Quiescent Output Voltage (QVO), fine adjustment	r/w	9	8:0
		UNI	Unidirectional bit	r/w	1	9
		CLAMP_EN	Enables output clamps high and low	r/w	1	10
		RATIOM_DIS	Ratiometry disable	r/w	1	11
		RESERVED	Reserved scratch pad for QVO_FINE	r/w	9	20:12
		RESERVED		r/w	3	23:21
0x06	COMCFG_C	DEV_LOCK	Bit to set the EELOCK (for new lock sequence)	r/w	1	0
		Unused		r/w	11	23:1

[1] SENS\_COARSE[0..1] = 11 is factory reserved. Only 00, 01, and 10 are valid entries.

### Enabling/Disabling Ratiometry

By default, this device has an output that is ratiometric, meaning that Quiescent Voltage Output ( $V_{OUT(Q)}$ ) magnetic sensitivity, Sens, and Output Voltage Clamp ( $V_{CLP(HIGH)}$  and  $V_{CLP(LOW)}$ ) are proportional to the Supply Voltage ( $V_{CC}$ ). There is an EEPROM bit (RATIOM\_DIS) that can be used to disable the ratiometry of the output, making the above mentioned components of the output no longer proportional to  $V_{CC}$ . This bit can be found in the QVO\_C register (0x04). Writing a 1 to this bit disables ratiometry; writing a 0 to this bit enables ratiometry.

### EEPROM Cell Organization

Programming coefficients are stored in non-volatile EEPROM, which is separate from the digital subsystem, and accessed by the digital subsystem EEPROM Controller module. The EEPROM is organized as 30 bit wide words, each word is made up of 24 data bits and 6 ECC (Error Checking and Correction) check bits, stored as shown in table below.

EEPROM Bit	29	28	27	26	25	24	23	22	21	20	19	18	17	16	15
Contents	C5	C4	C3	C2	C1	C0	D23	D22	D21	D20	D19	D18	D17	D16	D15



14	13	12	11	10	9	8	7	6	5	4	3	2	1	0
D14	D13	D12	D11	D10	D9	D8	D7	D6	D5	D4	D3	D2	D1	D0

External EEPROM Word Bit Sequence; C# – Check Bit, D# – Data Bit

## PROGRAMMING GUIDELINES (CONTINUED)

### Diagnostic Clamps

Diagnostic clamps can be enabled in EEPROM for this device. By writing a 1 to CLAMP\_EN (bit 10 in QVO\_C register (0x04)), the output voltage hits a maximum and minimum voltage that correspond to the specification Output Voltage Clamp in the above tables. Writing a 0 to this bit disables the clamps and allows the output to swing to the Output Saturation Voltage.

### EEPROM Error Checking and Correction (ECC)

Hamming code methodology is implemented for EEPROM checking and correction. The device has ECC enabled after power-up.

The device always returns 30 bits.

The message received from controller is analyzed by the device EEPROM driver and ECC bits are added. The first 6 received bits from device to controller are dedicated to ECC.

### Detecting ECC Error

If an uncorrectable error has occurred, bits 25:24 are set to 10, the VOUT pin will go to a high-impedance state, and the device will not respond to the applied magnetic field. To detect this high-impedance state, the circuit connection with  $R_{L(PULLDOWN)}$  shown in Figure 11 must be used and the output voltage will go to  $V_{BRK(LOW)}$ . The connection with  $R_{L(PULLUP)}$  should not be used to detect this error.

#### EEPROM ECC Errors

Bits	Name	Description
29:26	—	No meaning
25:24	ECC	00 = No Error 01 = Error detected and message corrected 10 = Uncorrectable error 11 = No meaning
23:0	D[23:0]	EEPROM data

### PACKAGE OUTLINE DRAWING

#### For Reference Only - Not for Tooling Use

(Reference DWG-9202)

Dimensions in millimeters - NOT TO SCALE

Dimensions exclusive of mold flash, gate burs, and dambar protrusions  
Exact case and lead configuration at supplier discretion within limits shown

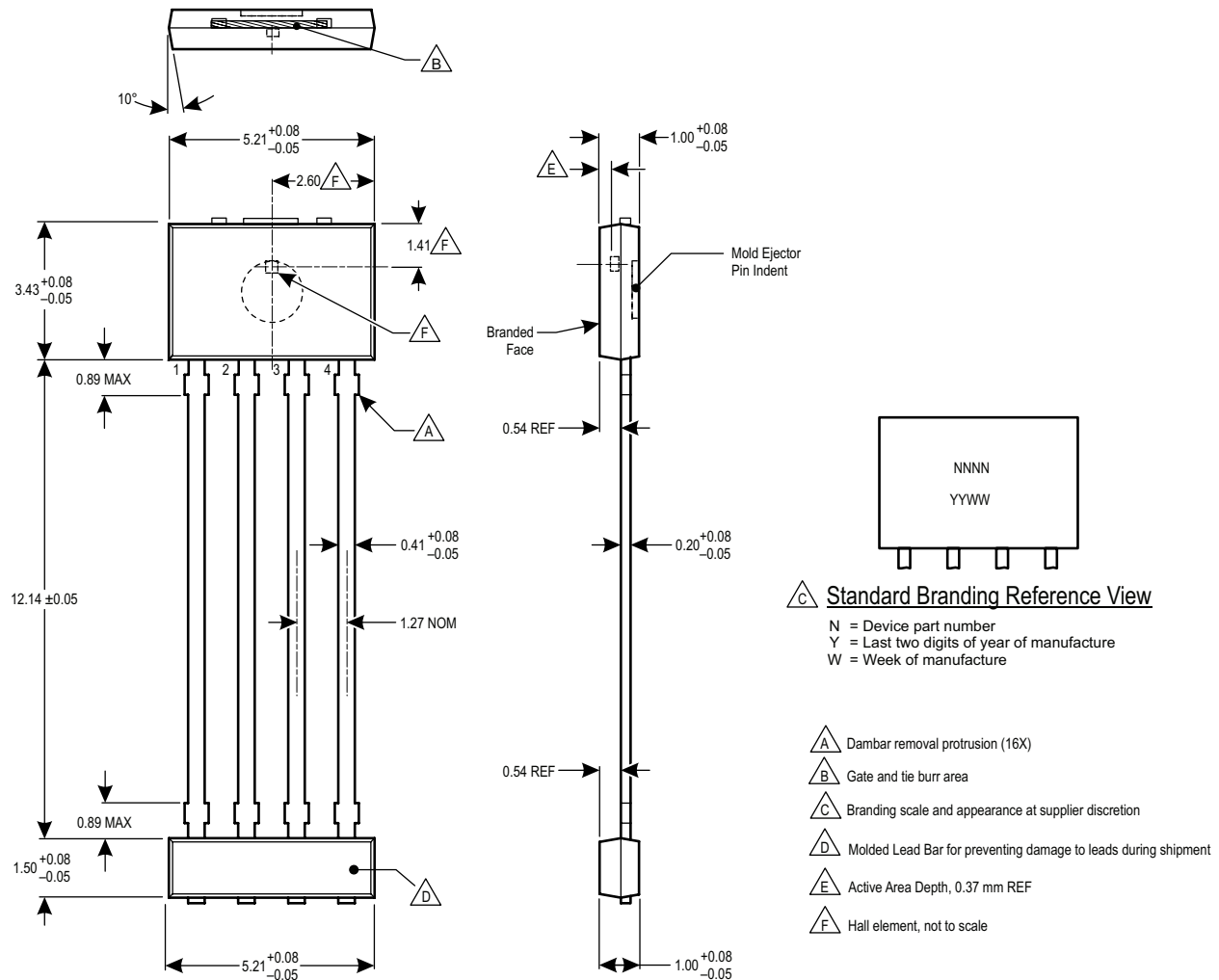


Figure 24: Package KT, 4-Pin SIP

**Revision History**

Revision	Date	Description
–	March 9, 2016	Initial release
1	May 31, 2016	Updated Description (page 1), Features and Benefits (page 2), Noise (page 5), Quiescent Voltage Output Programming Range (page 6), Sensitivity Drift Due to Package Hysteresis (page 7), and Character Performance Data plots (page 8-9).
2	August 19, 2016	Updated Selection Guide (page 2).
3	February 6, 2017	Corrected Functional Block Diagram (page 1).
4	November 13, 2017	Corrected Package Outline Drawing Standard Branding label (page 26).

Copyright ©2017, Allegro MicroSystems, LLC

Allegro MicroSystems, LLC reserves the right to make, from time to time, such departures from the detail specifications as may be required to permit improvements in the performance, reliability, or manufacturability of its products. Before placing an order, the user is cautioned to verify that the information being relied upon is current.

Allegro's products are not to be used in any devices or systems, including but not limited to life support devices or systems, in which a failure of Allegro's product can reasonably be expected to cause bodily harm.

The information included herein is believed to be accurate and reliable. However, Allegro MicroSystems, LLC assumes no responsibility for its use; nor for any infringement of patents or other rights of third parties which may result from its use.

For the latest version of this document, visit our website:

**[www.allegromicro.com](http://www.allegromicro.com)**

