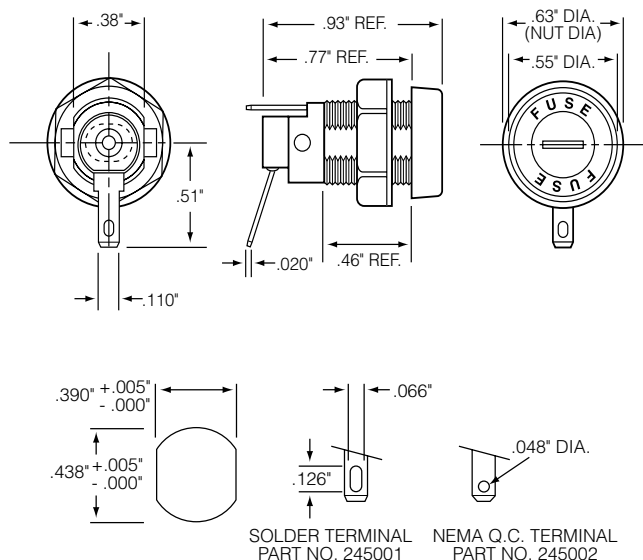


## 245 Series Shock-Safe Fuse Holders for 2AG Fuses



### Dimensions



**MOUNTING HOLE      TERMINAL DETAIL**

### Product Characteristics

<b>Compatible Fuse Size</b>	<b>2AG</b>
<b>Features</b>	Screwdriver slot knob style provides low profile Shock-Safe design reduces possibility of electrical shock, per IEC Standards 60127 and 60065
<b>Electrical</b>	Rated at 10 amperes for any voltage up to 300 volts. Insulation Resistance: 10,000 megohm minimum at 500 VDC. Contact Resistance: Less than .005 ohm average at currents up to 1 ampere.
<b>Dielectric Strength</b>	4000 volts terminal to panel, 3000 volts terminal to terminal. Mounting: Withstands 10 lb.-in. mounting torque. Maximum panel thickness is .250"
<b>Molded Parts</b>	Body, knob, and hex nut material: Black, glass reinforced thermoplastic.
<b>Knob</b>	Screwdriver slot, fuse extractor type with nickel-plated, beryllium copper insert. Stainless steel spring.
<b>Terminals</b>	Brass. Tin-plated. Solder/Q.C. Terminals accept soldered wire or a .110" quick-connect receptacle. The NEMA-style .110" Q.C. terminal has a .048" hole.
<b>Ambient Temperature</b>	-40°C to +85°C.

### Agency Approval

Agency	Agency File Number
	E14721
	007316

### Ordering Information

Catalog Number	Type of Terminal
<b>245 001</b>	Solder/Q.C. Terminal
<b>245 002</b>	NEMA Q.C. Terminal

### Additional Information



**Datasheet**



**Resources**



**Samples**