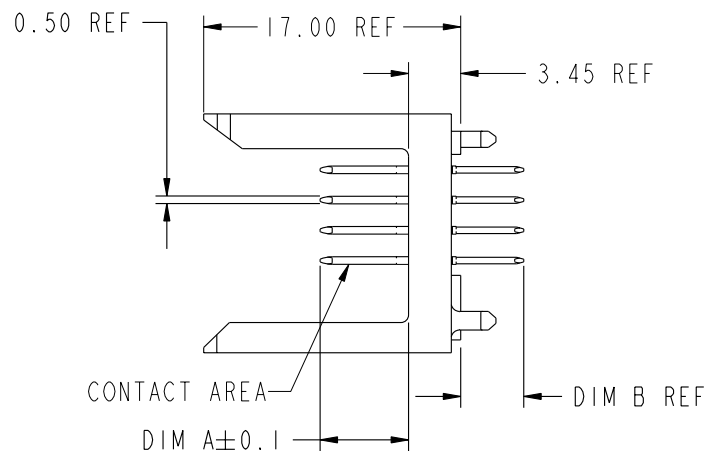
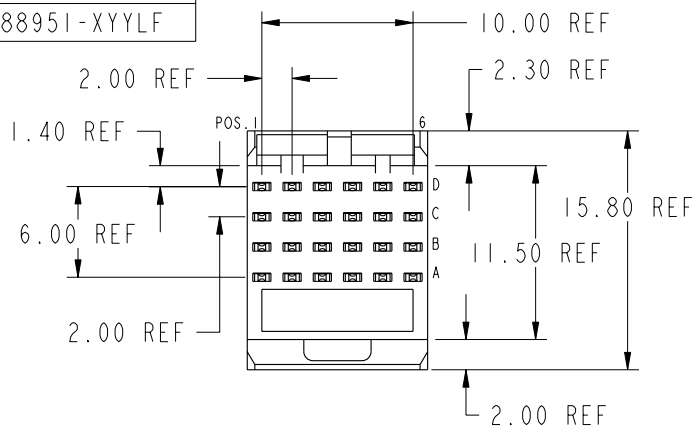


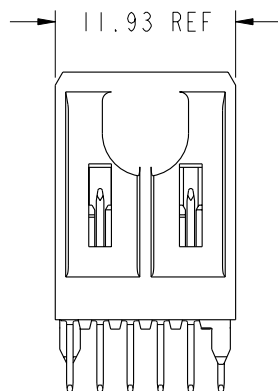


PRODUCT NUMBER
88951-XYX
88951-XYXLF

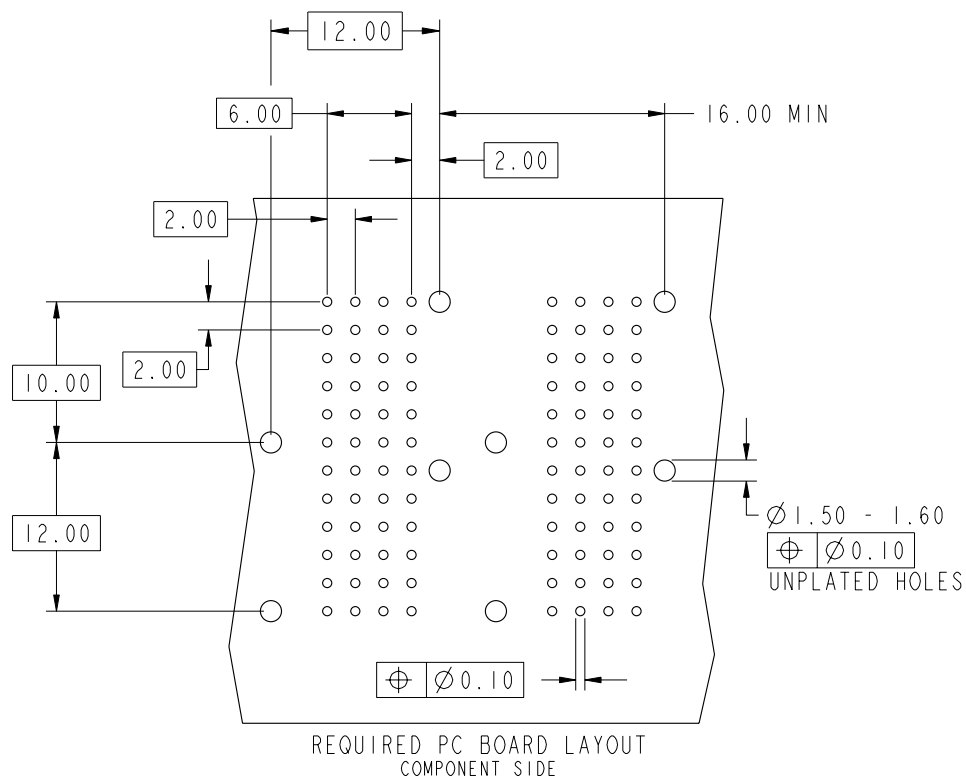


PLATING IN CONTACT AREA

DASH NUMBER	PERFORMANCE LEVEL	NOTES
-NIYY	TELCORDIA CO (NXT)	-
-IYY	TELCORDIA CO	-
-2YY	TELECOM CLASS	-
-3YY	IEC CLASS I	-
-5YY	TELCORDIA UE	-
-9YY	TELCORDIA CO	-
-NIYYLF	TELCORDIA CO (NXT) IEC CLASS I	SEE NOTE 8
-IYYLF	TELCORDIA CO IEC CLASS I	SEE NOTE 8
-2YYLF	TELECOM CLASS	SEE NOTE 8
-5YYLF	TELCORDIA UE	SEE NOTE 8
-36ILF	CUSTOMER SPECIAL	SEE NOTE 8
-377LF	CUSTOMER SPECIAL	SEE NOTE 8



mat'l code				tolerances unless otherwise specified				CUSTOMER		FCI			
ltr	ecn no.	dr	date					COPY		www.fciconnect.com			
W	V06-0569	DCH	2006-06-13	linear	0.X ± 0.3			projection		title			
-	-	-	-		0.XX ± 0.13					METRAL SIGNAL HEADER			
R	V21670	TAB	10/18/02	angles	.XXX ± .051					I MOD. 4 ROW STB			
S	V03-1059	DAI	09/24/03	dr	0° ± 2°								
T	V05-0393	DAI	04/26/05	enrg									
U	V05-1001	LP	11/7/05	chr									
V	V06-0123	DAI	02/09/06	appd									
sheet				revision	W	W	W	W	W	product family			
index				sheet	1	2	3	4	5	METRAL			
										code			
										213			
										sheet			
										1 of 7			



KEY		
CODE	DIMENSIONS	
	DIM "A" MATE	DIM "B" TAIL
1	5.00	4.25
2	5.75	4.25
3	6.50	4.25
4	7.25	4.25
5	5.00	3.30
6	5.75	3.30
7	6.50	3.30
8	7.25	3.30
9	5.00	2.65
10	5.75	2.65
11	6.50	2.65
12	7.25	2.65
13	8.00	4.25

SEE PRINT 58351 FOR
ADDITIONAL PCB INFORMATION

mat'l code				tolerances unless otherwise specified		CUSTOMER		<div>FCi</div> <div>www.fciconnect.com</div>						
ltr	ecr no.	dr	date	linear	0. X ± 0.3		COPY		<div>title</div> <div>METRAL SIGNAL HEADER 1 MOD. 4 ROW STB</div>					
W					0. XX ± 0.13		projection							
					.XXX ± .051		<div><div><div></div></div><div></div></div>							
				angles	0° ± 2°		<div><div><div></div></div><div></div></div>							
				dr	T.BRUNGARD	11/19/99	<div>MM</div> <div>scale</div> <div>2 : 1</div>		product family		METRAL	code	213	
				enr	M.STRAWSER	11/19/99			size	dwg no			sheet	2
				chr	M.STRAWSER	11/19/99			A		88951			
				appd	M.STRAWSER	02/29/00								
sheet index		revision sheet												

Pro/E

cage code 22526

PDM: Rev:W

STATUS:Released

Printed: Jun 17, 2006



METRAL P/N	ROW	CONTACT CODE MOD. 1					
		1	2	3	4	5	6
88951-X01 SEE NOTE 9 LEAD FREE OPTION	D	1	1	1	1	1	1
	C	1	1	1	1	1	1
	B	1	1	1	1	1	1
	A	1	1	1	1	1	1

METRAL P/N	ROW	CONTACT CODE MOD. 1					
		1	2	3	4	5	6
88951-X02 SEE NOTE 9 LEAD FREE OPTION	D	1	1	1	1	1	1
	C	1	1	1	1	1	1
	B	1	1	1	1	1	1
	A	3	3	3	3	3	3

METRAL P/N	ROW	CONTACT CODE MOD. 1					
		1	2	3	4	5	6
88951-X03 SEE NOTE 9 LEAD FREE OPTION	D	3	3	3	3	3	3
	C	2	2	2	2	2	2
	B	2	2	2	2	2	2
	A	3	3	3	3	3	3

METRAL P/N	ROW	CONTACT CODE MOD. 1					
		1	2	3	4	5	6
88951-X04 SEE NOTE 9 LEAD FREE OPTION	D	4	4	4	4	4	4
	C	3	3	3	3	3	3
	B	3	3	3	3	3	3
	A	4	4	4	4	4	4

METRAL P/N	ROW	CONTACT CODE MOD. 1					
		1	2	3	4	5	6
88951-X05 SEE NOTE 9 LEAD FREE OPTION	D	3	3	3	3	3	3
	C	3	3	3	3	3	3
	B	3	3	3	3	3	3
	A	3	3	3	3	3	3

METRAL P/N	ROW	CONTACT CODE MOD. 1					
		1	2	3	4	5	6
88951-X06 SEE NOTE 9 LEAD FREE OPTION	D	2	2	2	2	2	2
	C	2	2	2	2	2	2
	B	2	2	2	2	2	2
	A	2	2	2	2	2	2

METRAL P/N	ROW	CONTACT CODE MOD. 1					
		1	2	3	4	5	6
88951-X07 SEE NOTE 9 LEAD FREE OPTION	D	3	3	3	3	3	3
	C	2	2	2	2	2	2
	B	2	2	2	2	2	2
	A	1	1	1	1	1	1

METRAL P/N	ROW	CONTACT CODE MOD. 1					
		1	2	3	4	5	6
88951-X08 SEE NOTE 9 LEAD FREE OPTION	D	3	3	3	3	3	3
	C	1	1	1	1	1	1
	B	1	1	1	1	1	1
	A	1	1	1	1	1	1

METRAL P/N	ROW	CONTACT CODE MOD. 1					
		1	2	3	4	5	6
88951-X09 SEE NOTE 9 LEAD FREE OPTION	D	4	4	4	4	4	4
	C	4	4	4	4	4	4
	B	4	4	4	4	4	4
	A	4	4	4	4	4	4

METRAL P/N	ROW	CONTACT CODE MOD. 1					
		1	2	3	4	5	6
88951-X10 SEE NOTE 9 LEAD FREE OPTION	D	1	1	1	1	1	1
	C	2	2	2	2	2	2
	B	3	3	3	3	3	3
	A	4	4	4	4	4	4

METRAL P/N	ROW	CONTACT CODE MOD. 1					
		1	2	3	4	5	6
88951-X11 SEE NOTE 9 LEAD FREE OPTION	D	3	3	3	3	3	3
	C	1	1	1	1	1	1
	B	3	3	3	3	3	3
	A	3	3	3	3	3	3

METRAL P/N	ROW	CONTACT CODE MOD. 1					
		1	2	3	4	5	6
88951-X12 SEE NOTE 9 LEAD FREE OPTION	D	4	4	4	4	4	4
	C	3	3	3	3	3	3
	B	2	2	2	2	2	2
	A	1	1	1	1	1	1

METRAL P/N	ROW	CONTACT CODE MOD. 1					
		1	2	3	4	5	6
88951-X13 SEE NOTE 9 LEAD FREE OPTION	D	1	1	1	1	1	1
	C	1	1	1	1	1	1
	B	3	3	3	3	3	3
	A	1	1	1	1	1	1

METRAL P/N	ROW	CONTACT CODE MOD. 1					
		1	2	3	4	5	6
88951-X15 SEE NOTE 9 LEAD FREE OPTION	D	2	2	2	2	2	2
	C	1	1	1	1	1	1
	B	2	2	2	2	2	2
	A	1	1	1	1	1	1

METRAL P/N	ROW	CONTACT CODE MOD. 1					
		1	2	3	4	5	6
88951-X16 SEE NOTE 9 LEAD FREE OPTION	D	2	2	2	2	2	2
	C	3	3	3	3	3	3
	B	4	4	4	4	4	4
	A	3	3	3	3	3	3

METRAL P/N	ROW	CONTACT CODE MOD. 1					
		1	2	3	4	5	6
88951-X17 SEE NOTE 9 LEAD FREE OPTION	D	2	2	2	2	2	2
	C	2	2	2	2	2	2
	B	2	2	2	2	2	2
	A	3	3	3	3	3	3

mat'l code				tolerances unless otherwise specified		CUSTOMER		FCI www.fciconnect.com	
ltr	ecn no.	dr	date	linear	0.X ±0.3	COPY		title METRAL SIGNAL HEADER 1 MOD. 4 ROW STB	
W					0.XX ±0.13	projection			
					.XXX ±.051				
				angles	0° ±2°			product family METRAL code	
				dr	T.BRUNGARD 11/19/99	scale		213	
				engr	M.STRAWSE 11/19/99	2:1		sheet	
				chr	M.STRAWSE 11/19/99			3	
				appd	M.STRAWSE 02/29/00				
sheet index		revision sheet							



METRAL P/N	ROW	CONTACT CODE MOD. 1					
		1	2	3	4	5	6
88951-X31 SEE NOTE 9 LEAD FREE OPTION	D	5	5	5	5	5	5
	C	5	5	5	5	5	5
	B	5	5	5	5	5	5
	A	5	5	5	5	5	5

METRAL P/N	ROW	CONTACT CODE MOD. 1					
		1	2	3	4	5	6
88951-X32 SEE NOTE 9 LEAD FREE OPTION	D	5	5	5	5	5	5
	C	5	5	5	5	5	5
	B	5	5	5	5	5	5
	A	7	7	7	7	7	7

METRAL P/N	ROW	CONTACT CODE MOD. 1					
		1	2	3	4	5	6
88951-X33 SEE NOTE 9 LEAD FREE OPTION	D	7	7	7	7	7	7
	C	6	6	6	6	6	6
	B	6	6	6	6	6	6
	A	7	7	7	7	7	7

METRAL P/N	ROW	CONTACT CODE MOD. 1					
		1	2	3	4	5	6
88951-X34 SEE NOTE 9 LEAD FREE OPTION	D	8	8	8	8	8	8
	C	7	7	7	7	7	7
	B	7	7	7	7	7	7
	A	8	8	8	8	8	8

METRAL P/N	ROW	CONTACT CODE MOD. 1					
		1	2	3	4	5	6
88951-X35 SEE NOTE 9 LEAD FREE OPTION	D	7	7	7	7	7	7
	C	7	7	7	7	7	7
	B	7	7	7	7	7	7
	A	7	7	7	7	7	7

METRAL P/N	ROW	CONTACT CODE MOD. 1					
		1	2	3	4	5	6
88951-X36 SEE NOTE 9 LEAD FREE OPTION	D	6	6	6	6	6	6
	C	6	6	6	6	6	6
	B	6	6	6	6	6	6
	A	6	6	6	6	6	6

METRAL P/N	ROW	CONTACT CODE MOD. 1					
		1	2	3	4	5	6
88951-X37 SEE NOTE 9 LEAD FREE OPTION	D	7	7	7	7	7	7
	C	6	6	6	6	6	6
	B	6	6	6	6	6	6
	A	5	5	5	5	5	5

METRAL P/N	ROW	CONTACT CODE MOD. 1					
		1	2	3	4	5	6
88951-X38 SEE NOTE 9 LEAD FREE OPTION	D	7	7	7	7	7	7
	C	5	5	5	5	5	5
	B	5	5	5	5	5	5
	A	5	5	5	5	5	5

METRAL P/N	ROW	CONTACT CODE MOD. 1					
		1	2	3	4	5	6
88951-X39 SEE NOTE 9 LEAD FREE OPTION	D	8	8	8	8	8	8
	C	8	8	8	8	8	8
	B	8	8	8	8	8	8
	A	8	8	8	8	8	8

METRAL P/N	ROW	CONTACT CODE MOD. 1					
		1	2	3	4	5	6
88951-X40 SEE NOTE 9 LEAD FREE OPTION	D	5	5	5	5	5	5
	C	6	6	6	6	6	6
	B	7	7	7	7	7	7
	A	8	8	8	8	8	8

METRAL P/N	ROW	CONTACT CODE MOD. 1					
		1	2	3	4	5	6
88951-X41 SEE NOTE 9 LEAD FREE OPTION	D	7	7	7	7	7	7
	C	5	5	5	5	5	5
	B	7	7	7	7	7	7
	A	7	7	7	7	7	7

METRAL P/N	ROW	CONTACT CODE MOD. 1					
		1	2	3	4	5	6
88951-X42 SEE NOTE 9 LEAD FREE OPTION	D	8	8	8	8	8	8
	C	7	7	7	7	7	7
	B	6	6	6	6	6	6
	A	5	5	5	5	5	5

METRAL P/N	ROW	CONTACT CODE MOD. 1					
		1	2	3	4	5	6
88951-X43 SEE NOTE 9 LEAD FREE OPTION	D	5	5	5	5	5	5
	C	5	5	5	5	5	5
	B	7	7	7	7	7	7
	A	5	5	5	5	5	5

METRAL P/N	ROW	CONTACT CODE MOD. 1					
		1	2	3	4	5	6
88951-X45 SEE NOTE 9 LEAD FREE OPTION	D	6	6	6	6	6	6
	C	5	5	5	5	5	5
	B	6	6	6	6	6	6
	A	5	5	5	5	5	5

METRAL P/N	ROW	CONTACT CODE MOD. 1					
		1	2	3	4	5	6
88951-X46 SEE NOTE 9 LEAD FREE OPTION	D	6	6	6	6	6	6
	C	7	7	7	7	7	7
	B	8	8	8	8	8	8
	A	7	7	7	7	7	7

METRAL P/N	ROW	CONTACT CODE MOD. 1					
		1	2	3	4	5	6
88951-X47 SEE NOTE 9 LEAD FREE OPTION	D	6	6	6	6	6	6
	C	6	6	6	6	6	6
	B	6	6	6	6	6	6
	A	7	7	7	7	7	7

mat'l code				tolerances unless otherwise specified		CUSTOMER		FCI www.fciconnect.com	
ltr	ecn no.	dr	date	linear	0.X ±0.3	COPY		projection	title METRAL SIGNAL HEADER 1 MOD. 4 ROW STB
W					0.XX ±0.13				
					.XXX ±.051				
				angles	0° ±2°				
				dr	T.BRUNGARD	11/19/99		product family METRAL	
				enrg	M.STRAWSE	11/19/99		code	
				chr	M.STRAWSE	11/19/99		213	
				appd	M.STRAWSE	02/29/00		sheet	
sheet index		revision sheet					scale	2:1	



A

METRAL P/N	ROW	CONTACT CODE MOD. 1					
		1	2	3	4	5	6
88951-X64 SEE NOTE 9 LEAD FREE OPTION	D	12	12	12	12	12	12
	C	11	11	11	11	11	11
	B	11	11	11	11	11	11
	A	12	12	12	12	12	12

2

METRAL P/N	ROW	CONTACT CODE MOD. 1					
		1	2	3	4	5	6
88951-X68 SEE NOTE 9 LEAD FREE OPTION	D	11	11	11	11	11	11
	C	9	9	9	9	9	9
	B	9	9	9	9	9	9
	A	9	9	9	9	9	9

3

METRAL P/N	ROW	CONTACT CODE MOD. 1					
		1	2	3	4	5	6
88951-X72 SEE NOTE 9 LEAD FREE OPTION	D	12	12	12	12	12	12
	C	11	11	11	11	11	11
	B	10	10	10	10	10	10
	A	9	9	9	9	9	9

4

METRAL P/N	ROW	CONTACT CODE MOD. 1					
		1	2	3	4	5	6
88951-X77 SEE NOTE 9 LEAD FREE OPTION	D	10	10	10	10	10	10
	C	10	10	10	10	10	10
	B	10	10	10	10	10	10
	A	11	11	11	11	11	11

A

METRAL P/N	ROW	CONTACT CODE MOD. 1					
		1	2	3	4	5	6
88951-X61 SEE NOTE 9 LEAD FREE OPTION	D	9	9	9	9	9	9
	C	9	9	9	9	9	9
	B	9	9	9	9	9	9
	A	9	9	9	9	9	9

METRAL P/N	ROW	CONTACT CODE MOD. 1					
		1	2	3	4	5	6
88951-X65 SEE NOTE 9 LEAD FREE OPTION	D	11	11	11	11	11	11
	C	11	11	11	11	11	11
	B	11	11	11	11	11	11
	A	11	11	11	11	11	11

METRAL P/N	ROW	CONTACT CODE MOD. 1					
		1	2	3	4	5	6
88951-X69 SEE NOTE 9 LEAD FREE OPTION	D	12	12	12	12	12	12
	C	12	12	12	12	12	12
	B	12	12	12	12	12	12
	A	12	12	12	12	12	12

METRAL P/N	ROW	CONTACT CODE MOD. 1					
		1	2	3	4	5	6
88951-X73 SEE NOTE 9 LEAD FREE OPTION	D	9	9	9	9	9	9
	C	9	9	9	9	9	9
	B	11	11	11	11	11	11
	A	9	9	9	9	9	9

METRAL P/N	ROW	CONTACT CODE MOD. 1					
		1	2	3	4	5	6
88951-X62 SEE NOTE 9 LEAD FREE OPTION	D	9	9	9	9	9	9
	C	9	9	9	9	9	9
	B	9	9	9	9	9	9
	A	11	11	11	11	11	11

METRAL P/N	ROW	CONTACT CODE MOD. 1					
		1	2	3	4	5	6
88951-X66 SEE NOTE 9 LEAD FREE OPTION	D	10	10	10	10	10	10
	C	10	10	10	10	10	10
	B	10	10	10	10	10	10
	A	10	10	10	10	10	10

METRAL P/N	ROW	CONTACT CODE MOD. 1					
		1	2	3	4	5	6
88951-X70 SEE NOTE 9 LEAD FREE OPTION	D	9	9	9	9	9	9
	C	10	10	10	10	10	10
	B	11	11	11	11	11	11
	A	12	12	12	12	12	12

METRAL P/N	ROW	CONTACT CODE MOD. 1					
		1	2	3	4	5	6
88951-X75 SEE NOTE 9 LEAD FREE OPTION	D	10	10	10	10	10	10
	C	9	9	9	9	9	9
	B	10	10	10	10	10	10
	A	9	9	9	9	9	9

METRAL P/N	ROW	CONTACT CODE MOD. 1					
		1	2	3	4	5	6
88951-X63 SEE NOTE 9 LEAD FREE OPTION	D	11	11	11	11	11	11
	C	10	10	10	10	10	10
	B	10	10	10	10	10	10
	A	11	11	11	11	11	11

METRAL P/N	ROW	CONTACT CODE MOD. 1					
		1	2	3	4	5	6
88951-X67 SEE NOTE 9 LEAD FREE OPTION	D	11	11	11	11	11	11
	C	10	10	10	10	10	10
	B	10	10	10	10	10	10
	A	9	9	9	9	9	9

METRAL P/N	ROW	CONTACT CODE MOD. 1					
		1	2	3	4	5	6
88951-X71 SEE NOTE 9 LEAD FREE OPTION	D	11	11	11	11	11	11
	C	9	9	9	9	9	9
	B	11	11	11	11	11	11
	A	11	11	11	11	11	11

METRAL P/N	ROW	CONTACT CODE MOD. 1					
		1	2	3	4	5	6
88951-X76 SEE NOTE 9 LEAD FREE OPTION	D	10	10	10	10	10	10
	C	11	11	11	11	11	11
	B	12	12	12	12	12	12
	A	11	11	11	11	11	11

mat'l code				tolerances unless otherwise specified		CUSTOMER		FCI www.fciconnect.com	
ltr	ecn no.	dr	date	linear	0.X ±0.3	projection	COPY	title	METRAL SIGNAL HEADER 1 MOD. 4 ROW STB
W					0.XX ±0.13				
					.XXX ±.051				
				angles	0° ±2°		MM	product family	METRAL
				dr	T.BRUNGARD 11/19/99				
				engr	M.STRAWSE 11/19/99				
				chr	M.STRAWSE 11/19/99	scale	2:1	size	A
				appd	M.STRAWSE 02/29/00				
sheet	revision							cage code	22526
index	sheet								

B



METRAL P/N	ROW	CONTACT CODE MOD. 1					
		1	2	3	4	5	6
88951-X78 SEE NOTE 9 LEAD FREE OPTION	D	2	2	2	2	2	2
	C	2	2	2	2	2	2
	B	4	4	4	4	4	4
	A	2	2	2	2	2	2

METRAL P/N	ROW	CONTACT CODE MOD. 1					
		1	2	3	4	5	6
88951-X79 SEE NOTE 9 LEAD FREE OPTION	D	3	3	3	3	3	3
	C	4	4	4	4	4	4
	B	13	13	13	13	13	13
	A	13	13	13	13	13	13

METRAL P/N	ROW	CONTACT CODE MOD. 1					
		1	2	3	4	5	6
88951-X80 SEE NOTE 9 LEAD FREE OPTION	D	3	3	3	3	3	3
	C	3	3	3	3	3	3
	B	13	13	13	13	13	13
	A	3	3	3	3	3	3

METRAL P/N	ROW	CONTACT CODE MOD. 1					
		1	2	3	4	5	6
88951-X81 SEE NOTE 9 LEAD FREE OPTION	D	13	13	13	13	13	13
	C	13	13	13	13	13	13
	B	13	13	13	13	13	13
	A	13	13	13	13	13	13

METRAL P/N	ROW	CONTACT CODE MOD. 1					
		1	2	3	4	5	6
88951-X82 SEE NOTE 9 LEAD FREE OPTION	D	9	9	9	9	9	9
	C	9	9	9	9	9	9
	B	9	9	9	9	9	9
	A	9	9	9	9	9	9

METRAL P/N	ROW	CONTACT CODE MOD. 1					
		1	2	3	4	5	6
88951-X83 SEE NOTE 9 LEAD FREE OPTION	D	9	9	9	9	9	9
	C	9	9	9	9	9	9
	B	9	9	9	9	9	9
	A	11	11	11	11	11	11

METRAL P/N	ROW	CONTACT CODE MOD. 1					
		1	2	3	4	5	6
88951-X84 SEE NOTE 9 LEAD FREE OPTION	D	12	12	12	12	12	12
	C	11	11	11	11	11	11
	B	11	11	11	11	11	11
	A	12	12	12	12	12	12

METRAL P/N	ROW	CONTACT CODE MOD. 1					
		1	2	3	4	5	6
88951-X85 SEE NOTE 9 LEAD FREE OPTION	D	11	11	11	11	11	11
	C	11	11	11	11	11	11
	B	11	11	11	11	11	11
	A	11	11	11	11	11	11

METRAL P/N	ROW	CONTACT CODE MOD. 1					
		1	2	3	4	5	6
88951-X86 SEE NOTE 9 LEAD FREE OPTION	D	10	10	10	10	10	10
	C	10	10	10	10	10	10
	B	12	12	12	12	12	12
	A	10	10	10	10	10	10

METRAL P/N	ROW	CONTACT CODE MOD. 1					
		1	2	3	4	5	6
88951-X87 SEE NOTE 9 LEAD FREE OPTION	D	10	10	10	10	10	10
	C	10	10	10	10	10	10
	B	10	10	10	10	10	10
	A	10	10	10	10	10	10

METRAL P/N	ROW	CONTACT CODE MOD. 1					
		1	2	3	4	5	6
88951-X88 SEE NOTE 9 LEAD FREE OPTION	D	12	12	12	12	12	12
	C	12	12	12	12	12	12
	B	12	12	12	12	12	12
	A	12	12	12	12	12	12

METRAL P/N	ROW	CONTACT CODE MOD. 1					
		1	2	3	4	5	6
88951-X89 SEE NOTE 9 LEAD FREE OPTION	D	6	6	6	6	6	6
	C	6	6	6	6	6	6
	B	8	8	8	8	8	8
	A	6	6	6	6	6	6


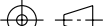
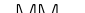
mat'l code				tolerances unless otherwise specified		CUSTOMER		FCI			
ltr	ecr no.	dr	date	linear	0.X ±0.3	projection	COPY	www.fciconnect.com			
W					0.XX ±0.13			title			
					.XXX ±.051			METRAL SIGNAL HEADER			
				angles	0° ±2°	MM	scale	I MOD. 4 ROW STB			
				dr	T.BRUNGARD 11/19/99			product family			
				enqr	M.STRAWSE 11/19/99			METRAL			
				chr	M.STRAWSE 11/19/99	2:1	A	size			
				appd	M.STRAWSE 02/29/00			dwg no			
								88951			
sheet	revision							code			
index	sheet							213			
								sheet			
								6			



PRODUCT NUMBER
88951-XYX
88951-XYLF

NOTES:

- FOR DIM A AND B SEE SHEET 2 AND UP.
- BODY MATERIAL: LIQUID CRYSTAL
POLYMER 30 % GLASS.
FLAME RETARDANT ACC. UL 94-V0.
- PIN MATERIAL:
PHOSPHOR BRONZE.
- PLATING ON SOLDER TO BOARD:
88951-XYX IS SnPb
88951-XYLF IS SN (LEAD FREE)
PLATING ON CONTACT AREA CONFORMS TO PERFORMANCE
LEVEL SHOWN IN TABLE.
- PRODUCT MARKING:
PART NUMBER DESIGNATION & BATCH I.D.
- ALL PRODUCTS WITH PART NUMBERS SHOWN IN
SUBSEQUENT TABLES WILL BE PACKAGED IN TUBES.
IF TRAY PACKAGING IS REQUIRED, A SUFFIX "P"
WILL BE ADDED TO THE END OF THE PART NUMBER.
EXAMPLE: XXXXX-XXXP OR XXXXX-XXXPLF
- PRODUCT SPECIFICATION GS-12-180
APPLICATION SPECIFICATION BUS-20-074
- THE PRODUCTS WHERE THE PART NUMBER ENDS IN LF MEET THE
EUROPEAN UNION DIRECTIVES AND OTHER COUNTRY REGULATIONS
AS DESCRIBED IN GS-22-008.
- FOR LEAD FREE PART NUMBERS, ADD AN "LF" SUFFIX.
EXAMPLE: 88951-X0ILF
- ALL PRODUCTS EXCEPT THOSE WITH PART NUMBERS CONTAINING
(DRAWING NO.)-N1--- OR (DRAWING NO.)-N5---WILL WITHSTAND EXPOSURE
TO 260°C FOR 60 SECONDS IN A CONVECTION, INFRA-RED OR
VAPOR PHASE REFLOW OVEN. PART NUMBERS (DRAWING NO.)-N1---
AND (DRAWINGS NO.)-N5---WILL NOT WITHSTAND REFLOW AND Au CONTACT
SURFACE OF THE CONTACTS SHALL BE EXPOSED TO A MAXIMUM 140°C FOR
NO LONGER THAN 15 SECONDS IN A WAVE SOLDER APPLICATION.

mat'l code				tolerances unless otherwise specified		CUSTOMER				www.fciconnect.com			
lfr	ecn no.	dr	date	linear	0.X ± 0.3		COPY			titleMETRAL SIGNAL HEADER 1 MOD. 4 ROW STB			
W					0.XX ± 0.13								
					.XXX ± .051								
				angles	0° ± 2°								
				dr	T.BRUNGARD	11/19/99	 MM			product familyMETRAL		code213	
				enrg	M.STRAWSE	11/19/99				size			dwg no88951
				chr	M.STRAWSE	11/19/99				scale			
				appd	M.STRAWSE	02/29/00	1:1		A		sheet7		
sheet index		revision sheet											