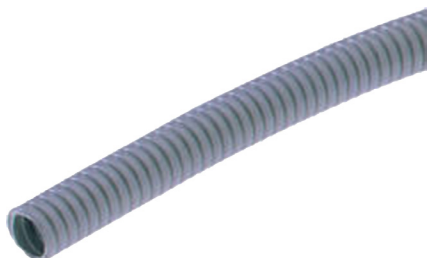


RoHS
Compliant



Application:

An installation conduit for liquid-tight installations, corresponding to shape I, tested according to DIN VDE 57605. The metal conduit with a structure corresponding to SILVYN® AS and with additional high-quality polymer (PVC). Outer sheath is weather-proof, watertight, silicone- and cadmium free, and very resistant to oils, acids, and sea water, with a high flexibility as well as resistance to extension and compression. It is ideal for use in machine and equipment manufacture, for protection in wet areas and outdoors.

Specifications:

Conduit Colour	: Grey
Conduit Material	: PVC (Polyvinyl Chloride), Steel
Coating	: Zinc
For Use With	: Cables
Operating Temperature	: -25°C to +80°C

Part Number Table

Description	PG Size mm	Internal Ø × External Ø in mm	Bending Radius mm	Suitable for SILVYN® MSK-M	Suitable for SILVYN® US-M	Suitable for SILVYN® US/US-EDU-AS/ US MS-DR	PU Ring in m	Part Number
Conduit, Metal / Plastic, PG9, 10m	9	10 × 14	40	16 × 1.5	12 × 1.5	9	10	64400110
Conduit, Metal / Plastic, PG11, 10m	11	13 × 17	45	20 × 1.5	16 × 1.5	11	10	64400120
Conduit, Metal / Plastic, PG13.5, 10m	13.5	15 × 19	52			13,5	10	64400130
Conduit, Metal / Plastic, PG16, 10m	16	17 × 21	58	25 × 1.5	20 × 1.5	16	10	64400140

Important Notice : This data sheet and its contents (the "Information") belong to the members of the Premier Farnell group of companies (the "Group") or are licensed to it. No licence is granted for the use of it other than for information purposes in connection with the products to which it relates. No licence of any intellectual property rights is granted. The Information is subject to change without notice and replaces all data sheets previously supplied. The Information supplied is believed to be accurate but the Group assumes no responsibility for its accuracy or completeness, any error in or omission from it or for any use made of it. Users of this data sheet should check for themselves the Information and the suitability of the products for their purpose and not make any assumptions based on information included or omitted. Liability for loss or damage resulting from any reliance on the Information or use of it (including liability resulting from negligence or where the Group was aware of the possibility of such loss or damage arising) is excluded. This will not operate to limit or restrict the Group's liability for death or personal injury resulting from its negligence. pro-ELEC is the registered trademark of the Group. © Premier Farnell plc 2012.