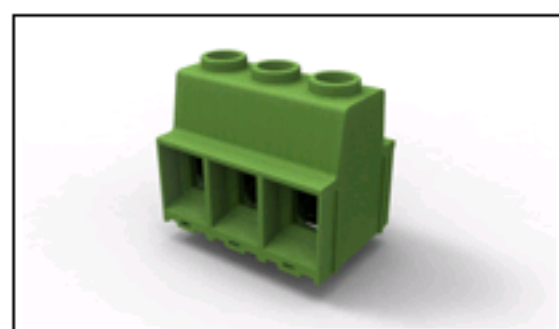




## 1-1986713-2 Product Details

[Share](#)[Print](#)[Email](#)

1-1986713-2

TE Internal Number: 1-1986713-2

 [Active](#)

### Terminal Block Connectors

 [Always EU RoHS/ELV Compliant \(Statement of Compliance\)](#)

#### Product Highlights:

- Connector
- Type of Connector = Wire Receptacle
- Not Shrouded
- Housing Color = Green
- Side Stackable

[View all Features](#)

#### Quick Links

- ▶ [Check Pricing & Availability](#)
- ▶ [Search for Tooling](#)
- ▶ [Product Feature Selector](#)
- ▶ [Contact Us About This Product](#)

[Add to My Part List](#) [Request Sample](#) [Find Similar Products](#) [Buy Product](#)

### Documentation & Additional Information

#### Product Drawings:

- [POWER TERMINAL BLOCK, SOLDERABLE UP TO 275DEG C DOUB...](#) (PDF, English)

#### Catalog Pages/Data Sheets:

- None Available

#### Product Specifications:

- None Available

#### Application Specifications:

- None Available

#### Instruction Sheets:

- None Available

#### CAD Files:

- None Available

#### Additional Information:

- [Product Line Information](#)

#### Related Products:

- [Tooling](#)

[List all Documents](#)

### Product Features (Please use the Product Drawing for all design activity)

#### Product Type Features:

- [Product Type](#) = Connector
- [Type of Connector](#) = Wire Receptacle
- [Shrouded](#) = No
- [Mount Angle](#) = Vertical
- UL File Number = E60677

#### Electrical Characteristics:

- Current Rating, Max. (A) = 130
- Voltage (VAC) = 600

#### Body Features:

- [Side Stackable](#) = Yes
- [Number of Positions](#) = 12
- [Number of Rows](#) = Single
- [Centerline \(mm \[in\]\)](#) = 15.00 [0.591]
- [Wire Entry Diameter \(Solid Wire\) \(mm²\)](#) = 0.05 - 35.00
- [Wire Entry Diameter \(Stranded Wire\) \(mm²\)](#) = 0.05 - 25.00
- [Wire Entry Angle](#) = Side
- [Interlock](#) = Without
- Wire Range (mm [AWG]) = 0.50-41.00 [20-1]
- Pin Length (mm [in]) = 5.00 [0.197]

#### Contact Features:

- [Threaded Flange](#) = Without
- [Screw Flange](#) = Without
- Contact Plating, Mating Area, Material = Tin over Steel

#### Housing Features:

- [Housing Color](#) = Green
- Housing Material = Polyamide

#### Industry Standards:

- [RoHS/ELV Compliance](#) = RoHS compliant, ELV compliant
- [Lead Free Solder Processes](#) = Wave solder capable to 240°C, Wave solder capable to 260°C, Wave solder capable to 265°C
- RoHS/ELV Compliance History = Always was RoHS compliant

#### Other:

- Brand = Tyco Electronics

### Corporate Information

[About TE](#)[Investors](#)[News Room](#)[Supplier Portal](#)[Careers](#)

### Quick Links

[Check Distributor Inventory](#)[Cross Reference Products](#)[Find Documents & Drawings](#)[Product Compliance Support Center](#)[Site Map](#)

### Customer Support

[Email or Chat With Us](#)[Find a Phone Number](#)[Search Knowledge Base](#)[Manage Your Account](#)

### Keep Me Informed

Receive TE News, Events & Technology Updates

