

# MICRO SWITCH

A DIVISION OF MINNEAPOLIS-HONEYWELL REGULATOR COMPANY  
FREDERICK, ILLINOIS

FED. MFR. CODE 91929

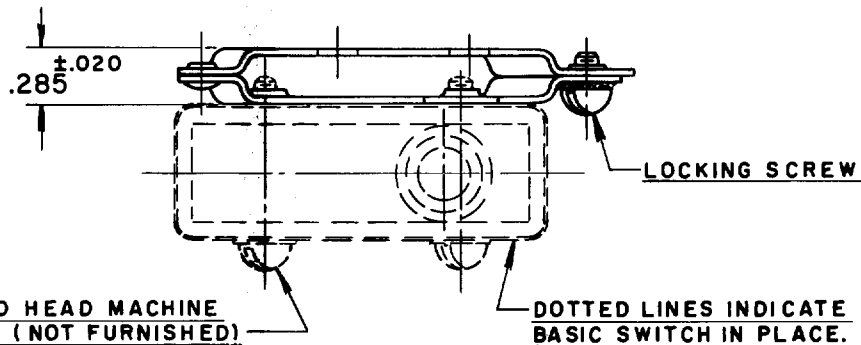
## BRACKET — MOUNTING

CATALOG LISTING

8MA2

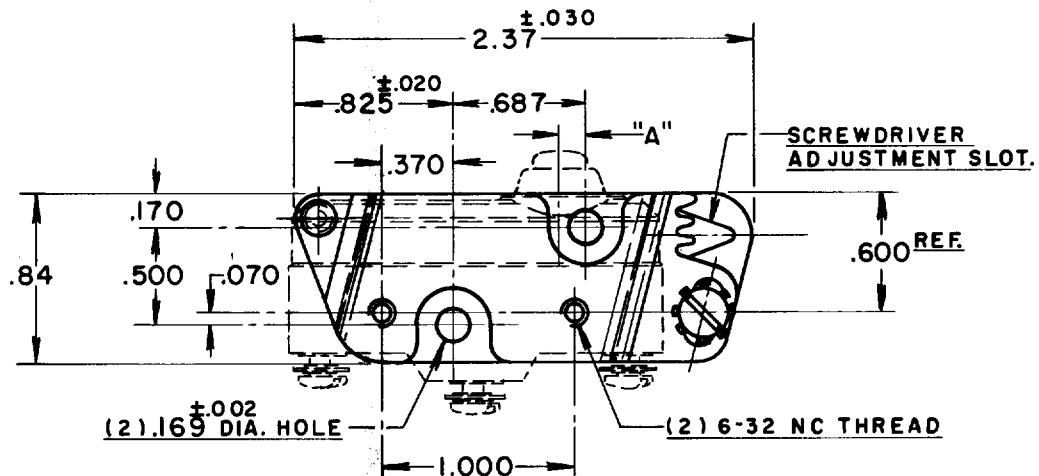
### PLUNGER LOCATION

BASIC SWITCH TYPE	DIM. "A"
STANDARD	.057
TYPE Z	.140
TYPE A	.307



(2) 6-32 NC x .875<sup>REF</sup> ROUND HEAD MACHINE SCREW AND LOCKWASHER (NOT FURNISHED)

DOTTED LINES INDICATE BASIC SWITCH IN PLACE.



### NOTE -

- 1- BRACKET IS SHOWN AT APPROX. MIDPOINT OF TOTAL .080 ADJUSTMENT OF OPERATING POSITION.
- 2- TO ADJUST OPERATING POSITION.
  - (a) LOOSEN LOCKING SCREW SLIGHTLY.
  - (b) INSERT SCREWDRIVER WITH .188 TO .250 WIDE TIP IN ADJUSTMENT SLOT AND ROTATE IN DESIRED DIRECTION.
  - (c) TIGHTEN LOCKING SCREW

THIS DRAWING COVERS A PROPRIETARY ITEM AND IS THE PROPERTY OF MICRO SWITCH, A DIVISION OF HONEYWELL. THIS DRAWING IS NOT TO BE COPIED OR USED WITHOUT THE APPROVAL OF MICRO SWITCH.

### CHARACTERISTICS

### ELECTRICAL DATA

### SCALE — FULL

#### CONTACT ARRANGEMENT

#### BREAK DISTANCE

#### DO NOT SCALE PRINT

#### UNLESS OTHERWISE SPECIFIED

DIMENSIONS ARE IN INCHES

#### TOLERANCES ARE:

ONE PLACE	(.0)	±.030
TWO PLACE	(.00)	±.018
THREE PLACE	(.000)	±.008
ANGLES		±

#### WEIGHT

8MA2

M

DRAWING NUMBER

ISSUE

REPLACES

RELEASE NO. SR 6518

CHECK

REVISIONS

1

2

3

4

5

6

7

8

9

10

11

12

13

14

15

16

17

18

19

20

21

22

23

24

25

26

27

28

29

30

31

32

33

34

35

36

37

38

39

40

41

42

43

FO-50378

DRAWN

R.L.Z.

1, JUNE '57

GCH

13 JUNE '57

BLS

4 JUNE '57

# Mouser Electronics

Authorized Distributor

Click to View Pricing, Inventory, Delivery & Lifecycle Information:

[Honeywell:](#)

[8MA2](#)