

MICRO SWITCH

A DIVISION OF MINNEAPOLIS-HONEYWELL REGULATOR COMPANY
FREEPORT, ILLINOIS

FED. INFR. CODE E9 89 229

PACKET

CATALOG LISTING

9PA7 ★

9PA7

M

DRAWING
NUMBER

ISSUE

1

REPLACES

RELEASE NO. SR 3006

CHECK

REVISIONS

2, JAN '62

EFH

CHECK

2, JAN '62

DRAW

61

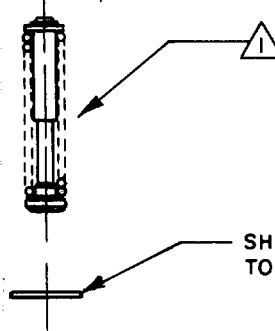
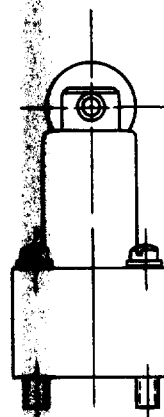
CHECK

DEC 29

K L B

DRAWN

O-50378

SHIMS TO BE USED AS NEEDED
TO LIMIT FREE PLAY (4)

NOTE -

① - OVERTRAVEL ASSEMBLY AND MOUNTING SCREWS FURNISHED UNASSEMBLED FROM BUSHING ASSEMBLY

THIS DRAWING COVERS A PROPRIETARY ITEM AND IS THE PROPERTY OF MICRO SWITCH, A DIVISION OF MINNEAPOLIS-HONEYWELL REGULATOR CO. THIS DRAWING IS NOT TO BE COPIED OR USED WITHOUT THE APPROVAL OF MICRO SWITCH.

CHARACTERISTICS

ELECTRICAL DATA

SCALE 1/2 TO 1

CONTACT ARRANGEMENT

BREAK DISTANCE

DO NOT SCALE PRINT

UNLESS OTHERWISE
SPECIFIED

DIMENSIONS ARE IN INCHES

TOLERANCES ARE:

ONE PLACE	(.0)	±.030
TWO PLACE	(.00)	±.015
THREE PLACE	(.000)	±.005
ANGLES		±

WEIGHT

Mouser Electronics

Authorized Distributor

Click to View Pricing, Inventory, Delivery & Lifecycle Information:

[Honeywell:](#)

[9PA7](#)