

NMX-350 Power Factor Corrected Multiple Output, Forced Current Sharing



Option V

SPECIFICATIONS:

INPUT

Ac Input: 90-264 Vac continuous range, 47 to 63 Hz. Internally fused for 7 A.
Power Factor: 0.99 typical at full load. Meets EN61000-3-2.

Inrush: Cold start ac current is less than 30 A at 115 Vac and 60 A at 230 Vac. Limited by thermistor.

Brownout Protection: Holds regulation to 85 Vac.

Holdup Time: 20 ms minimum after removal of power at full load.

Efficiency: 75% typical.

Ac Power Fail: Provides TTL "0" 5 ms before output voltage goes out of regulation band upon loss of ac power.

OUTPUT

Adjustability: Outputs #1 and 2 user adjustable $\pm 5\%$ minimum. Output #3 tracks #2; initial accuracy $\pm 4\%$. Output #4 user adjustable $\pm 5\%$ minimum, or $\pm 5\%$ only if voltage is 5.2 V.

Line & Load Reg: Outputs #1, 2, and 4 hold $\pm 1\%$ over ac input range and 0 to 100% load change. Output #3 requires 20% minimum load on outputs #2 and 3 to hold $\pm 4\%$.

Ripple & Noise: Less than 1% p-p or 100 mV, whichever is greater.

Remote Sense (Output #1): Compensates for 250 mV total line drop. Open sense lead protection.

Redundancy: External OR-ing diodes and forced current sharing on output #1 provide "N+1" capability. Remote sense (+S) compensates for additional 0.6 V diode voltage drop. When the current sharing terminal is connected between units, current sharing remains within 10% of the unit's full output current rating.

Temperature Coefficient (Outputs #1, 2, and 4): 0.02% per degree C.

Stability: 0.1% over 8 hours after 30 minutes warm-up.

Transient Response (Outputs #1, 2, and 4): Output voltage returns to within 1% in less than 500 μ s for a 50% load change. Peak transient does not exceed 5%.

Overload Protection: All outputs are protected against overload and short circuit. Automatic recovery upon removal of fault.

Overvoltage Protection (Outputs #1 and 2): Protects load against power supply induced overvoltage. Trip point is factory set so that output voltage cannot exceed 136% of nominal.

Peak Output Current: Dual current ratings define continuous and peak currents. The peak current shown can be delivered for a maximum period of 30 seconds.

Remote Inhibit: Contact closure to the negative sense line or a TTL level "0" turns off DC outputs.

Dc Power Good: Provides a TTL "1" open collector when output #1 is above 4.6 V nominal.

Reverse Voltage: Protected against reverse voltage up to supply current rating.

ENVIRONMENTAL

Thermal Protection: Shuts down power supply if overheated. Automatic recovery.

Temperature Range: 0° to 50°C at full ratings.

Safety Agencies: Most models are approved to UL1950; CSA 22.2 #234; IEC 950 and TÜV EN60950, Class 1 SELV., CE 72/23/EEC/93/68EEC (low voltage directive).

Conducted RFI: Meets FCC Part 15, Subpart J, Class A; EN55022 Class B; CISPR 22 Class B.

Features:

- Forced current sharing for N + 1 redundancy
- Universal ac input
- 0.99 typical power factor
- Dual converter design eliminates interaction between logic and auxiliary outputs
- Low ripple and noise on all outputs
- Dc power good and ac power fail signals
- True remote inhibit

Output Isolation: Isolated from ground 50 Vdc.

Cooling: 30 cfm required to achieve full ratings.

OPTIONS:

Option "E", Euro Style Connector: Provides input and auxiliary output connections accepting 14 to 24 AWG wire.

Option "F", Fan/Cover Assembly: Cover with integral ball-bearing fan provides proper cooling to achieve full ratings at 50°C ambient temperature. 1.85" dimension increases to 3.08".

Option "V", Fan/Cover Assembly: Low profile, end venting cover with integral ball-bearing fan. 1.85" dimension increases to 2.50", and 8.05" dimension increases to 9.40".

AC INPUT (90-264 Vac Continuous Range)

FUNCTION	115 Vac	230 Vac	CONNECTOR
TB1- (L)	Line	Line 1	Barrier strip
TB1- (N)	Neutral	Line 2	#6-32 screws
TB1- (GND)	Safety Ground	Safety Ground	0.325" Centers

DC OUTPUT

FUNCTION	LOCATION	NOTES	CONNECTOR
Output #1	Terminal marked +V	Main output	Bus bars #8-32 screws
	Terminal marked -V	Rtn (common)	
Output #2	J1-1, 6		AMP #770743-1 mates with con- nector 770580-1with sockets #171639-1 (AWG #20 to #16)
	J1-2, 7	Rtn (common)	
Output #3	J1-3, 8		
	J1-2, 7	Rtn (common)	
Output #4	J1-4, 9	(+) Floating Output	
	J1-5, 10	(-) Floating Output	

STATUS AND CONTROL

FUNCTION	LOCATION	NOTES	CONNECTOR
Remote Sense	J2-6	Output #1 Sense	AMP MTA type #640456-6 pin header (locking)
	J2-5	Output #1 Sense Rtn	
Dc Power Good	J2-4	Reference to Common	
Inhibit	J2-2	when #1 Sense Rtn is terminated	
Current Share	J2-1		AMP MTA type #640456-2 pin header (locking)
Ac Power Fail	J2-3	Reference to Common	
Aux. Fan Voltage (Not available with "V" or "F" options)	J3-2	+12V @ 0.5A Output	
	J3-1	Rtn (Common)	



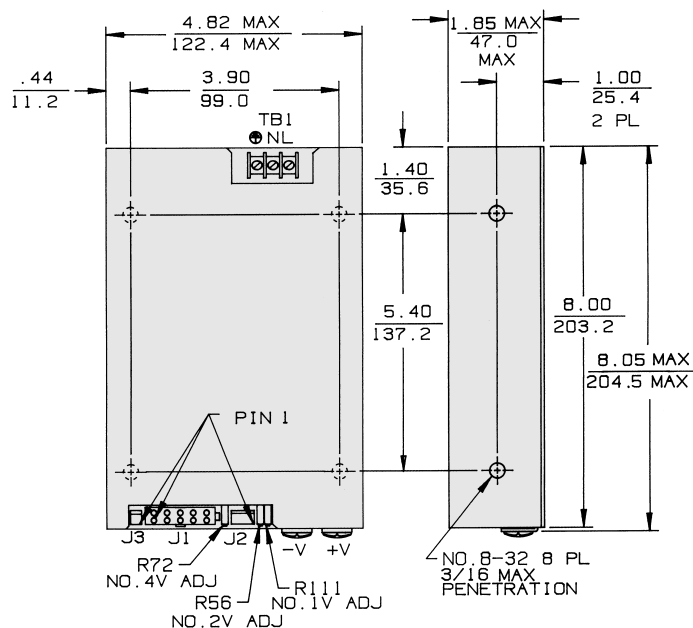
Condor D.C. Power Supplies, Inc., A subsidiary of SL Industries, Inc.

2311 Statham Parkway, Oxnard, CA 93033 • 805-486-4565 • (800) 235-5929 • Fax: (805) 487-8911 • www.condorpower.com

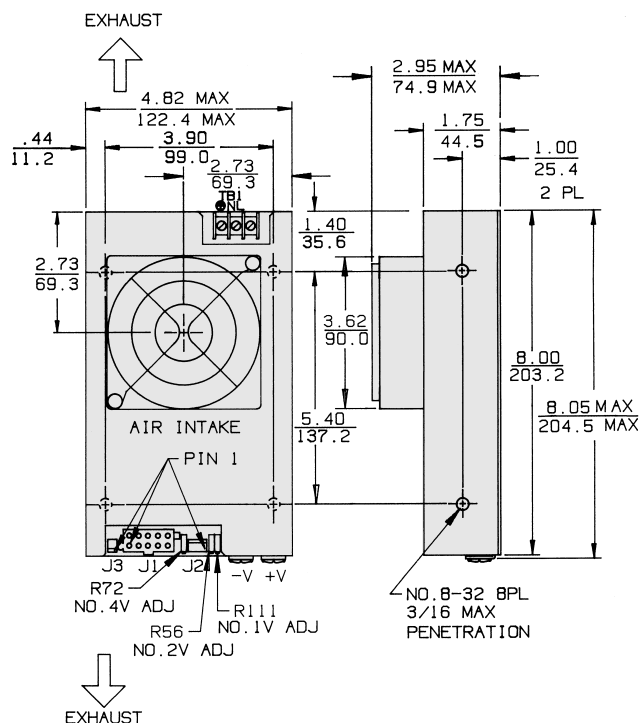
NMX-350 Power Factor Corrected Multiple Output, Forced Current Sharing

Commercial Model	Power Out	Output No.	Output	Output Maximum	OVP Setpoint
NMX-353-0512	350	1	+5 V	50 A	<6.8 V
		2	+12 V	8/12 A pk	<16.3 V
		3	-12 V	4 A	
NMX-354-1205	350	1	+5 V	50	<6.8 V
		2	+12 V	8/12 A pk	<16.3 V
		3	-12 V	4 A	
		4	5.2 V	5 A	
NMX-354-1212	350	1	+5 V	50 A	<6.8 V
		2	+12 V	8/12 A pk	<16.3 V
		3	-12 V	4 A	
		4	12 V	5 A	
NMX-354-1224	350	1	+5 V	50 A	<6.8 V
		2	+12 V	8/12 A pk	<16.3 V
		3	-12 V	4 A	
		4	24 V	3 A	

NMX-350
2.6 lb - 1.2 kg



NMX-350 with Option F
3.0 lb - 1.4 kg



Dimensions: Inches
Millimeters

