

DESIGNED & DIMENSIONED
IN MILLIMETERS[INCHES]

T2M-1XX-XX-X-D-XX-XX

NO OF POSITIONS

**02, **04, -05, -07, -10, -15,
-20, -25, & -30 (PER ROW)
AVAILABLE AS STANDARD;
OTHER SIZES BETWEEN -05
THRU -50 AVAILABLE AS ASO

LEAD STYLE

-01

PLATING SPECIFICATION

-L: 10μ" SELECTIVE GOLD IN CONTACT
AREA, MATTE TIN ON TAIL
(USE T-1S13-XX-L-2)
-S: 30μ" SELECTIVE GOLD IN CONTACT
AREA, MATTE TIN ON TAIL
(USE T-1S13-XX-S-2)

ROW SPECIFICATION

-D: DOUBLE ROW

OPTION

-DS: DUAL SCREW DOWN (SEE FIG 6, SHT 3)
(FOR 1.57mm [.062] PCB)
(AVAILABLE 5-30 POSITIONS ONLY)
(NOT AVAILABLE WITH -RA, -WT OPTIONS)
(USE T-1S13-04-X-2 WITH TH OPTION
AND TI-M2-4-VSFM-T,
USE T-1S13-20-X-2 WITH SM OPTION
AND TI-M2-4-VSFM-T)
-K: POLYIMIDE FILM (-SM OPTION ONLY)
(USE K-DOT-.295-.406-.005, SEE FIG 4)
(NOT AVAILABLE IN -02 OR -04 POSITIONS)
-TR: TAPE & REEL (-SM OPTION ONLY)
(NOT AVAILABLE IN -02 OR -04 POSITIONS)
-WT: WELD TAB : (USE WT-25-07-T);
(-SM, SEE FIG 3, SHT 2)
(-TH, SEE FIG 5, SHT 2)
-RA: (USE WT-81-01-T)

OPTION

-TH: THROUGH HOLE (SEE FIG 1)
-RA: RIGHT ANGLE (SEE FIG 2)
-SM: SURFACE MOUNT (SEE FIG 3, SHT 2)

** = ONLY AVAILABLE WITH -SM-WT OR -RA-WT OPTIONS

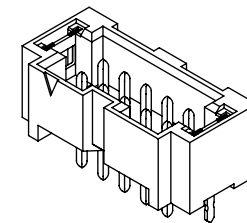
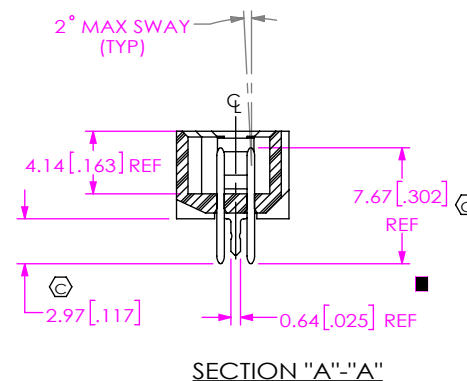
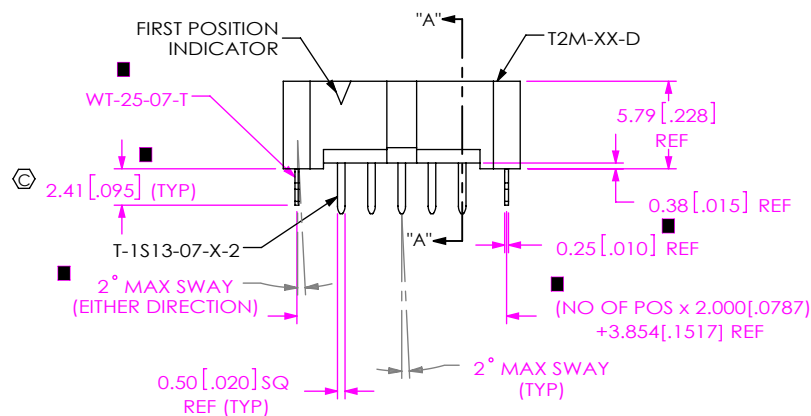
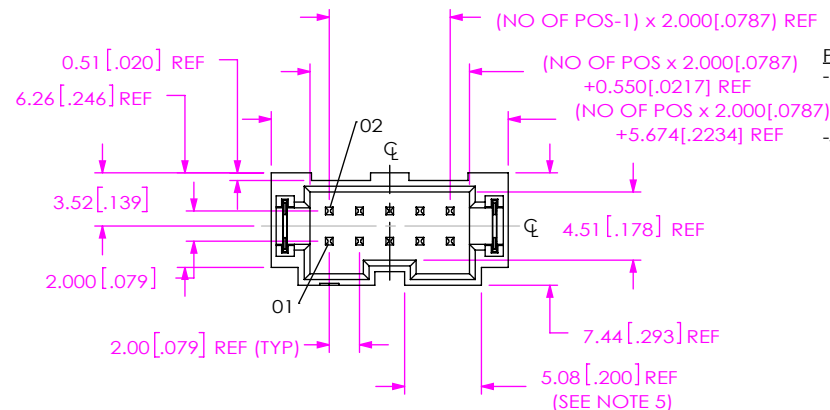


FIG 1

T2M-105-01-X-D-TH-XX

(■ = ONLY APPLICABLE WITH -WT OPTION)

NOTES:

1. Ⓢ REPRESENTS A CRITICAL DIMENSION.
2. MINIMUM PUSHOUT FORCE: 4.44N[1.0 LB].
3. POST HEIGHT VARIATION BETWEEN ANY TWO PINS: 0.13[.005] MAXIMUM.
4. MAXIMUM PIN ROTATION IN BODY TO BE 2°.
5. DUAL POLARIZATION SLOT NOT AVAILABLE ON CONNECTOR WITH LESS THAN 5 POSITIONS.
6. MINIMUM RETENTION FORCE FOR WELD TABS: 4.44N[1.0 LB].

UNLESS OTHERWISE SPECIFIED,
DIMENSIONS ARE IN MILLIMETERS.

TOLERANCES ARE:

DECIMALS ANGLES
X.X: ±0.3 [.01] 2°
X.XX: ±0.13 [.005]
X.XXX: ±0.051 [.0020]

PROPRIETARY NOTE

THIS DOCUMENT CONTAINS CONFIDENTIAL AND PROPRIETARY INFORMATION AND ALL DESIGN, MANUFACTURING, REPRODUCTION, USE, PATENT RIGHTS AND SALES RIGHTS ARE EXPRESSLY RESERVED BY SAMTEC, INC. THIS DOCUMENT SHALL NOT BE DISCLOSED, IN WHOLE OR PART, TO ANY UNAUTHORIZED PERSON OR ENTITY NOR REPRODUCED, TRANSFERRED OR INCORPORATED IN ANY OTHER PROJECT IN ANY MANNER WITHOUT THE EXPRESS WRITTEN CONSENT OF SAMTEC, INC.

MATERIAL: DO NOT SCALE DRAWING
INSULATOR: LCP, COLOR: BLACK
TERMINAL: PHOS BRONZE
WELD TAB: PHOS BRONZE
KAPTON: POLYIMIDE FILM

SHEET SCALE: 2:1

samtec

520 PARK EAST BLVD, NEW ALBANY, IN 47150
PHONE: 812-944-6733 FAX: 812-948-5047
e-Mail: info@SAMTEC.com code 55322

DESCRIPTION:

2mm SHROUDED TERMINAL STRIP

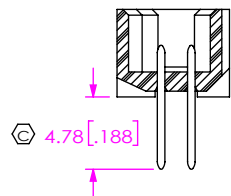
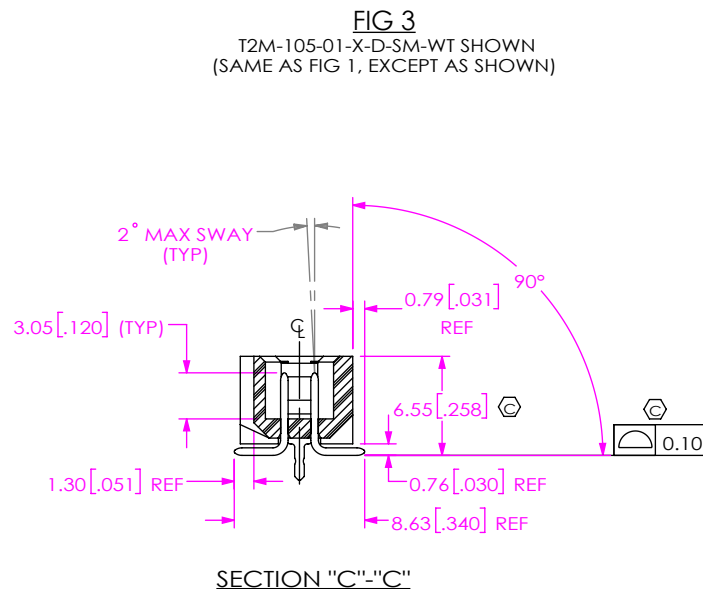
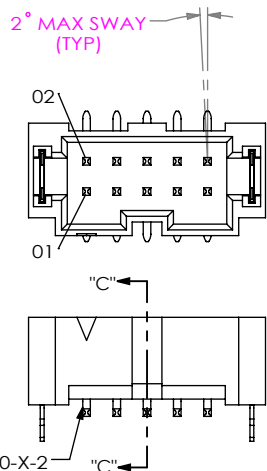
DWG. NO.

T2M-1XX-XX-X-D-XX-XX

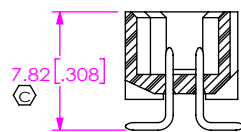
BY: J. BORGELT

3/23/09

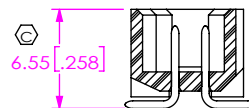
SHEET 1 OF 3



-SM IN PROCESS 1



-SM IN PROCESS 2



-SM IN PROCESS 3

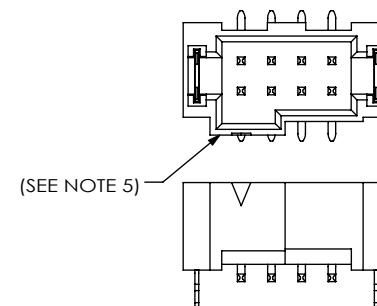
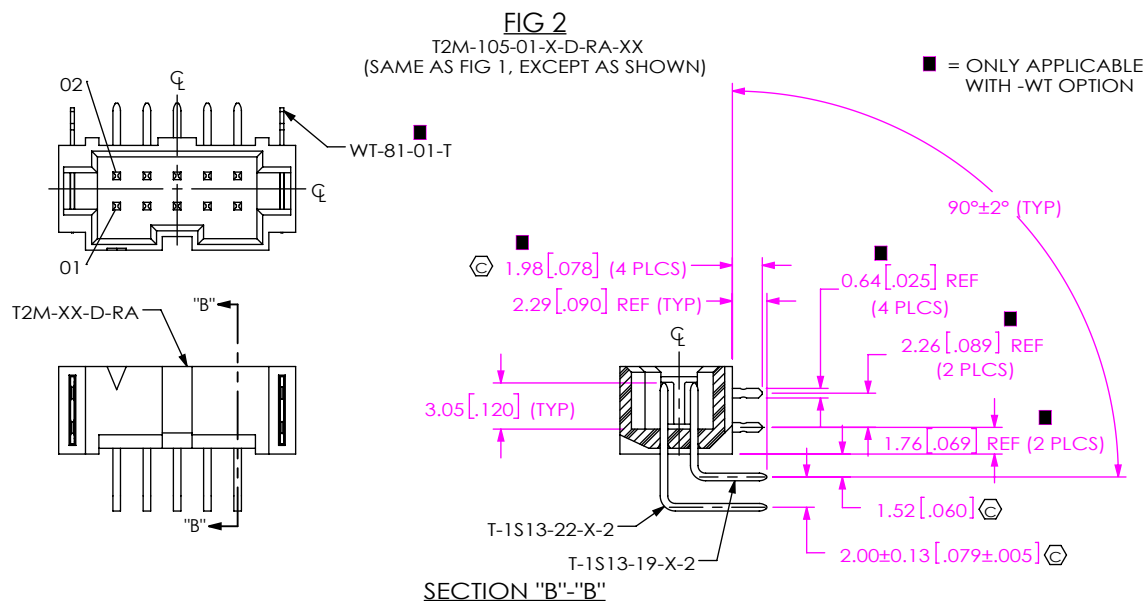
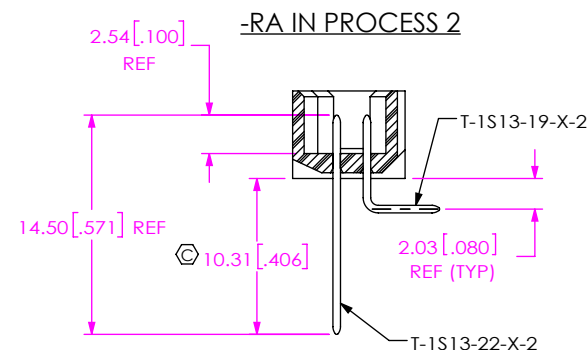
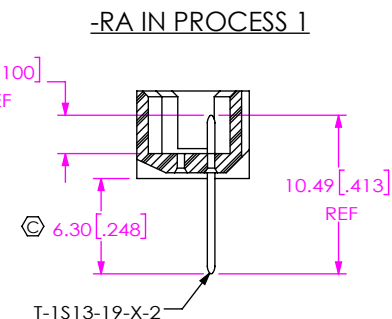


FIG 5
T2M-104-01-X-D-SM-WT
(SAME AS FIG 1, EXCEPT AS SHOWN)
(T2M-102-01-X-D-SM-WT SIMILAR)



PROPRIETARY NOTE
THIS DOCUMENT CONTAINS CONFIDENTIAL AND PROPRIETARY INFORMATION AND ALL DESIGN, MANUFACTURING, REPRODUCTION, USE, PATENT RIGHTS AND SALES RIGHTS ARE EXPRESSLY RESERVED BY SAMTEC, INC. THIS DOCUMENT SHALL NOT BE DISCLOSED, IN WHOLE OR PART, TO ANY UNAUTHORIZED PERSON OR ENTITY NOR REPRODUCED, TRANSFERRED OR INCORPORATED IN ANY OTHER PRODUCT IN ANY MANNER WITHOUT THE EXPRESS WRITTEN CONSENT OF SAMTEC, INC.

DO NOT SCALE DRAWING

SHEET SCALE: 2:1

samtec

520 PARK EAST BLVD, NEW ALBANY, IN 47150
PHONE: 812-944-6733 FAX: 812-948-5047
e-Mail: info@SAMTEC.com code 55322

DESCRIPTION:
2mm SHROUDED TERMINAL STRIP

DWG. NO.
T2M-1XX-XX-X-D-XX-XX

BY: J. BORGELT 3/23/09 SHEET 2 OF 3

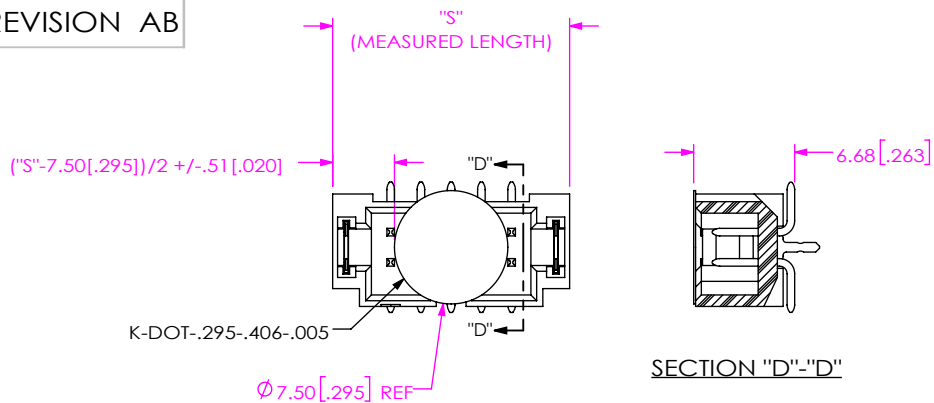
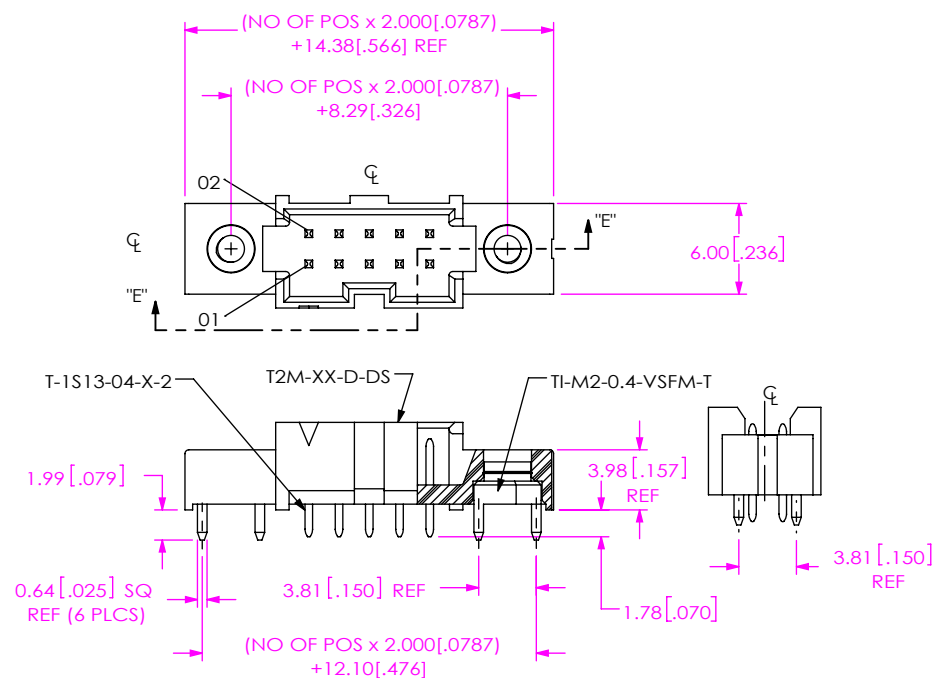


FIG 4
T2M-105-01-X-D-SM-K SHOWN
(FOR SURFACE MOUNT OPTION ONLY)



SECTION "E"-"E"

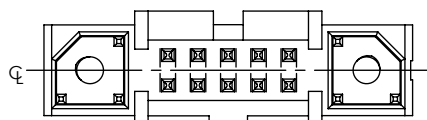
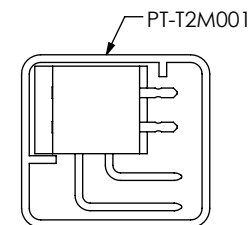
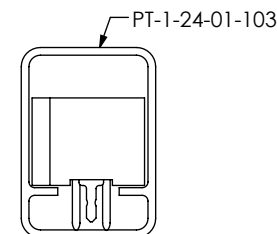


FIG 6
T2M-105-01-X-D-TH-DS SHOWN
(SAME AS FIG 1, EXCEPT AS SHOWN)
(ONLY AVAILABLE WITH -TH & -SM OPTION)

PACKAGING
ALL PARTS ARE LOADED WITH POSITIONS 1
TOWARDS ARROW

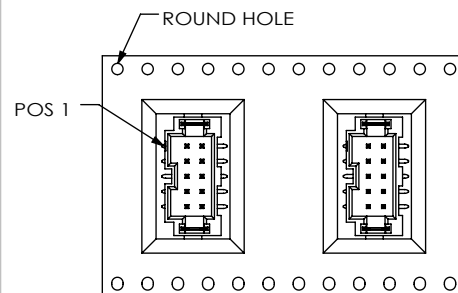


-RA, -RA-WT OPTION

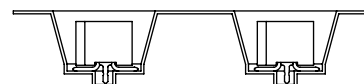


-TH-DS OPTION

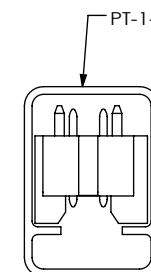
TABLE 1		
OPTIONS	PACKAGING TUBE	PLUG
-TH, -TH-WT	PT-1-24-01-103	TP-09
-SM, -SM-WT	PT-T2M002	TP-09
-RA, -RA-WT	PT-T2M001	TP-07
-TH-DS	PT-1-24-01-103	TP-09
-SM-DS	PT-T2M002	TP-09



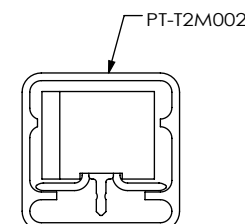
USER DIRECTION OF UNREELING
POCKET NOT DETAILED



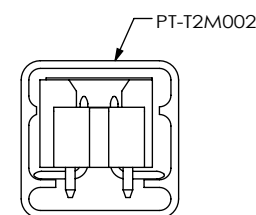
-TR PACKAGING VIEW
ALL PARTS ARE LOADED WITH POSITIONS 1
TOWARDS ROUND HOLE



-TH, -TH-WT OPTION



-SM, -SM-WT OPTION



-SM-DS OPTION

PROPRIETARY NOTE
THIS DOCUMENT CONTAINS CONFIDENTIAL AND
PROPRIETARY INFORMATION AND ALL DESIGN,
MANUFACTURING, REPRODUCTION, USE, PATENT RIGHTS
AND SALES RIGHTS ARE EXPRESSLY RESERVED BY SAMTEC,
INC. THIS DOCUMENT SHALL NOT BE DISCLOSED, IN WHOLE
OR PART, TO ANY UNAUTHORIZED PERSON OR ENTITY NOR
REPRODUCED, TRANSFERRED OR INCORPORATED IN ANY
OTHER PROJECT IN ANY MANNER WITHOUT THE EXPRESS
WRITTEN CONSENT OF SAMTEC, INC.

DO NOT SCALE DRAWING

SHEET SCALE: 2:1

samtec

520 PARK EAST BLVD, NEW ALBANY, IN 47150
PHONE: 812-944-6733 FAX: 812-948-5047
e-Mail: info@SAMTEC.com code 55322

DESCRIPTION:
2mm SHROUDED TERMINAL STRIP
DWG. NO. T2M-1XX-XX-X-D-XX-XX

BY: J. BORGELT 3/23/09 SHEET 3 OF 3