

ELECTRICAL DATA

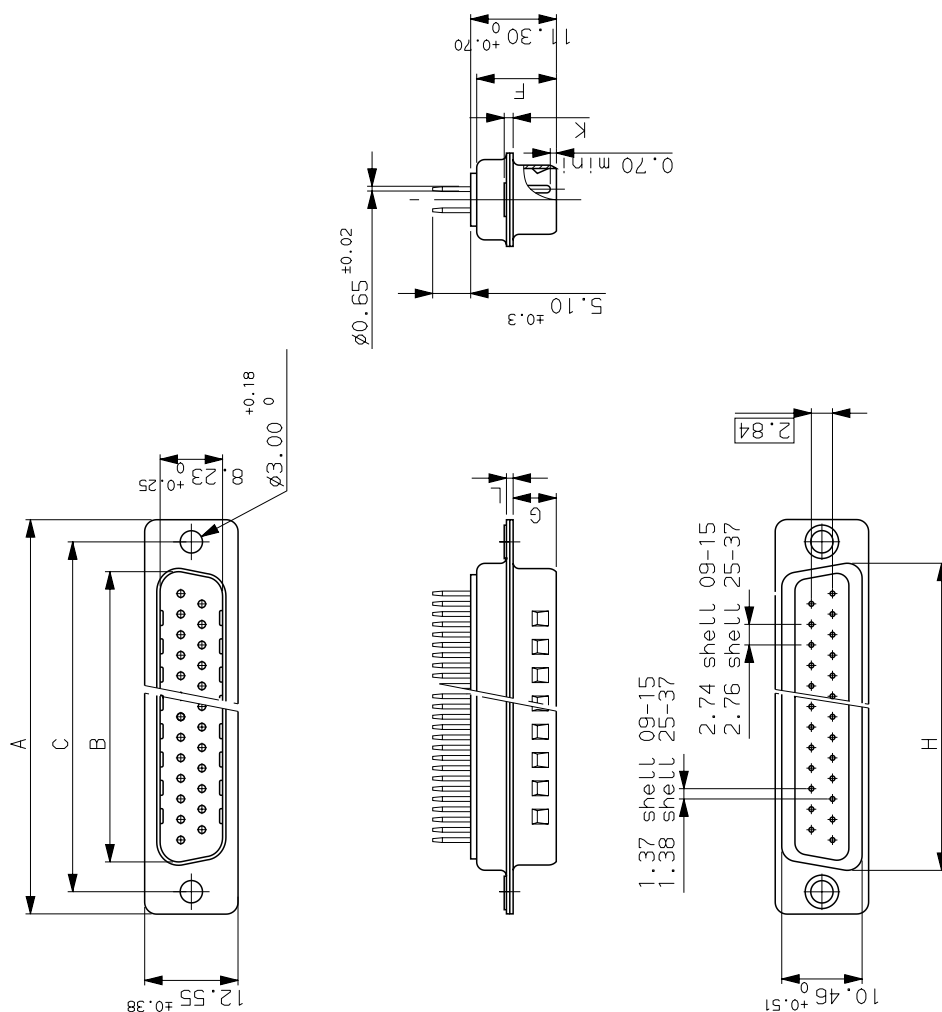
- | | |
|-----------------------|--------|
| Current at AMB. | 5A |
| I max | 7.5A |
| Contact resistance | ≤10mΩ |
| Insulation resistance | ≥500MΩ |
| -TEST VOLTAGE | |
| contact/contact | ≥1000V |
| contact/ground | ≥1200V |

MECHANICAL DATA



- | | |
|---------------------------|---|
| Contact force | ≥ 0.14N |
| Retention force | ≥ 40N |
| Insertion force | according to DIN41652 Part 2 |
| Withdrawal force | according to DIN41652 Part 2 |
| Mechanical endurance | <p>≥ 500 matings / unmatings for 300</p> <p>≥ 200 matings / unmatings for 331</p> |
| Material shell | steel, tin plated |
| Material insulator | glass filled thermoplastic UL94V0 |
| Material contacts | pin:brass; |
| Finish on contact area | 0.4µ gold over nickel for 300 |
| | Flash gold over nickel for 331 |
| | 0.75µ gold over nickel for 343 |
| | 1.25µ gold over nickel for 352 |
| | bright tin-lead over nickel |
| Finish on termination end | according to DIN 41640 Part 70, test |
| Solderability | according to DIN41640 Part 14, test |
| Shock | according to DIN41640 part 15, test |
| Vibration | |

ENVIRONMENTAL DATA

- Climatic category
- Corrosion



Dimensions are in millimeters													
		A ^{+0.76} _{-0.25}	B ^{+0.25} _{-0.12}	F ^{+0.51} _{-0.12}	G	H ^{+0.51} _{-0.12}	L ^{+0.22} _{-0.10}	PART NUMBER	PART NUMBER	PART NUMBER	PART NUMBER		
	O	30.43	16.79	24.99	10.47	5.90 ^{+0.15} _{-0.10}	19.02	1.50	0.80	DEP09P300TX	DEP09P343TX	DEP09P352TX	
	E	30.43	16.79	24.99	10.47	5.90 ^{+0.15} _{-0.10}	27.25	1.50	0.80	DAP15P300TX	DAP15P343TX	DAP15P352TX	
	B	25	32.65	25.12	37.32	10.47	5.90 ^{+0.15} _{-0.10}	1.50	0.80	DBP25P300TX	DBP25P343TX	DBP25P352TX	
	B	25	32.65	38.84	47.04	10.43	5.70 ^{+0.26} _{-0.20}	41.02	1.50	0.90	DCP37P331TX	DCP37P343TX	DCP37P352TX
	C	37	68.94	55.30	63.50	10.56	5.70 ^{+0.26} _{-0.20}	57.45	1.50	0.90			

c	23/08/01	add version 343 and 352.	
ISS	DATE	Latest modification by : JOUBERT	
Designed by: JARRY		date: 2/07/95	Type of drawing: CLIENT
TITLE : PIN CONNECTORS D SUB WITH STRAIGHT DIP SOLDER PINS		SHEET 01	
SCALE: 1:5			
		FRAMATOME CONNECTORS FRANCE Rue Louis Breguet - BP 05 72024 LE MANS Cedex Tel. 33 (16) 43.84.08.43	
This document is the property of FRAMATOME CONNECTORS FRANCE It must not be reproduced or communicated without permission in writing from the owners		PROJECT	
FORMAT	A3	SOURIAU DRG N° C01-8637-0452 M94D001	