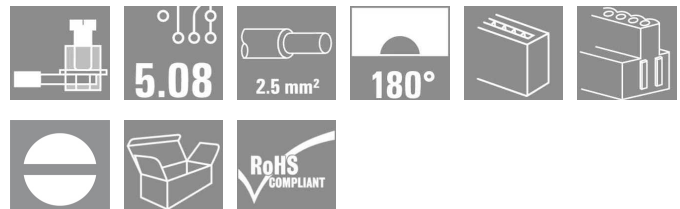


## OMNIMATE Signal - series BLA/SLA 5.08

### BLA 12B SN OR

**Weidmüller Interface GmbH & Co. KG**  
 Klingenbergstraße 16  
 D-32758 Detmold  
 Germany  
 Fon: +49 5231 14-0  
 Fax: +49 5231 14-292083  
 www.weidmueller.com



Female header with clamping yoke connection system. The principle of the vibration-proof screw connection and the Unimate range pin arrangement provides a unique security during operation. Also available with dovetail (B) for convenient attachment of fixing blocks. The BLA has a labelling panel and can be coded. Supplied in cardboard box.

- 0.20 - 2.5mm<sup>2</sup> (IEC) / 26 - 12 AWG (UL)
- 400 V (IEC) / 300 V (UL)
- 17.5 A (IEC) / 10 A (UL)

#### General ordering data

|              |   |
|--------------|---|
| Type         | BLA 12B SN OR   |
| Order No.    | <a href="#">1357060000</a>  |
| Version      | PCB plug-in connector, female plug, 5.08 mm, No. of poles: 12, 180°, Clamping yoke connection, Clamping range, rated connection, max.: 3.32 mm <sup>2</sup> , Box |
| GTIN (EAN)   | 4008190080921   |
| Qty.         | 24 pc(s).   |
| Product data | IEC: 400 V / 17.5 A / 0.2 - 2.5 mm <sup>2</sup><br>UL: 300 V / 10 A / AWG 26 - AWG 12   |
| Packaging    | Box   |

Creation date December 16, 2013 10:41:30 AM CET

## OMNIMATE Signal - series BLA/SLA 5.08

### BLA 12B SN OR

**Weidmüller Interface GmbH & Co. KG**  
 Klingenbergstraße 16  
 D-32758 Detmold  
 Germany  
 Fon: +49 5231 14-0  
 Fax: +49 5231 14-292083  
 www.weidmueller.com

## Technical data

### Dimensions and weights

|            |         |
|------------|---------|
| Net weight | 20.52 g |
|------------|---------|

### System parameters

|  |   |                            |                          |
|--|---|----------------------------|--------------------------|
| Product family                               | OMNIMATE Signal - series BLA/SLA 5.08               | Wire connection method     | Clamping yoke connection |
| Conductor outlet direction                   | 180°  | Pitch in mm (P)            | 5.08 mm                  |
| Pitch in inches (P)                          | 0.2 inch  | No. of poles               | 12                       |
| Screwdriver blade                            | 0.6 x 3.5   | Screwdriver blade standard | DIN 5264                 |
| Tightening torque, min.                      | 0.4 Nm  | Tightening torque, max.    | 0.5 Nm                   |
| Clamping screw                               | M 2.5   | Stripping length           | 7 mm                     |
| L1 in mm                                     | 55.88 mm  | L1 in inches               | 2.2 inch                 |
| Touch-safe protection acc. to DIN VDE 57 106 | Finger-safe unplugged/<br>back-of-hand-safe plugged |                            |                          |

### Material data

|                        |          |                           |        |
|------------------------|----------|---------------------------|--------|
| Insulating material    | PBT GF   | Colour                    | Orange |
| Colour chart (similar) | RAL 2000 | UL 94 flammability rating | V-0    |
| CTI                    | ≥ 200    | Contact material          | CuSn   |
| Contact surface        | tinned   |                           |        |

### Connectable conductors

|   |                      |   |                      |
|---|----------------------|---|----------------------|
| Clamping range, rated connection, min.          | 0.13 mm <sup>2</sup> | Clamping range, rated connection, max.          | 3.32 mm <sup>2</sup> |
| Wire connection cross section AWG, min.         | AWG 28               | Wire connection cross section AWG, max.         | AWG 16               |
| Solid, min. H05(07) V-U                         | 0.2 mm <sup>2</sup>  | Solid, max. H05(07) V-U                         | 2.5 mm <sup>2</sup>  |
| Flexible, min. H05(07) V-K                      | 0.2 mm <sup>2</sup>  | Flexible, max. H05(07) V-K                      | 1.5 mm <sup>2</sup>  |
| w. wire end ferrule, DIN 46228 pt 1, min.       | 0.2 mm <sup>2</sup>  | w. wire end ferrule, DIN 46228 pt 1, max.       | 1.5 mm <sup>2</sup>  |
| w. plastic collar ferrule, DIN 46228 pt 4, min. | 0.2 mm <sup>2</sup>  | w. plastic collar ferrule, DIN 46228 pt 4, max. | 1.5 mm <sup>2</sup>  |
| Plug gauge acc. to EN 60999 a x b; Ø            | 2.4 mm x 1.5 mm      |   |                      |

### DIN IEC rating data

|  |                    |  |        |
|--|--------------------|--|--------|
| Rated current, min. no. of poles (T <sub>u</sub> =20°C)              | 17.5 A             | Rated current, max. no. of poles (T <sub>u</sub> =20°C)                  | 12.5 A |
| Rated current, number of poles (T <sub>u</sub> =40°C), min           | 16 A               | Rated current, number of poles (T <sub>u</sub> =40°C), max.              | 11 A   |
| Rated voltage for surge voltage class pollution degree II/2          | 400 V              | Rated voltage for surge voltage class pollution degree III/2             | 320 V  |
| Rated voltage for surge voltage class pollution degree III/3         | 250 V              | Rated impulse voltage for surge voltage class pollution degree II/2      | 4 kV   |
| Rated impulse voltage for surge voltage class pollution degree III/2 | 4 kV               | Rated impulse voltage for surge voltage class contamination degree III/3 | 4 kV   |
| Short-time withstand current resistance                              | 3 x 1 s with 100 A |  |        |

**OMNIMATE Signal - series BLA/SLA 5.08  
BLA 12B SN OR**

**Weidmüller Interface GmbH & Co. KG**  
 Klingenbergstraße 16  
 D-32758 Detmold  
 Germany  
 Fon: +49 5231 14-0  
 Fax: +49 5231 14-292083  
 www.weidmueller.com

**Technical data****CSA rating data**

Institute (CSA)



Rated voltage (Use group B)

300 V

Rated current (use group B) 10 A

Rated voltage (use group D) 300 V

Rated current (use group D) 10 A

Wire cross-section, AWG, min. AWG 26

Wire cross-section, AWG, max. AWG 12

**UL 1059 rating data**

Institute (UR)



Rated voltage (use group B)

300 V

Rated current (use group B) 10 A

Rated voltage (use group D) 300 V

Rated current (use group D) 10 A

Wire cross-section, AWG, min. AWG 26

Wire cross-section, AWG, max. AWG 12

**Classifications**

|            |             |            |             |
|------------|-------------|------------|-------------|
| ETIM 3.0   | EC001284    | UNSPSC     | 30-21-18-10 |
| eClass 5.1 | 27-26-07-04 | eClass 6.2 | 27-26-07-04 |
| eClass 7.1 | 27-44-04-02 |            |             |

**Notes**

Notes

- Additional colours on request
- Gold-plated contact surfaces on request
- Rated current related to rated cross-section & min. No. of poles.
- Wire end ferrule without plastic collar to DIN 46228/1
- Wire end ferrule with plastic collar to DIN 46228/4
- Rated data refer only to the component itself. Clearance and creepage distances to other components are to be designed in accordance with the relevant application standards.

**Approvals**

Approvals



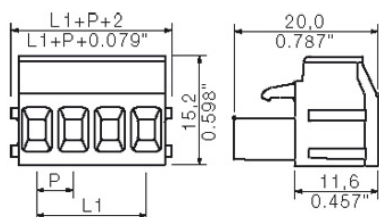
ROHS

Conform

### OMNIMATE Signal - series BLA/SLA 5.08 BLA 12B SN OR

**Weidmüller Interface GmbH & Co. KG**  
Klingenbergstraße 16  
D-32758 Detmold  
Germany  
Fon: +49 5231 14-0  
Fax: +49 5231 14-292083  
[www.weidmueller.com](http://www.weidmueller.com)

## Drawings



## OMNIMATE Signal - series BLA/SLA 5.08

### BLA 12B SN OR

**Weidmüller Interface GmbH & Co. KG**  
 Klingenbergstraße 16  
 D-32758 Detmold  
 Germany  
 Fon: +49 5231 14-0  
 Fax: +49 5231 14-292083  
[www.weidmueller.com](http://www.weidmueller.com)

## Mating connector (conditionally pluggable)

### SLA 90



Dimensionally stable, angled, codable male connector from the Unimate range of plugs with integral aid to prevent wrong connections. Available with open or closed sides. Fixing blocks can be attached to the closed version. The solder pin length of 3.2 mm has been optimised for wave soldering. Supplied in cardboard box.

- 400 V (IEC) / 300 V (UL)
- 17.5 A (IEC) / 10 A (UL)

#### General ordering data

| Type        | Order No.                  | Version  | GTIN (EAN)    | Qty.      | Product data        | Packaging |
|-------------|----------------------------|--|---------------|-----------|---------------------|-----------|
| SLA 12/90   | <a href="#">1239060000</a> | PCB plug-in connector, male  | 4008190044862 | 50 pc(s). | IEC: 400 V / 17.5 A | Box       |
| 3.2SN OR BX |                            | header, open side, Solder connection, 5.08 mm, No. of poles: 12, 90°, Solder pin length (l): 3.2 mm, tinned, Orange, Box |               |           | UL: 300 V / 10 A    |           |

### SLA 180



Dimensionally stable, straight, codable male connector from the Unimate range of plugs with integral aid to prevent wrong connections. Available with open or closed sides. Fixing blocks can be attached to the closed version. The solder pin length of 3.2 mm has been optimised for wave soldering. Supplied in cardboard box.

- 400 V (IEC) / 300 V (UL)
- 17.5 A (IEC) / 10 A (UL)

#### General ordering data

| Type        | Order No.                  | Version   | GTIN (EAN)    | Qty.      | Product data        | Packaging |
|-------------|----------------------------|---|---------------|-----------|---------------------|-----------|
| SLA 12/180  | <a href="#">1240560000</a> | PCB plug-in connector, male header, open side, Solder connection, 5.08 mm, No. of poles: 12, 180°, Solder pin length (l): 3.2 mm, tinned, Orange, Box | 4008190044268 | 50 pc(s). | IEC: 400 V / 17.5 A | Box       |
| 3.2SN OR BX |                            |   |               |           | UL: 300 V / 10 A    |           |

## OMNIMATE Signal - series BLA/SLA 5.08 BLA 12B SN OR

**Weidmüller Interface GmbH & Co. KG**  
Klingenbergstraße 16  
D-32758 Detmold  
Germany  
Fon: +49 5231 14-0  
Fax: +49 5231 14-292083  
www.weidmueller.com

### Mating connector (conditionally pluggable)

#### SLAD 90



Dimensionally stable, angled, codable 2-tier male connector from the Unimate range of plugs with integral aid to prevent wrong connections. Available with open or closed sides. Fixing blocks can be attached to the closed version. The solder pin length of 3.2 mm has been optimised for wave soldering. Supplied in cardboard box.

- 400 V (IEC) / 300 V (UL)
- 10 A (IEC) / 10 A (UL)

#### General ordering data

| Type     | Order No.                  | Version  | GTIN (EAN)    | Qty.      | Product data      | Packaging |
|----------|----------------------------|--|---------------|-----------|-------------------|-----------|
| SLAD     | <a href="#">1373260000</a> | PCB plug-in connector, male  | 4008190102777 | 10 pc(s). | IEC: 400 V / 10 A | Box       |
| 24/06/90 |                            | header, open side, Solder connection, 5.08 mm, No. of poles: 24, 90°, Solder pin length (l): 3.2 mm, tinned, Orange, Box |               |           | UL: 300 V / 10 A  |           |
| 3.2SN OR |                            |  |               |           |                   |           |

#### SLAD 180



Dimensionally stable, straight, codable 2-tier male connector from the Unimate range of plugs with integral aid to prevent wrong connections. Available with open or closed sides. Fixing blocks can be attached to the closed version. The solder pin length of 3.2 mm has been optimised for wave soldering. Supplied in cardboard box.

- 400 V (IEC) / 300 V (UL)
- 10 A (IEC) / 10 A (UL)

#### General ordering data

| Type     | Order No.                  | Version   | GTIN (EAN)    | Qty.      | Product data      | Packaging |
|----------|----------------------------|---|---------------|-----------|-------------------|-----------|
| SLAD     | <a href="#">1375360000</a> | PCB plug-in connector, male header, open side, Solder connection, 5.08 mm, No. of poles: 24, 180°, Solder pin length (l): 3.2 mm, tinned, Orange, Box | 4008190074487 | 10 pc(s). | IEC: 400 V / 10 A | Box       |
| 24/6/180 |                            |   |               |           | UL: 300 V / 10 A  |           |
| 3.2SN OR |                            |   |               |           |                   |           |

## OMNIMATE Signal - series BLA/SLA 5.08 BLA 12B SN OR

**Weidmüller Interface GmbH & Co. KG**  
Klingenbergstraße 16  
D-32758 Detmold  
Germany  
Fon: +49 5231 14-0  
Fax: +49 5231 14-292083  
www.weidmueller.com

### Mating connector (fully pluggable)

#### SLAD 90B



Dimensionally stable, angled, codable 2-tier male connector from the Unimate range of plugs with integral aid to prevent wrong connections. Available with open or closed sides. Fixing blocks can be attached to the closed version. The solder pin length of 3.2 mm has been optimised for wave soldering. Supplied in cardboard box.

- 400 V (IEC) / 300 V (UL)
- 10 A (IEC) / 10 A (UL)

#### General ordering data

| Type      | Order No.                  | Version                      | GTIN (EAN)    | Qty.      | Product data      | Packaging |
|-----------|----------------------------|------------------------------|---------------|-----------|-------------------|-----------|
| SLAD      | <a href="#">1389360000</a> | PCB plug-in connector, male  | 4008190121624 | 10 pc(s). | IEC: 400 V / 10 A | Box       |
| 24/06/90B |                            | header, Dovetails for fixing |               |           | UL: 300 V / 10 A  |           |
| 3.2SN OR  |                            | blocks, Solder connection,   |               |           |                   |           |
|           |                            | 5.08 mm, No. of poles: 24,   |               |           |                   |           |
|           |                            | 90°, Solder pin length (l):  |               |           |                   |           |
|           |                            | 3.2 mm, tinned, Orange,      |               |           |                   |           |
|           |                            | Box                          |               |           |                   |           |

#### SLA 180B



Dimensionally stable, straight, codable male connector from the Unimate range of plugs with integral aid to prevent wrong connections. Available with open or closed sides. Fixing blocks can be attached to the closed version. The solder pin length of 3.2 mm has been optimised for wave soldering. Supplied in cardboard box.

- 400 V (IEC) / 300 V (UL)
- 17.5 A (IEC) / 10 A (UL)

#### General ordering data

| Type        | Order No.                  | Version                      | GTIN (EAN)    | Qty.      | Product data        | Packaging |
|-------------|----------------------------|------------------------------|---------------|-----------|---------------------|-----------|
| SLA 12/180B | <a href="#">1243560000</a> | PCB plug-in connector, male  | 4008190015206 | 50 pc(s). | IEC: 400 V / 17.5 A | Box       |
| 3.2SN OR BX |                            | header, Dovetails for fixing |               |           | UL: 300 V / 10 A    |           |
|             |                            | blocks, Solder connection,   |               |           |                     |           |
|             |                            | 5.08 mm, No. of poles: 12,   |               |           |                     |           |
|             |                            | 180°, Solder pin length (l): |               |           |                     |           |
|             |                            | 3.2 mm, tinned, Orange,      |               |           |                     |           |
|             |                            | Box                          |               |           |                     |           |

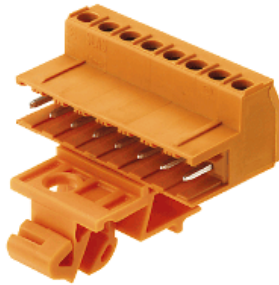
## OMNIMATE Signal - series BLA/SLA 5.08

### BLA 12B SN OR

**Weidmüller Interface GmbH & Co. KG**  
 Klingenbergstraße 16  
 D-32758 Detmold  
 Germany  
 Fon: +49 5231 14-0  
 Fax: +49 5231 14-292083  
 www.weidmueller.com

## Mating connector (fully pluggable)

### SLAS B with RF15



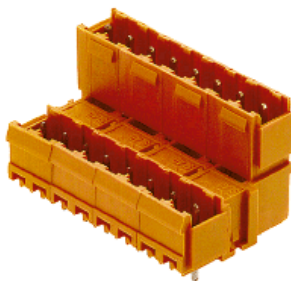
The Unimate range pin arrangement provides a unique security against wrong connections at 5.08 pitch.

- Clamping yoke, TOP and crimp connections
- Good dimensional stability and a high constant operating temperature thanks to glass fibre-reinforced PBT.

### General ordering data

| Type       | Order No.                  | Version  | GTIN (EAN)    | Qty.      | Product data                                  | Packaging |
|------------|----------------------------|--|---------------|-----------|---|-----------|
| SLAS 12B   | <a href="#">1845940000</a> | PCB plug-in connector,   | 4032248361960 | 10 pc(s). | IEC: 400 V / 16 A / 0.2 - 2.5 mm <sup>2</sup> | Box       |
| RF15 SN OR |                            | male plug, 5.08 mm, No. of poles: 12, 180°, Screw connection, Clamping range, rated connection, max.: 3.31 mm <sup>2</sup> , Box |               |           | UL: 300 V / 10 A / AWG 26 - AWG 12            |           |

### SLAD 180B



Dimensionally stable, straight, codable 2-tier male connector from the Unimate range of plugs with integral aid to prevent wrong connections. Available with open or closed sides. Fixing blocks can be attached to the closed version. The solder pin length of 3.2 mm has been optimised for wave soldering. Supplied in cardboard box.

- 400 V (IEC) / 300 V (UL)
- 10 A (IEC) / 10 A (UL)

### General ordering data

| Type      | Order No.                  | Version   | GTIN (EAN)    | Qty.      | Product data      | Packaging |
|-----------|----------------------------|---|---------------|-----------|-------------------|-----------|
| SLAD      | <a href="#">1393560000</a> | PCB plug-in connector, male   | 4008190177577 | 10 pc(s). | IEC: 400 V / 10 A | Box       |
| 24/6/180B |                            | header, Dovetails for fixing blocks, Solder connection, 5.08 mm, No. of poles: 24, 180°, Solder pin length (l): 3.2 mm, tinned, Orange, Box |               |           | UL: 300 V / 10 A  |           |
| 3.2SN OR  |                            |   |               |           |                   |           |



## OMNIMATE Signal - series BLA/SLA 5.08

### BLA 12B SN OR

**Weidmüller Interface GmbH & Co. KG**  
 Klingenbergstraße 16  
 D-32758 Detmold  
 Germany  
 Fon: +49 5231 14-0  
 Fax: +49 5231 14-292083  
 www.weidmueller.com

## Mating connector (fully pluggable)

### SLAS TB



Male header with screw conductor connection for flying leads. Clip-on feet for mounting on the terminal rail and fixing blocks are available for this male connector with clamping yoke connection. The SLAS provides space for labelling and can be coded. Supplied in cardboard box.

- 0.20 - 2.5mm<sup>2</sup> (IEC) / 26 - 12 AWG (UL)
- 400 V (IEC) / 300 V (UL)
- 16 A (IEC) / 10 A (UL)

### General ordering data

| Type           | Order No.                  | Version   | GTIN (EAN)    | Qty.      | Product data  | Packaging |
|----------------|----------------------------|---|---------------|-----------|---|-----------|
| SLAS 12B SN OR | <a href="#">1571860000</a> | PCB plug-in connector, male plug, 5.08 mm, No. of poles: 12, 180°, Clamping yoke connection, Clamping range, rated connection, max.: 3.31 mm <sup>2</sup> , Box | 4008190070496 | 50 pc(s). | IEC: 400 V / 16 A / 0.2 - 2.5 mm <sup>2</sup><br>UL: 300 V / 10 A / AWG 26 - AWG 12 | Box       |

### SLA 90B



Dimensionally stable, angled, codable male connector from the Unimate range of plugs with integral aid to prevent wrong connections. Available with open or closed sides. Fixing blocks can be attached to the closed version. The solder pin length of 3.2 mm has been optimised for wave soldering. Supplied in cardboard box.

- 400 V (IEC) / 300 V (UL)
- 17.5 A (IEC) / 10 A (UL)

### General ordering data

| Type                   | Order No.                  | Version  | GTIN (EAN)    | Qty.      | Product data                            | Packaging |
|------------------------|----------------------------|--|---------------|-----------|---|-----------|
| SLA 12/90B 3.2SN OR BX | <a href="#">1242060000</a> | PCB plug-in connector, male header, Dovetails for fixing blocks, Solder connection, 5.08 mm, No. of poles: 12, 90°, Solder pin length (l): 3.2 mm, tinned, Orange, Box | 4008190141646 | 50 pc(s). | IEC: 400 V / 17.5 A<br>UL: 300 V / 10 A | Box       |