



Copyright FCI.

PRODUCT NUMBER
SEE TABLE

FCI CABLE ASSEMBLY PART NUMBER	REV	(CUST NAME) CABLE ASSEMBLY PART NUMBER	REV	DESCRIPTION	NOTES
10075923-N0300YYLF	A	3125I20203-E@C	C	CABLE, ASSEMBLY, INTERNATIONAL, 32 PAIR FEMALE, TO STUB	SEE SHT 2 FOR FCI SPECIFIC REQUIREMENTS AND STANDARDS SEE SHT 3 FOR CUSTOMER SPECIFIC REQUIREMNETS & B.O.M.
10075923-N1000YYLF	A	3125I20210-E@C	C		SEE SHT 2 FOR FCI SPECIFIC REQUIREMENTS AND STANDARDS SEE SHT 4 FOR CUSTOMER SPECIFIC REQUIREMNETS & B.O.M.
10075923-N1500YYLF	A	3125I20215-E@C	C		SEE SHT 2 FOR FCI SPECIFIC REQUIREMENTS AND STANDARDS SEE SHT 5 FOR CUSTOMER SPECIFIC REQUIREMNETS & B.O.M.
10075923-N3000YYLF	A	3125I20230-E@C	C		SEE SHT 2 FOR FCI SPECIFIC REQUIREMENTS AND STANDARDS SEE SHT 6 FOR CUSTOMER SPECIFIC REQUIREMNETS & B.O.M.

rev	ecn no	dr	date
A	V07-0119	DAI	2007-02-06
-	-	-	-
-	-	-	-
-	-	-	-
-	-	-	-
-	-	-	-
-	-	-	-

www.fciconnect.com			surface <input checked="" type="checkbox"/> tolerance std		projection		MM			
			TOLERANCES UNLESS OTHERWISE SPECIFIED							
Dr	D. INGRAM	2007-02-06	ANGULAR	LINEAR	0.X	±	size	A4	Scale	
Eng	J. DUARTE	2007-02-06			0.XX	±				NTS
Chr	J. DUARTE	2007-02-06			0.XXX	±				
Appr	J. DUARTE	2007-02-06	Product family		C & A		Spec ref			
FCI			title			dwg no			Rev.	
			ADTRAN CABLE ASSEMBLY			10075923			A	
			32 PAIR FEMALE TO STUB							
			catalog no			CUSTOMER			sheet 1 of 6	

PRODUCT NUMBER

SEE TABLE SHEET 1

NOTES:

1. MATES WITH FCI PART NUMBERS:
70451 METRAL VERTICAL HEADER (PRESS FIT) OR
74789 METRAL VERTICAL HEADER (SOLDER TO BOARD)
2. UNLESS OTHERWISE SPECIFIED ASSEMBLED LENGTH TOLERANCE =
= 1 METER: +/- 15.0mm
> 1 METER TO 10 METER: +/- 2% OF TOTAL LENGTH
> 10 METER: +0.00%/-4% OF CABLE LENGTH MEASURED FROM REAR OF CONNECTOR TO REAR OF CONNECTOR.
NOT TIP OF CONNECTOR TO TIP OF CONNECTOR (TOTAL LENGTH).
3. UNLESS OTHERWISE SPECIFIED LABEL POSITION SHALL BE APPROXIMATELY 50.0mm FROM REAR OF CONNECTOR.
4. UNLESS OTHERWISE SPECIFIED STANDARD LABEL SHALL BE LABEL P/N 10076264-001.
FONT SHALL BE CLEARLY VISABLE AND BLACK IN COLOR
LABEL DETAILS:
 - MANUFACTURER CODE OR NAME
 - CUSTOMER P/N OR FCI P/N
 - REVISION
 - DATE CODE WW/YY FORMAT
 - COUNTRY ORIGIN
5. ALL CABLE ASSEMBLIES SHALL BE TESTED 100% FOR CONTINUITY AS DEFINED IN WIRING LIST.
6. UNLESS OTHERWISE SPECIFIED ALL CABLE ASSEMBLIES SHALL BE 100% HI-POT TESTED BY APPLYING 300V DC FOR A MINIMUM OF 10ms, UNLESS ACTIVE COMPONENTS ARE USED IN THIS ASSEMBLY.
7. OTHER TESTING PERFORMED AS REQUIRED BY PRODUCT SPECIFICATION.
8. LEAD FREE PRODUCTS MEET EUROPEAN UNION DIRECTIVES
AND OTHER COUNTRY REGULATIONS AS DESCRIBED IN GS-22-008.



title ADTRAN CABLE ASSEMBLY

32 PAIR FEMALE TO STUB

catalog no

dwg no

10075923

Rev.

A

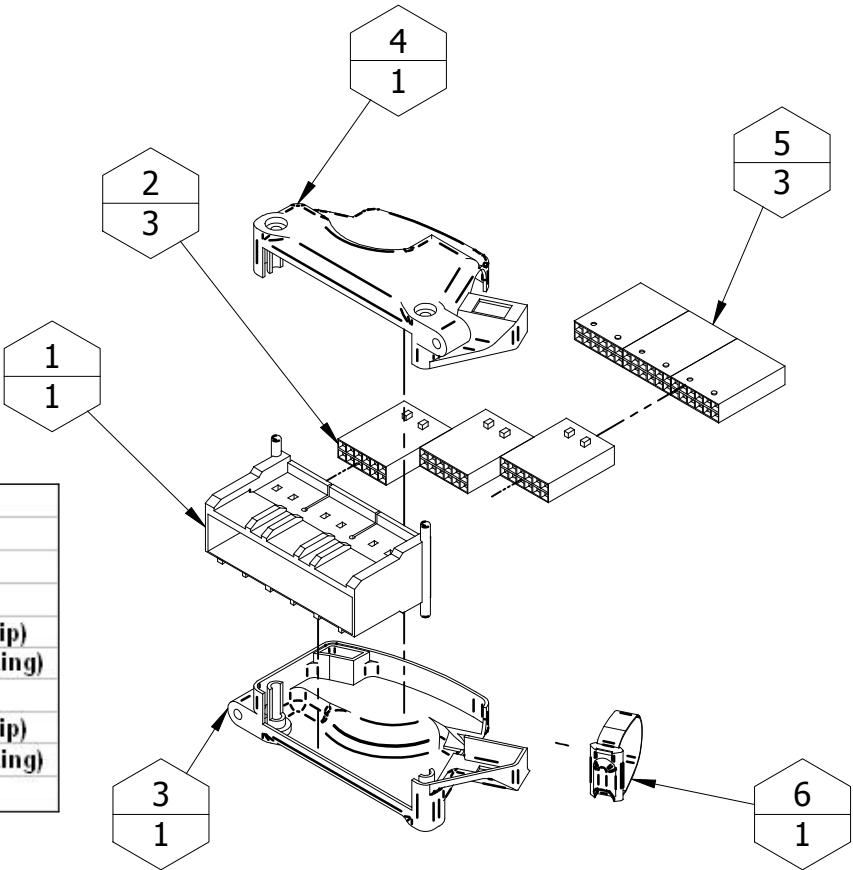
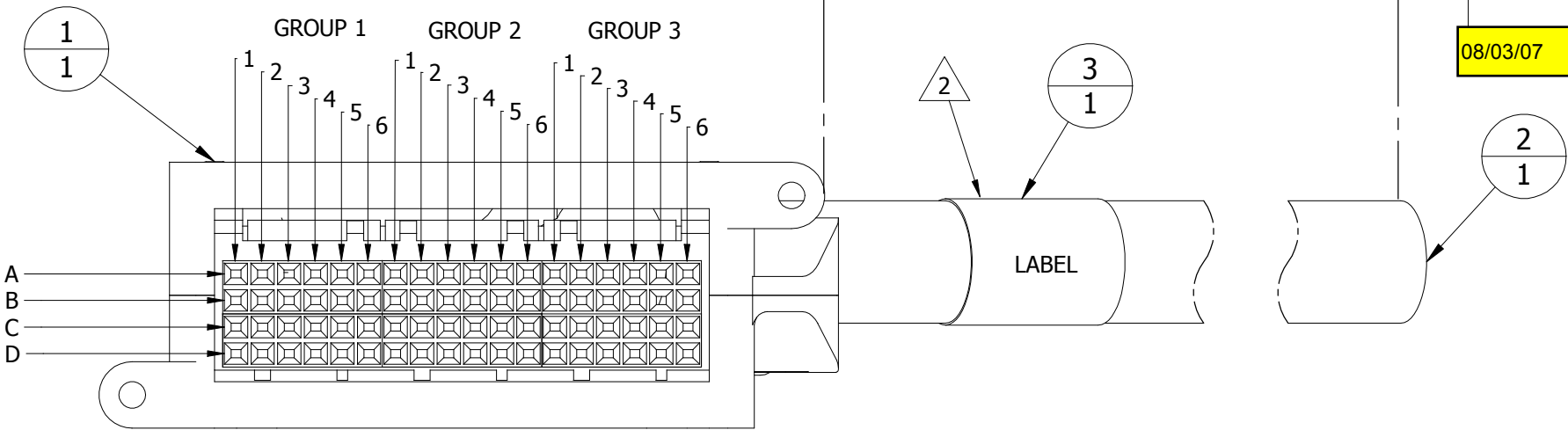
CUSTOMER

sheet 2 of 6

THIS DRAWING CONTAINS CONFIDENTIAL AND PROPRIETARY INFORMATION WHICH IS THE SOLE PROPERTY OF ADTRAN. ANY REPRODUCTION IN WHOLE OR IN PART WITHOUT THE EXPRESS WRITTEN PERMISSION OF ADTRAN IS PROHIBITED.

REVISION HISTORY

DATE	REV	ECO #	COMMENT
7/26/07	@C	N/A	ORIGINAL REVISION
08/03/07	@C	N/A	INITIAL RELEASE



		Group 1						Group 2						Group 3						
		1	2	3	4	5	6	1	2	3	4	5	6	1	2	3	4	5	6	
Circuit Number				17	18	19	20	21	22	23	24	25	26	27	28	29	30	31	32	
A	Binder			Orange	Orange	Orange	Orange	Orange	Orange	Orange	Orange	Orange	Orange	Orange	Orange	Orange	Orange	Orange	Orange	Wire A (Tip)
	Drain			White	White	White	White	Red	Red	Red	Red	Black	Black	Black	Black	Yellow	Yellow	Yellow	Yellow	Wire B (Ring)
B				Blue	Orange	Green	Brown	Blue	Orange	Green	Brown	Blue	Orange	Green	Brown	Blue	Orange	Green	Brown	
	Binder			Blue	Blue	Blue	Blue	Blue	Blue	Blue	Blue	Blue	Blue	Blue	Blue	Blue	Blue	Blue	Blue	Wire A (Tip)
				White	White	White	White	Red	Red	Red	Red	Black	Black	Black	Black	Yellow	Yellow	Yellow	Yellow	Wire B (Ring)
C				Blue	Orange	Green	Brown	Blue	Orange	Green	Brown	Blue	Orange	Green	Brown	Blue	Orange	Green	Brown	
				Blue	Orange	Green	Brown	Blue	Orange	Green	Brown	Blue	Orange	Green	Brown	Blue	Orange	Green	Brown	
Circuit Number				1	2	3	4	5	6	7	8	9	10	11	12	13	14	15	16	

Connector Sub-assembly Parts List

Item Number	Title	Quantity
1	FCI 72 PIN CONN, SHROUD	1
2	FCI CONN, TERMINAL BLOCK, 6X2, POS L	3
3	FCI 72 PIN CONN, LOWER COVER	1
4	FCI 72 PIN CONN, UPPER COVER	1
5	FCI CONN, TERMINAL BLOCK, 6X2, POS R	3
6	METAL TIE WRAP	1

Notes:

- Chicklets may only be inserted 1 way, ensure that proper orientation is noted before inserting wires into chicklets.
- Cable assembly shall be marked with the Adtran part number, manufacturer's name or logo, and date code on "label".
- Components can be substituted with Adtran approved equivalent part.
- Unconnected end of cable shall be cut flush and not stripped.
- Cable assembly should be constructed according to FCI document GS-20-073. Wire preparation, insertion, final connector cover installation, use of metal tie wrap and staking are critical.
- Bag finished assembly in suitable sized poly bag or equivalent. label bag with sticker showing Adtran part number.
- Finished product to be RoHS compliant.

Item Number	Company	Document Number	Title	Quantity
1	FCI	I0056293-00ILF	FCI 72 pin connector, Flammability class UL94V-0, RoHS	1
2	Ericsson	TEN 480 3402/032	Cable, 32 twisted pair, 0.4mm, 2 binder, halogen free per IEC 607454-2, flame retardent per IEC 60332-3 Category C.	1
3	Vendor Supplied	As Required	Label	1

APPROVALS

DATE

DRN

L. SESSIONS

CHK

MECH. ENG.

G. KRUSE

RESP. ENG.

S. GRIERSON

RESP MGR.

P. DAY

TOLERANCE (EXCEPT AS NOTED)

2 PLACES DECIMALS

3 PLACES DECIMALS

HOLE

±.003

ANGLES

± 1/2°

MTL:

FINISH:

SCALE

N/A

SHEET

1:1

SIZE

B

ADTRAN

901 EXPLORER BLVD

HUNTSVILLE, AL 35806

TITLE

Cable, Assembly, International, 32 Pair Female, To Stub

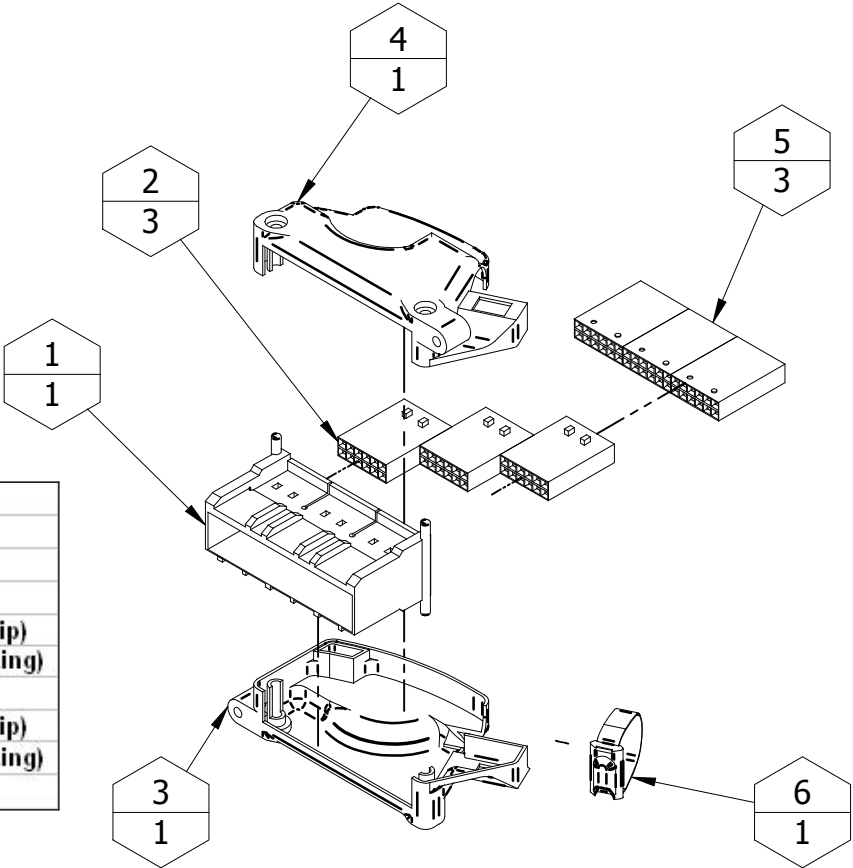
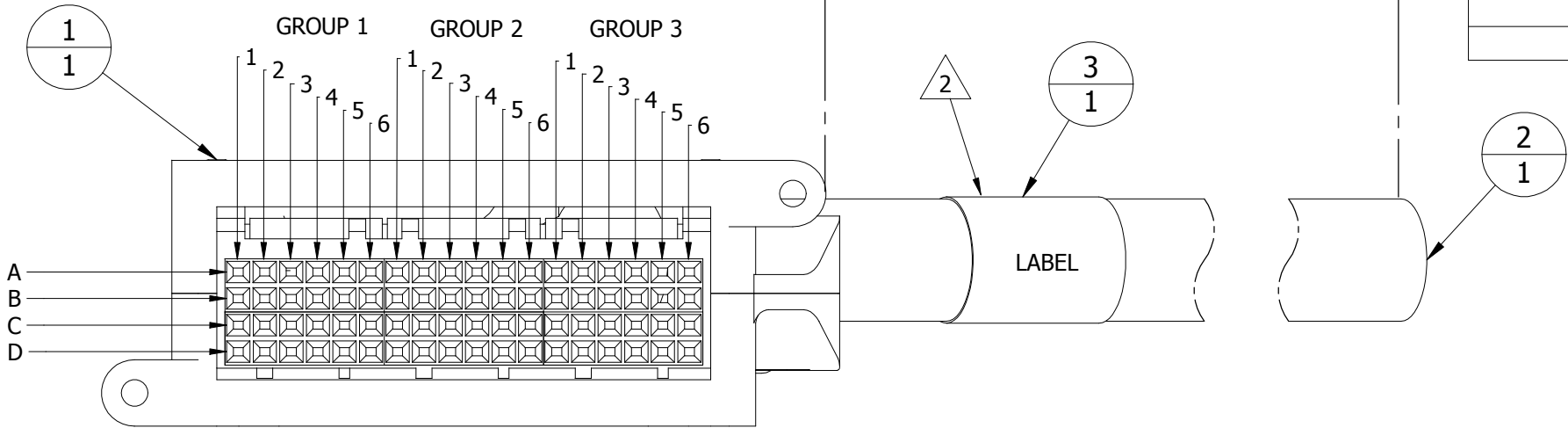
DWG.NO.:

3125I20203-E

THIS DRAWING CONTAINS CONFIDENTIAL AND PROPRIETARY INFORMATION WHICH IS THE SOLE PROPERTY OF ADTRAN. ANY REPRODUCTION IN WHOLE OR IN PART WITHOUT THE EXPRESS WRITTEN PERMISSION OF ADTRAN IS PROHIBITED.

REVISION HISTORY

DATE	REV	ECO #	COMMENT
9/19/06	@C	N/A	ORIGINAL RoHS DRW WAS CREATED FROM 3125I202-10@C



		Group 1						Group 2						Group 3							
		1	2	3	4	5	6	1	2	3	4	5	6	1	2	3	4	5	6		
Circuit Number				17	18	19	20	21	22	23	24	25	26	27	28	29	30	31	32		
A	Binder			Orange	Orange	Orange	Orange	Orange	Orange	Orange	Orange	Orange	Orange	Orange	Orange	Orange	Orange	Orange	Orange		
		Drain		White	White	White	White	Red	Red	Red	Red	Black	Black	Black	Black	Yellow	Yellow	Yellow	Yellow	Wire A (Tip)	
B				Blue	Orange	Green	Brown	Blue	Orange	Green	Brown	Blue	Orange	Green	Brown	Blue	Orange	Green	Brown	Wire B (Ring)	
	Binder			Blue	Blue	Blue	Blue	Blue	Blue	Blue	Blue	Blue	Blue	Blue	Blue	Blue	Blue	Blue	Blue		
C				White	White	White	White	Red	Red	Red	Red	Black	Black	Black	Black	Yellow	Yellow	Yellow	Yellow	Wire A (Tip)	
				Blue	Orange	Green	Brown	Blue	Orange	Green	Brown	Blue	Orange	Green	Brown	Blue	Orange	Green	Brown	Wire B (Ring)	
Circuit Number				1	2	3	4	5	6	7	8	9	10	11	12	13	14	15	16		

Connector Sub-assembly Parts List

Item Number	Title	Quantity
1	FCI 72 PIN CONN, SHROUD	1
2	FCI CONN, TERMINAL BLOCK, 6X2, POS L	3
3	FCI 72 PIN CONN, LOWER COVER	1
4	FCI 72 PIN CONN, UPPER COVER	1
5	FCI CONN, TERMINAL BLOCK, 6X2, POS R	3
6	METAL TIE WRAP	1

Notes:

- Chicklets may only be inserted 1 way, ensure that proper orientation is noted before inserting wires into chicklets.
- Cable assembly shall be marked with the Adtran part number, manufacturer's name or logo, and date code on "label".
- Components can be substituted with Adtran approved equivalent part.
- Unconnected end of cable shall be cut flush and not stripped.
- Cable assembly should be constructed according to FCI document GS-20-073. Wire preparation, insertion, final connector cover installation, use of metal tie wrap and staking are critical.
- Bag finished assembly in suitable sized poly bag or equivalent. label bag with sticker showing Adtran part number.
- Finished product to be RoHS compliant.

Item Number	Company	Document Number	Title	Quantity
1	FCI	I0056293-00ILF	FCI 72 pin connector, Flammability class UL94V-0, RoHS	1
2	Ericsson	TEN 480 3402/032	Cable, 32 twisted pair, 0.4mm, 2 binder, halogen free per IEC 607454-2, flame retardent per IEC 60332-3 Category C.	1
3	Vendor Supplied	As Required	Label	1

APPROVALS

DATE

DRN

L. SESSIONS

CHK

MECH. ENG.

G. KRUSE

RESP. ENG.

S. GRIERSON

RESP MGR.

P. DAY

TOLERANCE (EXCEPT AS NOTED)

2 PLACES DECIMALS

3 PLACES DECIMALS

HOLER

HOLES

±.003

ANGLES

± 1/2°

MTL:

FINISH:

SCALE

N/A

SHEET

1:1

SIZE

B

ADTRAN

901 EXPLORER BLVD

HUNTSVILLE, AL 35806

TITLE

Cable, Assembly,

International, 32 Pair

Female, To Stub

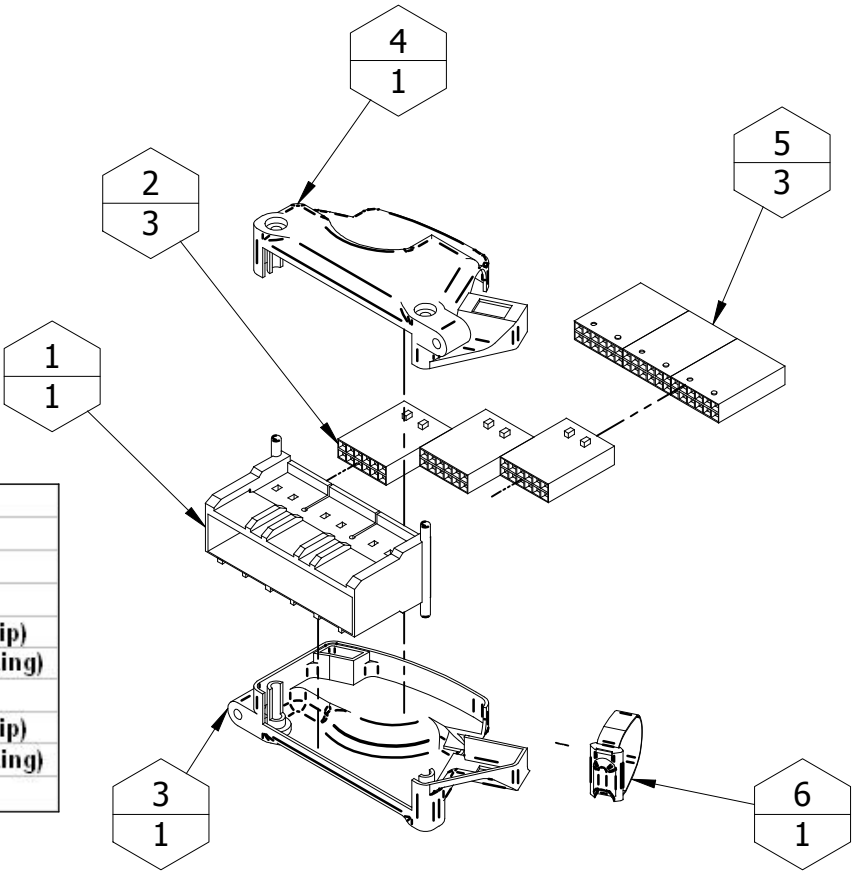
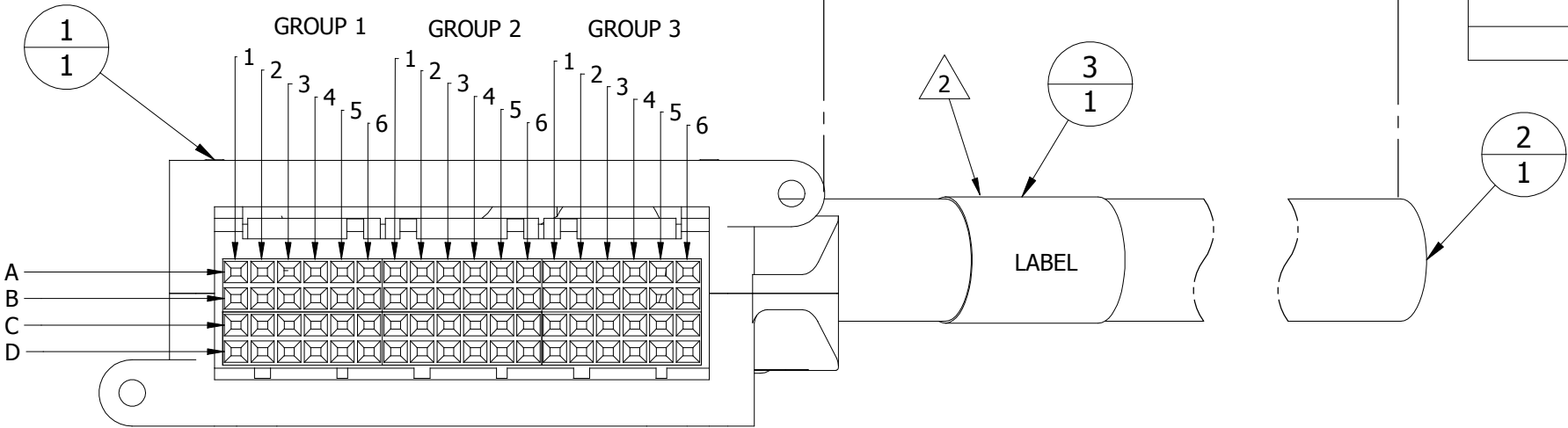
DWG.NO.:

3125I20210-E

THIS DRAWING CONTAINS CONFIDENTIAL AND PROPRIETARY INFORMATION WHICH IS THE SOLE PROPERTY OF ADTRAN. ANY REPRODUCTION IN WHOLE OR IN PART WITHOUT THE EXPRESS WRITTEN PERMISSION OF ADTRAN IS PROHIBITED.

REVISION HISTORY

DATE	REV	ECO #	COMMENT
9/19/06	@C	N/A	ORIGINAL RoHS DRW WAS CREATED FROM 3125I202-15@C



		Group 1						Group 2						Group 3							
		1	2	3	4	5	6	1	2	3	4	5	6	1	2	3	4	5	6		
Circuit Number				17	18	19	20	21	22	23	24	25	26	27	28	29	30	31	32		
A	Binder			Orange	Orange	Orange	Orange	Orange	Orange	Orange	Orange	Orange	Orange	Orange	Orange	Orange	Orange	Orange	Orange	Wire A (Tip)	
		Drain		White	White	White	White	Red	Red	Red	Red	Black	Black	Black	Black	Yellow	Yellow	Yellow	Yellow	Wire B (Ring)	
B				Blue	Orange	Green	Brown	Blue	Orange	Green	Brown	Blue	Orange	Green	Brown	Blue	Orange	Green	Brown		
	Binder			Blue	Blue	Blue	Blue	Blue	Blue	Blue	Blue	Blue	Blue	Blue	Blue	Blue	Blue	Blue	Blue	Wire A (Tip)	
C				White	White	White	White	Red	Red	Red	Red	Black	Black	Black	Black	Yellow	Yellow	Yellow	Yellow	Wire B (Ring)	
				Blue	Orange	Green	Brown	Blue	Orange	Green	Brown	Blue	Orange	Green	Brown	Blue	Orange	Green	Brown		
Circuit Number				1	2	3	4	5	6	7	8	9	10	11	12	13	14	15	16		

Connector Sub-assembly Parts List

Item Number	Title	Quantity
1	FCI 72 PIN CONN, SHROUD	1
2	FCI CONN, TERMINAL BLOCK, 6X2, POS L	3
3	FCI 72 PIN CONN, LOWER COVER	1
4	FCI 72 PIN CONN, UPPER COVER	1
5	FCI CONN, TERMINAL BLOCK, 6X2, POS R	3
6	METAL TIE WRAP	1

Notes:

- Chicklets may only be inserted 1 way, ensure that proper orientation is noted before inserting wires into chicklets.
- Cable assembly shall be marked with the Adtran part number, manufacturer's name or logo, and date code on "label".
- Components can be substituted with Adtran approved equivalent part.
- Unconnected end of cable shall be cut flush and not stripped.
- Cable assembly should be constructed according to FCI document GS-20-073. Wire preparation, insertion, final connector cover installation, use of metal tie wrap and staking are critical.
- Bag finished assembly in suitable sized poly bag or equivalent. label bag with sticker showing Adtran part number.
- Finished product to be RoHS compliant.

Item Number	Company	Document Number	Title	Quantity
1	FCI	I0056293-00ILF	FCI 72 pin connector, Flammability class UL94V-0, RoHS	1
2	Ericsson	TEN 480 3402/032	Cable, 32 twisted pair, 0.4mm, 2 binder, halogen free per IEC 607454-2, flame retardent per IEC 60332-3 Category C.	1
3	Vendor Supplied	As Required	Label	1

APPROVALS

DATE

DRN

L. SESSIONS

CHK

MECH. ENG.

G. KRUSE

RESP. ENG.

S. GRIERSON

RESP MGR.

P. DAY

TOLERANCE (EXCEPT AS NOTED)

2 PLACES DECIMALS

3 PLACES DECIMALS

HOLE

±.003

ANGLES

± 1/2°

MTL:

FINISH:

SCALE

N/A

SHEET

1:1

SIZE

B

ADTRAN

901 EXPLORER BLVD

HUNTSVILLE, AL 35806

TITLE

Cable, Assembly, International, 32 Pair Female, To Stub

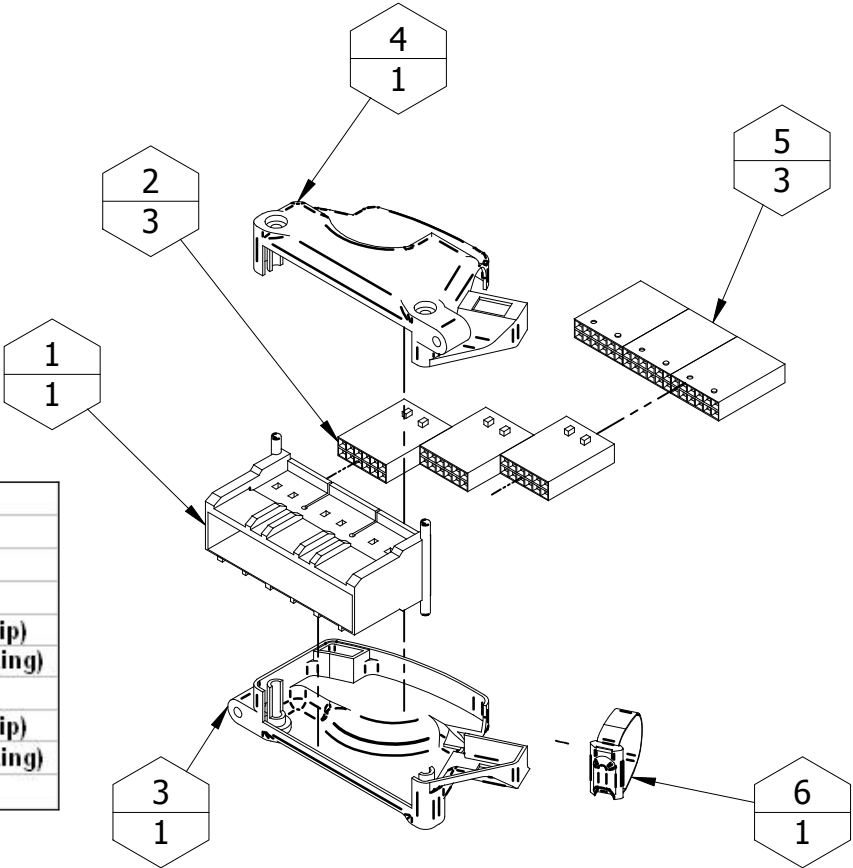
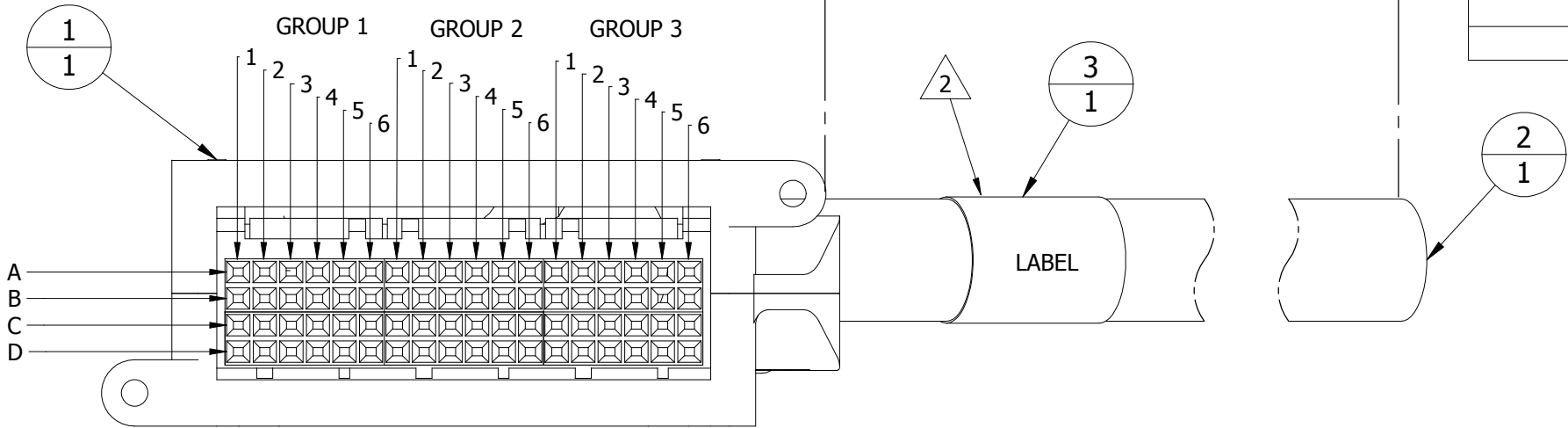
DWG.NO.:

3125I20215-E

THIS DRAWING CONTAINS CONFIDENTIAL AND PROPRIETARY INFORMATION WHICH IS THE SOLE PROPERTY OF ADTRAN. ANY REPRODUCTION IN WHOLE OR IN PART WITHOUT THE EXPRESS WRITTEN PERMISSION OF ADTRAN IS PROHIBITED.

REVISION HISTORY

DATE	REV	ECO #	COMMENT
9/19/06	@C	N/A	ORIGINAL RoHS DRW WAS CREATED FROM 3125I202-30@C



		Group 1						Group 2						Group 3							
		1	2	3	4	5	6	1	2	3	4	5	6	1	2	3	4	5	6		
Circuit Number				17	18	19	20	21	22	23	24	25	26	27	28	29	30	31	32		
A	Binder			Orange	Orange	Orange	Orange	Orange	Orange	Orange	Orange	Orange	Orange	Orange	Orange	Orange	Orange	Orange	Orange		
	Drain			White	White	White	White	Red	Red	Red	Red	Black	Black	Black	Black	Yellow	Yellow	Yellow	Yellow	Wire A (Tip)	
B				Blue	Orange	Green	Brown	Blue	Orange	Green	Brown	Blue	Orange	Green	Brown	Blue	Orange	Green	Brown	Wire B (Ring)	
	Binder			Blue	Blue	Blue	Blue	Blue	Blue	Blue	Blue	Blue	Blue	Blue	Blue	Blue	Blue	Blue	Blue		
C				White	White	White	White	Red	Red	Red	Red	Black	Black	Black	Black	Yellow	Yellow	Yellow	Yellow	Wire A (Tip)	
				Blue	Orange	Green	Brown	Blue	Orange	Green	Brown	Blue	Orange	Green	Brown	Blue	Orange	Green	Brown	Wire B (Ring)	
Circuit Number				1	2	3	4	5	6	7	8	9	10	11	12	13	14	15	16		

Connector Sub-assembly Parts List

Item Number	Title	Quantity
1	FCI 72 PIN CONN, SHROUD	1
2	FCI CONN, TERMINAL BLOCK, 6X2, POS L	3
3	FCI 72 PIN CONN, LOWER COVER	1
4	FCI 72 PIN CONN, UPPER COVER	1
5	FCI CONN, TERMINAL BLOCK, 6X2, POS R	3
6	METAL TIE WRAP	1

Notes:

- Chicklets may only be inserted 1 way, ensure that proper orientation is noted before inserting wires into chicklets.
- Cable assembly shall be marked with the Adtran part number, manufacturer's name or logo, and date code on "label".
- Components can be substituted with Adtran approved equivalent part.
- Unconnected end of cable shall be cut flush and not stripped.
- Cable assembly should be constructed according to FCI document GS-20-073. Wire preparation, insertion, final connector cover installation, use of metal tie wrap and staking are critical.
- Bag finished assembly in suitable sized poly bag or equivalent. label bag with sticker showing Adtran part number.
- Finished product to be RoHS compliant.

Item Number	Company	Document Number	Title	Quantity
1	FCI	I0056293-00ILF	FCI 72 pin connector, Flammability class UL94V-0, RoHS	1
2	Ericsson	TEN 480 3402/032	Cable, 32 twisted pair, 0.4mm, 2 binder, halogen free per IEC 607454-2, flame retardent per IEC 60332-3 Category C.	1
3	Vendor Supplied	As Required	Label	1

APPROVALS

DATE

DRN

L. SESSIONS

CHK

MECH. ENG.

G. KRUSE

RESP. ENG.

S. GRIERSON

RESP MGR.

P. DAY

TOLERANCE (EXCEPT AS NOTED)

2 PLACES DECIMALS

3 PLACES DECIMALS

Holes

±.003

ANGLES

± 1/2°

MTL:

FINISH:

SCALE

N/A

SHEET

1:1

SIZE

B

ADTRAN

901 EXPLORER BLVD

HUNTSVILLE, AL 35806

TITLE

Cable, Assembly, International, 32 Pair Female, To Stub

DWG.NO.:

3125I20230-E