

SPECIFICATIONS

MECHANICAL:
SHOCK: MIL-STD 202 METHOD 213B,
COND. K.
VIBRATION: MIL-STD 202 METHOD 201
LIFE: 300 INSERTION/WITHDRAWAL
CYCLES (MINIMUM)

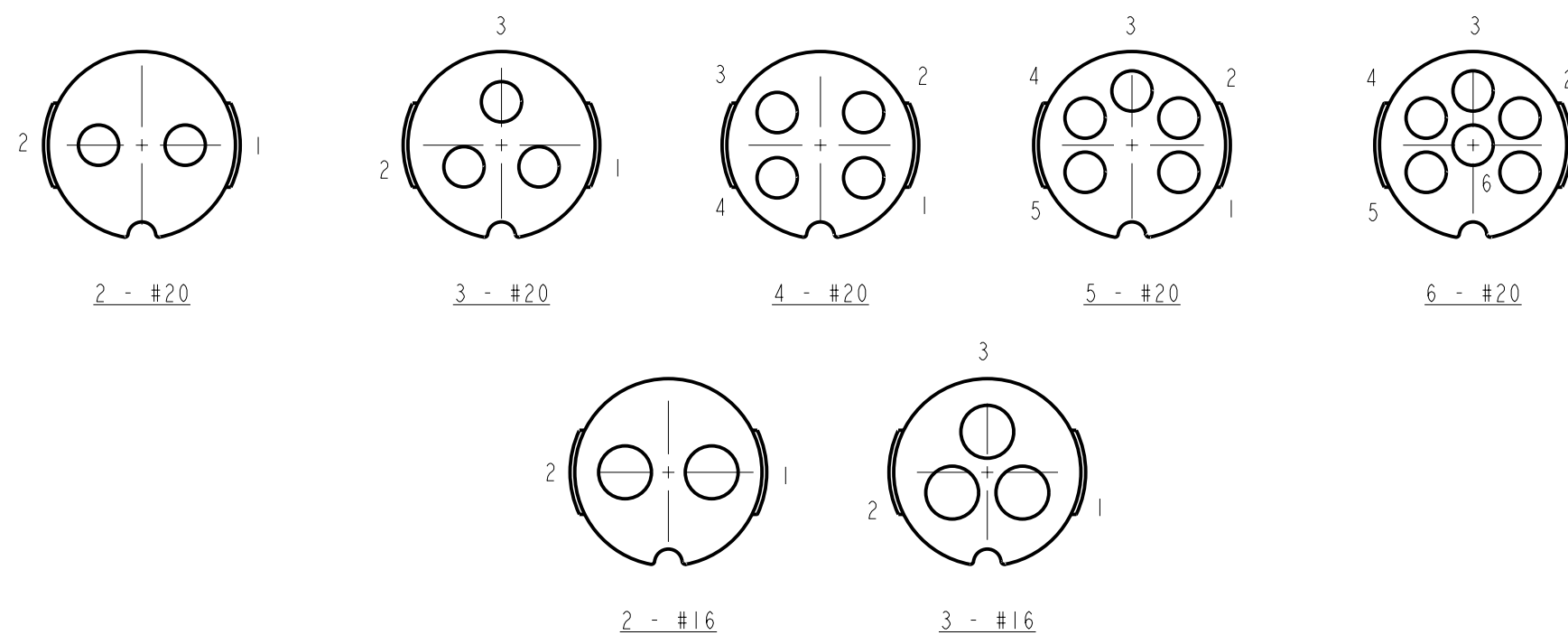
ELECTRICAL
DIELECTRIC WITHSTANDING VOLTAGE: 1,000 VAC
INSULATION RESISTANCE: 100 MEGOHMS (MIN) AT 77°F
CONTACT RESISTANCE: 5.0 MILLOHMS MAX.
CURRENT RATING: 7.5 AMPS (#20 CONTACT)
13.0 AMPS (#16 CONTACT)

ENVIRONMENTAL
TEMPERATURE LIMITS: -40°C TO +65°C (NON-OPERATING)
MOISTURE RESISTANCE: MIL-STD 202 METHOD 106F
INSULATION RESISTANCE: MIL-STD 202 METHOD 302, COND. B
THERMAL SHOCK: MIL-STD 202 METHOD 107G
SALT SPRAY: MIL-STD 202 METHOD 101D, COND. B
WATER TIGHTNESS TEST: U.S. COAST GUARD CFR 46 PART 110.20

MATERIALS:
CORD CONNECTOR SHELL, CONTACT
LOCKING DISK, COUPLING RING AND CABLE CLAMP
ASSEMBLY:
THERMOPLASTIC POLYMER GLASS FIBER, FLAME RETARDANT

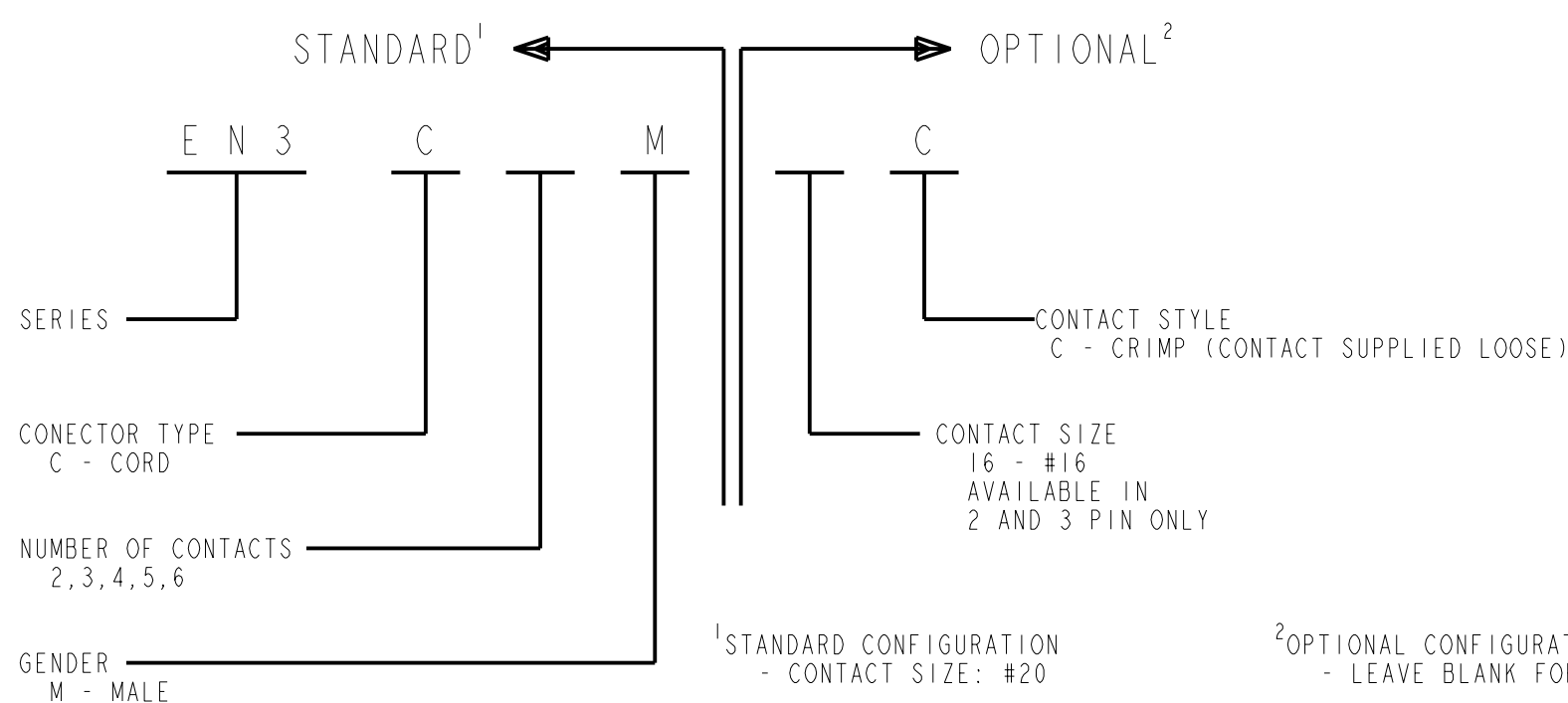
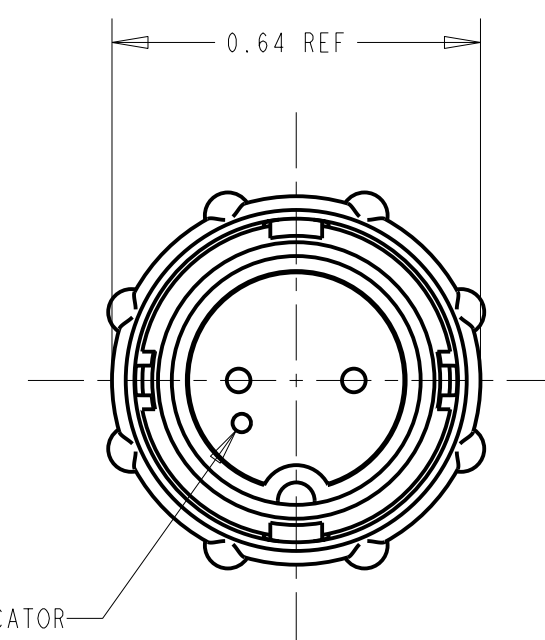
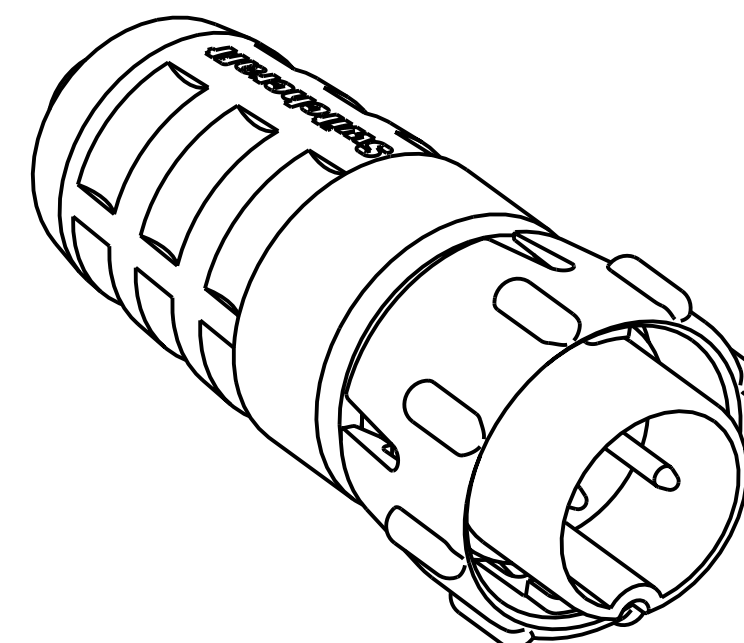
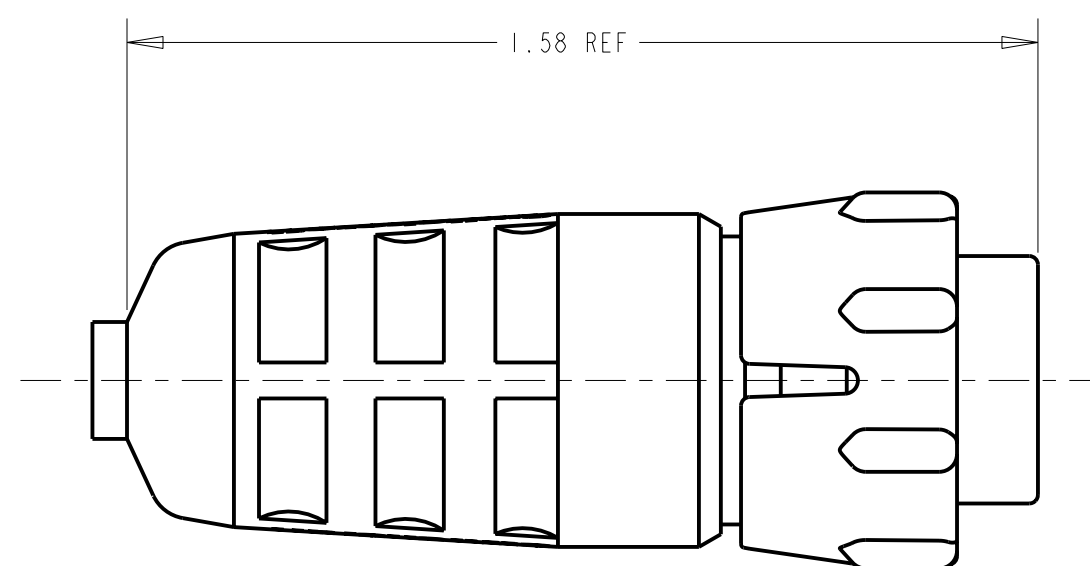
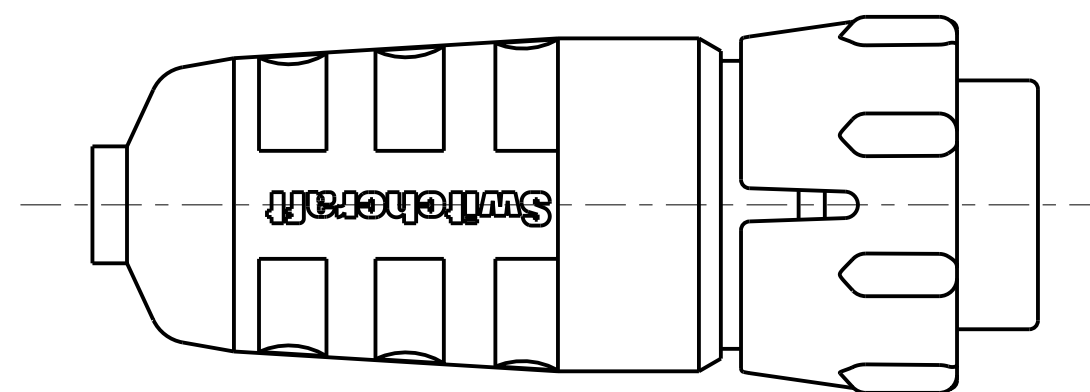
REAR BOOT AND CONNECTOR SHELL INTERIOR:
THERMOPLASTIC RUBBER

CONTACTS: COPPER BASE ALLOY GOLD-PLATED
OVER NICKEL UNDERPLATE



CONTACT ARRANGEMENTS

SHOWN ARE REAR VIEWS OF
MALE CORD CONNECTORS



CUSTOMER DRAWING

						★ STAR SYMBOL DENOTES CRITICAL DIMENSION	THIS DRAWING DESCRIBES A DESIGN CONSIDERED PROPRIETARY IN NATURE, DEVELOPED AND MANUFACTURED BY SWITCHCRAFT INC. AND IS RELEASED ON A CONFIDENTIAL BASIS FOR IDENTIFICATION PURPOSES ONLY.				
						UNLESS OTHERWISE SPECIFIED	SIZE	WIDTH	MULT	LBS/M	TEMPER
D	22232	6-12-98	SG	RB		1. ALL DIMENSIONS IN INCHES - TWO PLACE DECIMALS ±0.01 - THREE PLACE DECIMALS ±0.005 - ANGLES ±1° - ALL DIA. CONCENTRIC WITHIN 0.005 T.I.R.	FINISH SPEC No.			MATERIAL SPEC No.	
C	21282	1-31-97	SG	RB		2. FEATURES ON THE SAME CENTERLINE MUST BE ALIGNED WITHIN ±0.002	FIRST USED ON		SCALE 3:1		Switchcraft®
B	20897	1-31-97	SG	RB		3. REMOVE ALL BURRS	DATE DRAWN	BY	CHKD	APVD	
A	RELEASE TO MFG ECO #20698	4-2-96	CCB	RB			11-28-95	SG	SG 11-28-95	RB 12-1-95	
REV	ECO NUMBER	DATE	BY	APVD		DO NOT SCALE DRAWING	NAME			PART No.	
REVISIONS							MALE CORD CONNECTOR			FN3C M C	
										REV D	

8 7 6 5 4 3 2 1

F

E

D

C

B

A

F

E

D

C

B

A

STEP 1
STRIP CABLE AS SHOWN.
FEED THE END OF THE CABLE THROUGH THE BOOT, CABLE CLAMP HOUSING, AND COUPLING RING IN THE ORDER AND POSITION SHOWN.
CRIMP CONDUCTOR TO CONTACT.
CONTACT #1 TO BE NEXT TO NOTCH.

****REMAINING CONTACTS TO BE PLACED COUNTER CLOCKWISE.**

STEP 2
ALIGN COUPLING RING'S TABS WITH CORD CONNECTOR'S SIDE NOTCHES AND PUSH THE COUPLING RING ONTO CORD CONNECTOR.

STEP 3
PUSH THE CABLE CLAMP HOUSING FORWARD UNTIL IT LOCKS INTO THE CONNECTOR BODY AND SNAP THE TWO CLAMPS INTO IT'S COMPARTMENTS.

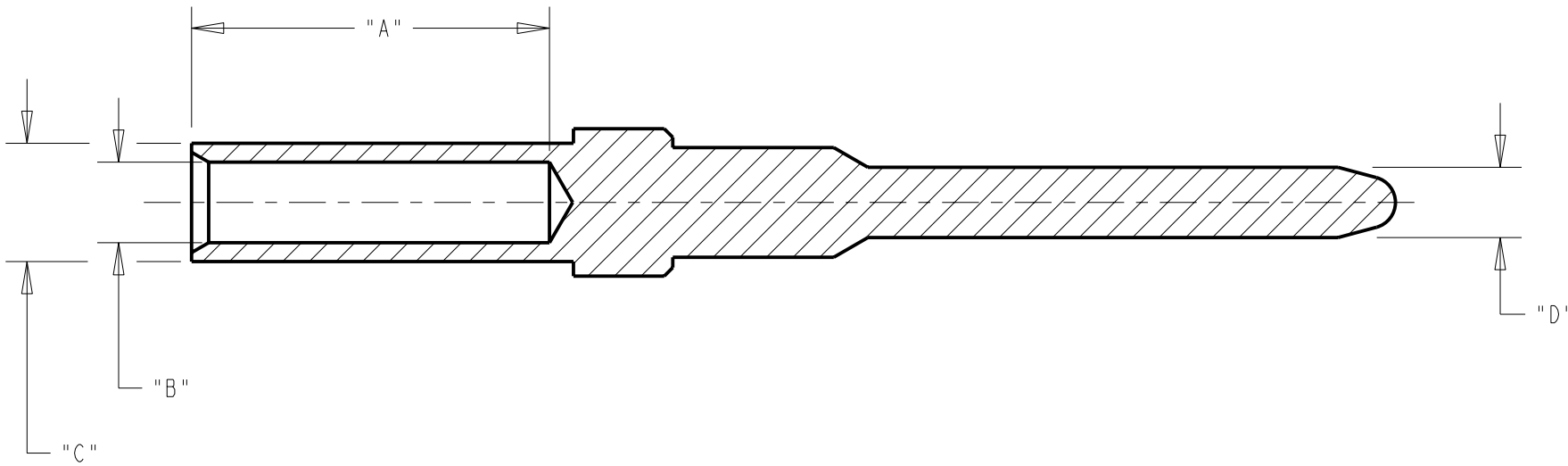
STEP 4
PUSH THE BOOT ALL THE WAY FORWARD TO SEAT TIGHTLY ONTO THE CABLE CLAMP HOUSING.

EN3 CRIMP TOOL

SWITCHCRAFT PART NUMBER	DESCRIPTION	CONTACT SIZE	MANUFACTURER PART NUMBER	MILITARY PART NUMBER
EN3CR	CRIMP HAND TOOL FRAME	#20, #16	DMC MH860	M22520/7-01
EN3CRAUTO	POWER CRIMP TOOL	#20, #16	DMC WA22P	
EN3POS20	POSITIONER	#20	DMC 86-15	M22520/7-02
EN3POS16	POSITIONER	#16	DMC 86-3	M22520/7-04

CONTACT PART NO.	CONTACT SIZE	DIM. "A"	DIM. "B"	DIM. "C"	DIM. "D"	WIRE GAUGE RANGE	INSERTION/ EXTRACTION HAND TOOL
EN3CC20M	#20	0.209	0.047	0.069	0.041	#20-22-24	EN3INS20
EN3CC16M	#16	0.218	0.067	0.095	0.062	#16-18-20	EN3INI6

RECOMMENDED STRIP LENGTH: 0.218
ALL DIMENSIONS ARE REFERENCE UNLESS OTHERWISE SPECIFIED



CONTACT INSERTION INSTRUCTIONS

HOUSING NOT SHOWN

PLACE CRIMP CONTACT AND CONDUCTOR ONTO HAND TOOL.

INSERT TOOL INTO HOUSING UNTIL IT BOTTOMS ONTO DISC.

CONTACT EXTRACTION INSTRUCTIONS

INSERT TOOL INTO HOUSING UNTIL IT BOTTOMS ONTO DISC.

PLACE CONDUCTOR INTO SLOT ON HAND TOOL AS SHOWN.

ROTATE HAND TOOL CLOCKWISE AND REMOVE FROM HOUSING.

Mouser Electronics

Authorized Distributor

Click to View Pricing, Inventory, Delivery & Lifecycle Information:

Switchcraft:

[EN3CLAMP](#) [EN3CR](#) [EN3INS16](#) [EN3CLAMPL](#) [EN3CRAUTOX](#)