



Large Cabinet Racks **Add-A-Rack System**



Design Features

When it is desirable to develop a series of racks into an integral system, Add-A-Rack assemblies can be used to obtain the optimum width and, at the same time, reduce costs considerably.

Assembly consists of welded frame, rear door and one pair of panel mounting rails.

19" Panel Width Non-Ventilated				
Catalog Number	Accessories	Drawings	Used With	Weight lbs
ER-16552			ER-16502	95
ER-16553			ER-16503	106
ER-16554			ER-16504	118
ER-16555			ER-16505	127
ER-16556			ER-16506	136
ER-16561			N/A	83
ER-16562			ER-16512	107
ER-16563			ER-16513	119
ER-16564			ER-16514	132

ER-16565			ER-16515	140
ER-16566			ER-16516	150
ER-16571			N/A	95
ER-16572			ER-16522	117
ER-16573			ER-16523	128
ER-16574			ER-16524	143
ER-16575			ER-16525	151
ER-16576			ER-16526	162

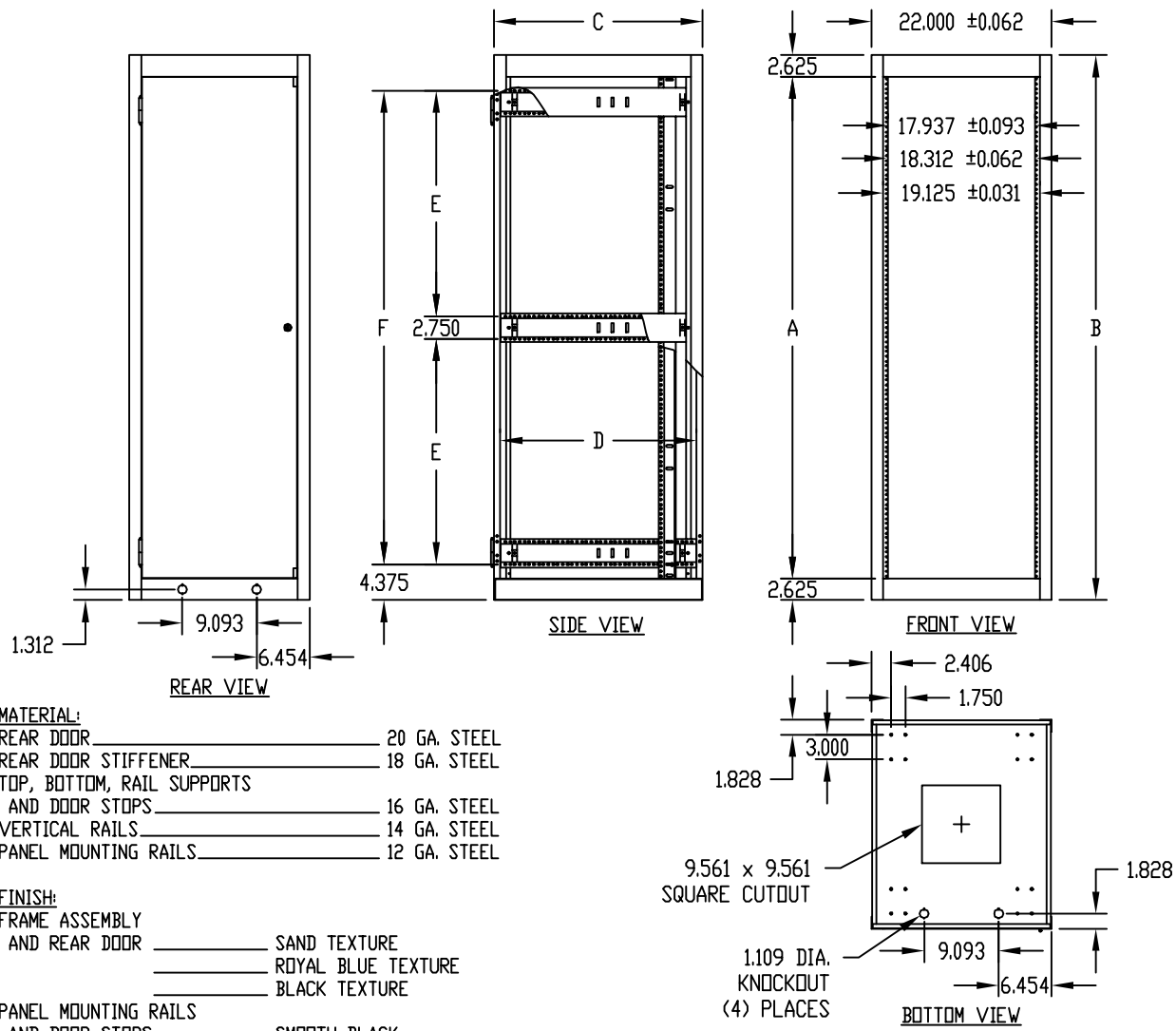
19" Panel Width Ventilated				
Catalog Number	Accessories	Drawings	Used With	Weight lbs
ER-16652			ER-16602	95
ER-16653			ER-16603	106
ER-16654			ER-16604	118
ER-16655			ER-16605	127
ER-16656			ER-16606	136
ER-16662			ER-16612	107
ER-16663			ER-16613	119
ER-16664			ER-16614	132
ER-16665			ER-16615	140
ER-16666			ER-16616	150
ER-16672			ER-16622	117
ER-16673			ER-16623	128
ER-16674			ER-16624	143
ER-16675			ER-16625	151
ER-16676			ER-16626	162

PART NAME ECONOMIZER UPRIGHT ADD-A-RACK (19" P.S.)

PART No.

ER-16552 thru ER-16576

- NOTES:**
- ① PANEL MOUNTING RAILS TAPPED #10-32 ON E.I.A. UNIVERSAL SPACING AND ARE FULLY ADJUSTABLE.
 - ② MOUNTING HOLES PIERCED IN BASE FOR #RC-7758 CASTERS.
 - ③ LOAD RATING: 1200 LBS. MAX.



MATERIAL:

- REAR DOOR _____ 20 GA. STEEL
- REAR DOOR STIFFENER _____ 18 GA. STEEL
- TOP, BOTTOM, RAIL SUPPORTS AND DOOR STOPS _____ 16 GA. STEEL
- VERTICAL RAILS _____ 14 GA. STEEL
- PANEL MOUNTING RAILS _____ 12 GA. STEEL

FINISH:

- FRAME ASSEMBLY AND REAR DOOR _____ SAND TEXTURE
- _____ ROYAL BLUE TEXTURE
- _____ BLACK TEXTURE
- PANEL MOUNTING RAILS AND DOOR STOPS _____ SMOOTH BLACK

OPTIONAL ACCESSORIES

PART NO.	PANEL SPACE A	B	C	D	E	F	PANEL MTG. RAILS PART NO.	PLEXIGLAS DOORS PART NO.
ER-16552	42.000	47.312	18.500	17.000	—	38.562	PMR-9450	V-9063-A
ER-16553	52.500	57.812			—	49.062	PMR-9451	V-9064-A
ER-16554	61.250	66.562			27.531	57.812	PMR-9452	V-9065-A
ER-16555	70.000	75.312			31.906	66.562	PMR-9453	V-9066-A
ER-16556	78.750	84.062	18.500	17.000	36.281	75.312	PMR-9454	V-9067-A
ER-16561	21.000	26.312	25.500	24.000	—	17.562	PMR-9448	V-9060-A
ER-16562	42.000	47.312			—	38.562	PMR-9450	V-9063-A
ER-16563	52.500	57.812			—	49.062	PMR-9451	V-9064-A
ER-16564	61.250	66.562			27.531	57.812	PMR-9452	V-9065-A
ER-16565	70.000	75.312			31.906	66.562	PMR-9453	V-9066-A
ER-16566	78.750	84.062	25.500	24.000	36.281	75.312	PMR-9454	V-9067-A
ER-16571	21.000	26.312	30.750	29.250	—	17.562	PMR-9448	V-9060-A
ER-16572	42.000	47.312			—	38.562	PMR-9450	V-9063-A
ER-16573	52.500	57.812			—	49.062	PMR-9451	V-9064-A
ER-16574	61.250	66.562			27.531	57.812	PMR-9452	V-9065-A
ER-16575	70.000	75.312			31.906	66.562	PMR-9453	V-9066-A
ER-16576	78.750	84.062	30.750	29.250	36.281	75.312	PMR-9454	V-9067-A