

DO NOT
SCALE FROM
THIS PRINT

NOTES:

- 1. Ⓢ REPRESENTS A CRITICAL DIMENSION.
- 2. MINIMUM PUSHOUT FORCE: 1 LB[4.45N].
- 3. MAXIMUM ALLOWABLE BOW: .002[.05] INCH/INCH AFTER ASSEMBLY.
- 4. POST HEIGHT VARIATION BETWEEN ANY TWO PINS: .005[.13].
- 5. FOR ALL PINS: NO BAND MARKS ALLOWED IN POST AREA.
- 6. FOR LOCKING CLIPS: .75LB[3.336N] MIN RETENTION.
- 7. MEASURE AT BEND.
- 8. MAX PIN ROTATION IN BODY TO BE 2°.

SHF-1XX-01-X-D-XX-XX

No OF POSITIONS
-02 THRU -25

LEAD STYLE
-01:

PLATING SPECIFICATION

- L: 10μ" LIGHT SELECTIVE IN CONTACT AREA, MATTE TIN ON TAIL
- F: 3μ" FLASH SELECTIVE GOLD IN CONTACT AREA, MATTE TIN ON TAIL
- S: 30μ" SELECTIVE GOLD IN CONTACT AREA, MATTE TIN ON TAIL

OPTION

- LC: LOCKING CLIP (NOT AVAILABLE WITH -RA)
- K: POLYIMIDE FILM (-SM ONLY) (AVAILABLE IN TAPE & REEL ONLY) (USE K-DOT-.256-.375-.005)
- TR: TAPE & REEL

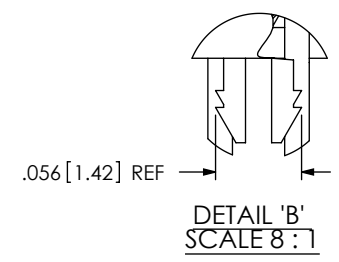
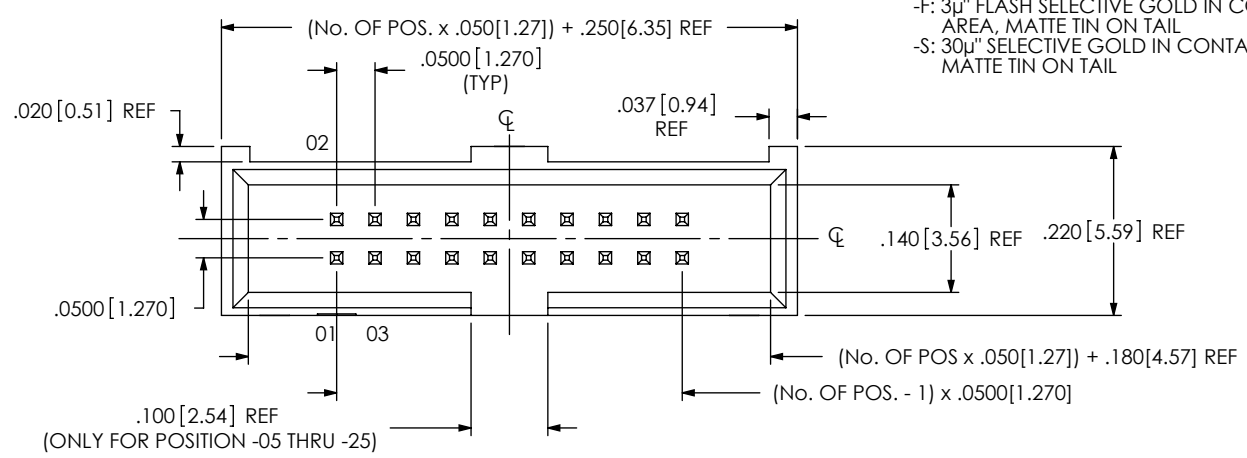
BODY HEIGHT

- TH: THROUGH HOLE (SEE FIG 1, SHT. 1)
- RA: RIGHT ANGLE (SEE FIG 2, SHT. 2)
- SM: SURFACE MOUNT (SEE FIG 3, SHT. 3)

ROW SPECIFICATION

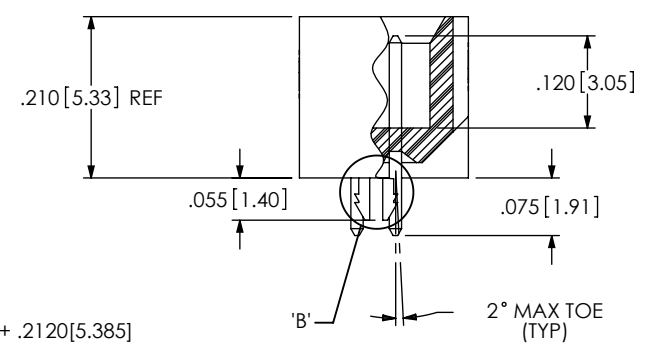
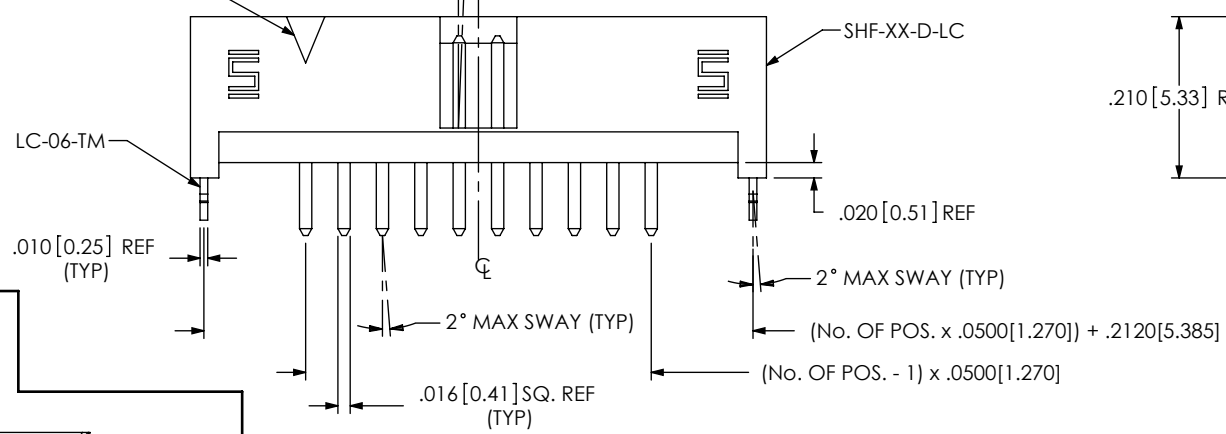
- D: DOUBLE

FIG 1
(SHF-110-01-X-D-TH-LC SHOWN)

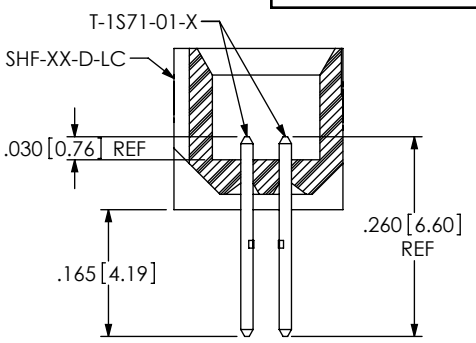


FIRST POSITION
INDICATOR

2° MAX SWAY
(TYP)



IN-PROCESS 1
(FOR -TH ONLY)




F:\DWG\MISC\MKTG\SHF-1XX-01-X-D-XX-XX-MKT.SLDDRW

| CPC FREQUENCY THIS SHEET | |
|--------------------------------|------------------------------------|
| A | C1, C2, C3, C30 |
| B | C6, C7, C8, C9, C10, C11, C29, C31 |
| C | |
| D | |

UNLESS OTHERWISE SPECIFIED,
DIMENSIONS ARE IN INCHES.
TOLERANCES ARE:
DECIMALS ANGLES
.XX: ±.01 [0.3]
.XXX: ±.005 [0.13]
.XXXX: ±.0020 [0.051]

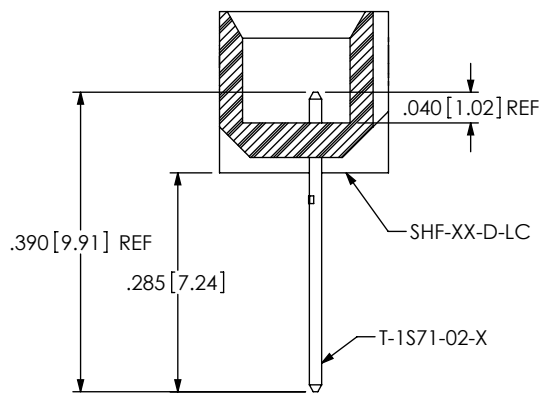
PROPRIETARY NOTE
THIS DOCUMENT CONTAINS INFORMATION
CONFIDENTIAL AND PROPRIETARY TO
SAMTEC, INC. AND SHALL NOT BE REPRODUCED
OR TRANSFERRED TO OTHER DOCUMENTS OR
DISCLOSED TO OTHERS OR USED FOR ANY
PURPOSE OTHER THAN THAT WHICH IT WAS
OBTAINED WITHOUT THE EXPRESSED WRITTEN
CONSENT OF SAMTEC, INC.

MATERIAL: DO NOT SCALE DRAWING SHEET SCALE: 4:1
INSULATOR: SUMIKA E6810LHF, UL 94 VO, COLOR: BLACK
TERMINAL: PHOS BRONZE

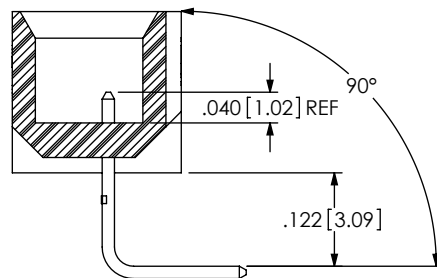


520 PARK EAST BLVD, NEW ALBANY, IN 47150
PHONE: 812-944-6733 FAX: 812-948-5047
e-Mail: info@SAMTEC.com code 55322

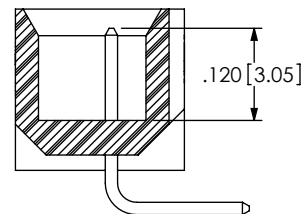
| | |
|---|--------------|
| DESCRIPTION: .050 x .050 SHROUDED TERMINAL STRIP | |
| DWG. NO. SHF-1XX-01-X-D-XX-XX | |
| BY: T NEWTON 1/10/2008 | SHEET 1 OF 4 |



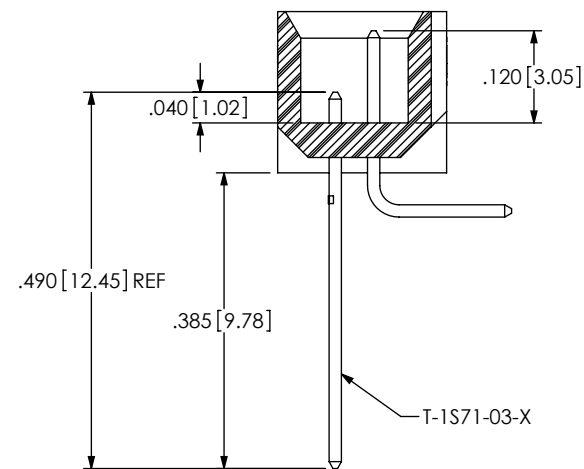
IN-PROCESS 1
(FOR -RA ONLY)



IN-PROCESS 2
(FOR -RA ONLY)



IN-PROCESS 3
(FOR -RA ONLY)



IN-PROCESS 4
(FOR -RA ONLY)

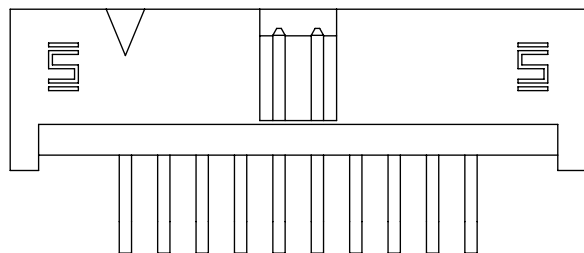
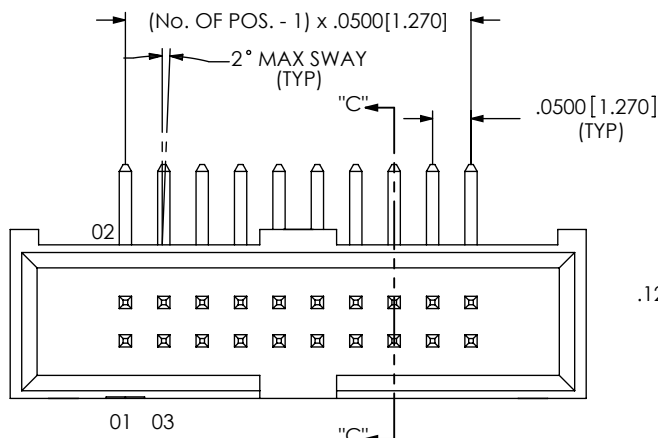
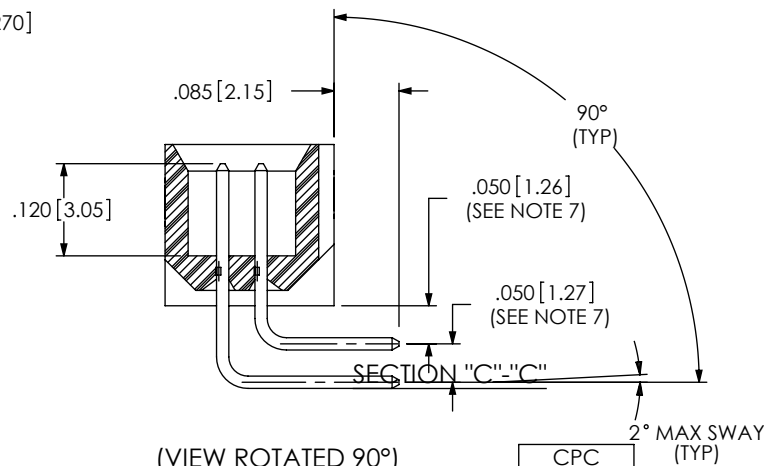
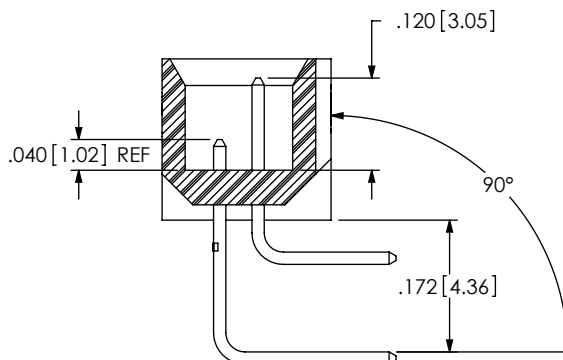


FIG 2
(SHF-110-01-X-D-RA SHOWN)
(SAME AS FIG 1, DIFFERENT AS SHOWN)



(VIEW ROTATED 90°)



IN-PROCESS 5
(FOR -RA ONLY)

F:\DWG\MISC\MKTG\SHF-1XX-01-X-D-XX-XX-MKT.SLDDRW

| CPC FREQUENCY THIS SHEET | |
|--------------------------------|---|
| A | C14 |
| B | C12, C13, C15, C16, C17, C18, C19, C32, C33, C34, C35, C36, C37 |
| C | |
| D | |

PROPRIETARY NOTE

THIS DOCUMENT CONTAINS INFORMATION
CONFIDENTIAL AND PROPRIETARY TO
SAMTEC, INC. AND SHALL NOT BE REPRODUCED
OR TRANSFERRED TO OTHER DOCUMENTS OR
DISCLOSED TO OTHERS OR USED FOR ANY
PURPOSE OTHER THAN THAT WHICH IT WAS
OBTAINED WITHOUT THE EXPRESSED WRITTEN
CONSENT OF SAMTEC, INC.

DO NOT SCALE DRAWING

SHEET SCALE: 4:1

samtec

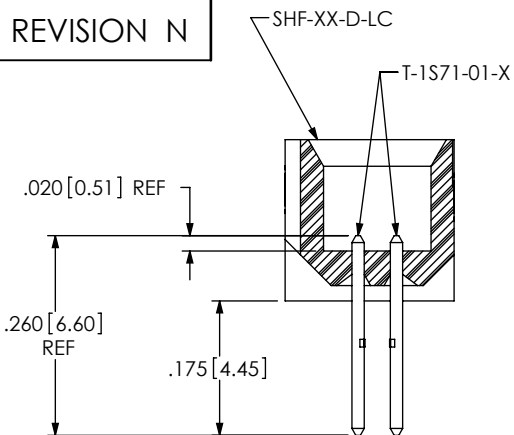
520 PARK EAST BLVD, NEW ALBANY, IN 47150
PHONE: 812-944-6733 FAX: 812-948-5047
e-Mail: info@SAMTEC.com code 55322

DESCRIPTION:
.050 x .050 SHROUDED TERMINAL STRIP

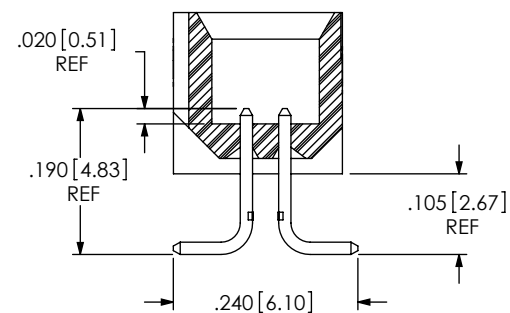
DWG. NO.
SHF-1XX-01-X-D-XX-XX

BY: T NEWTON 1/10/2008 SHEET 2 OF 4

REVISION N

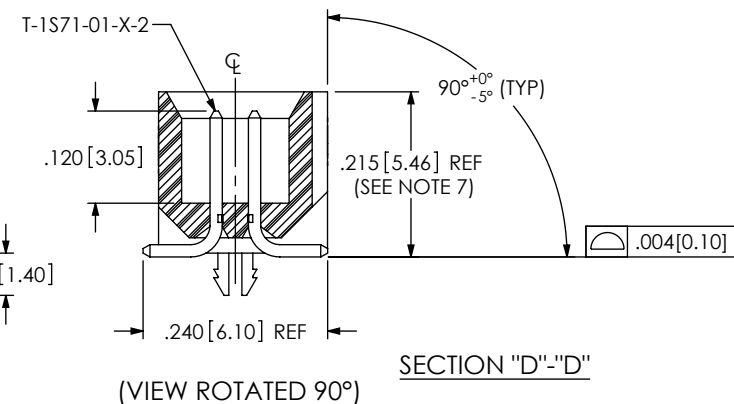
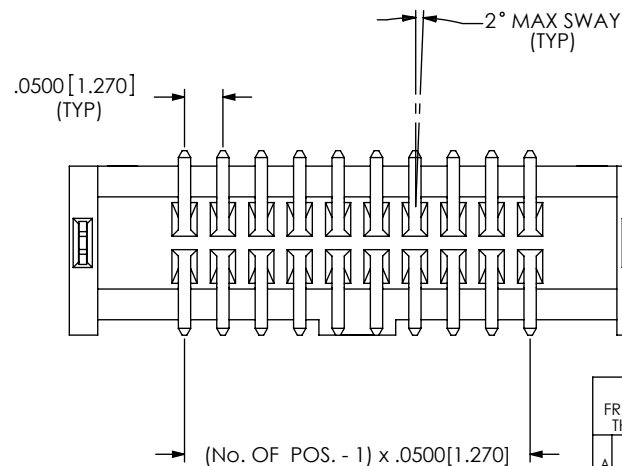
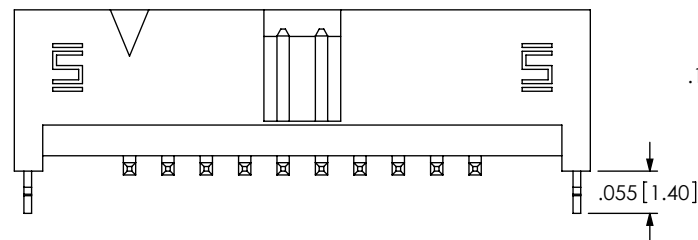
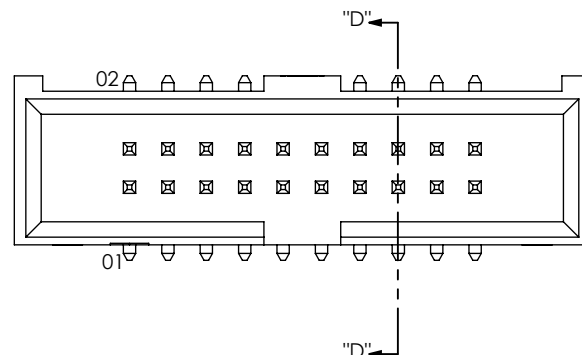


IN-PROCESS 1
(FOR -SM ONLY)



IN-PROCESS 2
(FOR -SM ONLY)

FIG 3
(SHF-110-01-X-D-SM-LC SHOWN)
(SAME AS FIG 1, DIFFERENT AS SHOWN)



| CPC FREQUENCY THIS SHEET | |
|--------------------------------|-----------------------|
| A | C21 |
| B | C22, C23, C24, C26 |
| C | |
| D | |

PROPRIETARY NOTE
THIS DOCUMENT CONTAINS INFORMATION
CONFIDENTIAL AND PROPRIETARY TO
SAMTEC, INC. AND SHALL NOT BE REPRODUCED
OR TRANSFERRED TO OTHER DOCUMENTS OR
DISCLOSED TO OTHERS OR USED FOR ANY
PURPOSE OTHER THAN THAT WHICH IT WAS
OBTAINED WITHOUT THE EXPRESSED WRITTEN
CONSENT OF SAMTEC, INC.

DO NOT SCALE DRAWING

SHEET SCALE: 4:1

F:\DWG\MISC\MKTG\SHF-1XX-01-X-D-XX-XX-MKT.SLDDRW

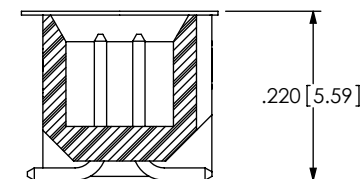
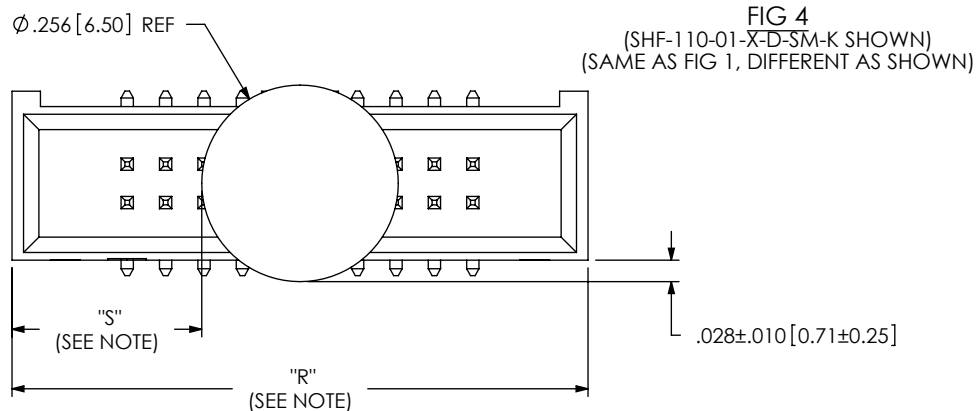
samtec

520 PARK EAST BLVD, NEW ALBANY, IN 47150
PHONE: 812-944-6733 FAX: 812-948-5047
e-Mail: info@SAMTEC.com code 55322

DESCRIPTION:
.050 x .050 SHROUDED TERMINAL STRIP

DWG. NO.
SHF-1XX-01-X-D-XX-XX

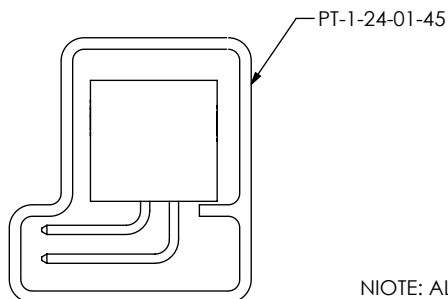
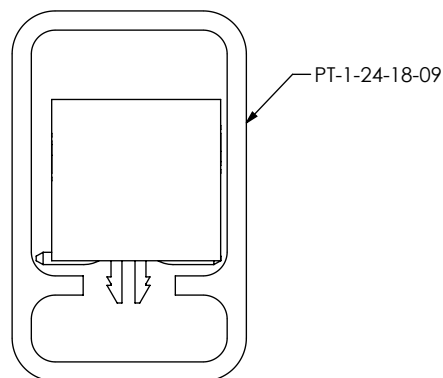
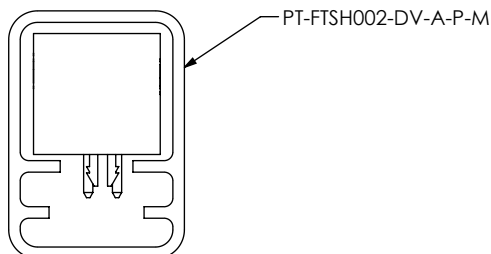
BY: T NEWTON 1/10/2008 SHEET 3 OF 4



(VIEW ROTATED 90°)

NOTE: "R" = USED MEASURED DIMENSION (REF)
"S" = $\{("R" - 0.256[6.50])/2\} \pm 0.020[0.51]$

PACKAGING
ALL PARTS ARE LOADED WITH POSITION 1
TOWARD THE ARROW



NOTE: ALL POSITIONS ARE TO BE TUBED

| TABLE 1 | | |
|-------------|---------------------|-------|
| OPTIONS | PACKAGING TUBE | PLUG |
| -TH, -TH-LC | PT-FTSH002-DV-A-P-M | TP-03 |
| -SM-LC | PT-1-24-18-09 | TP-03 |
| -RA | PT-1-24-01-45 | TP-07 |
| -SM | PT-1-24-18-09 | TP-03 |

F:\DWG\MISC\MKTG\SHF-1XX-01-X-D-XX-XX-MKT.SLDDRW

CRITICAL DIMENSION INSPECTION INSTRUCTION TABLE

| ASSEMBLY OPERATION | IN-PROCESS INSPECTION |
|---------------------------|---------------------------------------|
| (-TH) FILL T-1S71-01-X | C1, C2, C3, C6, C7, C8, C10, C30, C31 |
| (-TH) REPRESS T-1S71-01-X | C11 |
| (-RA) FILL T-1S71-02-X | C1, C2, C3, C7, C8, C12, C13 |
| (-RA) RA T-1S71-02-X | C32, C33, |
| (-RA) REPRESS T-1S71-02-X | C34 |
| (-RA) FILL T-1S71-03-X | C6, C7, C8, C10, C14, C15 |
| (-RA) RA T-1S71-03-X | C35, C36 |
| (-RA) REPRESS T-1S71-03-X | C16, C17, C18, C19, C20, C37 |
| (-SM) FILL T-1S71-01-X | C1, C2, C3, C6, C7, C21, C22 |
| (-SM) REPRESS T-1S71-01-X | C23, C24, C26, C38 |
| INSTALL KAPTON | C27, C28 |
| INSTALL LC-06-TM | C9, C29 |

CPC'S INTENTIONALLY DELETED: C4, C5

| CPC FREQUENCY THIS SHEET | |
|--------------------------------|-----|
| A | C27 |
| B | C28 |
| C | |
| D | |

PROPRIETARY NOTE
THIS DOCUMENT CONTAINS INFORMATION
CONFIDENTIAL AND PROPRIETARY TO
SAMTEC, INC. AND SHALL NOT BE REPRODUCED
OR TRANSFERRED TO OTHER DOCUMENTS OR
DISCLOSED TO OTHERS OR USED FOR ANY
PURPOSE OTHER THAN THAT WHICH IT WAS
OBTAINED WITHOUT THE EXPRESSED WRITTEN
CONSENT OF SAMTEC, INC.

DO NOT SCALE DRAWING

SHEET SCALE: 4:1

samtec

520 PARK EAST BLVD, NEW ALBANY, IN 47150
PHONE: 812-944-6733 FAX: 812-948-5047
e-Mail info@SAMTEC.com code 55322

DESCRIPTION:
.050 x .050 SHROUDED TERMINAL STRIP

DWG. NO. **SHF-1XX-01-X-D-XX-XX**

BY: T NEWTON 1/10/2008 SHEET 4 OF 4