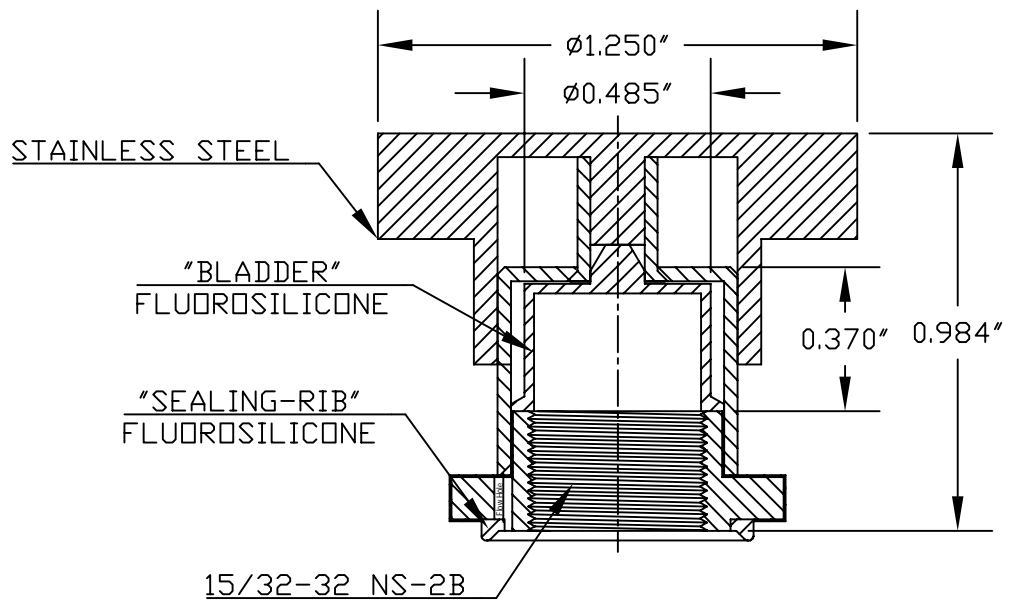
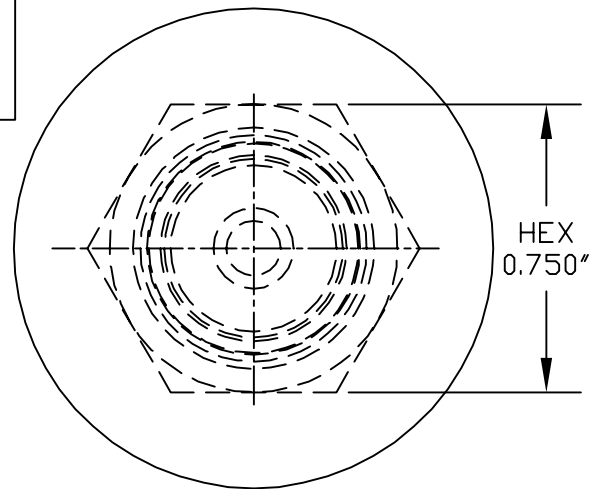


### SPECIFICATIONS

**Material:** Casing - Stainless Steel  
 Seal - Fluorosilicone Rubber Gr60  
**Mounting Nut:** Stainless Steel  
**Temperature Range:** HEXSEALS: -94°F to +400°F  
**Pressure Range:** Exceeds 15 psi internal and 1500 psi external.  
**Operational Life:** 50,000 actuations (minimum).  
**Shelf Life:** Excess of 25 years.  
**Resistant to:** Salt spray, sunlight, ozone, weather, fungus, and most acids and lubricating oils  
**Agency Recognition:** E-SEELS and HEXSEALS are UL-listed to UL Std. 50 types 1-13, and meet CSA standards.  
**Installation:** If a reducing adaptor is required - see page 14 of HEXSEAL catalog HEX200 for part numbers and drawing.



B	REDRAWN and WAS 0.422" TO 0.485", WAS 0.438" TO 0.370"				09.11.09	
A	CAD COMPUTER GENERATED				10.23.02	
REV.	DESCRIPTION				DATE	
MAXIMUM AND MINIMUM MEASUREMENTS ARE STATED DIRECTLY ON EACH DIMENSION.	TITLE:	ARMORED SEAL FOR PUSHBUTTON SWITCHES (1238/5 SS)		ENG.		
				DWN.	K.S.	10.14.81
				CHKD.	J. CELLA	09.11.09
MAT'L: STAINLESS STEEL & FLUOROSILICONE RUBBER GR60				SCALE	(1238/5 SS) HEXSEAL®	
FINISH:	APM-HEXSEAL CORPORATION		2 : 1	DWG. NO.		

THIS DRAWING COVERS PROPRIETARY ITEM AND IS THE PROPERTY OF THE APM-HEXSEAL CORPORATION.  
 THIS DRAWING IS NOT TO BE COPIED OR USED WITHOUT THE WRITTEN APPROVAL OF AN OFFICER OF THE APM-HEXSEAL CORPORATION.

# Mouser Electronics

Authorized Distributor

Click to View Pricing, Inventory, Delivery & Lifecycle Information:

[APM HEXSEAL:](#)

[1238/5](#)