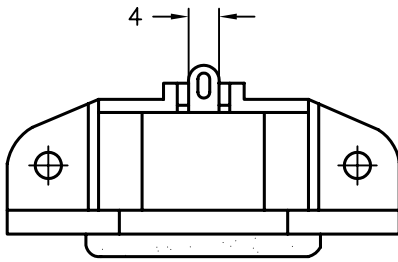


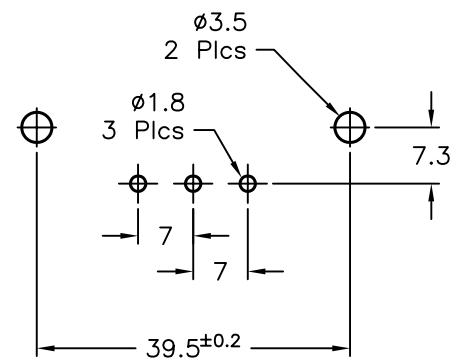
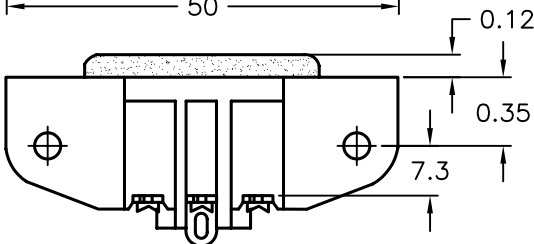
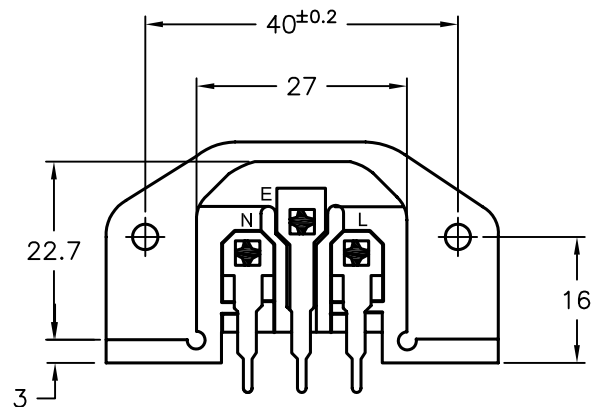
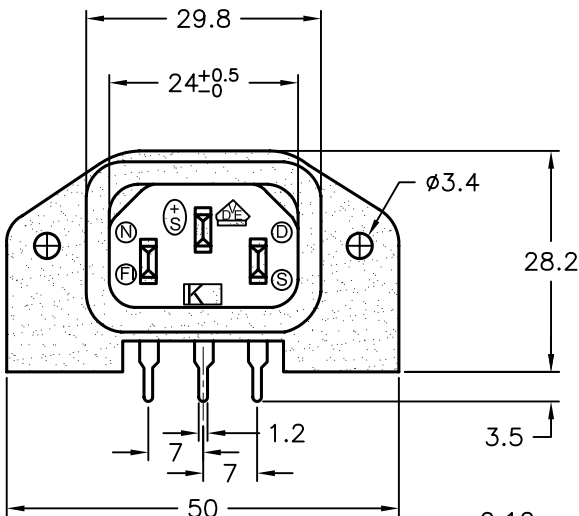
DCP #	REV	DESCRIPTION	DRAWN	DATE	CHECKD	DATE	APPRVD	DATE
162	A	RELEASED	JWM	1/22/98	JC	2/4/98	BB	2/5/98
1780	B	Rohs Added	DCM	10/16/05	JWM	10/17/05	JWM	10/17/05


RoHS  
Compliant


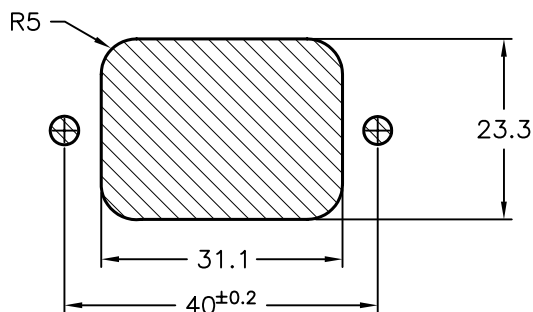
Ratings:

15A, 250VAC - UL &amp; CSA

10A, 250VAC - VDE



PCB Layout



Panel Cutout

SPC-F004.DWG

TOLERANCES:

UNLESS OTHERWISE  
SPECIFIED,  
DIMENSIONS ARE  
FOR REFERENCE  
PURPOSES ONLY.

DRAWN BY:

Jeff McVicker

DATE:

1/22/98

CHECKED BY:

John Cole

DATE:

2/4/98

APPROVED BY:

Brett Braatz

DATE:

2/5/98

DRAWING TITLE:

Angled Inlet PCB Mount IEC 320-C14

SIZE

A

DWG. NO.

2145

ELECTRONIC FILE

92N4148.dwg

REV

B

SCALE: NTS

U.O.M.: Millimeters

SHEET: 1 OF 1