

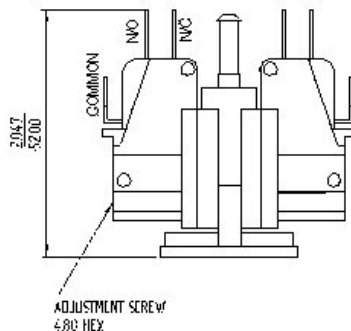
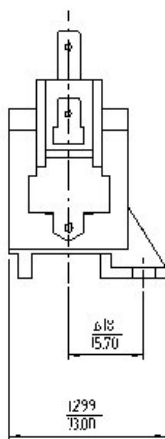
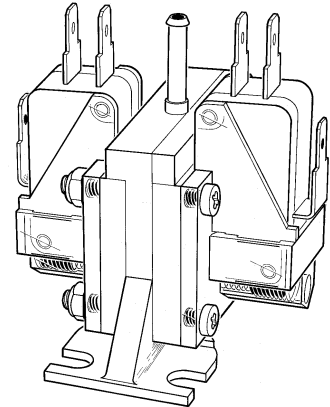
Dual Pressure Switch

Stock N° 397-2346

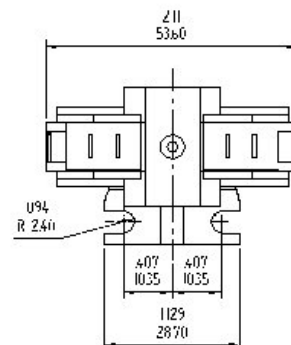
Dual setting pressure switch with common inlet port, each supplied with a pair of factory fitted springs with the range 0.07-0.27 bar (1.0-4.0 PSI). Three springs, in colour coded packs, are included for each microswitch which cover the pressure range 0.21-2.75 bar (3.0 to 40.0 PSI).

Red spring	0.21-0.69 bar	(3.0-10.0 PSI)
Dark blue spring	0.62-1.38 bar	(9.0-20.0 PSI)
Yellow spring	1.31-2.75 bar	(19.0-40.0 PSI)

Each switch is independently adjustable with a vernier screw. Any combination of springs can be fitted at the same time. The pressure switch can be mounted in any orientation to suit the application. It is ideal for a pressure control/monitoring function where the two pressures are widely separated, i.e. operating and alarm pressure.



397-2346



Technical specification

Pressure range (for each switch):	0.07-2.75 bar (using four springs)
Electrical:	SPDT (N/O or N/C)
Contact Rating	5 Amp, 250Vac
Fluid Medium	Wide range of media
Burst pressure	3.1 bar (45 PSI)
Mechanical Life	1.0x10 ⁶ cycles
Operating temp	-40 to 85°C
Contacts	Silver alloy
Diaphragm	Polyurethane
Case material	Glass filled polyester
Weight	46 grams