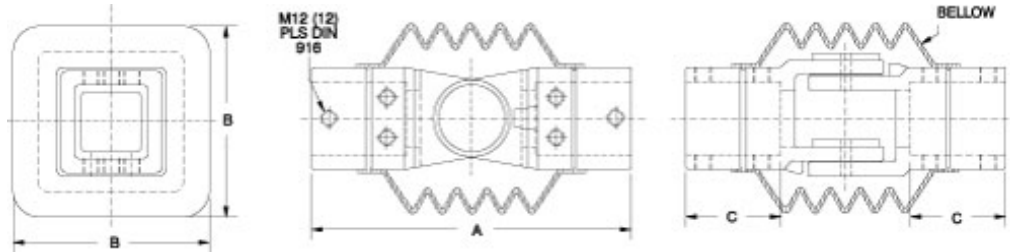


## Heavy Duty Intermediate Joint *HDSSIJ Series*



- 4G-s.g. cast iron.
- Integrated movement stop.
- One piece bellow.
- Two sleeves.
- Features a rotation range of 170°.



Part No.	System	A	B	C	Ship Wt. lbs.
<b>R147-015-000R</b>	50	236	140	70	9
<b>R147-015-200R</b>	80	320	180	97	24

*Data subject to change without notice*