

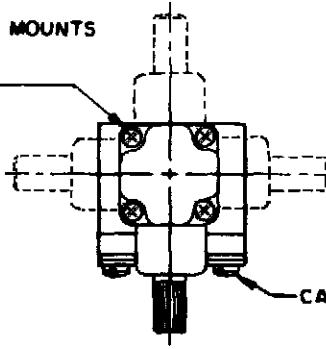
MICRO SWITCH
a Honeywell Division

FED. MFG. CODE 91929

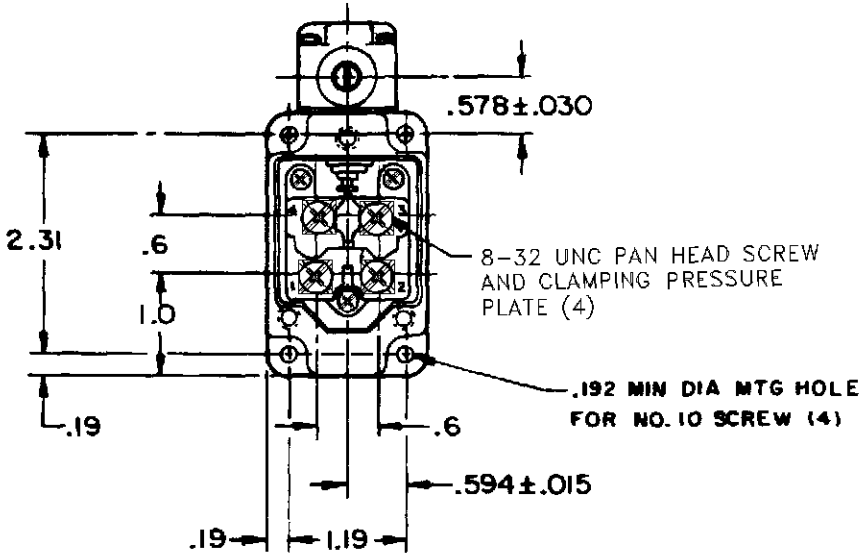
SWITCH-ENCLOSED

CATALOG LISTING
1LS1-L-SIG

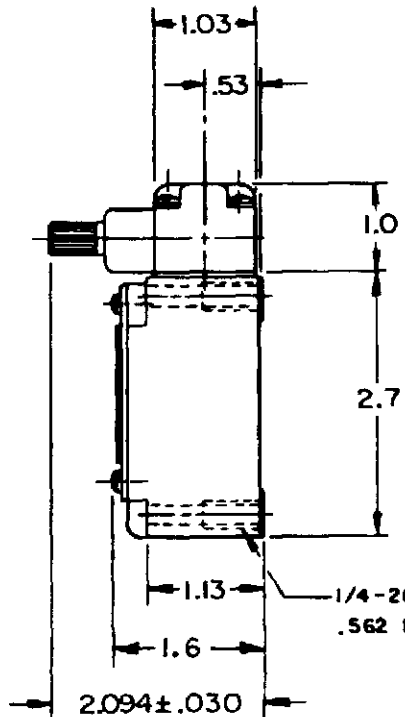
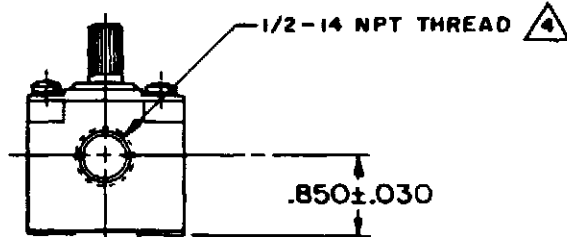
OPERATING HEAD MOUNTS
IN ANY OF FOUR
POSITIONS



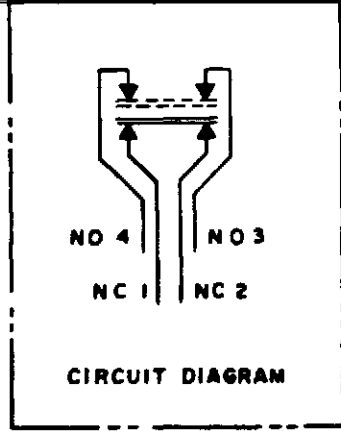
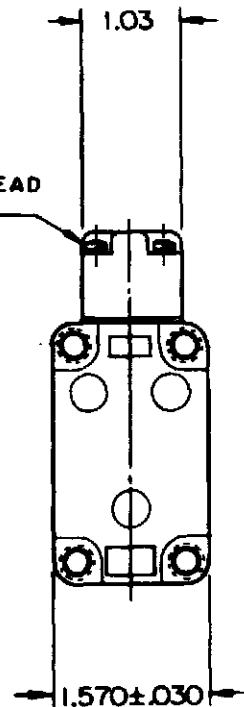
CAPTIVE COVER SCREW (3)



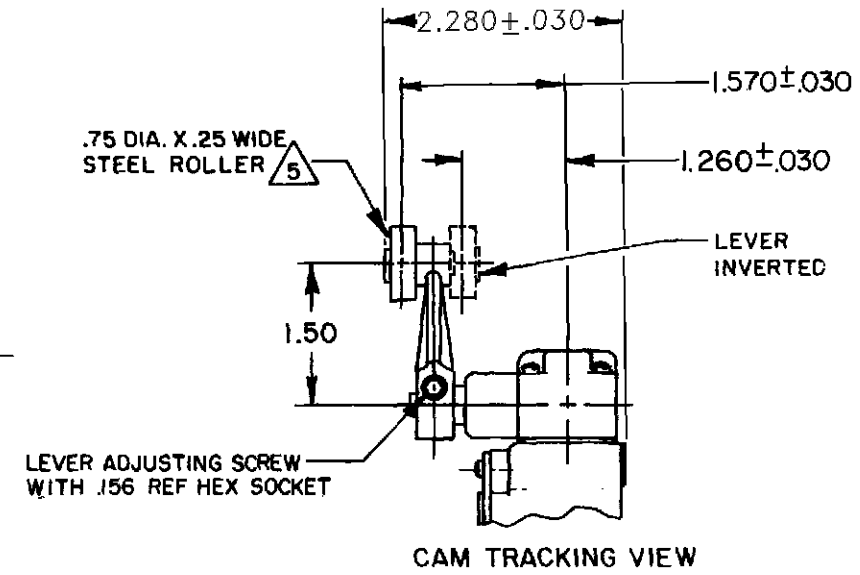
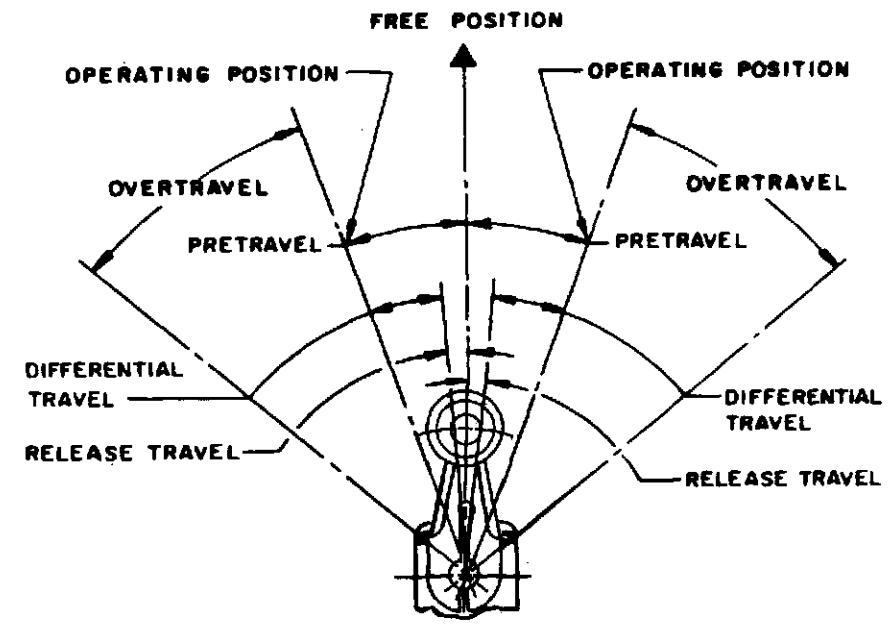
8-32 UNC PAN HEAD SCREW
AND CLAMPING PRESSURE
PLATE (4)



CAPTIVE HEAD
SCREW (4)



CIRCUIT DIAGRAM



CAM TRACKING VIEW

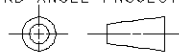
NOTES

- 1-SWITCH IS ASSEMBLED FOR ACTUATION IN BOTH DIRECTIONS BUT MAY BE ADJUSTED TO ACTUATE IN EITHER THE CLOCKWISE DIRECTION ONLY OR THE COUNTERCLOCKWISE DIRECTION ONLY
- 2-TO CONVERT SWITCH FOR ACTUATION IN EITHER THE CLOCKWISE OR COUNTERCLOCKWISE DIRECTION ONLY, REMOVE ACTUATOR HEAD AND ROTATE THE NOTCHED PLUNGER 90° TO THE RIGHT FOR CLOCKWISE ACTUATION OR 90° TO THE LEFT FOR COUNTERCLOCKWISE ACTUATION

- (4) SEAL TO BE FURNISHED BY USER
(5) ROLLER LEVER MAY BE LOCKED IN ANY POSITION THRU 360°
6- LEVER FURNISHED UNASSEMBLED IN UNIT PACKING BOX

THIS DRAWING COVERS A PROPRIETARY ITEM AND IS THE PROPERTY OF MICRO SWITCH, A DIVISION OF HONEYWELL. THIS DRAWING IS NOT TO BE COPIED OR USED WITHOUT THE APPROVAL OF MICRO SWITCH

THIRD ANGLE PROJECTION



SCALE 1/2 TO 1

CHARACTERISTICS
OPERATING TORQUE — 4 1/2 IN LB MAX
FULL OVERTRAVEL TORQUE — 6 IN LB MAX
RELEASE TORQUE — — — 3/4 IN LB MIN
PRETRAVEL — — — — — 20° MAX
DIFFERENTIAL TRAVEL — — — — — 12° MAX
OVERTRAVEL — — — — — 30° MIN
RELEASE TRAVEL — — — — — 5° MIN
SWITCH-BASIC REPLACEMENT — — — 2MNI-L

ELECTRICAL DATA
CONTACT ARRANGEMENT (SEE CIRCUIT DIAGRAM)
L126 10A 125, 250 OR 480 VAC
1/3HP 125 VAC, 3/4HP 250 VAC
0.8A 125 VDC, 0.4A 250 VDC

UNLESS OTHERWISE SPECIFIED TOLERANCES ARE
ONE PLACE (.0) ±.030
TWO PLACE (.00) ±.015
THREE PLACE (.000) ±.005
ANGLES ±
WEIGHT



Mouser Electronics

Authorized Distributor

Click to View Pricing, Inventory, Delivery & Lifecycle Information:

[Honeywell:](#)

[1LS1-L-SIG](#)