

TOSHIBA Bipolar Digital Integrated Circuit Silicon Monolithic

**TD62501PG,TD62501FG,TD62502PG,TD62502FG,TD62503PG,TD62503FG,TD62504PG
TD62504FG,TD62505PG,TD62505FG,TD62506PG,TD62506FG,TD62507PG,TD62507FG**

7ch Single Driver

TD62501PG/FG, TD62502PG/FG, TD62503PG/FG, TD62504PG/FG	Common emitter
TD62505PG/FG, TD62506PG/FG	Common collector
TD62507PG/FG	Isolated

The TD62501PG/FG Series are comprised of seven or five NPN transistor arrays.

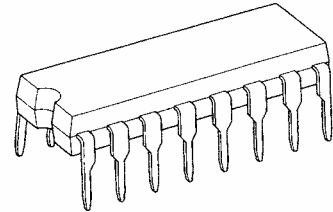
For proper operation, the substrate (SUB) must be connected to the most negative voltage.

Applications include relay, hammer, lamp and display (LED) drivers.

Features

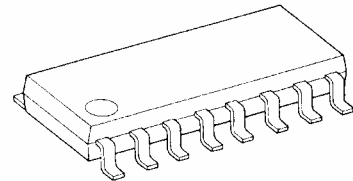
- Output current (single output) 200 mA (max)
- High sustaining voltage output 35 V (min)
- Inputs compatible with various types of logic.
- TD62501PG/FG, TD62505PG/FG and TD62507PG/FG
: Using external resistor... General Purpose
- TD62502PG/FG
: $R_{IN} = 10.5 \text{ k}\Omega + 7 \text{ V Zener Diode}$... 14 to 25 V P-MOS
- TD62503PG/FG, TD62506PG/FG
: $R_{IN} = 2.7 \text{ k}\Omega$... TTL, 5 V C-MOS
- TD62504PG/FG: $R_{IN} = 10.5 \text{ k}\Omega$... 6 to 15 V P-MOS, C-MOS
- Package Type-PG: DIP-16 pin
- Package Type-FG: SOP-16 pin

TD62501PG, TD62502PG, TD62503PG,
TD62504PG, TD62505PG, TD62506PG,
TD62507PG



DIP16-P-300-2.54A

TD62501FG, TD62502FG, TD62503FG,
TD62504FG, TD62505FG, TD62506FG,
TD62507FG



SOP16-P-225-1.27

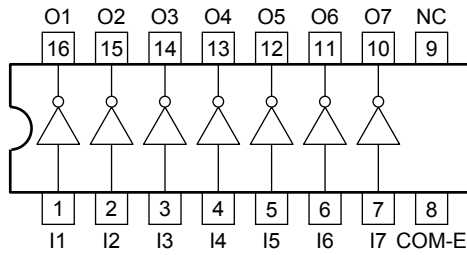
Weight

DIP16-P-300-2.54A : 1.11g (typ.)

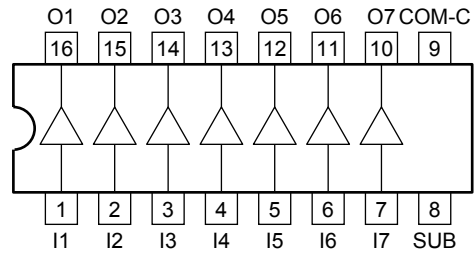
SOP16-P-225-1.27 : 0.16g (typ.)

Pin Assignment (top view)

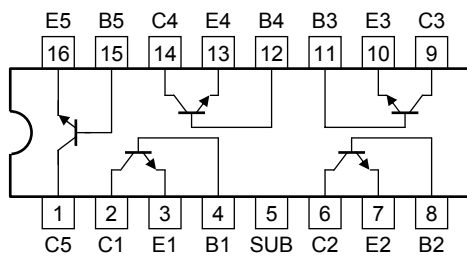
TD62501PG/FG, TD62502PG/FG
TD62503PG/FG, TD62504PG/FG



TD62505PG/FG, TD62506PG/FG



TD62507PG/FG

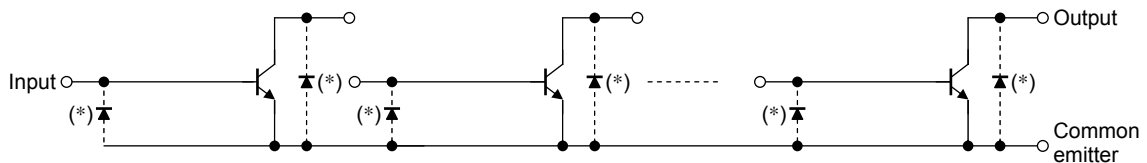


*: NC pin assignment

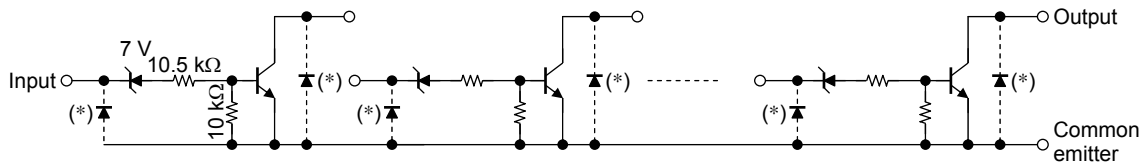
The NC pin is not assigned to an internal chip of these products; hence, no need to assign necessarily. If it is needed, Toshiba recommends that you connect the NC pin to the common emitter (GND).

Schematics (each driver)

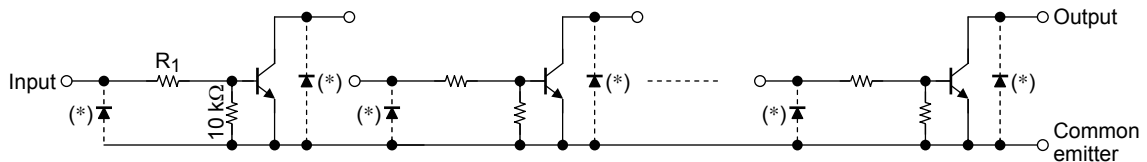
TD62501PG/FG



TD62502PG/FG



TD62503PG/FG
TD62504PG/FG



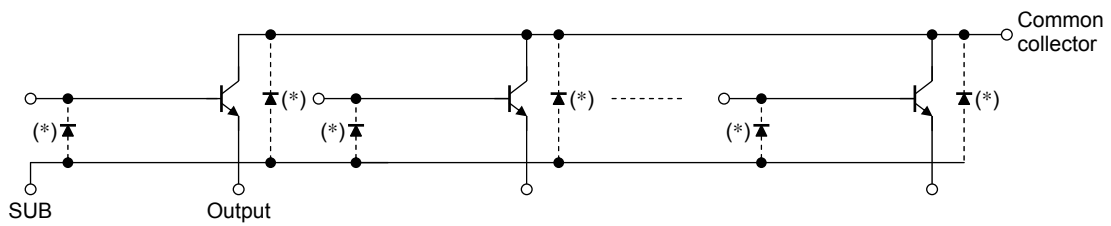
TD62503PG/FG $R_1 = 2.7 \text{ k}\Omega$,
TD62504PG/FG $R_1 = 10.5 \text{ k}\Omega$

*: Parasitic diodes

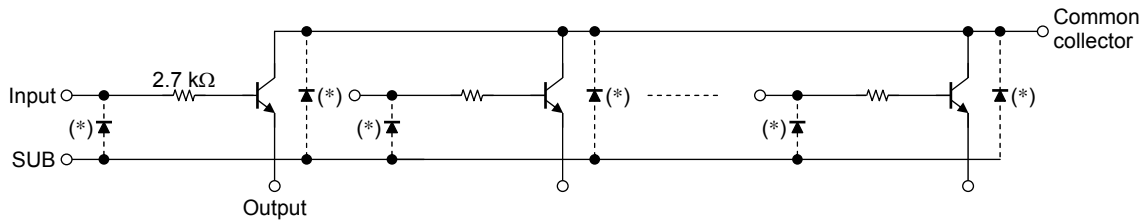
Note: The input and output parasitic diodes cannot be used as clamp diodes.

Schematics (Each driver)

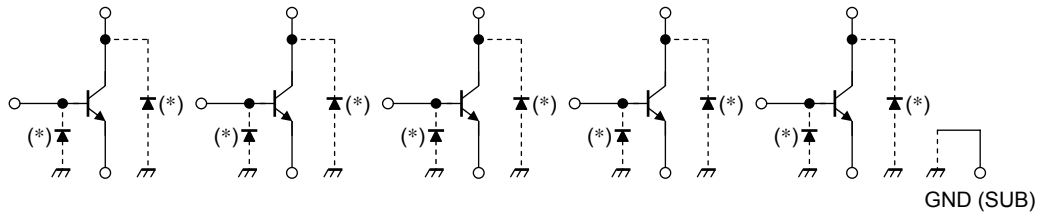
TD62505PG/FG



TD62506PG/FG



TD62507PG/FG



*: Parasitic diodes

Note: The input and output parasitic diodes cannot be used as clamp diodes.

Maximum Ratings (Ta = 25°C)

Characteristics	Symbol	Rating	Unit
Collector-emitter voltage	V_{CEO}	35	V
Collector-base voltage	V_{CBO}	50	V
Collector current	I_C	200	mA/ch
Input voltage	V_{IN} (Note 1)	-0.5 to 45	V
	V_{IN} (Note 2)	-0.5 to 30	
Input current	I_{IN} (Note 3)	25	mA
Isolation voltage	V_{SUB}	35	V
Power dissipation	PG	1.0	W
	FG	0.625 (Note 4)	
Operating temperature	T_{opr}	-40 to 85	°C
Storage temperature	T_{stg}	-55 to 150	°C

Note 1: TD62506PG/FG

Note 2: TD62502PG/FG, TD62503PG/FG, TD62504PG/FG

Note 3: TD62501PG/FG, TD62505PG/FG, TD62507PG/FG

Note 4: On Glass Epoxy PCB (30 × 30 × 1.6 mm Cu 50%)

Recommended Operating Conditions (Ta = -40 to 85°C)

Characteristics		Symbol	Condition	Min	Typ.	Max	Unit
Collector-emitter voltage		V_{CEO}	—	0	—	35	V
Collector-base voltage		V_{CBO}	—	0	—	50	V
Collector current		I_C	—	0	—	150	mA/ch
Input voltage	TD62506PG/FG	V_{IN}	—	0	—	35	V
Input voltage (Output on)	TD62502PG/FG	$V_{IN(ON)}$	$I_{IN} = 1 \text{ mA}, I_C = 10 \text{ mA}$	14.0	—	25	V
	TD62503PG/FG			2.4	—	25	
	TD62504PG/FG			7.0	—	25	
Input voltage (Output off)	TD62502PG/FG	$V_{IN(OFF)}$	$I_C \leq 10 \mu\text{A}$	0	—	7.0	V
	TD62503PG/FG			0	—	0.4	
	TD62504PG/FG			0	—	0.8	
Input current	TD62501PG/FG	I_{IN}	—	0	—	10	mA
	TD62505PG/FG						
	TD62507PG/FG						
Power dissipation	PG	P_D	—	—	—	0.360	W
	FG					(Note 1)	

Note 1: 30 × 30 × 1.6 mm Cu 50%

Electrical Characteristics (Ta = 25°C)

Characteristics		Symbol	Test Circuit	Test Condition	Min	Typ.	Max	Unit
Output leakage current		I_{CEX}	1	$V_{CE} = 25 \text{ V}, V_{IN} = 0 \text{ V}$	—	—	10	μA
Collector-emitter saturation voltage		$V_{CE(sat)}$	2	$I_{IN} = 1 \text{ mA}, I_C = 10 \text{ mA}$	—	—	0.2	V
				$I_{IN} = 3 \text{ mA}, I_C = 150 \text{ mA}$ (Note 1)	—	—	0.8	
DC Current transfer ratio	(Note 2)	h_{FE}	2	$V_{CE} = 10 \text{ V}, I_C = 10 \text{ mA}$	70	—	—	—
	(Note 3)				50	—	—	
Turn-on delay		t_{ON}	4	$V_{OUT} = 35 \text{ V}, R_L = 3.3 \text{ k}\Omega$ $C_L = 15 \text{ pF}$	—	50	—	ns
Turn-off delay		t_{OFF}	4		—	200	—	ns

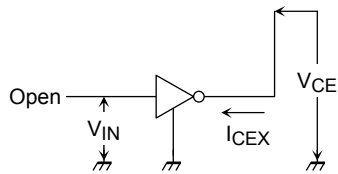
Note 1: Except TD62502PG/FG Only

Note 2: Only TD62501PG/FG, TD62505PG/FG, TD62506PG/FG, TD62507PG/FG

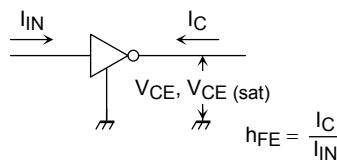
Note 3: Only TD62502PG/FG, TD62503PG/FG, TD62504PG/FG

Test Circuit

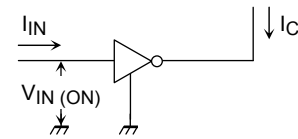
1. I_{CEX}



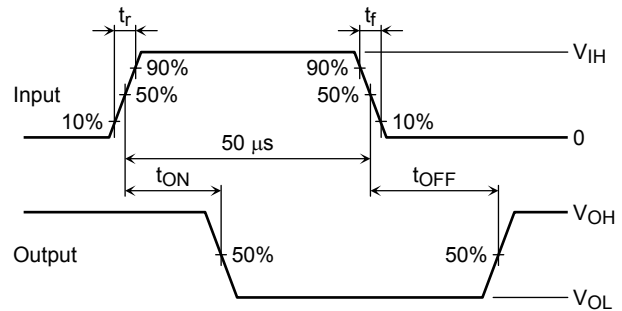
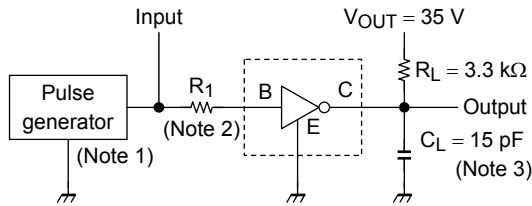
2. h_{FE}, V_{CE} (sat)



3. V_{IN} (ON)



4. t_{ON}, t_{OFF}



Note 1: Pulse width 50 μs, Duty cycle 10%
Output impedance 50 Ω, t_r ≤ 5 ns, t_f ≤ 10 ns

Note 2: See below

Input Condition

Type Number	R ₁	V _{IH}
TD62501PG/FG	2.7 kΩ	3 V
TD62502PG/FG	0 Ω	15 V
TD62503PG/FG	0 Ω	3 V
TD62504PG/FG	0 Ω	10 V
TD62505PG/FG	2.7 kΩ	3 V
TD62506PG/FG	0 Ω	3 V
TD62507PG/FG	2.7 kΩ	3 V

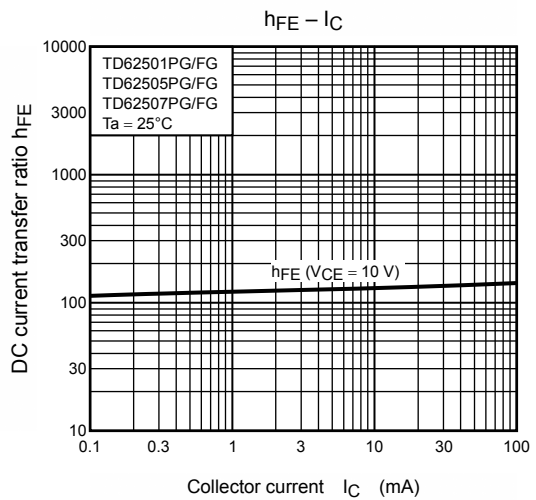
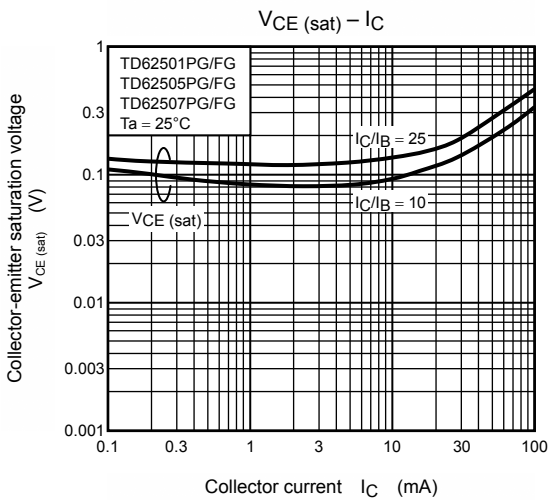
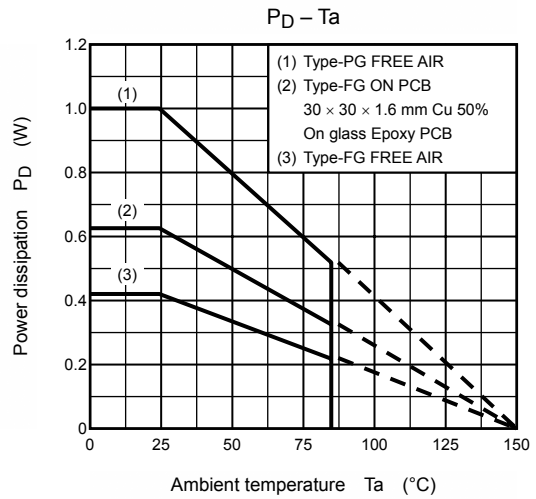
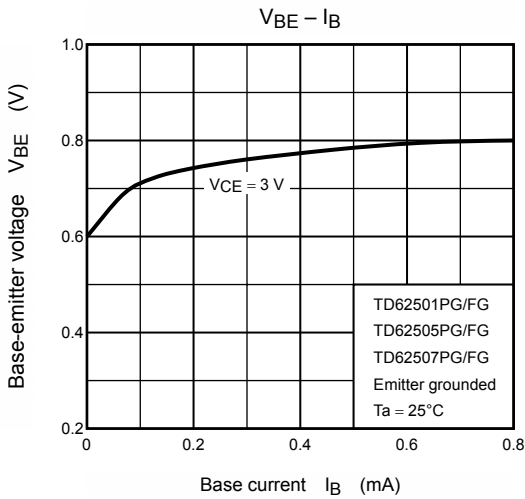
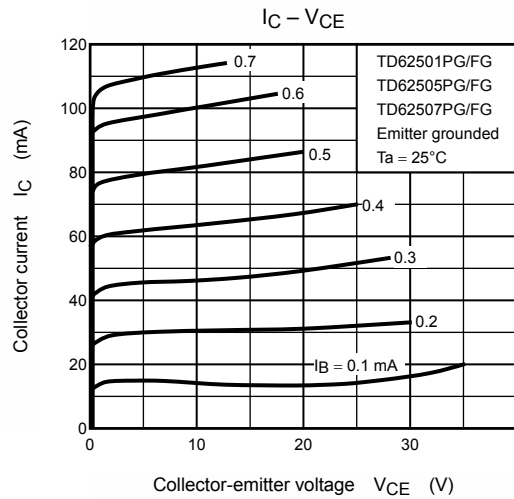
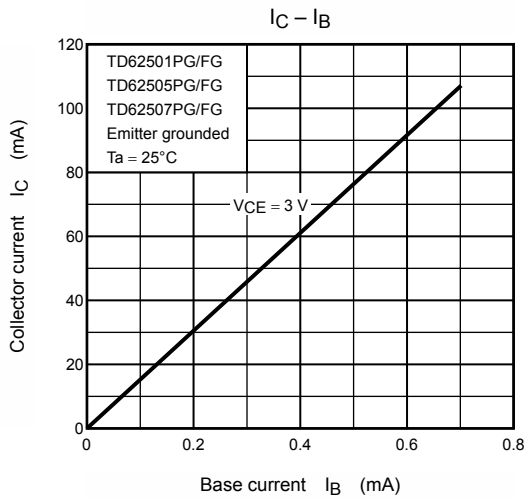
Note 3: C_L includes probe and jig capacitance

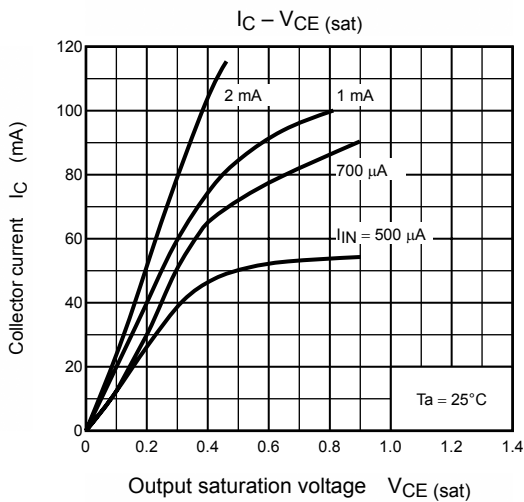
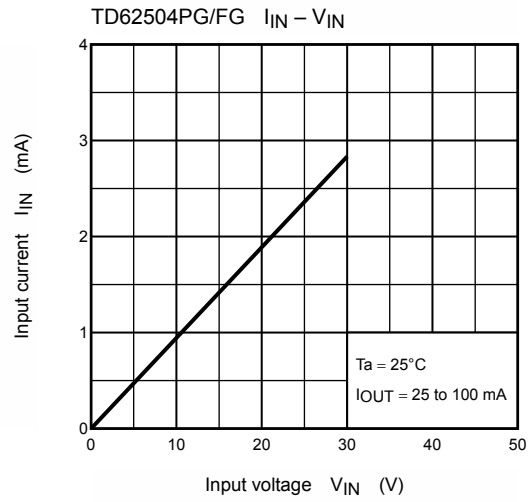
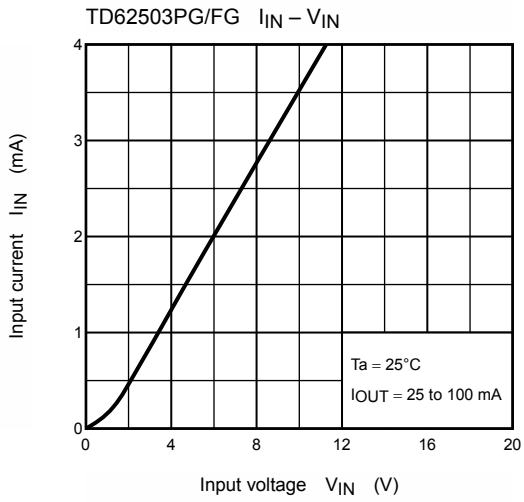
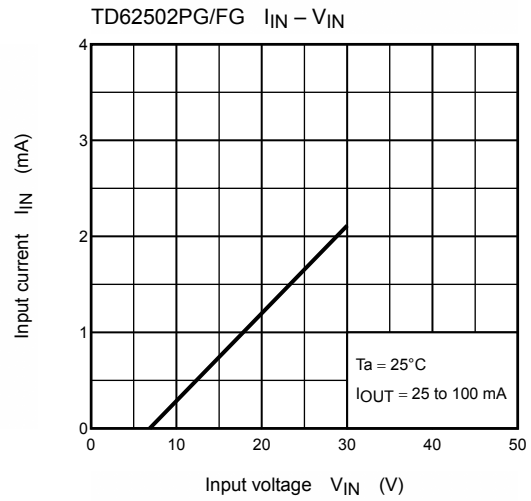
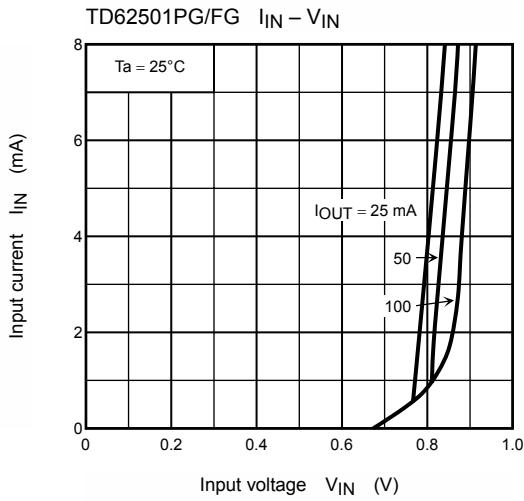
Precautions for Using

This IC does not integrate protection circuits such as overcurrent and overvoltage protectors.

Thus, if excess current or voltage is applied to the IC, the IC may be damaged. Please design the IC so that excess current or voltage will not be applied to the IC.

Utmost care is necessary in the design of the output line, V_{CC} and GND line since IC may be destroyed due to short-circuit between outputs, air contamination fault, or fault by improper grounding.

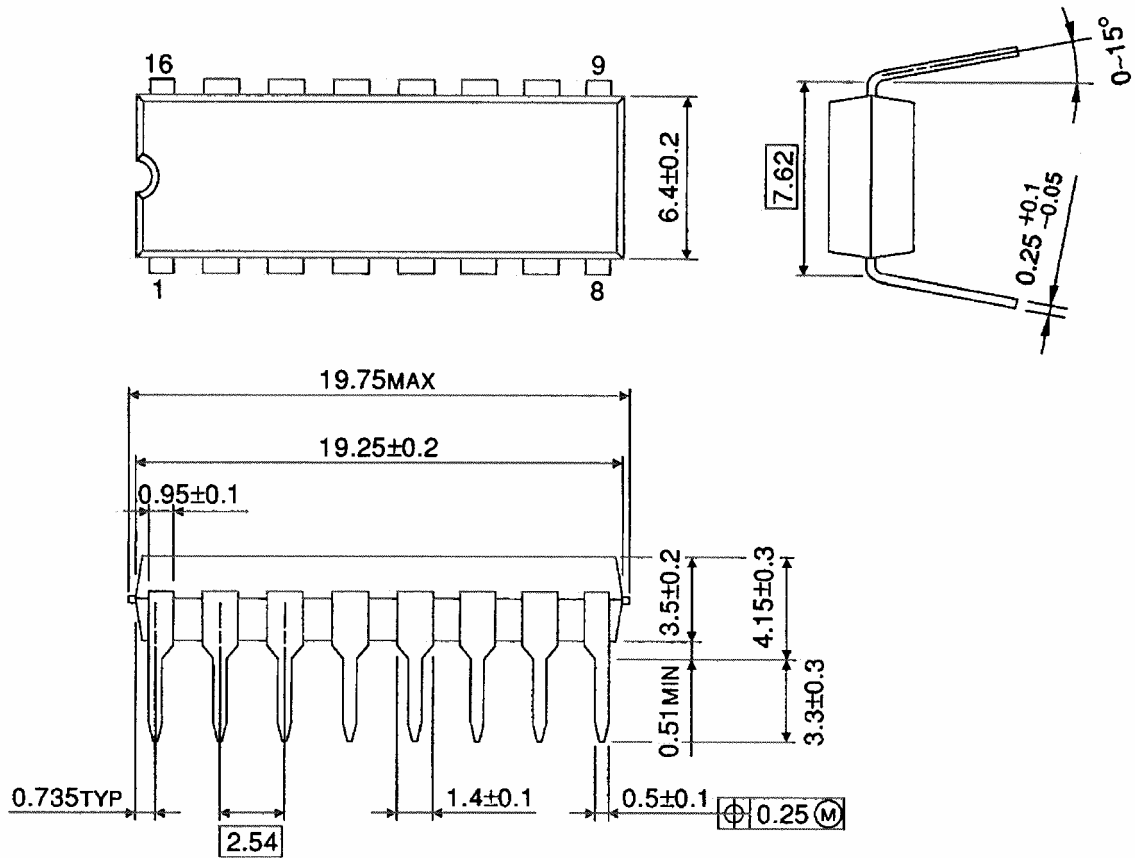




Package Dimensions

DIP16-P-300-2.54A

Unit : mm

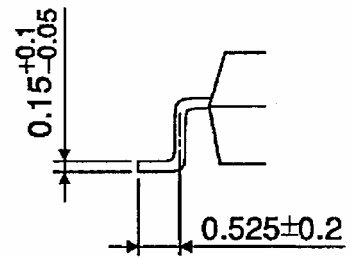
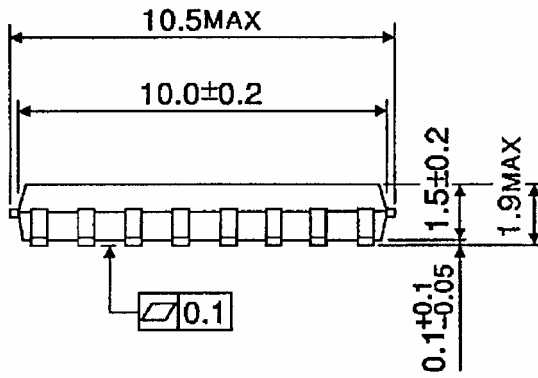
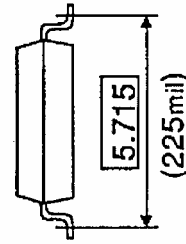
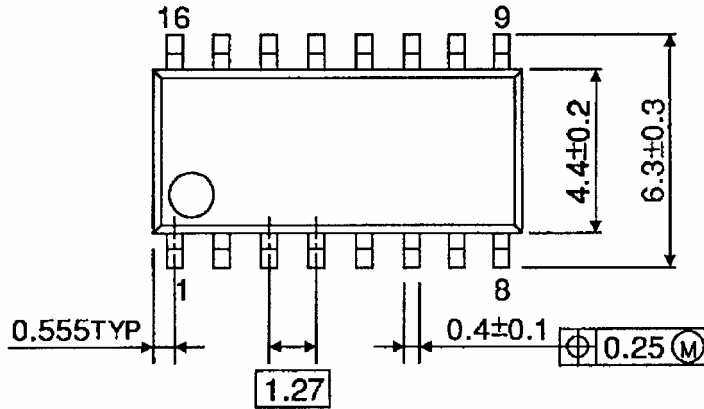


Weight: 1.11 g (typ.)

Package Dimensions

SOP16-P-225-1.27

Unit : mm



Weight: 0.16 g (typ.)

About solderability, following conditions were confirmed

- Solderability
 - (1) Use of Sn-63Pb solder Bath
 - solder bath temperature = 230°C
 - dipping time = 5 seconds
 - the number of times = once
 - use of R-type flux
 - (2) Use of Sn-3.0Ag-0.5Cu solder Bath
 - solder bath temperature = 245°C
 - dipping time = 5 seconds
 - the number of times = once
 - use of R-type flux

RESTRICTIONS ON PRODUCT USE

030619EBA

- The information contained herein is subject to change without notice.
- The information contained herein is presented only as a guide for the applications of our products. No responsibility is assumed by TOSHIBA for any infringements of patents or other rights of the third parties which may result from its use. No license is granted by implication or otherwise under any patent or patent rights of TOSHIBA or others.
- TOSHIBA is continually working to improve the quality and reliability of its products. Nevertheless, semiconductor devices in general can malfunction or fail due to their inherent electrical sensitivity and vulnerability to physical stress. It is the responsibility of the buyer, when utilizing TOSHIBA products, to comply with the standards of safety in making a safe design for the entire system, and to avoid situations in which a malfunction or failure of such TOSHIBA products could cause loss of human life, bodily injury or damage to property.
In developing your designs, please ensure that TOSHIBA products are used within specified operating ranges as set forth in the most recent TOSHIBA products specifications. Also, please keep in mind the precautions and conditions set forth in the "Handling Guide for Semiconductor Devices," or "TOSHIBA Semiconductor Reliability Handbook" etc..
- The TOSHIBA products listed in this document are intended for usage in general electronics applications (computer, personal equipment, office equipment, measuring equipment, industrial robotics, domestic appliances, etc.). These TOSHIBA products are neither intended nor warranted for usage in equipment that requires extraordinarily high quality and/or reliability or a malfunction or failure of which may cause loss of human life or bodily injury ("Unintended Usage"). Unintended Usage include atomic energy control instruments, airplane or spaceship instruments, transportation instruments, traffic signal instruments, combustion control instruments, medical instruments, all types of safety devices, etc.. Unintended Usage of TOSHIBA products listed in this document shall be made at the customer's own risk.
- The products described in this document are subject to the foreign exchange and foreign trade laws.
- TOSHIBA products should not be embedded to the downstream products which are prohibited to be produced and sold, under any law and regulations.