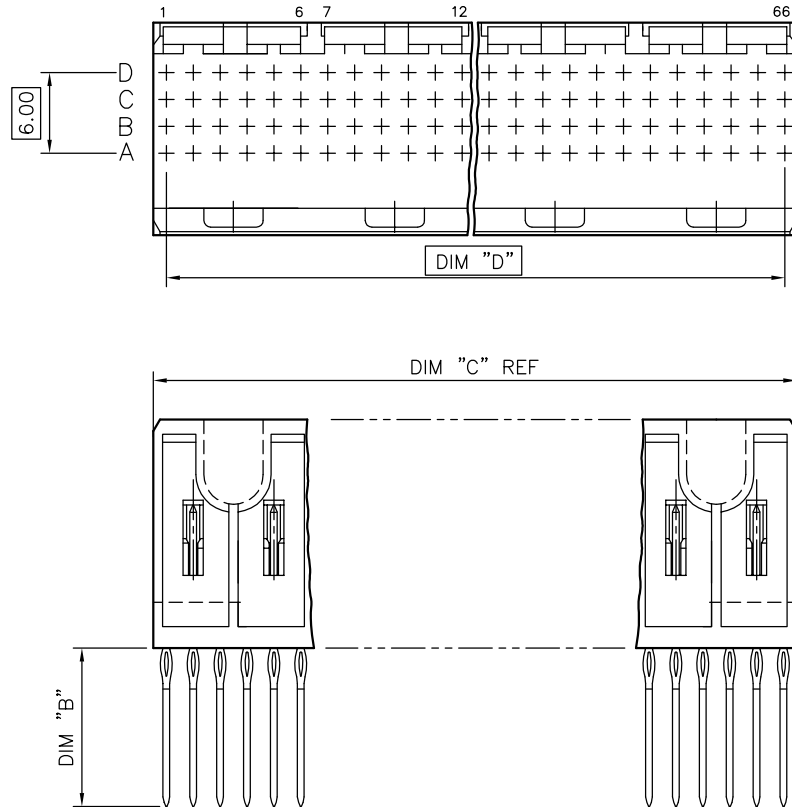


PRODUCT NO.

70468-XXXX

70468-XXXXLF



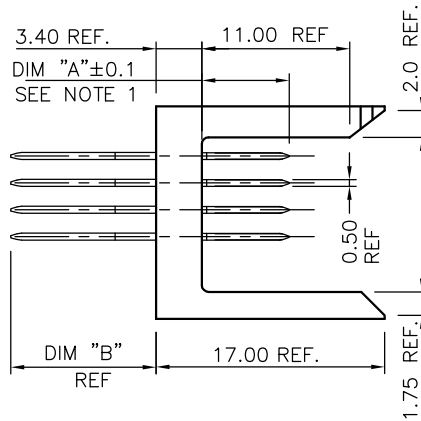
NOTES:

- ① FOR DIM "A", "B", "C", "D", "E" AND "F", SEE 70468 SHEET 4 AFTER INSERTION INTO CIRCUIT BOARD WITH APPROVED TOOLING.
- 2 BODY MATERIAL: LIQUID CRYSTAL POLYMER 30% GLASS.
FLAME RETARDANT ACC. UL 94-V0.
- 3 PIN MATERIAL: PHOSPHOR BRONZE.
- 4 PLATING ON PRESS-FIT TAIL:
70468-XXXX IS SnPb
70468-XXXXLF IS Sn (LEAD FREE)
PLATING ON CONTACT AREA CONFORMS TO PERFORMANCE LEVEL SHOWN IN TABLE BELOW.
- 5 PRODUCT MARKING: PART NUMBER & BATCH I.D.
- 6 PRODUCT SPECIFICATION: GS-12-180
APPLICATION SPECIFICATIONS: BUS-20-073 BUS-20-075
- ⑦ FOR LEAD FREE PART NUMBERS, AND AN "LF" SUFFIX
EXAMPLE: 70468-X001LF NO HMI NUMBERS FOR "LF" CODES.
- 8 THE PRODUCTS WHERE THE PART NUMBERS ENDS IN "LF" MEET THE EUROPEAN UNION DIRECTIVES AND OTHER COUNTRY REGULATIONS AS DESCRIBED IN GS-22-008.
ALL PRODUCTS WILL WITHSTAND EXPOSURE TO 260° C FOR 60 SECONDS IN A CONVECTION, INFRA-RED OR VAPOR PHASE REFLOW OVEN.

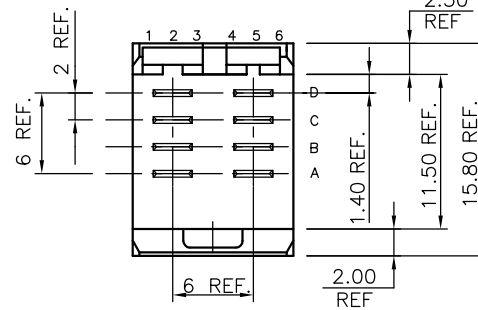
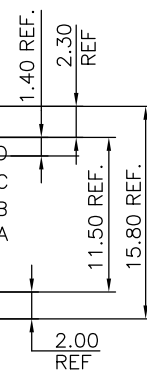
PRESS-FIT HOLES	
HOLE DIAMETER AFTER PLATING	0.65 - 0.80
DRILLED HOLE	0.81 - 0.86 (0.85 DRILL)
COPPER PLATING	0.025 MIN.
TIN PLATING	0.005 - 0.015

PLATING IN CONTACT AREA	
DASH NUMBER	PERFORMANCE LEVEL
-1YYY	TALCORDIA CO & IEC CLASS I
-2YYY	TELECOM CLASS
-3YYY	TALCORDIA CO & IEC CLASS I
-5YYY	TELCORDIA UE
-1YYLF	TALCORDIA CO & IEC CLASS I
-2YYLF	TELECOM CLASS
-5YYLF	TELCORDIA UE

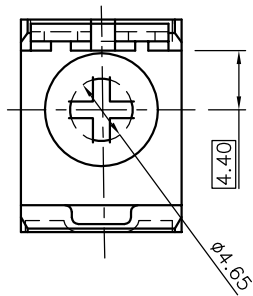
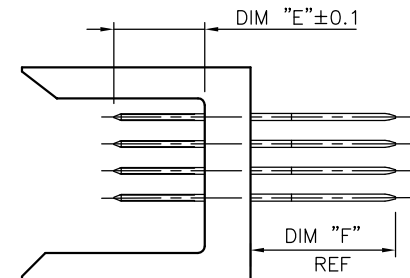
mat'l. code				surface	tolerance	projection	product family
---				ASME Y14.5	ASME Y14.5		METRAL
ltr	ecr no	dr	date	tolerances unless otherwise specified		mm	title
L	DG09-0256	TER	2009-08-19	angles	.X±.3		STR. HYBRID PRESS-FIT HDR ASSEMBLY, 132mm
-	-	-	-	cham	.XX±.13		
F	V81757	MDF	9/24/98	0'±2'	.XXX±.051	scale 1:1	dwg no sheet 1 of 4 size
G	V12679	CGD	11/14/01	dr	M.PETERS	9/23/97	
H	V04-0536	TAB	6/2/04	enfr	C.PENDLETON	9/23/97	70468 A4
J	V04-1138	LP	4/22/05	chr	C.PENDLETON	9/23/97	
K	V07-0058	LP	2007/02/07	appd	C.PENDLETON	9/23/97	type Product Customer Drawing
sheet	revision	L	L	L	L		
index	sheet	1	2	3	4		



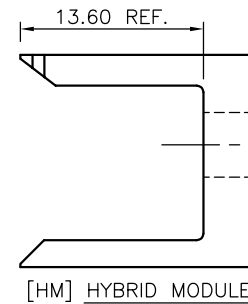
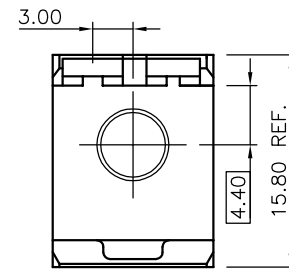
[SM] SIGNAL MODULE



[PM] POWER MODULE



[GM] GUIDE MODULE

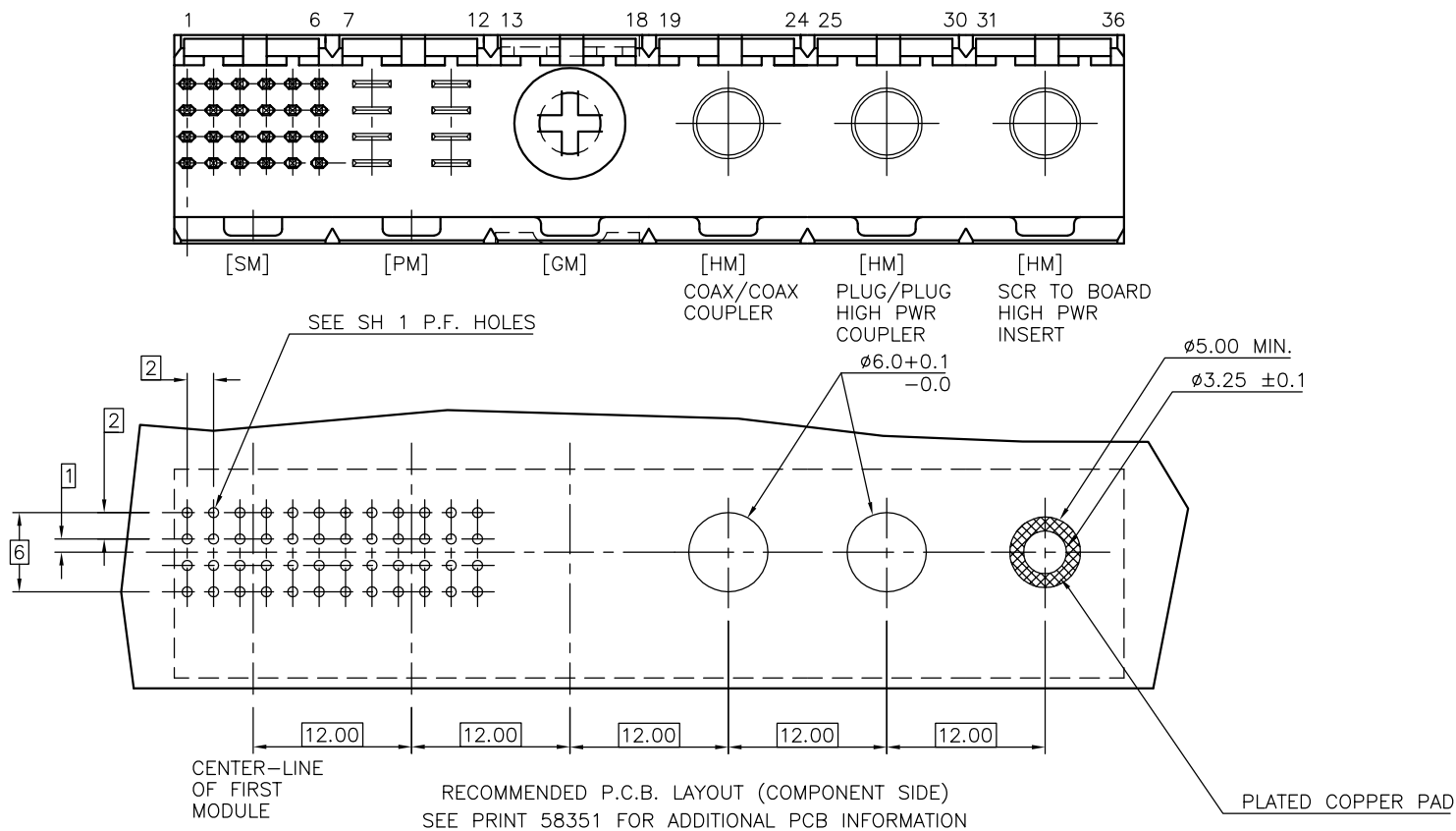





[HM] HYBRID MODULE

mat'l. code ---				surface ASME Y14.5	tolerance ASME Y14.5	projection 	product family METRAL		
ltr	ecr no	dr	date	tolerances unless otherwise specified			title		
L				angles	.X±.3	mm 	STR. HYBRID PRESS-FIT HDR ASSEMBLY, 132mm		
				0'±2'	.XX±.13				
					.XXX±.051	scale 1:1	dwg no		
				dr	M.PETERS	9/23/97	sheet 2 of		
				enfr	C.PENDLETON	9/23/97	70468		
				chr	C.PENDLETON	9/23/97	type Product Customer Drawing		
				appd	C.PENDLETON	9/23/97			
sheet index	revision sheet								



ILLUSTRATION OF ALL MODULE TYPES



mat'l. code ---				surface ASME Y14.5		tolerance ASME Y14.5		projection 		product family METRAL						
ltr	ecn no	dr	date	tolerances unless otherwise specified						title						
L				angles		linear		mm 		STR. HYBRID PRESS-FIT HDR ASSEMBLY, 132mm						
						.X±.3										
						.XX±.13										
				0°±2'		.XXX±.051		scale 1:1								
				dr	M.PETERS		9/23/97				dwg no		sheet 3 of		size	
				enfr	C.PENDLETON		9/23/97				70468		A4			
				chr	C.PENDLETON		9/23/97									
				appd	C.PENDLETON		9/23/97									
sheet index		revision sheet														

AB