

MICRO SWITCH

FREEPORT ILLINOIS, U.S.A.
A DIVISION OF HONEYWELL
FED. MFG. CODE 91929

SWITCH - BASIC

CATALOG LISTING

6HM1-3

6HM1-3

M

DRAWING
NUMBER

8

ISSUE

8

REVISIONS

A	CO	51776
	GRT	29 JUL 82
B	CO	71228
	DAW	1 NOV 91
C	CO	80788
	SAD	21 APR 95

REPLACES

RELEASE NO. PR-157

CHECK

CHECK

10 AUG 82

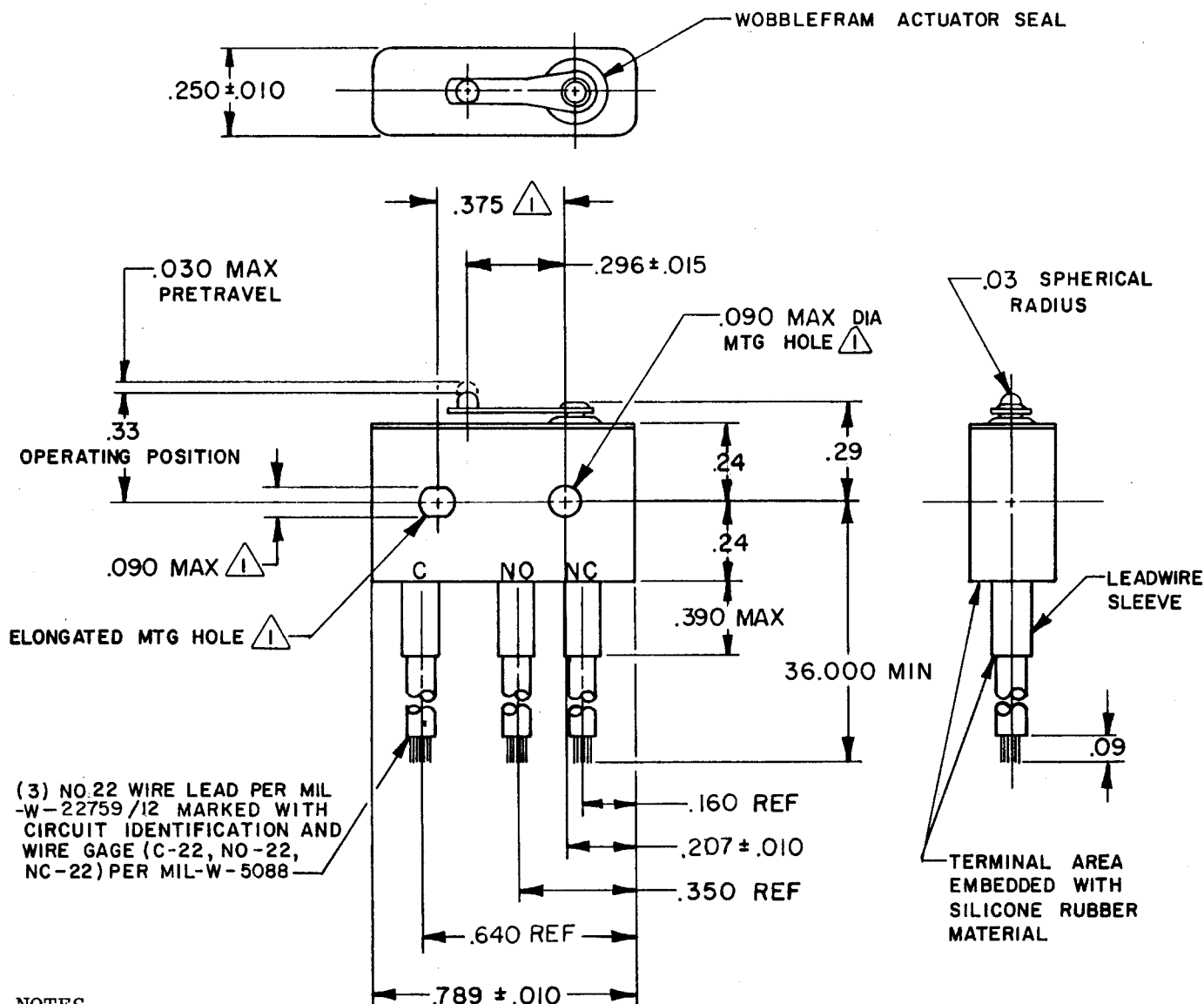
C E B

CHECK

29 JUL 82

FO-52848-A

DRAWN

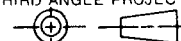


NOTES

- 1 MOUNTING HOLES WILL ACCEPT PINS OR SCREWS OF $.087$ MAX DIA ON $.375 \pm .002$ CENTERS
- 2 - FOR USE IN TEMPERATURE RANGE -85°F TO $+500^{\circ}\text{F}$ (DOWN TO -300°F IF WIRE LEADS ARE NOT FLEXED)
- 3 - HERMETICALLY SEALED (METAL TO METAL, GLASS TO METAL)
- 4 - ALL EXPOSED PARTS ARE OF CORROSION RESISTANT MATERIALS
- 5 WEIGHT OF SWITCH ONLY IS 0.014 LB MAX. WEIGHT OF CONDUCTOR GROUP ONLY IS 0.013 LB MAX PER FOOT
- 6 - DO NOT APPLY MORE THAN $1 \frac{1}{2}$ INCH LBS OF TORQUE WHEN TIGHTENING MOUNTING SCREWS

THIS DRAWING COVERS A PROPRIETARY ITEM AND IS THE PROPERTY OF MICRO SWITCH. A DIVISION OF HONEYWELL. THIS DRAWING IS NOT TO BE COPIED OR USED WITHOUT THE APPROVAL OF MICRO SWITCH.

THIRD ANGLE PROJECTION



CHARACTERISTICS

OPERATING FORCE ——— 7 OZ MAX

RELEASE FORCE ——— 1 OZ MIN

DIFFERENTIAL TRAVEL ——— $.006$ MAX

OVERTRAVEL ——— $.003$ MIN

ELECTRICAL DATA

CONTACT ARRANGEMENT
S P D T

LINE VOLTAGE	INDUCTIVE LOAD	RESISTIVE LOAD
28 VDC	2 AMP	4 AMP
115 VAC (400 CYCLE)	2 1/2 AMP	2 1/2 AMP

SCALE 2 : 1

DO NOT SCALE PRINT

TOLERANCES
APPLY TO DESIGN UNITS. CONVERSIONS ARE ONLY FOR REFERENCE. UNLESS NOTED, TOLERANCES ARE \pm

DIM.	TOL.	DIM.	TOL.
mm	mm/in	in	mm/in
NO PLACES	X	1/.04	
ONE PLACE	X,X	0.4/.016	X,X
TWO PLACES	X,X,X	0.15/.006	X,X,X
THREE PLACES	X,X,X,X		
ANGLES			

DESIGN UNITS ☐ SI METRIC

☒ US CUSTOMARY

WEIGHT Δ

Mouser Electronics

Authorized Distributor

Click to View Pricing, Inventory, Delivery & Lifecycle Information:

[Honeywell:](#)

[6HM1-3](#)