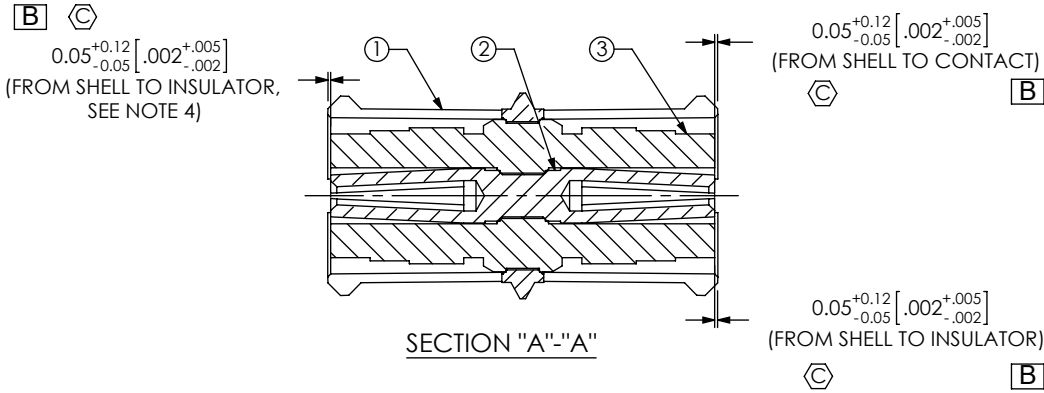


DO NOT  
SCALE FROM  
THIS PRINT

DESIGNED & DIMENSIONED  
IN MILLIMETERS[INCHES]



SMP-J-B-XX-ST-XXXX

GENDER  
-J: JACK

TYPE  
-B: BULLET

LENGTH  
-0645: 6.45MM  
\*-0700: 7.00MM  
\*-1000: 10.00MM  
-1450: 14.50MM

ORIENTATION  
-ST: STRAIGHT

PLATING SPECIFICATION  
(VALUES GIVEN ARE IN MICRO-INCHES)  
-HG: HEAVY GOLD / GOLD  
30 Au / 50 Ni MIN ON PIN  
10 Au / 50 Ni MIN ON OUTER CONTACT  
-GF: GOLD / FLASH GOLD  
10 Au / 50 Ni MIN ON PIN  
3 Au / 50 Ni MIN ON OUTER CONTACT  
(SEE TABLE 1)

\* = NOT TOOLED

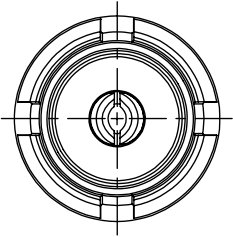
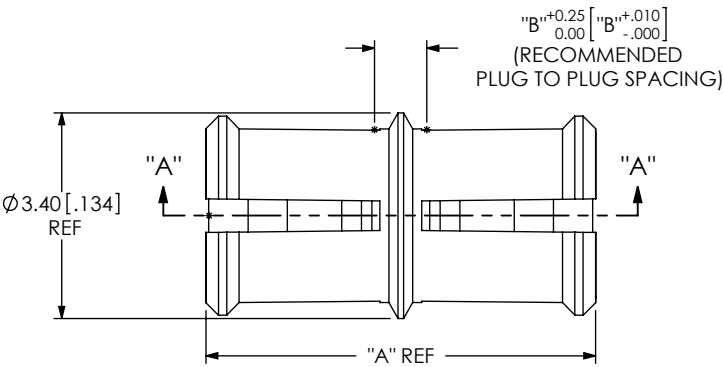


TABLE 2				
LENGTH	"A"	"B"	SMP-P-B-ST-XXX-INS	QTY
-0645	6.45 [.254]	0.86 [.034]	SMP-J-B-ST-0645-INS	1
*-0700	7.00 [.276]	1.41 [.056]	SMP-J-B-ST-0700-INS	1
*-1000	10.00 [.394]	4.41 [.174]	SMP-J-B-ST-1000-INS	1
-1450	14.50 [.571]	8.91 [.351]	SMP-J-B-ST-INS	2

\* = NOT TOOLED

NOTES:


1.  REPRESENTS A CRITICAL DIMENSION.
2. MINIMUM PUSHOUT FORCE FOR CENTER CONTACT: 6.67 N [1.5 LB].  
INSULATOR: 6.67 N [1.5 LB].
3. PRODUCT TO BE PACKAGED PER PACKING STANDARD CO-HD-WI-3040-M.  
TRAY: TY-SMA001-1  
COVER: TY-SMA001-2  
-0645: 500 PARTS PER TRAY(5 PARTS PER POCKET),  
-0700, -1000 & -1450: 300 PARTS PER TRAY(3 PARTS PER POCKET)
4. APPLICABLE ON -1450 LENGTH ONLY.

TABLE 1			
ITEM	COMPONENT	-HG	-GF
1	SHELL	SMP-J-B-G-ST-XXXX-SHL	SMP-J-B-F-ST-XXXX-SHL
2	SOCKET	SMP-J-B-H-ST-XXXX-SKT	SMP-J-B-G-ST-XXXX-SKT
3	INSULATOR	SMP-J-B-ST-XXXX-INS (SEE TABLE 2)	

UNLESS OTHERWISE SPECIFIED,  
DIMENSIONS ARE IN MILLIMETERS.  
TOLERANCES ARE:  
DECIMALS ANGLES  
X.X: ±0.3 [.01] 5°  
X.XX: ±0.13 [.005]  
X.XXX: ±0.051 [.0020]

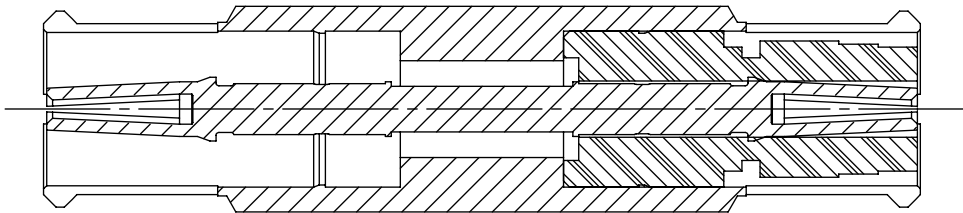
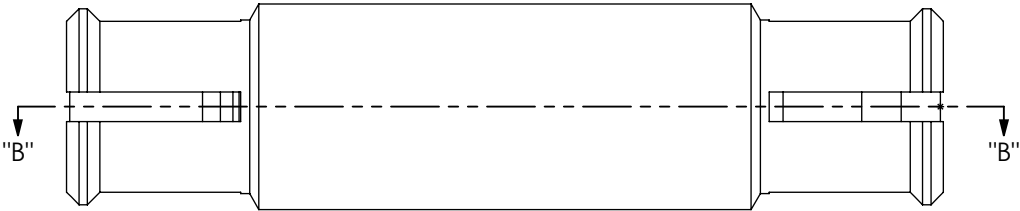
PROPRIETARY NOTE  
THIS DOCUMENT CONTAINS INFORMATION  
CONFIDENTIAL AND PROPRIETARY TO  
SAMTEC, INC. AND SHALL NOT BE REPRODUCED  
OR TRANSFERRED TO OTHER DOCUMENTS OR  
DISCLOSED TO OTHERS OR USED FOR ANY  
PURPOSE OTHER THAN THAT WHICH IT WAS  
OBTAINED WITHOUT THE EXPRESSED WRITTEN  
CONSENT OF SAMTEC, INC.

**samtec**  
520 PARK EAST BLVD, NEW ALBANY, IN 47150  
PHONE: 812-944-6733 FAX: 812-948-5047  
e-Mail: info@SAMTEC.com code 55322

MATERIAL: DO NOT SCALE DRAWING SHEET SCALE: 8:1  
PIN, SHELL: BeCu  
INSULATOR: PTFE

DESCRIPTION: SMP BULLET - 50 OHM  
DWG. NO. SMP-J-B-XX-ST-XXXX  
BY: T MEEK 12/3/2010 SHEET 1 OF 2

IN-PROCESS 1  
INSERT PIN / INSULATOR (1)  
(-1450 OPTION ONLY)



SECTION "B"-"B"

PROPRIETARY NOTE  
THIS DOCUMENT CONTAINS INFORMATION  
CONFIDENTIAL AND PROPRIETARY TO  
SAMTEC, INC. AND SHALL NOT BE REPRODUCED  
OR TRANSFERRED TO OTHER DOCUMENTS OR  
DISCLOSED TO OTHERS OR USED FOR ANY  
PURPOSE OTHER THAN THAT WHICH IT WAS  
OBTAINED WITHOUT THE EXPRESSED WRITTEN  
CONSENT OF SAMTEC, INC.

DO NOT SCALE DRAWING

SHEET SCALE: 8:1

**samtec**

520 PARK EAST BLVD, NEW ALBANY, IN 47150  
PHONE: 812-944-6733 FAX: 812-948-5047  
e-Mail info@SAMTEC.com code 55322

DESCRIPTION:  
SMP BULLET - 50 OHM

DWG. NO.  
SMP-J-B-XX-ST-XXXX

BY: T MEEK 12/3/2010 SHEET 2 OF 2